

Lot	Type	Grading	Description	Est \$AUD
<b>COMMONWEALTH OF AUSTRALIA - Postal Stationery</b>				
270	PS		Small carton with a retired dealer's stock of Envelopes & Wrappers including many better issues, generally very fine unused or used. Opportunity for a collector or re-seller. <b>(100s)</b>	250T
271	PS		Bundle with very fine examples of 'THREE/HALFPENCE' on Star 2d scarlet Envelope & 'FIVE/PENCE' on Oval 4½d Registration Envelope, ten scenic Letter Cards in variable condition including a very fine Sideface 1d uprated to Sweden, etc, also a few Victorian items and some common Victorian postmarks.	250T

**Lot 272**

272	PS	A	<b>Envelopes:</b> 1916 "Star" 1d red Die 2 showing <i>Cracked Die</i> variety (white spur above 'E' of 'PENNY'), commercially used at 'DENIAL BAY/STH AUSTRALIA'. <i>Ex John Sinfield.</i> [Sometimes erroneously called "Die 1a"]	200
-----	----	---	--	-----

**Lot 273**

273	PS	A	<b>Envelopes:</b> another example, commercially used at 'STREAKY BAY/STH AUSTRALIA'. <i>Ex John Sinfield.</i>	200
-----	----	---	---	-----

**Lot 274**

274	PS	A	<b>Envelopes:</b> 1938 KGV1 2d red on cream stock E23 commercial airmail to England with scarce franking of KGV1 3d <i>Die Ia</i> tied by 'MARREE/STH AUST' cds. <i>Ex John Sinfield.</i>	80
-----	----	---	---	----

**Ex Lot 275**

275	PS	A/B	<b>Envelopes - Official:</b> Scarce trio comprising 1d Roo <i>Die II</i> with 'OS'-of-Dots & KGV 1½d red-brown with Solid 'OS' (very fine) both for <i>Victorian Education Department</i> , and "Star" with 'POSTAGE' 2d scarlet window envelope for <i>Commonwealth Sub-Treasury</i> at Sydney, a few minor blemishes. <b>(3)</b>	300
-----	----	-----	--	-----

**Ex Lot 276**

276	PSΔ	A/B	<b>Envelopes - PTPO:</b> Scarce group comprising "Star" <i>Die II</i> showing <i>Cracked Die</i> variety (white spur above 'E' of 'PENNY') plus two other envelopes with cutouts one being of this scarce variety!; "Star" 1d <i>Die V</i> (23 Dots at Left & Right: used only for PTPO issues) <i>Menuz #18B</i> window envelope; "Star" 1½d black-brown <i>Die II</i> (Triangles; Flat Base of '2' in '½' at Left) <i>Menuz #19B</i> ; and rare cutouts from Kangaroo 2½d, KGV Sideface 1d red <i>Die II</i> , and KGV1 1d green+1d green; generally fine. <i>Ex John Sinfield.</i> <b>(8 items)</b>	400
-----	-----	-----	--	-----

## COMMONWEALTH OF AUSTRALIA - Postal Stationery (continued)

Lot Type Grading Description

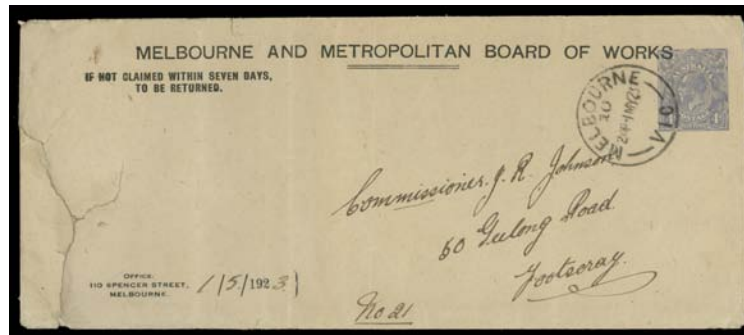
Est \$AUD



Lot 277

277 PS A- **Envelopes - PTPO:** 1915 Sideface 4d orange *Menuz* #12 oversize (230x185mm) linen-lined envelope with printed 'Wool Sample only.' at upper-left & address of *Kreglinger & Fernau* in London, minor natural paper-blemishes & wrinkles, unused, Cat \$US3000. Rare. About 6 complete examples - all unused - are recorded. [*Johyn Sinfield* didn't have a complete envelope. *Steve Schumann's* complete envelope sold for \$3680 at our auction of 22/4/2006]

2,500T



Lot 278

278 PS C **Envelopes - PTPO:** 1923 KGV Sideface 4d dull blue *Menuz* #11 for *Melbourne & Metropolitan Board of Works*, Melbourne cds of 1MY23, roughly opened at left & vertical folds still a presentable example of this rarity, Cat \$US3000. Ex *Charlie Fawcett*, *Julie Resch* and *John Sinfield*. [Only 1440 printed]

1,500



Lot 279

279 PS C **Envelopes - PTPO:** 1924 1d green + No 'POSTAGE' 1/2d orange *Menuz* #42 window envelope for *Berlei Ltd* with slogan 'AUSTRALIAN ENTERPRISE COUNTS ON AUSTRALIAN SUPPORT' at the base, opened a bit roughly & with 55mm closed tear at top that does not intrude on the embossings, Cat \$US1500. Ex *John Sinfield*. [The No 'POSTAGE' 1/2d die was used in error. Apart from this emission, for this user, the 1/2d orange without 'POSTAGE' is unrecorded. It cannot exist as a solo embossing]

1,250



Lot 280

280 PS B **Envelopes - PTPO:** 1930 'TWO/PENCE' on 1 1/2d red *Menuz* #41 small envelope (137x81mm) with printed address for unknown user, used at Ballarat in 1932, ironed-out vertical fold, Cat \$US1250. Ex *John Sinfield*.

500

## COMMONWEALTH OF AUSTRALIA - Postal Stationery (continued)

Lot Type Grading Description

Est \$AUD



Lot 281

281 PS B **FOOD PARCEL LABELS:** 1946 5/10d blue with 'FOOD POST PARCEL/FROM/ANTHONY HORDERN & SONS LTD/...' printed in red, a little soiled & a couple of ironed-out creases, partial strike of Sydney parcel roller cancel & rubber datestamp '6JAN1947' in violet (probably applied by the recipient). One of the great rarities of Australian Postal Stationery.

Gary Watson writes: "Over the past 27 years, I have handled, or at least seen, virtually every rare item of Australian Postal Stationery. However, there are two notable issues of which I have only viewed illustrations: the WWII 5d Letter Sheet for use by Japanese Prisoners of War; and the *Anthony Hordern* Food Parcel Label. To have that list reduced to one item is very exciting!"

It is believed that this example - that was formerly illustrated in old editions of "*The Australasian Stamp Catalogue*" - is the **only** recorded example, not the only used example, but **the only one in any condition**. This is all the more remarkable when one looks at the significant numbers of similar *Myer* Food Parcel Labels that have survived. Even the mint *Myer* 3/7d label is not as rare as the *Anthony Hordern* 5/10d: at least three examples of the mint 3/7d are known. This remarkable rarity was for many years in the wonderful collection formed by the late *Keith Freebairn* of Adelaide.

Despite World War II ending in late-1945, severe food shortages and rationing continued in Great Britain for several years. The Food Parcel Scheme was instituted in Australia in 1946, largely in response to Britain's Labour Government introducing rationing of bread, which was seen by most as the worst possible austerity measure. In bringing down this unpopular regulation, Prime Minister *Clement Attlee* said "People might feel impelled to send food parcels to Britain".

Recent research into government papers that have been de-restricted has shown that rationing bread was not so much a matter of managing demand for a basic commodity, as a political manoeuvre to pressure the United States and Canada into not restricting wheat exports to Britain. Many people hold the mistaken belief that the United States' *Marshall Plan* for post-war reconstruction was limited in its scope to Continental Europe. In fact, Britain was a major beneficiary under the *Marshall Plan* and the rationing of bread was seen as providing major psychological leverage to extract the best possible terms and outcomes for Britain. One wonders how many Australians would have contributed to the "Food Parcels for Britain" scheme, had they been aware of the true situation.

5,000

282 PS **Postal Cards:** Attractive group including Fullface 1d P1 used to United States with South Australian ½d added, Coronation 1d (KGV oblong), Sideface 1d with One Line of Instruction, 1d with Two Lines of Instruction (both Dies), 1922 No Footnote 1½d green etc, generally very fine & mostly unused. (19)

400T



Lot 283

283 C A- **Postal Cards:** 1911 Map of Australia PPC with 'CORONATION SOUVENIR' and cameo portraits of KGV & Queen Mary on the address side over 'WITH THE COMPLIMENTS/OF THE BRISBANE CITY COUNCIL/...', a couple of minor blemishes on the reverse, unused. [These portraits & frames were adapted for the post office Postal Cards P4]

200T

## COMMONWEALTH OF AUSTRALIA - Postal Stationery (continued)

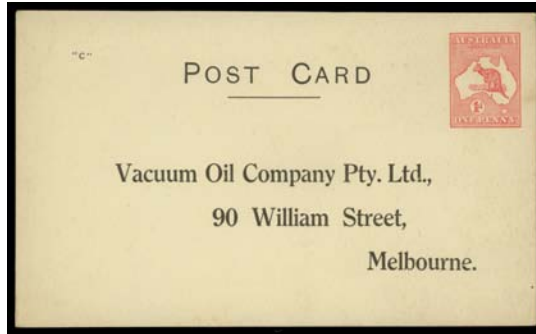
Lot Type Grading Description

Est \$AUD



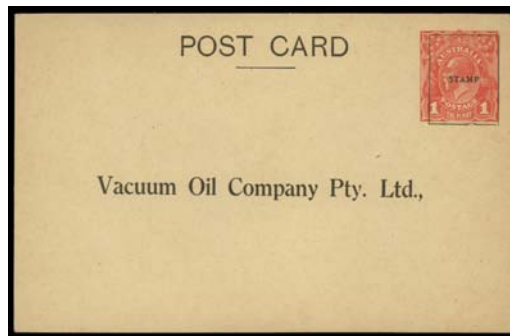
Lot 284

284	PS	B	<b>Postal Cards - Official:</b> 1913 Kangaroo 1d Die II as P2a with 'O.H.M.S.' overprint above the stamp, corner crease, unused. [Overprints of this type for done in Adelaide. Most usage of such overprinted items is by the <i>South Australian Railways</i> ]	200
-----	----	---	---	-----



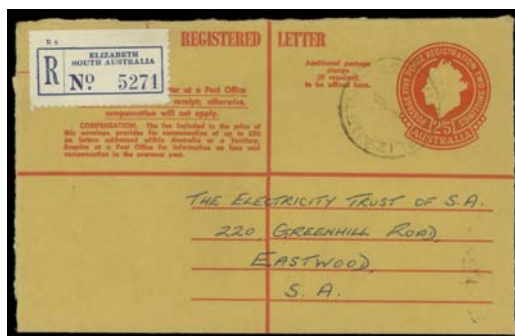
Lot 285

285	PS	A-	<b>Postal Cards - PTPO:</b> 1913 Kangaroo 1d Die II with plain 'POST CARD' heading, printed address of <i>Vacuum Oil Co</i> & acknowledgement of receipt on the reverse, minor corner bend, unused.	250T
-----	----	----	---	------



Lot 286

286	PS	A	<b>Postal Cards - PTPO:</b> 1915 KGV Sideface 1d Die I with plain 'POST CARD' heading & the stamp printed over 'STAMP'-within-box, printed address of <i>Vacuum Oil Co</i> & order form on the reverse, unused.	300T
-----	----	---	---	------



Lot 287

287	PS	A-	<b>Registration Envelopes:</b> 1965 (Nov) 2/5d in <i>Helecon Ink R39a</i> , used at Elizabeth (SA), opened-out.	140T
-----	----	----	---	------

## COMMONWEALTH OF AUSTRALIA - Postal Stationery (continued)

Lot Type Grading Description

Est \$AUD



Lot 288

288	PS	A-	<b>Wartime Issues:</b> c.1940 KGVI Envelope 1d green with Single-Line 'AUSTRALIAN DEFENCE FORCES' across Map of Australia at Upper-Left #X1.4, to Perth with 'AIF FIELD PO/6JA43/No8' cds used at Nazeirat (Palestine: LRD), opened at Perth by Censor & resealed with pieces of 'FOUND OPEN' labels. <i>Ex John Sinfield.</i> [A rare & significant item, being the only example of this item recorded used outside of Western Australia, presumably by a serviceman of WA origin]	400
-----	----	----	---	-----