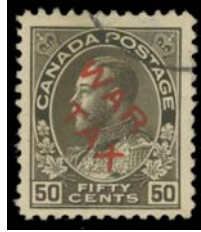


| Lot | Type | Grading | Description | Est \$AUD |
|---------------|------|---------|--|-----------|
| CANADA | | | | |
| 782 | *O | | Single-volume collection mostly used with 1859 1c (2, one unused), Large Queens to 15c (2) Small Queens to 10c, 1893 20c & 50c, KEVII to 20c, useful 1930s Pictorials including 50c "Bluenose", later issues to 1980s with fair degree of completion mint or used, handy back-of-book issues. Mixed condition. (100s) | 200 |
| 783 | O | | 1897-1970s modest mint & used collection including 1908 Quebec Centenary 10c and 15c * & used (2, one with fault), some better 1920-30s commemoratives & coils, 1942 War Effort set mint, basic range thereafter. Heavy duplication in places, condition very mixed. (1000s) | 150 |

**Lot 784**

| | | | | |
|-----|---|-------|--|----|
| 784 | V | A- B1 | 1915 'WAR/TAX' Overprint in Red on 50c sepia SG 227, faint crease at top, fake cancel, Cat £160. | 0T |
|-----|---|-------|--|----|

**Lot 785**

| | | | | |
|-----|---|------|--|------|
| 785 | G | A/A- | 1928-29 Pictorials \$1 olive Parliament Buildings SG 285 block of 9 - largely separated & rejoined - a few minor wrinkles, large 'R'-in-oval cancels, Cat £585+-. A remarkable multiple. | 250T |
|-----|---|------|--|------|

**Lot 786**

| | | | | |
|-----|---|---|---|--------|
| 786 | F | A | NEW BRUNSWICK: 1850s piece with rare franking of 3d dull red <i>bisect</i> SG 2a (Cat £2750 on cover) & 6d yellow SG 3 (Cat £800), both stamps with close to large margins, tied by fine 8'-in-oval-of-bars cancels in blue. <i>Alberto Diana Certificate</i> (1967) & the piece lightly signed by him on the face. Most attractive. | 1,000T |
|-----|---|---|---|--------|