

Lot Type Grading Description

Est \$AUD

NEW ZEALAND - Postal History



Lot 948

948 C A+ 1867 tiny envelope to "Ngatimoti/Motueka" with very fine Perf 12½ 1d carmine-vermilion pair, fine '15' cancels & superb 'NELSON' cds alongside. *Ex John Woolfe.* [Route was Nelson-Takaka by sea, then by horse to Ngatimoti, which had no post office until -/2/1870]

500T



Lot 949

949 C A- 1871 cover to Christchurch (b/s) with scarce franking of 1d orange-vermilion (noted as having a re-entry) & 3d mauve tied by fine 'D/NZ/HOKITIKA/SP14/71 - C/21' duplex, flap fault & a few very faint tonespots hardly detract from the very fine appearance. *Ex John Woolfe.* [On 1/8/1870 the inter-provincial rate was reduced from 3d to 2d per half-ounce]

600T



Lot 950

950 C A- 1900 commercial cover to Auckland (b/s), Pictorials 1d pair with clear manuscript cancellation "Tutamoe/7 6 00", 'KAIHU' & 'DARGAVILLE' transit b/s. Rated 10 by *Wooders.* *Ex John Woolfe.* [A previous owner "corrected" identification of the town to "Tutaenui". However, that PO was in Wanganui District, whereas Tutamoe, Kaihu & Dargaville are all in the Whangarei District]

300T



Lot 951

951 PS (A-) 1909 'ON LAND AND INCOME TAX BUSINESS ONLY' envelope to Sydney (b/s) with fine strike of the rare 'TAXES/3D/POSTAGE PAID' meter & d/circle 'WELLINGTON/PAID/ 4 ' h/s, 'GOVERNMENT BUILDINGS/WELLINGTON' cds & blue registration label, repairs to a couple of peripheral tears. A rare & remarkable usage, being both registered, and to an overseas address.

1,500T

NEW ZEALAND - Postal History (continued)

Lot Type Grading Description

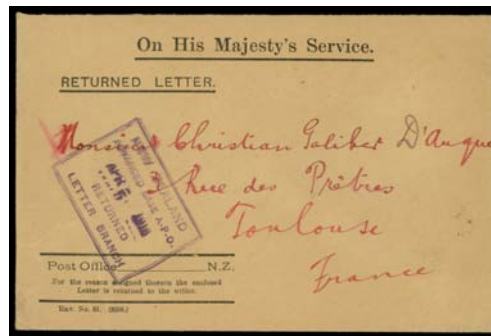
Est \$AUD



Lot 952

952 C A 1910 stampless cover to Ireland with 'NELSON/1D/ 3 /POSTAGE PAID' meter impression x3, 'NELSON/ 19 /PAID/NZ' h/s in red x2 & Nelson cds x2.

400T



Lot 953

953 C A 1916 New Zealand OHMS 'RETURNED LETTER' Envelope from Egypt to France with double-boxed 'NEW ZEALAND/ADVANCED BASE APO/APR 5 1916/RETURNED/LETTER BRANCH' d/s in violet, 'ALEXANDRIA' transit b/s. A remarkable external usage.

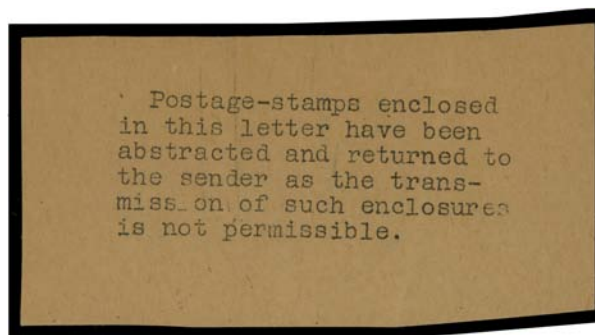
400T



Lot 954

954 C A- 1941 (Feb) commercial airmail cover Auckland to NSW with Tasman 2d x3 only & very fine 'TO PAY/("8d")/DOUBLE DEFICIENT POSTAGE' h/s, Australian Postage Due 2d strip of 4 tied by 'BATHURST/NSW' cds, a couple of very minor blemishes.

100T



Lot 955

955 C A 1942 cover to United States with NZ Censor tape & Passed #69 h/s & tiny roneo'd enclosure "Postage stamps enclosed/in this letter have been/abstracted and returned to/the sender as the trans-/mission of such enclosures/is not permissible". Not seen by us before.

150T