

Lot Type Grading Description

Est \$AUD

SOUTH AUSTRALIA - Postmarks



Ex Lot 434

- | | | | | |
|-----|---|--|--|------|
| 434 | S | | "DIAMOND NUMERALS": Attractive little collection of mostly fine to very fine strikes on a good range of stamps including some Imperfs & Rouletted issues, many better numbers including '16' (rated RR), '67' (RR), '97' (RR), '99' (RR), '169' (RRR), '193' (RRR) & '222' (RRR). (88) | 500T |
|-----|---|--|--|------|



Lot 435

- | | | | | |
|-----|---|------|--|-----|
| 435 | S | A A2 | Adelaide: 'NEWS 12 PAID/DE11/02/ADELAIDE' two slightly overlapping strikes on 2d violet strip of 3. Very scarce. | 75T |
|-----|---|------|--|-----|



Lot 436

- | | | | | |
|-----|---|-------|---|------|
| 436 | C | B A1- | Adelaide: fancy-scroll 'G. P. O./MAY 19. 1911/ADELAIDE.' d/s largely very fine strike in violet on local OHMS cover (a little reduced at left). | 200T |
|-----|---|-------|---|------|



Lot 437

- | | | | | |
|-----|---|----|--|------|
| 437 | C | B1 | Birkenhead: squared-circle 'BIRKENHEAD/OC13/35/S.A.' (7 years later than <i>Overton's</i> LRD) largely very fine strike, black/blue registration label. PO -/12/1886; closed 30/11/1965. [Unless stated otherwise, all registered covers in this section are philatelic covers with printed address of <i>J Howard Johnson</i>] | 125T |
|-----|---|----|--|------|

SOUTH AUSTRALIA - Postmarks (continued)

Lot Type Grading Description

Est \$AUD



Lot 438

- | | | | | |
|-----|---|-------|--|------|
| 438 | C | A- A1 | Brooker (2): 'BROOKER/6AP62/S.A.' two largely very fine strikes on 6d Bandicoot & 1/6d Flower on Business Reply envelope (opened-out), typed 'UNGARRA' on provisional registration label, 'PORT LINCOLN' transit b/s. A rare & highly visual cover. T.O. only 3/1/1928; closed 13/6/1974. [Telegraph Office datestamps are rarely found on commercial mail. TOs had no registration facilities so that service, if required, was provided at the first post office] | 400T |
|-----|---|-------|--|------|



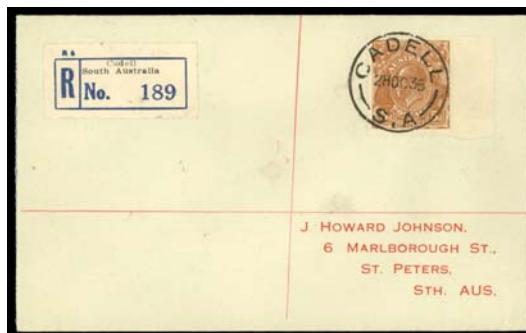
Lot 439

- | | | | | |
|-----|---|-------|--|------|
| 439 | C | A A1- | Bull's Creek: 'BULLS CREEK/24OC35/STH AUSTRALIA' largely very fine strike, black/blue registration label. RO 1910; PO 1/7/1927; renamed Bull Creek 5/12/1940. | 150T |
|-----|---|-------|--|------|



Lot 440

- | | | | | |
|-----|---|------|---|------|
| 440 | S | B A2 | Burrungule (1): 24mm squared-circle 'BURRUNGULL/NO11/92/SA' (spelling error) very fine & remarkably early strike on 2d orange (rounded corner). Unrecorded. PO 1/10/1892; closed 1/11/1915. [Overton records only a 26mm type, 1899-1901 only] | 300T |
|-----|---|------|---|------|



Lot 441

- | | | | | |
|-----|---|-------|--|------|
| 441 | C | A A1+ | Cadell: 'CADELL/28OC35/S.A.' superb strike, black/blue registration label. RO 16/5/1921; PO 1/7/1927. | 100T |
|-----|---|-------|--|------|

SOUTH AUSTRALIA - Postmarks (continued)

Lot Type Grading Description

Est \$AUD



Lot 442

442 C A A1- **Carrieton:** squared-circle 'CARRIETON/OC25/35/S.A.' very fine but light strike (A1+ b/s), black/blue registration label. RO 16/5/1921; PO 1/7/1927.

75T



Lot 443

443 C A- A1 **Charra (2):** 'CHARRA/3NO35/S.A.' largely very fine strike, mss "Charra" on registration label. PO 1/9/1891; RO 1910; PO 1/7/1927; closed 19/9/1966.

150T



Lot 444

444 C A A1- **Cockatoo Valley:** 'COCKATOO VALLEY/6NO35/STH AUST.' almost very fine strike, very fine strike, mss "Cockatoo/Valley" on registration label.. RO 1/8/1910; PO 1/7/1927.

150T



Lot 445

445 C A A1+ **Cook:** 'COOK/7NO35/STH AUST' two superb strikes, black/blue registration label. RO 1917; PO 1/7/1927. [On the *Trans-Australian Railway*]

150T

SOUTH AUSTRALIA - Postmarks (continued)

Lot Type Grading Description

Est \$AUD



Lot 446

446 C A A1- **Cungena:** 'CUNGENA/17NO35/S.A.' largely very fine strike, mss "Cungena" on registration label. RO 1/1/1921; PO 1/7/1927; closed 29/5/1992.

100T



Lot 447

447 S A A2 **Eastern Well:** 'EASTERN WE[LL]/15JE12/STH A[USTR]' very fine strike on 1d pink. RO only 7/1/1911; closed 29/6/1916. Rare.

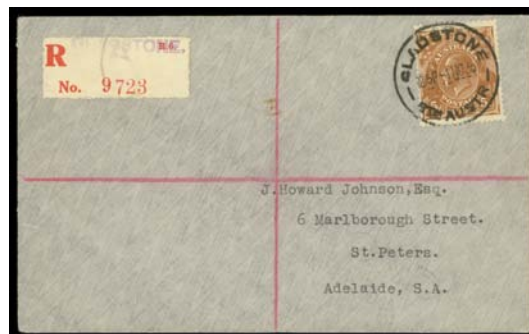
150T



Lot 448

448 C A A1 **Forster:** 'FORSTER/13DE35/S.A.' very fine strike, black/blue registration label, superb 'SWAN REACH' transit b/s. PO 2/4/1898; RO 1910; PO 1/7/1927; TO 1/4/1971; closed 4/10/1971.

125T



Lot 449

449 C A A1 **Gladstone:** 'GLADSTONE/1215P 1NO35/STH AUSTR' very fine strike, straight-line h/s in violet on scarce unbordered red registration label.

100T

SOUTH AUSTRALIA - Postmarks (continued)

Lot	Type	Grading	Description	Est \$AUD
-----	------	---------	-------------	-----------



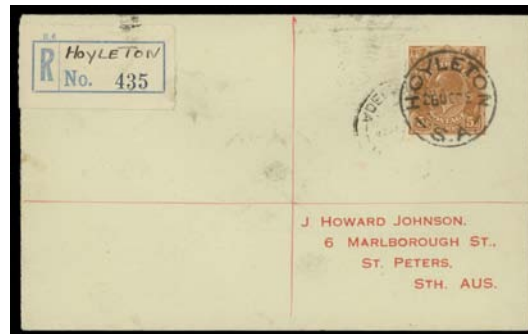
Lot 450

450	C	A A1	Glanville Blocks: 'GLANVILLE BLOCKS/17DE35/STH AUST' very fine strike, blue registration label. PO 1/9/1896; RO 1910; PO 1/7/1927; renamed Semaphore Park 3/2/1946.	150T
-----	---	------	--	------



Lot 451

451	Δ	A A1-	Glenloth Battery (2): 'GLENLOTH BATTERY/10JE38/S.A.' very fine strike on KGVI 2d. PO 1/8/1935; closed 29/2/1956. [<i>Goldmining</i>]	150T
-----	---	-------	---	------



Lot 452

452	C	A A1	Hoyleton: 'HOYLETON/25OC35/S.A.' very fine strike, mss "Hoyleton" on unusually pale blue registration label. PO -/11/1870; RO 1910; PO 1/7/1927; closed 7/2/1990.	125T
-----	---	------	--	------



Lot 453

453	C	A A1-	Johnburgh: 'JOHNBURGH/1OC35/STH AUSTR' fine strike, 'JOHNBURG' (error) on black/blue registration label. PO 1/8/1879; RO 1910; PO 1/7/1927; closed 31/12/1966.	150T
-----	---	-------	---	------

SOUTH AUSTRALIA - Postmarks (continued)

Lot Type Grading Description

Est \$AUD



Lot 454

454 C A A1- **Kapinnie:** 'KAPINNIE/14JA36/S.A.' very fine strike, blue registration label. RO 3/2/1919; PO 1/7/1927; closed 31/1/1986.

150T



Lot 455

455 S A A2 **Killalpaninna (2):** squared-circle '[KILL]ALPANINNA/JU05/08/S.A.' very fine strike on 2d violet. Rated XXXX. PO 6/8/1906; closed 31/5/1917. [Lutheran mission station with population of around 10 to 12 whites & about 300 aborigines]

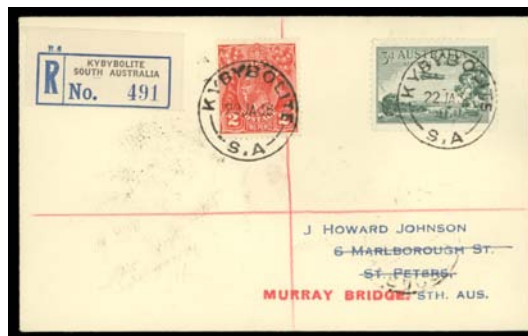
200T



Lot 456

456 C A A1+ **Kulkami:** 'KULKAMIE/25JA36/S.A.' two very fine to superb strikes, blue registration label. RO 1/1/1925; PO 1/7/1927; closed 30/6/1982.

150T



Lot 457

457 C A A1 **Kybybolite:** 'KYBYBOLITE/22JA36/S.A.' two very fine strikes, black/blue registration label. PO 1/8/1906; RO 1910; PO 1/7/1927.

125T

SOUTH AUSTRALIA - Postmarks (continued)

Lot Type Grading Description

Est \$AUD



Lot 458

458 S A A2 **Marrachowie:** squared-circle 'MARRACHOWIE/DE12/96/S.A' very fine and virtually complete strike on 2d orange. Rated XX. PO 1/10/1886; renamed Warrakimbo 1/6/1905.

100T



Lot 459

459 Δ A- A1 **Mongolata (3):** 'MONGOLATA/30AP40/S.A.' very fine strike on KGVI 2d & 3d. PO 1/4/1933; closed 31/12/1946. [Goldmining]

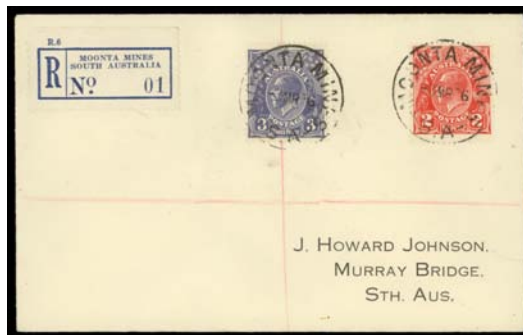
150T



Lot 460

460 C A A1 **Montacute:** 'MONTACUTE/12MR36/S.A' two very fine strikes, black/blue registration label. PO -/1/1888; RO 1910; PO 1/7/1927.

125T



Lot 461

461 C A B1 **Moonta Mines:** 'MOONTA MINES/3MR36/S.A' two largely fine strikes, blue registration label. PO 1/4/1867; RO 1910; PO 1/7/1927; closed 30/6/1976. [Copper mining]

125T

SOUTH AUSTRALIA - Postmarks (continued)

Lot Type Grading Description

Est \$AUD



Lot 462

462 C A A1 **Mount Cooper:** squared-circle 'MOUNT COOPER/MR14/36/S.A.' good & very fine strikes (& superb b/s), blue registration label. RO 2/5/1907; PO 1/7/1927; closed 31/5/1975.

150T



Lot 463

463 C A A1- **Mount McKenzie:** 'MT McKENZIE/14MR36/STH AUSTR' two largely very fine strikes, manuscript "Mt McKenzie" on blue registration label. RO 2/1/1914; PO 1/7/1927; closed 30/10/1965.

200T



Lot 464

464 C A- A1- **Native Valley:** squared-circle 'NATIVE VALLEY/AU13/40/S.A.' on cover to Adelaide, blue registration label. Closed 21/8/1954. [Very late usage of a squared-circle datestamp]

125T



Lot 465

465 C A B1 **Penong:** 'PENONG/7MY36/STH AUSTRALIA' two good to fine strikes, late usage of red registration label. PO 1/8/1891; RO 1910; PO 1/7/1927; closed 30/10/1983.

100T

SOUTH AUSTRALIA - Postmarks (continued)

Lot Type Grading Description

Est \$AUD



Lot 466

466 C A A1 **Piccadilly:** 'PICCADILLY/5MY36/S.A.' two fine to very fine strikes, blue registration label. PO 1/6/1901; RO 1910; PO 1/7/1927; closed 31/1/1994.

100T



Lot 467

467 S A A2+ **Pickering (2):** 'PICKERING/26OC26/STH AUSTRALIA' (R.O. period) superb strike on KGV 1½d red. RO 1/3/1909; PO 1/7/1927; renamed Wool Bay 25/6/1942.

100T



Lot 468

468 S A A1+ **Queenscliffe:** squared-circle 'QUEENSCLIFFE/FE23/03/S.A.' superb strike on "Long Tom" 9d. Rated XX. PO 1/9/1883; renamed Kingscote (2) -/11/1903. [On Kangaroo Island]

75T



Lot 469

469 C A A1- **Ramco:** 'RAMCO/14MY36/S.A.' two fine strikes, mss "Ramco" on blue registration label. PO 28/9/1896; RO 1910; PO 1/7/1927.

100T



Lot 470

470 C A A2 **Saltia (2):** 'SALTIA/24OC35/S.A.' largely very fine strike, red 'PORT AUGUSTA' registration label. TO only 23/8/1925; closed 12/4/1951.

200T

SOUTH AUSTRALIA - Postmarks (continued)

Lot	Type	Grading	Description	Est \$AUD
-----	------	---------	-------------	-----------



Lot 471

471	Δ	A A1	Saltia (2): 'SALTIA/17JL39/S.A.' largely very fine strike on KGVI 2d. T.O. only 23/8/1925; closed 12/4/1951	125T
-----	---	------	--	------



Lot 472

472	C	A B2-	Shea Oak Log: 'SHEA OAK LOG/13JA37/S.A.' two fair to good strikes plus two fine strikes of diamond-numeral '26', typed "SHEA OAK LOG" on red provisional registration label. PO 1/1/1855; RO 1910; PO 1/7/1927; closed 6/3/1981.	100T
-----	---	-------	---	------



Lot 473

473	C	A B1-	Tickera: 'TICKERA/28MY36/S.A.' two poor to almost fine strikes, mss "Tickera" on blue provisional registration label. PO 1/8/1879; RO 1910; PO 1/7/1927; closed 31/12/1971.	125T
-----	---	-------	--	------



Lot 474

474	C	A A1+	Tothill's Creek: 'TOTHILLS CREEK/28MY36/S.A.' two good to superb strikes, mss "Tothills Creek" on black/blue provisional registration label. PO 1859; RO 1910; PO 1/7/1927; renamed Tothill Creek 5/12/1940.	150T
-----	---	-------	---	------

SOUTH AUSTRALIA - Postmarks (continued)**Lot Type Grading Description****Est \$AUD****Lot 475**

475 C A B1 **Undalya:** 'UNDALYA/1JE36/S.A.' two good to fine strikes, mss "Undalya" on blue provisional registration label. PO 1863; RO 1910; PO 1/7/1927; closed 24/3/1972.

125T

**Lot 476**

476 C A B1 **Whitwarta:** 'WHITWARTA/12JE36/S.A.' two fine to very fine strikes, mss "Whitwarta" on blue provisional registration label. PO 1/8/1876; RO 1910; PO 1/7/1927; closed 30/10/1971.

125T