

Lot Type Grading Description

Est \$AUD

THEMATICS & SUBJECTS - Ship Mail of the Pacific

[We are pleased to offer the interesting collection formed by our long-standing friend Lloyd Perry, of Mount Gambier. Except where mentioned otherwise, all items are of a commercial or domestic nature]



Ex Lot 37

37	SΔ	Three pages of shipboard and paquebot cancellations on stamps from China, Japan, Papua, German New Guinea, New Zealand, Tonga, New Hebrides etc. Better items include complete strikes of the rare straight-line 'SS HOUTMAN', 'SS Morinda' & 'MOTAU' and part-[SS KULA]MBANGRA', a superb strike of the 'SHIP/LETTER'-in-circle used aboard "SS Papuan Chief", fair to fine 'KuK MARINE DETACHMENT/PEKING' cds (3, non-maritime) and very fine strike of the rare 'DEUTSCHE SEEPOST/JALUIT-/LINIE/ b ' cds in violet, mostly fine to very fine strikes. (39 items)	400
----	----	--	-----



Ex Lot 38

38	C	Range of mainly modern philatelic covers but with some better items including Japan 1894 front to Sydney with Coronation commems, 1897 10c Postal Card from Cambodia to Sydney, 1899 5k Postal Card from Russia to Sydney, 1900 philatelic cover Samoa to Germany with 'NZ MARINE PO/RMS MARIPOSA'; cds, Hong Kong 1909 PPC to Portugal with 'LIGNE N/PAQ FR No 8' d/s, Tonga 1928 cover to the passing ship TSS "Tofua" with 1d pair cancelled with 'NIUAFOOU'-in-bars cancel, 1931 large-part cover with US 2c tied by 'CHICHIBU-MARU/IJ SEAPOST' cds, two covers with oval Dutch ship cancels, etc, also some PPCs of ships, condition variable. (66 items)	750
----	---	---	-----



Ex Lot 39

39	C	AUSTRALIA: Useful group including 1891 late pre-UPU 1/- rate from NSW to Denmark, 1899 Victorian Postal Card to Indo-China, 1933 & 1934 covers to USA both with 'POSTED SHIP SIDE/SYDNEY' cds, philatelic cover with 3d Kookaburra tied by 'LOOSE SHIP LETTER' h/s of Melbourne, 1920s five covers to the same person in London endorsed per different ships + PPCs of four of the ships, 1958 & 1963 covers with different Thursday Island paquebot h/s or cds, etc. (21 items)	500
40	C	CHINA - FOREIGN POST OFFICES: 1900 <i>Boxer Rebellion</i> German Marine Schiffspost No 28 (2) & No 50 plus PPC with 5pf & faint regimental cachet, 1911 & 1912 <i>Norddeutscher Lloyd</i> PPCs (2) with 'China' Overprints, 1915 registered cover from 'TSINGHAIWEI' to USA per "SS Wang Chin Chai" with 'MOUKDEN' transit & US '.../SUPPOSED LIABLE TO/CUSTOMS DUTY/...' label affixed to reverse, and 1938 to USA with China 25c tied by Vancouver Paquebot slogan cancel, etc. (12)	350

THEMATICS & SUBJECTS - Ship Mail of the Pacific (continued)

Lot Type Grading Description

Est \$AUD



Lot 41

- | | | | | |
|----|---|---|---|-----|
| 41 | C | B | CHINA - FOREIGN POST OFFICES: 1902 PPC ("Chefoo Innerhafen") to Germany with Austrian 5h tied by 34mm Austrian Navy 'K.u.K KRIEGS.../SMS/KAISERIN U KONIG/MARIA THERESE' cds, 'WUERZBURG 2' arrival cds & '48'-in-circle postmans' handstamp, some faint spotting. | 300 |
|----|---|---|---|-----|



Ex Lot 42

- | | | | | |
|----|---|------|---|-----|
| 42 | C | A-/B | FIJI: 1927 <i>Oceanic Steamship Co</i> (illustrated logo on flap) to United States via Sydney where KGV 3d cancelled with cds & with double-oval 'LOOSE SHIP/LETTER' alongside; and 1932 to Auckland with KGV 1d & 2d tied by 'MARINE POST OFFICE/...RMS NIAGARA' cds. (2) | 200 |
|----|---|------|---|-----|



Lot 43

- | | | | | |
|----|---|---|--|-----|
| 43 | C | A | GERMAN SEEPOST: 1897 overpaid cover to Germany with German 50pf tied by 'DEUTSCHE SEEPOST/OST-/ASIATISCHE/HAUPTLINIE/ c ' cds used aboard SMS "Preussen". | 250 |
|----|---|---|--|-----|



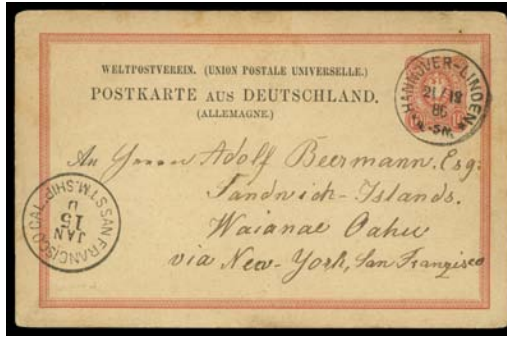
Lot 44

- | | | | | |
|----|---|---|--|-----|
| 44 | C | A | GILBERT & ELLICE ISLANDS: 1933 cover to Philippines with NZ 1d Admiral tied by 'FANNING ISLAND/NZ' cds, typed "Per Commercial Pacific Cable Co/SS Dickenson to Honolulu". | 250 |
|----|---|---|--|-----|

THEMATICS & SUBJECTS - Ship Mail of the Pacific (continued)

Lot Type Grading Description

Est \$AUD



Lot 45

45 PS B **HAWAII:** 1886 German 10pf Postal Card to "Sandwich Islands/Waianae Oahu" with superb 'SAN FRANCISCO CAL/JAN/15/D/STM.SHIP' transit cds at lower-left, minor blemishes. Very scarce inwards mail from Europe.

400



Lot 46

46 PS A- **HAWAII:** 1906 usage of USA 5c Lincoln Envelope to Samoa with typed "Str Sierra", superb 'PACKET BOAT.' h/s (*Hosking* #1679; rated C) of Honolulu where duplex cancel also applied, 'APIA/(SAMOA)' arrival b/s. [See also Lots 57 and 58]

200



Lot 47

47 C A- **HAWAII:** 1929 commercial cover to GB with Australia 1 1/2d x2 tied by 'HONOLULU HAWAII/PAQUET BOAT' (error) cds (*Hosking* #1684; rated D), twice redirected within GB.

150



Lot 48

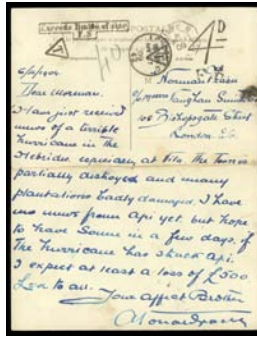
48 PS A **JAPAN:** 1898 (Dec) usage of Japanese 4s Postal Card with printed coloured scene ("Metaki Waterfall Kobe") on the reverse, to Austria with Kobe cds, a largely fine strike 'LLOYD AUSTRIACO/19/199/XXXIII' cds on the face & double-oval 'LLOYD AUSTRIACO/PIROSCAFO/[...] BACQUEHEM' cachet on the reverse both in blue. *Holcombe Certificate* (1994) states "...A very scarce ship cancellation [*sic*]"]

500

THEMATICS & SUBJECTS - Ship Mail of the Pacific (continued)

Lot Type Grading Description

Est \$AUD



Lot 49

49	C	B	NEW CALEDONIA: 1909 (Nov 6) double-size PPC ("Noumea - Premier accostage du Grand Courier") sent folded in half, with 1c & 4c only tied to the view side by Noumea cds, French-type 'T'-in-triangle h/s & octagonal 'LIGNE N[...]' No 8' d/s, British stepped-box 'Exceeds limits of size/FS' & '4D/F S' handsstamps, minor soiling. [The message states "I have just received news of a terrible hurricane in the Hebrides, especially at Vila. The town is partially destroyed and many plantations badly damaged..."]	250
----	---	---	---	-----



Ex Lot 50

50	C	A-	NEW HEBRIDES: c.1907 <i>Raché</i> PPC ("Guerriers Calédoniens") to London with New Caledonia 5c tied to face by fair 'NOUVELLES HEBRIDES/SERVICE MARITIME' cds; also 1936 large-part philatelic cover with French values & 4 above-average strikes of the scarce 'NEW HEBRIDES/INTERISLAND SERVICE' cds. (2 items)	250
----	---	----	---	-----



Lot 51

51	C	A-	NEW HEBRIDES: 1936 cover to Paris (b/s) with French Polynesia 60c tied by superb boxed 'PAQUEBOT' h/s (<i>Hosking</i> #1802; rated D) of Vila with 'NEW HEBRIDES/VILA' cds below.	300T
----	---	----	---	------



Lot 52

52	C	A	NEW HEBRIDES: 1937 cover to Paris (arrival b/s) with Fiji KGV 4d tied by 'N-HEBRIDES/7JUIL1937/PAQUEBOT' cds (<i>Hosking</i> #1804; rated D), double-circle 'NOUVELLES HEBRIDES/8JUIL37/PORT-VILA' b/s.	400
----	---	---	---	-----

THEMATICS & SUBJECTS - Ship Mail of the Pacific (continued)

Lot Type Grading Description

Est \$AUD



Ex Lot 53

- | | | | | |
|----|-----|--|---|-----|
| 53 | CPS | | NEW ZEALAND: Good lot including 1897 Letter Card with boxed 'LOOSE LETTER' h/s, eight 1930s covers with various Marine Post Office cds plus PPCs (6) of the ships on which they were used, etc. (23 items) | 300 |
|----|-----|--|---|-----|



Lot 54

- | | | | | |
|----|---|----|---|------|
| 54 | C | A- | NEW ZEALAND: 1868 (April 5) cover to Scotland "via Panama" with <i>Chalon</i> 6d brown tied by Dunedin duplex, London transit in red on the face & 'GIRVAN' arrival b/s, addressee's docketing on the face, minor flap fault. [Stated to have been carried on the 22nd voyage of "Rakaia", which departed Dunedin on 8/4/1868] | 400T |
|----|---|----|---|------|



Lot 55

- | | | | | |
|----|---|----|--|------|
| 55 | C | A- | NEW ZEALAND: 1903 USA PPC with message headed "San Francisco", to Madagascar! with US 2c tied by one of two fine strikes 'NZ MARINE PO/10DEC1903/RMS VENTURA' cds in purple, transit cds of 'SYDNEY', 'COLOMBO' & 'MAURITIUS' plus 'TAMATAVE/MADAGASCAR' arrival cds all on the address side. A remarkable & colourful origin-destination item. | 750T |
|----|---|----|--|------|

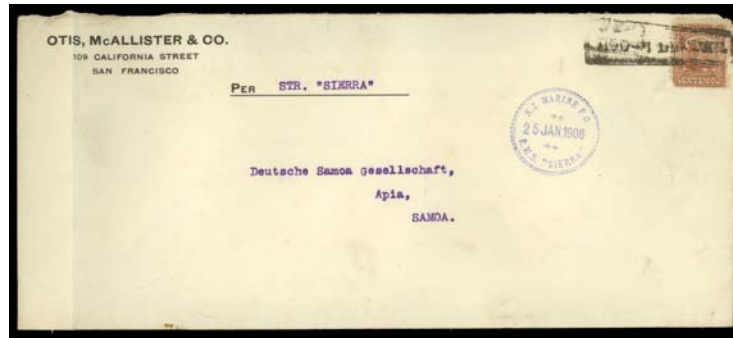


Lot 56

- | | | | | |
|----|---|---|---|------|
| 56 | C | B | NEW ZEALAND: 1904 <i>Oceanic Steamship Co</i> illustrated advertising envelope of "Our Sister Ships" featuring "Sierra", "Sonoma" & "Ventura", printed 'S.S. Sonoma' at upper-right partly obscured by Wakatipu 2½d, to "Trébizonde/Black Sea/Turquie d'Asie", repaired tear at upper-left. Gorgeous item to a truly exotic destination. | 400T |
|----|---|---|---|------|

THEMATICS & SUBJECTS - Ship Mail of the Pacific (continued)

Lot	Type	Grading	Description	Est \$AUD
-----	------	---------	-------------	-----------



Lot 57

57	CL	B	SAMOA: 1906 usage of USA 5c Lincoln Envelope front affixed to rear of a larger envelope franked with 10c Webster (faults) & both stamps tied by New Zealand type 'LOOSE LETTER' h/s, to Samoa with typed "Str Sierra" on both sides & very fine strike of 'NZ MARINE PO/25JAN1906/RMS SIERRA' cds in blue on face of the larger item, 'APIA/(SAMOA)' arrival b/s, vertical fold at left. [See also Lot 46]	400
----	----	---	---	-----



Lot 58

58	CL	B	SAMOA: a very similar item but somewhat truncated (no stamp on the larger item), typed "Str Ventura" on both sides 'NZ MARINE PO/4JAN1906/RMS VENTURA' cds in violet on face of the larger item, 'APIA/(SAMOA)' arrival b/s. By any measure, this and the previous item are most unusual pieces, especially as Postal Stationery usages.	250
----	----	---	---	-----



Ex Lot 59

59	C/CL	A/B	SOLOMON ISLANDS: 1926 & 1927 covers to the same firm in Adelaide with 1/2d & 1d or 1 1/2d tied by Sydney slogan or cds & double-oval 'LOOSE SHIP/LETTER' h/s alongside; also 1939 Commonwealth Bank cover to Sydney with small 'PAQUEBOT' h/s (as Hosking #1365, but that is recorded only from 1983!) & 1 1/2d pair tied by 'PAQUEBOT' machine cancel (#1361), vertical fold. (3)	400
----	------	-----	---	-----



Lot 60

60	CL	B	TONGA: 1894 stampless OHMS cover to Sydney with boxed 'LOOSE LETTER' h/s (Hosking #1544) & 'A'-in-bars both applied in transit at Auckland (b/s), minor toning.	200
----	----	---	--	-----