

Lot Type Grading Description

Est \$AUD

NEW SOUTH WALES - Postal History



Ex Lot 356

356	C	A/B	Selection of outers with <i>Laureates</i> frankings comprising 1852 to Potts' Point with boxed '6/O'CLOCK' h/s, 1853 to East Maitland (poor b/s) with 8d (cut-into at base), 1855 to Melbourne with 3d dull yellow-green SG 67 (full margins) & 'SHIP LETTER/FREE/GPO VICTORIA' d/s in red, 1855 to Hinton (fine b/s) and 1856 Port Macquarie (fine b/s) envelope to Sydney, condition variable. (5)	500
-----	---	-----	--	-----



Ex Lot 357

357	CPS		Wide-ranging group including 1850 stampless to Ireland, tiny 1853 cover with high 2d <i>Laureate</i> , 1880 to USA with 'PAID ALL'-in-oval h/s, 1866 & 1876 OHMS entires with different oval Money Order datestamps, 1888 'RETURNED LETTER' Envelope, 1887 two registered to Ireland, 1893 registered to Austria, 1894 local with 6d telegram cutout, 1909 with rare 'TPO 1 NORTH' machine b/s, 1909 with 'ENGLISH MAIL NSW' machine b/s etc, condition variable but generally fine to very fine. (18)	750
-----	-----	--	--	-----



Ex Lot 358

358	CΔ	A/B	1849-51 group with 1849 outer to London with superb oval 'PAID SHIP LETTER/[crown]/SYDNEY' d/s in red, the others with <i>Sydney Views</i> frankings comprising 1850 (Feb 7) entire from Sydney (fine b/s) to Collaroy with Plate I 2d <i>Late Impression</i> (full margins, crossed by a light filing fold) & 1850 entire to the same addressee with Plate III 2d (slightly cut-into at base), and 1851 large piece with <i>Laid Paper</i> 3d yellowish green x2, the left-hand unit with <i>No Whip</i> SG 43ef (full margins), some soiling, stamps alone Cat £1575. (4 items)	750
359	C	B	1851 envelope to "Gresford/Upper Paterson" with very fine <i>Sydney Views</i> Plate IV 2d SG 31 (large even margins) just touched by BN '55' of 'NEWCASTLE' (b/s), minor soiling; and 1852 large-part outer to Scotland with <i>Sydney Views</i> 3d yellow-green (two large margins, shaved at base & left), ironed-out vertical fold clear of the stamp. (2)	200

NEW SOUTH WALES - Postal History (continued)

Lot Type Grading Description

Est \$AUD



Lot 360

360	C	A+	<p>1853 cover to Newcastle with a superb example of the <i>Laureates Plate</i> 3d Prussian blue struck with light BN '64' of 'WEST MAITLAND' (crowned-oval b/s), arrival d/s of OC*7 on the face, endorsed "Unclaimed" in red & with another strike of the Newcastle d/s of NO*8, sent to the DLO with Sydney b/s of NO*9 and the unusual 'ADVERTISED/UNCLAIMED.' h/s (with the lower line tilted backwards). Superb! [With the original merchant's enclosure]</p>	800
-----	---	----	---	-----



Ex Lot 361

361	C		<p>1880s bundle of covers to the one addressee in Sydney virtually all with <i>DLR</i> 1d x2 or 2d frankings, mostly from the south-east of the Colony with many from Bega (one with 6d & 'REGISTERED/BEGA' h/s), Pambula & Bombala, also two with mss "X" cancels & "Wynndham" endorsements and 1882 with 'WYNDHAM' cds (ERD), two with Rays '617' of 'WOLLONGOUGH' both with 'MARSDENS' & 'MORANGARELL' transit b/s, etc, interest also in the Sydney backstamps, condition rather mixed. (60+)</p>	250
-----	---	--	--	-----



Lot 362

362	C	A	<p>1883 OHMS cover with 'The Australian Museum, Sydney' imprint at the top endorsed "via Naples/per Lusitania", to Bohemia with scarce franking of 'OS' Overprints 3d & 6d tied by 'OXFORD STREET' cds, superb 'VENEZIA' b/s & three 21mm disinfection chisel-slits, 'PRAG/PRAHA' arrival b/s. Beautiful; one of the finest disinfection covers we have seen.</p>	750
-----	---	---	--	-----



Lot 363

363	C	B	<p>1883 cover front to California with Perf 10 6d mauve x6 & 1/- black pair tied by Sydney duplex, 'PAID ALL-in-oval h/s in purple, minor blemishes. Remarkable item paying ten times the 6d rate.</p>	200
-----	---	---	---	-----

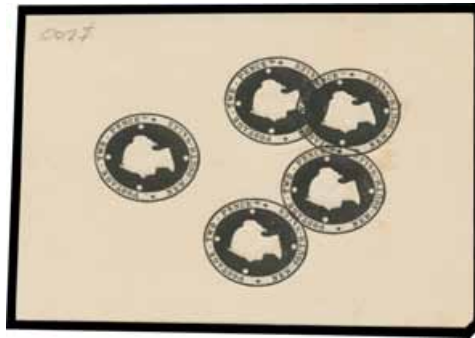
NEW SOUTH WALES - Postal History (continued)

Lot	Type	Grading	Description	Est \$AUD
-----	------	---------	-------------	-----------



Lot 364

364	C	A-	1883 Alfred Hilder (Sydney) merchant's cover to France via Naples "per Liguria" with attractive tri-colour franking of Diadems Perf 10 8d plus 4d & 1d paying 1/1d rate, central fold.	350
365	C	A	1897 illustrated advertising cover for <i>NSW Canning Factory</i> with Globe on the face & a mythical bird on the flap, to British Columbia, 'VICTORIA/BC' arrival b/s.	150T
366	C	A	1903 <i>Markell & Co Importers</i> advertising cover to New York (arrival b/s) "per SS Sierra" with NSW ½d, 1d & 2d strip of 3 tied by New Zealand boxed 'LOOSE LETTER' h/s (<i>Hosking</i> unlisted type; as #1542 but larger letters) of Auckland (b/s) & endorsed "Late Fee paid". [In NSW, letters to most overseas countries attracted a late fee of 2½d if posted in the GPO Late Fee Box or 5d - as here - if posted at the Central Railway Station or aboard ship]	200
367	C	A-/B	1909-11 OHMS covers with 'AUSTRALIAN MUSEUM SYDNEY' crest on the flap with 'OS/NSW' perfins ½d x5, ½d & 1d pair or double-rate with ½d block of 4 & 3d, a few minor blemishes. (3)	200T



Ex Lot 368

368	PS	A/B	POSTAL STATIONERY: Superior group with 1838 Sydney GPO embossed lettersheet (reprint), Postal Cards uprated 1d with German Consulate h/s, Scenic 1d x2 (one used in South Australia), & 1½d with scarce 'COCKLE CREEK' arrival cds, 1½d Letter Card with Rays 388' & 'WINDELLAMA' cds, Envelopes x3, PTPO Envelopes 1d for <i>Civil Service Stores</i> & 2d for <i>Foreign Agency Co</i> , finally 2d embossed essay five impressions in black, generally fine to very fine. (12)	400
-----	----	-----	--	-----