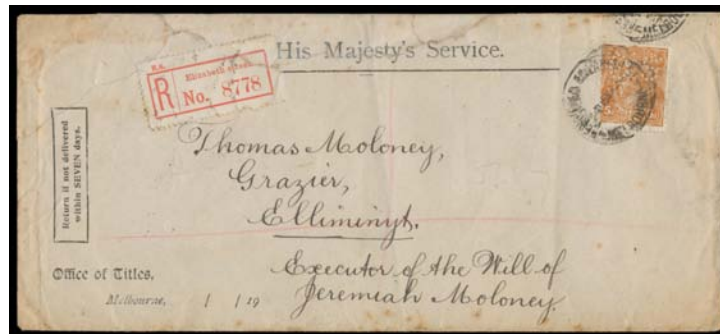


Lot Type Grading Description

Est \$AUD

COMMONWEALTH OF AUSTRALIA - Postal History**Ex Lot 369**

369	C/CL		Pre-decimal covers including 1917 KGV 1d & 2½d Roo tied by 'LATE FEE RLY STN' cds, 1934 5d Registration Envelope to Hawaii uprated with KGV 1d Engraved, 1941 censored airmail to New Zealand with 5d Ram pair, 1942 Wollongong airmail to Melbourne with a rare solo franking of 5½d on 5d Ram, 1953 to California with Tasmania Sesqui 2/- pair; also NSW 1840 pre-stamp entire to London; mixed condition. (8)	200
370	C	B	Large carton with predominantly pre-decimal registered covers with some better items, registered <i>Australia Post</i> internal mail with possible postmark interest, many items are of epic proportions! (100s)	Offer

**Ex Lot 371**

371	C/CL		Box of mostly long covers & some Postal Stationery, the majority to a solicitor in Colac (Vic), many registered & a couple taxed, good range of frankings including Kangaroos, KGV & Roo/KGV combinations, many perf 'OS' including Third Wmk 6d blue x3, KGV 5d <i>Rough Paper</i> (on two rare but defective covers, the stamps are good to fine), some postmark interest, condition variable. Almost certainly not checked for varieties. <i>Ex Mac Clarke. (200 approx)</i>	1,250
372	C		Wide variety including Military items with a range of 'PASSED BY CENSOR' h/s in violet plus some censor cachets, postcards, modern PPCs (mostly unused), PSEs, a few flight covers, and FDCs. (100s)	350
373	C		Predominantly 1980s commercial covers mostly sent to Kerang from within Victoria many with advertising inscriptions (some are illustrated) with a wide range of letter rate adhesives sighted. (few 1000s)	200
374	CPS		Hotchpotch in two cartons with 1930s-50s commercial covers including 1933 Express Delivery, 1941 £1 airmail rate censored with multiple franking, 1950s-80s FDCs, postal stationery including Aerogrammes, Territories including Norfolk Island 1960s FDCs, condition is very mixed. [Virtually all items are in sealed cellophane bags that have shrunk, causing damage to many of the items. Because of the labour involved to remove the material from the bags, this lot is offered entirely unreserved]. (100s)	Offer

COMMONWEALTH OF AUSTRALIA - Postal History (continued)

Lot Type Grading Description

Est \$AUD



Ex Lot 375

375	C/CL		KGVI selection including 1d Engraved on Dec 1913 PPC, 1927 to USA with Biplane 'USE THE AIR MAIL' Melbourne slogan cancel, 1926 <i>Lovelock & Co</i> advertising cover (<i>The "Dahlia" Separator</i>) to USA, 1928 advertising cover to USA with 2d red-brown (Cat \$350 on cover) plus 1d, 1937 airmail with Large Kooka 6d & Large Lyrebird 1/-, 1938(?) <i>jusq'ua</i> to USA with 1/4d plus KGVI 3d, 1939 registered airmail to England with 1/4d plus KGVI 3d pair & QM 1d, also registered official mail with 1936 with perf 'VG' 4d or 1940 with perf 'VG' 5d, condition variable. (23)	400
376	C/CL		Decimal covers with "Greetings From" types including 1967 with 13c Avocet & 1970 with 15c Timber pair, also 1971 <i>Cooma Bus Lines</i> illustrated with 30c Aboriginal Art, 1980s Priority Paid covers, also 1980s-90s Embassy/High Commission covers, 1990s Tax Pack covers x50+ all with \$20 Paintings solo frankings, official covers with 'OS/NSW' or 'VG' perfins. (few 100s)	350



Ex Lot 377

377	C/CL		Pre-decimal array including 1931-32 registered to Germany or South Africa with Kingsford Smith 6d Airmail, 1933 registered with 6d Large Kooka, 1954 QEII 1/0½d Registration Envelope uprated with KGVI 2½d brown, 1956 registered to USA with Olympics 4d 1/- & 2/- pair, plus certified, censored & taxed covers, condition variable. (150+)	300
378	C/CL		Miscellany with inward covers including 1885 from Great Britain to Bundaberg (Qld) registered with "Lilac & Greens" 3d, 5d & 1/- (5, including strip of 4), Austria 1948 censored to Melbourne Patent Attorney undelivered & returned, Barbados 1952 registered via Canal Zone, also Queensland postal stationery, Western Australia 1913 cover to Italy with 1d on 2d strip of 3, Norfolk Island 1947 registered to USA with Ball Bay 1d 2d 3d & 6d. (26)	200
379	C		<i>International Post</i> array predominantly \$1.50 rate to Netherlands with a reasonable variety of stamps, others at greetings card or postcard rates to England. (100s)	150



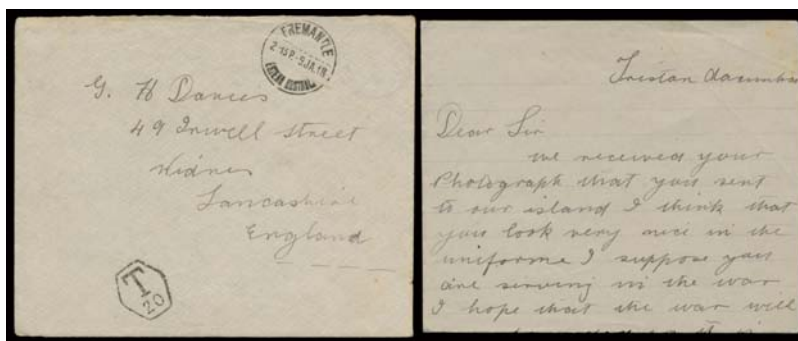
Ex Lot 380

380	*O		1909-43 inward mail with Postage Dues including 1903 to Tasmania with <i>Blank Tablet</i> 3d & octagonal 'T/15 c' h/s, 1934 to Mossman with oval 'TAX 4d' h/s, 1943 to Sydney with 'T20 CTMS.' & boxed 'T.../R h/s in violet paid with 1938 <i>Intaglio</i> 3d, plus additional covers including 1934 cover from Iraq. (8)	150
-----	----	--	--	-----

COMMONWEALTH OF AUSTRALIA - Postal History (continued)

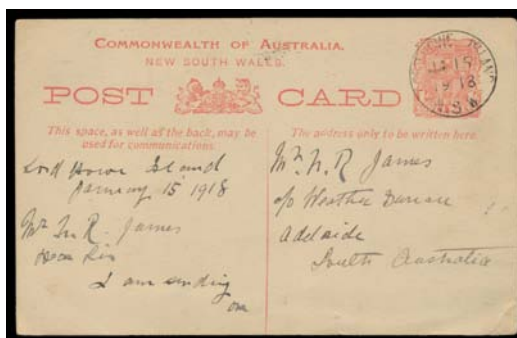
Lot Type Grading Description

Est \$AUD



Lot 381

381	C	A-	<p>1917 (late) stampless cover to England apparently from Western Australia but with a faint strike of the undated 'TRISTAN/DA/CUNHA' cachet Type I (SG C1, Cat £4000 on cover), superb strikes of the worn 'FREMANTLE/ ESTERN AUSTRAL ' transit cds & hexagonal 'T/20' h/s, endorsed on the flap "No Date/Received 8-3-18", minor spotting on the reverse; with the enclosed letter headed "Tristan dacunha" & signed "Sophy Rogers". One of the most extraordinary origin/destination covers we have ever offered.</p> <p>The unpunctuated handwriting appears to be that of a child: "...I hope that the war will end soon as it is a very cruel war...We have not had a ship for 18 months now...we are all looking forward to seeing the wailer [sic] again this month ther [sic] is no news at present...wishing you Compliments of the season from all on the island".</p> <p>Tristan da Cunha is the most remote inhabited island on the planet, even more isolated than Pitcairn. In 1816, it was formerly annexed by Great Britain. "Rogers" is one of only seven surnames shared by the islanders: an eighth was added only in 1986! Communication with the outside world has always been difficult. IAt least until the 1930s, Norwegian whaling vessels were the most regular visitors. Several covers from Tristan to Europe via Australia are recorded from south-bound voyages. <i>Jack Cole's</i> famous Tristan collection included an almost identical cover to this: Lot 17 (1998).</p>	1,500
-----	---	----	--	-------



Lot 382

382	PS	A-	<p>1918 use of NSW 1d Postal Card to Adelaide with fair strike of the 'LORD HOWE ISLAND/NSW' cds, edge blemishes.</p>	100
-----	----	----	--	-----



Lot 383

383	Δ	A	<p>1920 (c.) parcel piece with scarce franking of KGV 4d orange & Kangaroos Third Wmk 1/- x5 (including a vertical strip of 3) all perf 'OS' - paying the rate for a parcel weighing between 10 & 11 pounds (the maximum allowed weight) - tied by a large-part strike of the enormous 'CHIEF PARCEL OFFICE/MELBOURNE' undated rubber cancel (no serifs). <i>Ex Mac Clarke.</i></p>	300
-----	---	---	--	-----

COMMONWEALTH OF AUSTRALIA - Postal History (continued)

Lot Type Grading Description Est \$AUD



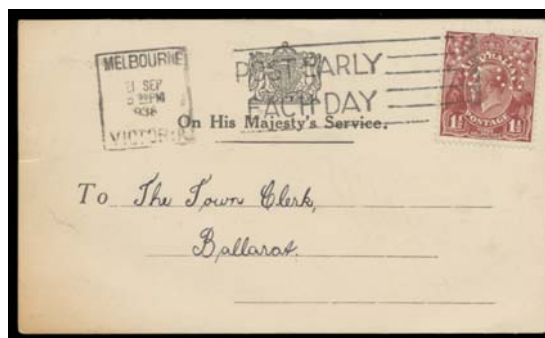
Lot 384

384	C	A-	1920 (c.) parcel piece with complete black/red 'INTERSTATE/PARCEL LABEL' and rare franking of KGV 5d brown & Kangaroos Third Wmk 3d olive & 2/- brown horizontal pair all perf 'OS' - paying the rate for a parcel weighing between 8 & 9 pounds - tied by a virtually complete strike of the enormous 'CHIEF PARCEL OFFICE/ MELBOURNE' undated rubber cancel. <i>Ex Mac Clarke. [A very rare usage; Kevin Nelson's rather similar item sold for \$2875 at our auction of 27/11/2010]</i>	2,000
385	C	A/B	1929-35 flight covers attractively presented in photo album with a good range of airmail handstamps in violet, condition a bit mixed. (31)	150



Lot 386

386	C	B	1930 cover with 'RMMS Aorangi' imprint on the flap, to Manly with KGV 2d tied by one of three strikes (one on the reverse) of the rare 'QUARANTINE/_JA/30/NSW' cds, two corners clipped as was common for disinfected mail, light vertical fold. [The Quarantine Station, situated at North Head, was used to quarantine people arriving aboard ship on which an infectious disease had been reported. The earliest such event recorded was in 1828. In 1853, the burial ground was moved so it was no longer the first thing seen by new arrivals! Occasional use was made of the facility until about 1960, after which events were infrequent. The last occasion was for the "Nikki Maru" in 1972. The "Aorangi" was quarantined twice, in 1930 & in 1935, on both occasions for smallpox. Some form of postal service was available from the 1870s. The post office was finally closed c.1939]	400
-----	---	---	--	-----



Ex Lot 387

387	C/CL	A-	1930s bundle of mostly long official covers - some are fronts only - with good range of adhesives including 'VG' perfins - very scarce on KGV values - on CofA 1d pair, 1d x3 & 4d (registered), 1½d (on postcard), 2d, & 5d (remarkably late usage in 1951!), also 1928 <i>Geelong Centenary Celebrations</i> illustrated cover, 1934 airmail to GB with Vic Centenary 2d x2 & 1/- plus two Celebrations labels, a few better postmarks including South Australian 'POSTED IN LATE FEE BAG', condition variable. Good lot. <i>Ex Mac Clarke. (44 items)</i>	400
-----	------	----	--	-----

COMMONWEALTH OF AUSTRALIA - Postal History (continued)

Lot Type Grading Description Est \$AUD



Ex Lot 388

388	C	B	1942 OHMS cover Darwin to Perth with rare solo franking of 5½d on 5d Ram tied by weak strike of 'RELIEF NO 3/18FE42/SOUTH AUST', sent the day before the Japanese commenced the bombing of Darwin; also 1925 inwards registered cover from Brazil to <i>Government Hospital</i> Darwin with Port Said, Adelaide & Darwin b/s, some blemishes. (2)	250
389	C/CL		1959-65 overseas airmail 2/3d rate covers including 1959 <i>Noyes Bros</i> meter to England, 1961 <i>Relide Swiss Watches</i> triple rate advertising cover to Germany with Wattles Yellow Paper x3, 1963 double rate with Royal Visit pair, 1965 to Switzerland with ICY, 1966 with Wattles White Paper, plus six other items. (11)	200
390	C		1960s-2000s covers with solo frankings including 13c Avocet, 30c QANTAS, 35c Beef, 35c Mapping, 35c Olympics, 55c Hovercraft, 60c Australia, PPCs to England with solo frankings including 15c Blue Gum, 15c Aboriginal Art, 18c Fauna, 18c Rehabilitation, 25c Diving, 25c PNG Independence, 27c Commonwealth Day, 35c Yachting, 63c Living Together, 63c Robotics & 80c Rock-Wallaby, multiple frankings including 9c on 8c Gem pair. Some of the better items are duplicated, condition variable. (100s)	400



Ex Lot 391

391	C/CL		ADVERTISING COVERS: KGVI/QEII selection including 1938 <i>Victorian Master Butchers</i> jus'qua to USA, 1939 <i>Lion Brand</i> postcard with colourful advertising, 1941 <i>Foster's Lager</i> unclaimed, 1948 <i>Victoria Amateur Weight Lifters' Association</i> registered, 1957 <i>Stamp News</i> to New Zealand, 1958 <i>Melbourne Film Festival</i> , <i>Relide Watches</i> 1958 airmail with Bird illustration & 1960 by surface with Diver illustration both to Germany, 1965 "Greetings From..." with 1/2d Tasmanian Tiger, etc. Good lot. (40)	300
-----	------	--	--	-----



Ex Lot 392

392	C		CONCESSIONAL MAIL: Airmail Selection to England including 1949 with KGVI 3d brown and 'RAAF/ CONCESSION POSTAGE RATE' & 'PASSED FREE OF POSTAGE' straight-line h/s, 1951 from HMAS Taranga (based at Manus Island) with Hargraves 3d, 1955 FDC with QEII 3d with 'UK SERVICE LIAISON/ON ACTIVE SERVICE/.../STAFF IN AUSTRALIA' cachet used on mail from the Atomic Testing Site at the Montebello Islands, 1956 Forces Air Letter, 1960 with AAT 2/3d tied by 'MIL PO KAPOOKA' cds, 1962 airmail with QEII 3d 'BRITISH DEFENCE FORCES'.../CONCESSION POSTAGE' cachet, 1975 from the <i>British High Commission</i> with 6c Gem & 'BRITISH DEFENCE FORCES MAIL/[crown]' circular h/s in red, plus two others items sent from Woomera, condition variable. (9)	450
-----	---	--	--	-----

COMMONWEALTH OF AUSTRALIA - Postal History (continued)

Lot	Type	Grading	Description	Est \$AUD
393	C	B	TELEGRAMS: Wide variety of forms and envelopes including numerous illustrated commemorative types unused (some quantity, noted NSW Sesquicentennial form & envelope) and used, unused 'PHONOGRAMS' & WWII "Fatal Casualty" telegrams, used <i>Ure Smith</i> 'TEL-U-GRAM', unused group of stampless OHMS wrappers pre-addressed to Telegraph Accounts at Melbourne GPO. etc, some postmark interest, lots of duplication. An interesting lot that will appeal to new collectors or specialists. (250+)	250