

Lot Type Grading Description

Est \$AUD

POSTAL CARDS



Lot 320

320 Ω A **1879-92 Half-Penny** ½d die proof in black on surfaced card reduced to stamp-size. [The ½d adhesive was issued only in 1885]

300



Ex Lot 321

321 PS **1879-92 Half-Penny** annotated study on 12 pages including Post Office band (front only) for 12 cards, PC1 with 'SPECIMEN.' h/s, "Dies" as per *Pope & Thomas* x11, early usage of JA29/1880 with electoral advert, PC6 on White with 'NOT KNOWN/BY LETTER CARRIERS' h/s, PC7 in Sepia/White unused x2 & uprated to Victoria, 1903 Post Office Emergency Issue with ½d stamp affixed below used to New Zealand, etc, generally fine to very fine. (20)

600



Lot 322

322 PS A- **1879** ½d brown/pinkish PC1 with message headed "Jubilee Celebration Committee/Perth 7 May 1879", minor vertical bend at left, Perth duplex of MY8/1879. Issued 1/5/1879. The PSAC's ERU is 29/1/1880. This is eight months earlier, in the first week of issue & is **the earliest recorded usage of WA postal stationery** by seven months. [The Jubilee referred to must have been for the 50th Anniversary of the Swan River Settlement]

250



Lot 323

323 PS A **1879** ½d brown/pinkish PC1 to Sweden in 1894 but not uprated so taxed "5c" amended to "10c" both in blue pencil with superb Swedish 'T' h/s & mss "16öre" also in blue, 'GOTEBORG' arrival b/s. Most attractive. *Ex Dr Cecil Walkley*: acquired for \$977.

500

POSTAL CARDS (continued)

Lot Type Grading Description

Est \$AUD



Ex Lot 324

324 PS A-/B **1879** 1d blue PC2 to Germany in 1897 uprated with 1d tied by KGS duplex, & to London in 1899 uprated with 2d grey, also ½d brown/white PC6 to England in 1897 uprated with 1d, a few minor blemishes, all apparently commercial. A very scarce trio. [The 1892 Regulations allowed for the uprating of Postal Cards with a ½d stamp only. All other upratings in the Colonial Period were thus contrary to the Regulations] (3)

200



Ex Lot 325

325 PS **1879-1910 Penny** annotated study on 42 pages including Post Office band (front only) for 12 cards, PC1 with 'SPECIMEN.' h/s, "Dies" as per *Pope & Thomas* x16, 1902 to NSW redirected to New Zealand, 1894 & 1900 taxed cards to GB & Germany, 1886 irregular usage in GB & taxed; "Melbourne Zinco" PC8 unused x2, 1903 *DLR* Stereos Used in Melbourne PC9 unused & used x3; "Available only for the Commonwealth..." PC 10A used x3 & with 'NY' Flaw PC10B unused & used x4 (one a new ERU of MR3/04); "Available only for the United Kingdom..." PC13 unused & used x9 (one the ERU of NOV23/1905, one to Singapore); 1907 Original Design Melbourne Printings PC15 unused x2 & used x4 (one to the USA & taxed); Unbordered Issues Unsurfaced PC17 unused x2 (one unusually without *Burns Philp* address) & used x2, and Surfaced PC18 unused x6 (one noted as "Rare Thick Card") & used x5 (one to India), etc; some postmark interest, condition variable but generally good to very fine. A very good lot. [Includes a comparison of PC18 cards based on *Mogens Juhl's* description of the "Handpainting Card", & varying height of the Coat-of-Arms in relation to the stamp] (73)

1,600



Lot 326

326 PS B **1879** 1d blue PC1 to Perth with poor 15-bars '21' & reasonable 'VASSE' cds of DE17/1879 being the earliest recorded usage of PC2, minor spotting. Issued 1/5/1879. *Pope & Reynolds Census* #16.

100

POSTAL CARDS (continued)

| Lot | Type | Grading | Description | Est \$AUD |
|-----|------|---------|-------------|-----------|
|-----|------|---------|-------------|-----------|



Lot 327

| | | | | |
|-----|----|---|---|-----|
| 327 | PS | B | 1890 2d carmine PC3 to Germany with 'ALBANY/JY28/91/WA - KGS' duplex & 'HAMBURG' arrival cds of 2.9.91, minor blemishes. Very rare contemporary usage, absent from <i>Margaret Hamilton's</i> collection: most used examples are later philatelic contrivances. <i>Ex Peter Basterfield</i> (sold for £575) & <i>Dr Ed Druce</i> (\$172, where the significance of this item was completely overlooked). [Issued 1/1/1890 for the long sea route to GB. On 1/1/1891, the 2d rate - somewhat inadvertently - was extended to all overseas destinations. Two months later, this error was rectified. From 1/10/1891, the overseas rate became 1½d. This item should have been taxed but the rates chaos in mid-1891 probably resulted in many such oversights] | 500 |
|-----|----|---|---|-----|



Lot 328

| | | | | |
|-----|----|---|--|-------|
| 328 | PS | A | 1890 2d carmine as PC3 but on a very unusual translucent white stock, curious 'C12' h/s in violet on the reverse, unused. Possibly a proof in the nature of a card stock trial. [The normal cards are quite opaque. This, however, when held to a light source allows the outline of an object behind it to be discerned] | Offer |
|-----|----|---|--|-------|



Lot 329

| | | | | |
|-----|----|---|---|-----|
| 329 | PS | B | 1890 3d green PC4 with message dated "16/7/90", very early usage to Sussex with superb 'PERTH/JY23/1890/ =WESTERN-AUSTRALIA= - GPO' duplex, corner bend at upper-right. Very rare contemporary usage, absent from <i>Margaret Hamilton's</i> collection: most used examples are later philatelic contrivances. [Issued 1/1/1890 for cards to GB via either Naples or Brindisi. The rate was effectively revoked on 1/1/1891, when the 2d long sea rate was effectively extended to all places beyond the Colony. The 3d cards then became redundant] | 500 |
|-----|----|---|---|-----|

POSTAL CARDS (continued)

| Lot | Type | Grading | Description | Est \$AUD |
|-----|------|---------|-------------|-----------|
|-----|------|---------|-------------|-----------|



Lot 330

| | | | | |
|-----|----|----|---|-----|
| 330 | PS | A+ | 1892 1/2d sepia PC7, unused. Superb! [The illustration is on our website] | 100 |
|-----|----|----|---|-----|



Lot 331

| | | | | |
|-----|----|----|--|-----|
| 331 | PS | A- | 1892 1/2d sepia PC7 locally used with Perth duplex of NO13/1895. | 250 |
|-----|----|----|--|-----|



Lot 332

| | | | | |
|-----|----|----|--|-----|
| 332 | PS | A- | 1892 1/2d sepia PC7 locally used with Perth duplex of OC26/1894, City of Perth election notice on the reverse. | 250 |
|-----|----|----|--|-----|



Lot 333

| | | | | |
|-----|----|---|--|-----|
| 333 | PS | B | 1902 "Melbourne Zinco" 1d dull blue PC8 with printed advice for the Conqueror Tobacco Works, to Collie (poor b/s) with Fremantle duplex & Perth transit cds, minor bend. Very scarce. Ex Peter Basterfield: sold for £149. [This printing is identified by the general rough appearance, distorted lettering below the Coat of Arms, and a Spot after Central Bar of 'E' of 'THE'] | 250 |
|-----|----|---|--|-----|

POSTAL CARDS (continued)

Lot Type Grading Description

Est \$AUD



Lot 334

334 PS A- 1902 1d(+1d) Reply Postal Card message-half to Holland with message dated "August 3rd", uprated with ½d tied by 'SHIP MAIL ROOM/AU3/03/PERTH WA - GPO' duplex.

175



Lot 335

335 PS A- 1902 1d+1d Reply Postal Card to London with message dated "12.1.03", uprated with ½d tied by 'FREMANTLE/ JA12/03/=W.A= - PO' duplex, intact. The ERU, being 6 weeks earlier than the PSAC's ERU of 1/4/1903. [The sender writes: "Isn't this a rummy idea. You detach reply card & return. I suppose the theory is actually back blox so that an out of the way squatter can reply at once without travelling miles to nearest Post Office..."]

250



Lot 336

336 PS A- 1902 1d+1d Reply Postal Card with No Stop after 'CARD' on the Message-Half, philatelic usage in 1905 to Switzerland - no message - with ½d tied by 'ALBANY' duplex, 'BERN' arrival b/s. We have not previously been aware of this variety.

250



Lot 337

337 PS A- 1902 1d+1d Reply Postal Card with No Stop after 'CARD' on the Message-Half, CTO at Fremantle in 1910.

150

POSTAL CARDS (continued)

Lot Type Grading Description

Est \$AUD



Lot 338

| | | | | |
|-----|----|---|---|-----|
| 338 | PS | B | 1902 1½d+1½d Reply Postal Card, irregular commercial usage to Hobart in 1908 with message written on the face stating "What do you think of my pet?" & photograph of a thorny devil (a desert lizard) affixed to the reverse of the message-half, 'MENZIES' duplex, minor blemishes, intact. Rare commercially used. [Until 1906, the face of all postcards was undivided because only the address could be written on that side. Therefore, this item would have been an illegal usage at the time of issue. However, by the time of use, it was permitted to place the message on the face] | 500 |
|-----|----|---|---|-----|



Lot 339

| | | | | |
|-----|----|-----|---|-------|
| 339 | PS | (B) | 1905 1d with Admonition "Available only for the Commonwealth..." handstamped 'ALSO AVAILABLE FOR UNITED KINGDOM WITHOUT EXTRA POSTAGE.' in blue PC12, repaired 20mm tear between 'POST' & Coat of Arms, unused. Rare. [On 1/6/1905, the postcard rate to the UK was reduced to 1d. Only 240 were issued, of which many had the Defective 'NY' in 'ONLY' Flaw. Only three unused and three used examples have been recorded. Margaret Hamilton's unused example - discolouration on the reverse - sold for \$7475] | 2,000 |
|-----|----|-----|---|-------|



Lot 340

| | | | | |
|-----|----|----|--|-------|
| 340 | PS | A- | 1905 1d with Admonition "Available only for the Commonwealth..." handstamped 'ALSO AVAILABLE FOR UNITED KINGDOM WITHOUT EXTRA POSTAGE.' in violet PC12, a couple of very minor blemishes, unused. Ex Dr Ed Druce: acquired for an absurdly low \$2185, less than 30% of the price paid 8 years earlier for Margaret Hamilton's unused example! | 5,000 |
|-----|----|----|--|-------|

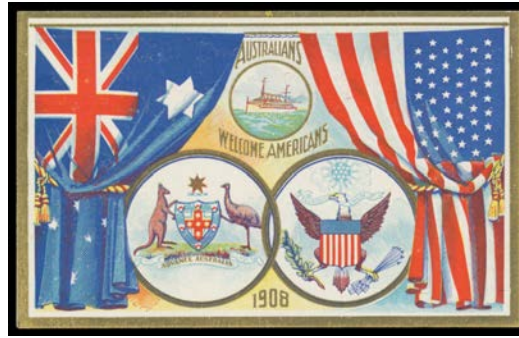
POSTAL CARDS (continued)

| Lot | Type | Grading | Description | Est \$AUD |
|--|------|---------|---|-----------|
|  | | | | |
| Lot 341 | | | | |
| 341 | PS | C | <p>1905 1d with Admonition "Available only for the Commonwealth..." handstamped 'ALSO AVAILABLE FOR UNITED KINGDOM WITHOUT EXTRA POSTAGE.' in blue PC12, to East Perth with Perth cds of 28AU05, overall aging still a presentable example of one of the great rarities of Australian Postal Stationery. <i>Ex Dr Cecil Walkley</i>: acquired for \$2875 (2010). [<i>Margaret Hamilton's</i> used example - minor blemishes - sold for \$7975. Another example with minor faults sold for \$6325 at our auction of 11/7/2008]</p> | 3,000 |
|  | | | | |
| Ex Lot 342 | | | | |
| 342 | PS | | <p>1905 & 1912 Surcharges annotated study on 5 pages with '1½d.' on 2d carmine PC14 unused, apparently commercial usages 1907 to Germany & 1910 to Holland, & philatelic usages 1905 to France & 1911 Toowoomba (Qld) to South Australia; and 'ONE PENNY.' in Violet on 2d carmine unused x2 & two apparently commercial local usages in 1912; a few blemishes but generally good to very fine. (9)</p> | 500 |
|  | | | | |
| Lot 343 | | | | |
| 343 | PS | A- | <p>1905 '1½d.' on 2d carmine PC14 philatelic usage with brief message, to France with Perth cds of 30SE05, French 'TOURCOING/29-10/05/NORD' arrival cds on the face. Very scarce. Issued -/4/1905. The PSAC's ERU is 28/6/1906, so this usage is nine months earlier.</p> | 250 |

POSTAL CARDS (continued)

Lot Type Grading Description

Est \$AUD



Lot 344

344 PS A+ 1908 Visit of the American "Great White Fleet" 1d PC16, unused. Superb! [These generic cards were printed in NSW. The relevant Queensland, South Australian, Tasmanian, or Western Australian 1d stamp was overprinted at Melbourne. The WA 1d electro with *Decapitated Swan* flaw (*Pope & Thomas's "Die 11"*) is common to this and the next two lots]

250



Lot 345

345 PS A+ 1908 Visit of the American "Great White Fleet" 1d PC16, unused. Superb!

250



Lot 346

346 PS A 1908 Visit of the American "Great White Fleet" 1d PC16, to "Dudinalup/Via Balingup" with light 'COTTESLOE' cds of 22SP08 & light unframed 'BALINGUP' arrival b/s. Issued 1/9/1908: examples used in the month of issue are scarce & desirable. [The message is unusually between children, the senders practising their rudimentary French! Dudinalup is a locality near Nannup: it has never had a post office. *Hugh Freeman's* philatelic usage to the USA sold for \$862 at our auction of 23/9/2011]

750



Lot 347

347 PS A+ 1909 New Style (128x94mm) 1d "Paris" blue on **Unbordered & Unsurfaced Stock** PC17, printed address for *Burns Philp* & advice re return of empty beer barrels, unused. Superb!

150

POSTAL CARDS (continued)

Lot Type Grading Description Est \$AUD



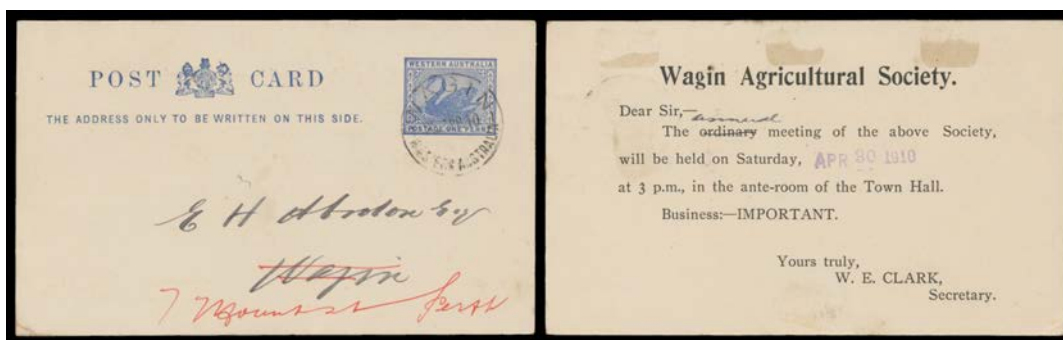
Lot 348

348 PS A- 1909 New Style (128x94mm) 1d "Paris" blue on Unbordered & Unsurfaced Stock PC17 with the message headed "Northam/April 24 1910", to England with indecipherable cds, minor blemishes. 200



Lot 349

349 PS A 1909 New Style (128x94mm) 1d dull blue on Unbordered & Unsurfaced Stock PC17.1 with printed advice for the National Bank of Australasia, to a branch in Victoria with 'SHIP ROOM/PERTH' cds. [The PSAC notes this shade is from a second printing, made in July 1910] 200



Lot 350

350 PS A- 1909 New Style 1d blue on Unbordered & Unsurfaced Stock as PC17 but smaller size (126x77mm) with Wagin Agricultural Society notice printed on the reverse, locally used with 'WAGIN' cds of 25APR10, redirected to Perth, minor corner bend at lower-left. Unlisted & the only example we have seen. [PC17 measures 126x90mm or slightly larger. NB: The printed notice is perfectly positioned for the smaller-size card] 500



Lot 351

351 PS B 1909 New Style (140x90mm) 1d "Paris" blue on Unbordered & Highly Surfaced Stock PC18, to "Mr Goss/Little Zoo/Perth Markets" with Perth Krag machine cancel of 29OCT10, the surface a bit rubbed. 200

POSTAL CARDS (continued)

| Lot | Type | Grading | Description | Est \$AUD |
|-----|------|---------|-------------|-----------|
|-----|------|---------|-------------|-----------|



Lot 352

| | | | | |
|-----|----|----|---|-----|
| 352 | PS | A- | 1909 New Style (140x90mm) 1d "Paris" blue on Unbordered & Highly Surfaced Stock PC18, to "The Postmaster/Albany" asking for mail to be redirected, Perth <i>Krag</i> machine cancel of 8FEB11. | 250 |
|-----|----|----|---|-----|



Lot 353

| | | | | |
|-----|----|----|---|-----|
| 353 | PS | A- | 1909 New Style (140x90mm) 1d dull blue on Unbordered & Highly Surfaced Stock PC18, to Perth with 'HARVEY' cds of MR24/11. [The PSAC notes this shade is from a second printing, made in August 1910] | 200 |
|-----|----|----|---|-----|



Lot 354

| | | | | |
|-----|----|----|--|-----|
| 354 | PS | A- | 1909 New Style (140x90mm) 1d dull blue on Unbordered & Highly Surfaced Stock PC18, to Württemberg uprated with ½d, Perth <i>Krag</i> machine cancel of 29AUG11 & the ½d tied by 'SHIP ROOM/PERTH' cds of the following day. | 250 |
|-----|----|----|--|-----|



Lot 355

| | | | | |
|-----|----|---|---|-----|
| 355 | PS | A | 1911 New Value 1½d blue on grey-green card PC19, unused. Rare. [Only a handful of unused cards, and four used examples, have been recorded. <i>Margaret Hamilton's</i> unused example sold for \$1322] | 500 |
|-----|----|---|---|-----|

POSTAL CARDS (continued)

| Lot | Type | Grading | Description | Est \$AUD |
|-----|------|---------|-------------|-----------|
|-----|------|---------|-------------|-----------|



Lot 356

| | | | | |
|-----|----|---|--|-----|
| 356 | PS | A | 1911 New Value 1½d blue on bright green card PC19var, CTO with Perth cds of 29MR12. [The PSAC doesn't note the two quite different stocks in this issue] | 100 |
|-----|----|---|--|-----|



Lot 357

| | | | | |
|-----|----|----|---|-----|
| 357 | PS | A- | 1912 Surchage 'ONE PENNY.' in Blue on 2d carmine PC20 with printed advice for the <i>Karrakatta Club</i> , to Cottesloe with poor machine cancel. | 200 |
|-----|----|----|---|-----|