



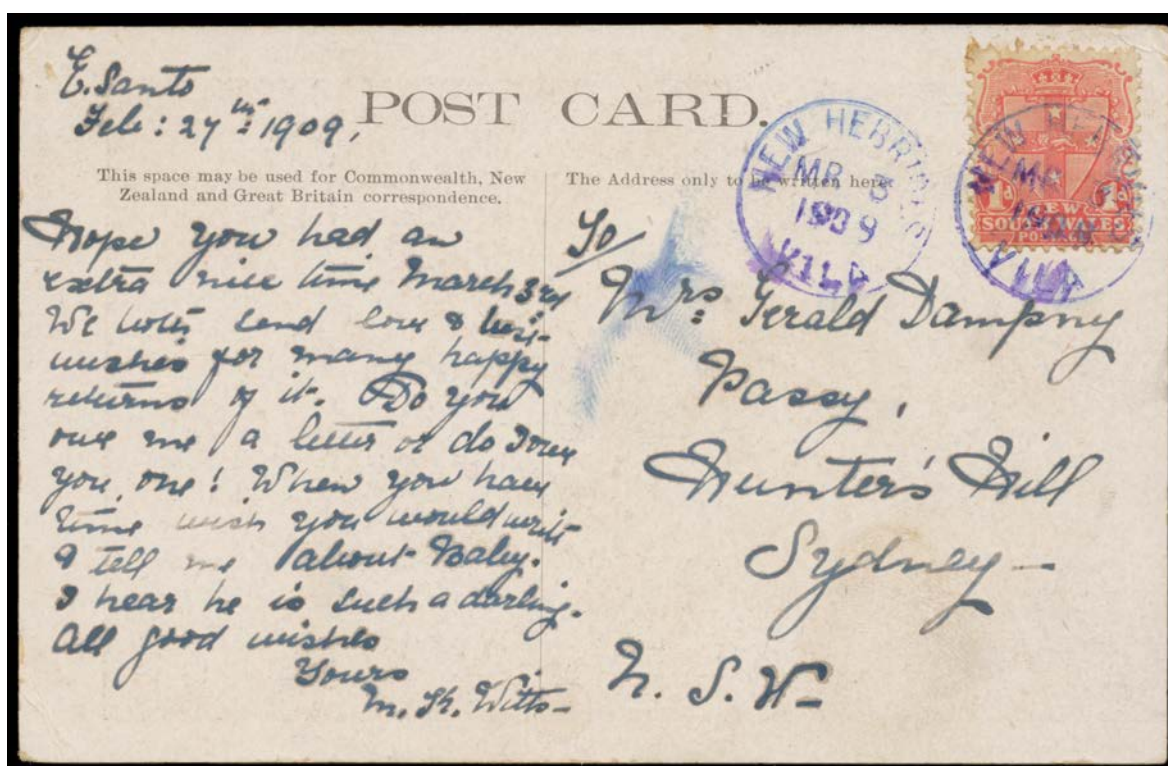
Lot Type Grading Description

**DOCUMENTS & EPHEMERA**

47	L		Government papers comprising 1886 re Annexation of the Kermadec Islands (trimmed), 1906 re New Hebrides Condominium & the associated Convention, 1920 re New Guinea Mandate, and 1920 re Nauru Mandate & Phosphate Mining; also "The Times" of 4/4/1877 with a description of Fiji, original cinema poster for "Forty Thousand Horsemen" (badly damaged & very fragile), and catalogues for exhibitions by <i>David Hockney</i> and <i>Brett Whiteley</i> . (9 items)	200
51	L	A	<b>NEW HEBRIDES:</b> c.1880 two album pages (263x365mm) with seven albumen print photographs of drawings affixed including "Rongavai or Cannibal Club House", "Graves of murdered Missionaries Dillon Bay Erromango", "Mysterious Hut and Images, Mallicollo New Hebrides", three untitled groups of idols & one of a mission house, the reverse of one page with superb albumen print (270x220mm) of Govett's Leap in the Blue Mountains (NSW).	250

**NEW SOUTH WALES - Postal History**

284	C	(A-)	1839 lengthy large-part entire to "James Harris of Dublin", very fine oval 'PAID SHIP LETTER/LONDON' d/s in red & [crown]/GENERAL POST OFFICE/SE*28/1839/SYDNEY' arrival b/s. [The letter advises <i>Harris</i> against going to the South Seas as a missionary. Either he ignored the advice or, as seems likely, the letter arrived after his departure for the New Hebrides. On 20/11/1839, he & <i>John Williams</i> were killed & eaten by cannibals at Erromanga in the New Hebrides]	250 <sup>T</sup>
-----	---	------	---	------------------

**NEW HEBRIDES**

Lot 648

648	C	A-	1909 usage of <i>Hume's</i> PPC "Giant Yam, New Hebrides" to Sydney with NSW 1d Arms tied by one of two strikes of the British 'NEW HEBRIDES/MR3/1909/VILA' cds most unusually in violet, the message headed "E Santo [= <i>Espiritu Santo</i> ] Feb 27th 1909" & signed "MK Witts" states "...Do you owe me a letter or do I owe you one!...", a couple of minor blemishes. A very rare & desirable commercial mail item, being a very late usage of NSW stamps in the Condominium. The Vila post office opened 1/10/1908 and NSW stamps were permitted only until 30/11/1908, but this item shows that later usage was tolerated. [We have checked illustrations of more than 40 NSW Period covers & cards. This is the only one with the cds in violet. <i>Roland Klinger</i> records only one later item with NSW stamp, a defective cover with French cds of 9/OCT/09]	1,500
<p><i>Maurice Myles Witts</i> arrived in the New Hebrides in 1904 &amp; established a coconut plantation called "Lelek". This card was sent by his wife <i>Mabel Kate Witts</i>. <i>Roland Klinger's</i> website states that <i>Lelak</i> may have been on Lathu Island off Hog Harbour. He suggests that the Vila cds was used aboard ship - in this case, the <i>Burns Philp</i> vessel "Malaita" - but that seems to us to be unlikely.</p>				

**PHILATELIC LITERATURE**

894	L	A	<b>NEW HEBRIDES:</b> "New Hebrides Cancellation Study 1892-1980" by Phillips et al (1995), loose leaf; and "Fakes, Forgeries, Imitations, Phantoms and Leaps in the Dark" by Crompton & Klinger (2008), 80pp softbound.	25
-----	---	---	---	----

**PHILATELIC LITERATURE - Proud Bailey Titles**

The books in this section are all by or edited by Edward (Ted) Proud RDP, one of the most prolific philatelic authors of all time. In most cases these are the latest & in some cases the only postal history & postmark reference books that are generally available. All these books are hardbound, in as new condition, with colourful dust-jackets. The estimates are generally between 40 & 60% of retail prices. We use this series all the time and highly commend these books to our clients.

---

Lot	Type	Grading	Description	Est \$A
-----	------	---------	-------------	---------

---

***PHILATELIC LITERATURE - Proud Bailey Titles***

932	L	A	<b>GILBERTS &amp; NEW HEBRIDES:</b> "The Postal History of the Gilbert and Ellice Islands and New Hebrides" (2006), 280pp.	60
-----	---	---	--	----

---