



Lot Type Grading Description

HOWARD JOHNSON COVERS

All the lots in this section are 1935-1940 covers addressed to Adelaide collector Howard Johnson. Although obviously philatelic, they did pass through the post, and in many cases they are the only covers available for particular offices, datestamps, or registration labels. Standard covers generally have KGV 1/2d orange x2 & two strikes of the datestamp. Registered covers mostly have KGV 5d only & one strike but usually with another on the reverse. Quality of the strikes is variable but most are fine to superb. For price comparisons, see the selections of registered covers offered in our auctions #129 & 130. They can be viewed on our website.



Ex Lot 2610

2610 C A/A- 'LATE FEE/ADELAIDE RLY' to 'STOCKPORT' all-different unrated but how the following aren't at least 'R' is beyond us: 'BUTLER TANKS', 'CALIPH', 'COOBOWIE', 'CUNGENA', 'ETHELTON', 'HYDE PARK', 'KLEMZIG', 'KULKAMI', 'KULPARA' & 'KYBUNGA', etc. (99)

500



Ex Lot 2611

2611 C A/A- Rated R group including 'CARAWA', 'CHARRA', 'CYGNET RIVER' (Kangaroo Island), 'DAWSLEY', 'FLAXLEY', 'GUM CREEK', 'KRINGIN', 'KULDE', 'LOWBANK' & 'MUSTON' (Kangaroo Island), etc. (22)

200



Ex Lot 2612

2612 C A/A- Rated RR group including 'BELVIDERE', 'CLEMETS GAP', 'COMAUM', 'GLANVILLE BLOCKS', 'HARBEN VALE', 'KOONGAWA' (one strike only), 'KOPPIO', 'KUITPO COLONY', 'LAKE VIEW' & 'YALKURI' etc. (15)

350



Ex Lot 2613

2613 C A/B Registered group with red/white labels from 'CLEVE', 'COBDOGLA', 'FINNISS', 'GLADSTONE' with provisional label & 'MILENDELLA', also 'MARMON JABUK with red & black/white label. (6)

240

HOWARD JOHNSON COVERS (continued)

Lot Type Grading Description

Est \$A

**Ex Lot 2614**

2614 C A/A- Registered group with **blue & black/white labels (with blue numerals)** including from 'BRAMFIELD', 'CALCA' (squared-circle), 'CALOOTE', 'COULTA', 'FARRELLS FLAT', 'FREWVILLE', 'GILLES PLAINS', 'KALYAN', 'KRINGIN', 'MANTUNG RAILWAY', 'MARION BAY' (rated RR), 'NATURI', 'OUTER HARBOUR' (with 'HARBOR' on label), 'PENNESHAW' (Kangaroo Island), 'STONE HUT', etc. **(44)**

800

**Ex Lot 2615**

2615 C A/A- - ditto, but all with provisional labels (that consequently have **no black printing**) including from 'BOULEROO', 'JULIA', 'MACGILLIVRAY', 'MAMBRAY CREEK' (very fine b/s; rated RRR), 'NELSHABY', 'SHEA OAK LOG', 'WARATTA VALE' (squared-circle), 'WARROW' (RR) & 'WAURALTEE' (squared-circle) etc. **(16)**

400

**Ex Lot 2616**

2616 C A/A- Registered group with blue & black/white labels (**with black numerals**) including from 'COOMANDOOK', 'CUDLEE CREEK', 'GALGA', 'MONASH', 'MT MARY', etc, a few provisional types & a few "rat tail" varieties. **(22)**

400

**Ex Lot 2617**

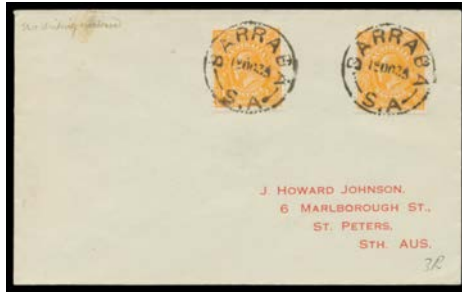
2617 C A/A- Registered group with **blue/white labels** including from 'COPEVILLE', 'ELLISTON', 'KOPPIO' (rated RR), 'KULKAMI', 'KUNLARA' (RR), 'LOWALDIE', 'MAGGEE' (very fine b/s; RR), 'MARAMA', 'MULOOWURTIE' (RR), 'UPPER STURT', etc. **(48)**

500



HOWARD JOHNSON COVERS (continued)

Lot Type Grading Description Est \$A



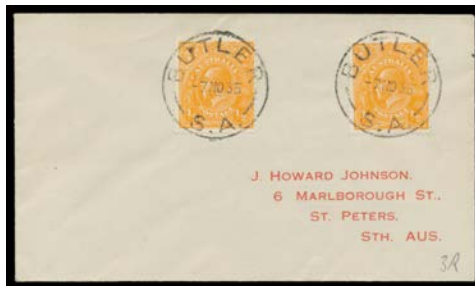
Lot 2618

2618 C A- A1- **Baraba:** 'BARRABA/12OC35/S.A.' (spelling error). Rated RRR. PO -8/1877; RO 31/5/1922; PO 1/7/1927; closed 15/1/1972. 100



Lot 2619

2619 C B A1 **Brownlow:** 'BROWNLOW/26OC35/S.A.', minor water-staining. Rated RRR. PO 1/4/1908; RO -/1/1910; PO 13/8/1910; RO 18/3/1921; PO 14/7/1924; closed 14/12/1964. [Excellent football thematic item] 100



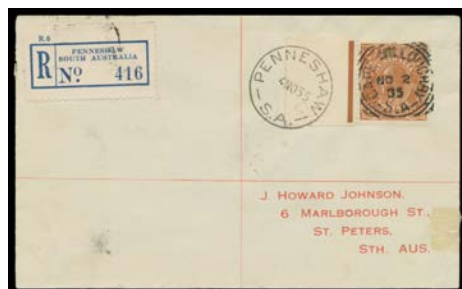
Lot 2620

2620 C A A1 **Butler (1):** 'BUTLER/7NO35/S.A.'. Rated RRR. PO 3/3/1906; closed 30/11/1936. 100



Lot 2621

2621 C A- A1 **Cape Borda:** 'CAPE BORDA/16NO35/S.A.' (during second TO period). Rated RRRR. TO 15/8/1876; PO 1/4/1877; TO 31/3/1917; closed 31/1/1966. [Kangaroo Island] 200



Lot 2622

2622 C A A1- **Cape Willoughby:** 'CAPE WILLOUGHBY/NO2/35/S-A' squared-circle (during the second TO period) with superb 'PENNESHAW/ 4NO35/S.A.' alongside & blue/white registration label. Rated R, but very rare in the TO period. TO 11/5/1880; PO 1/7/1883; TO 31/3/1917; closed 5/9/1967. **NB:** Telephone Offices had no registration facilities. [Kangaroo Island] 200

HOWARD JOHNSON COVERS (continued)

Lot Type Grading Description

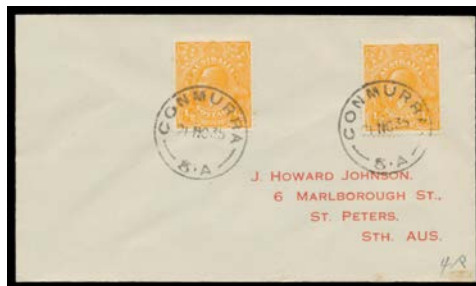
Est \$A

**Lot 2623****2623** C A- B1 **Carpa:** 'CARPA/16NO36/S.A.' Rated RRR. PO -/4/1898; closed 31/3/1971.

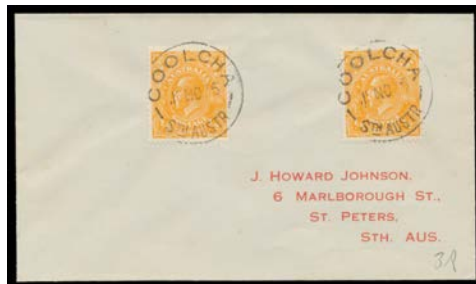
100

**Lot 2624****2624** C A A1 **Chandada (2):** 'CHANDADA/5NO36/STH AUST'. Rated RRR. RO 9/2/1917; PO 16/3/1920; closed 31/3/1971.

100

**Lot 2625****2625** C A A1 **Conmurra:** 'CONMURRA/21NO35/S.A.'. Rated RRRR. PO -/7/1887; TO 1/9/1941; closed 14/1/1948.

150

**Lot 2626****2626** C A A1 **Coolcha:** 'COOLCHA/1NO35/STH AUSTR'. Rated RRR. RO 25/3/1912; PO 1/8/1914; TO 1/2/1952; closed 1/4/1955.

100

**Lot 2627****2627** C A A1 **Copperhouse:** 'COPPERHOUSE/8NO35/S.A.'. Rated RRR. From RO 1/7/1927; closed 1/3/1949. [Copper mining]

100



HOWARD JOHNSON COVERS (continued)

Lot Type Grading Description Est \$A



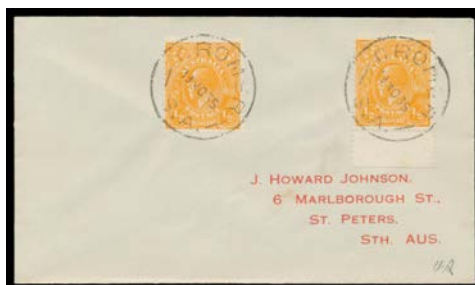
Lot 2628

2628 C A- A1- Cortlinye: 'CORTLINEYE/15NO35/S.A.'. Rated RRR. RO 16/3/1923; PO 1/7/1927; closed 30/11/1953. 100



Lot 2629

2629 C A- A1+ Coward Springs (3): 'COWARD SPRINGS/8NO35//S.A.' (TO period), 'MAREE' h/s on provisional registration label. Rated RRR. PO 7/1/1903; TO 31/10/1918; closed 22/4/1941. [Telephone Offices had no registration facilities] 250



Lot 2630

2630 C A A1- Cromer: 'CROMER/19NO35/S.A.' Rated RRR. RO 4/10/1910; PO 1/7/1927; closed 31/12/1944. 150



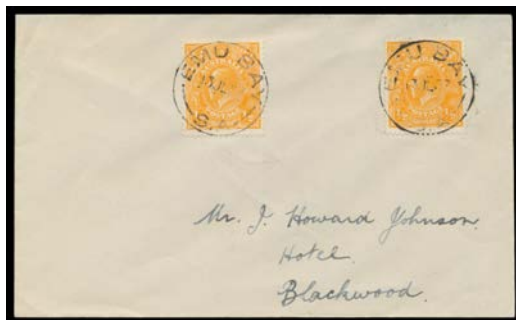
Lot 2631

2631 C A B1- Cunliffe (2): 'CUNLIFFE/18NO35/S.A.' (no arcs). Rated RRR. PO 6/12/1922; RO 13/8/1923; PO 1/7/1927; closed 29/2/1972. 75

HOWARD JOHNSON COVERS (continued)

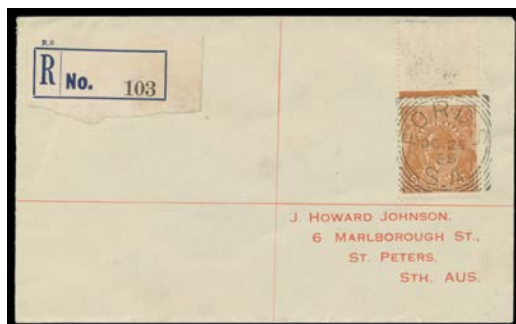
Lot Type Grading Description

Est \$A

**Lot 2632**

2632 C A A1 **Emu Bay:** 'EMU BAY/13JL37/S.A.' (during TO period). Rated RRRR: the only recorded date. RO 7/1/1911; PO 1/7/1927; TO 5/1/1932; closed 30/4/1955. [Kangaroo Island]

200

**Lot 2633**

2633 C A A1 **Fords (2):** squared-circle 'FORDS/OC24/35/S.A.' & mss "FORDS" on blue/black provisional registration label. Rated RRR. PO 6/3/1882; closed 13/12/1968. [A similar cover sold at our auction of 7/7/2007 for \$299]

150

**Lot 2634**

2634 C A B2- **Green's Plains:** 'GREEN'S PLAINS/20MR36/S.A.' - largely very fine b/s - & mss "Green's Plains" on large red/white registration label. Rated RRR. PO 1/11/1869; closed 30/9/1971.

150

**Lot 2635**

2635 C A- A1- **Holder (2):** 'HOLDER/15OC35/S.A.' (ERD) one strike only & superb 'WAIKERIE' transit, DLO cds in red & 'Received in Dead Letter Office,/Adelaide without cover' (amended to "contents"). Rated RRRR. **TO only** 18/10/1935; closed 28/2/1955. [The only example we have seen of the instructional handstamp. None of the *Johnson* covers had enclosures, so perhaps this h/s should be extremely common! It was probably a case of a slow day at the DLO]

200



HOWARD JOHNSON COVERS (continued)

Lot Type Grading Description Est \$A



Lot 2636

2636 C A A1+ Kongal: 'KONGAL/24JA35/S.A.'. Rated RRR. Upgraded from RO 1/7/1927; closed 30/4/1963. 100



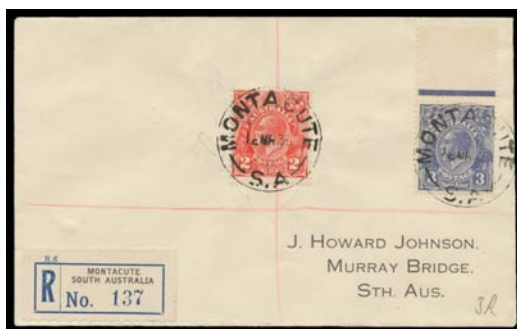
Lot 2637

2637 C A A1- Mambray Creek (3): 'MAMBRAY CREEK/13FE40/SOUTH-AUST.'. Rated RRR. From Mount Gullett 11/9/1939; closed 29/6/1979. 100



Lot 2638

2638 C A A1- Mangalo: 'MANGALO/27FE36/S.A.' & red/white registration label. Rated RR. RO 1/3/1912; PO 1/7/1927; closed 31/12/1974. 100



Lot 2639

2639 C A A1 Montacute: 'MONTACUTE/12MR36/S.A.'. blue & black/white registration label. Rated RRR. 150

HOWARD JOHNSON COVERS (continued)

Lot Type Grading Description

Est \$A

**Lot 2640**

2640 C A A1 **Moockra (2):** 'MOOCKRA/8MR36/S.A.', blue/white registration label. Rated RRR. RO 13/9/1920; PO 1/9/1924; TO 1/8/1955; closed 31/8/1955.

150

**Lot 2641**

2641 C A A2+ **North Cape:** 'NORTH CAPE/4JL37/S.A.'. Rated RRRRR; the only recorded date. TO only 1/10/1924; closed 31/10/1960. [Kangaroo Island]

200

**Lot 2642**

2642 C A A1 **Taragoro:** 'TARAGORO/11JA40/S.A.' (ERD). Rated RRR. TO only 18/10/1929; closed 5/4/1966.

150

**Lot 2643**

2643 C A A1- **Tulkineara (2):** 'TULKINEARA/12JA40/S.A.'. Rated RRR. TO only 13/9/1927; closed 23/11/1944.

150



HOWARD JOHNSON COVERS (continued)

Lot	Type	Grading	Description	Est \$A
-----	------	---------	-------------	---------



Lot 2644

2644	C	A A1-	Wisanger: 'WISANGER/4JL37/S.A' Rated RRR. PO 1/12/1882; RO 16/7/1917; PO 1/7/1927; closed 31/12/1951. [Kangaroo Island]	150
-------------	---	-------	--	-----