



Lot Type Grading Description

**MILITARY POST OFFICES**

See also Auction #197: "Postal History of Australia in World War I"

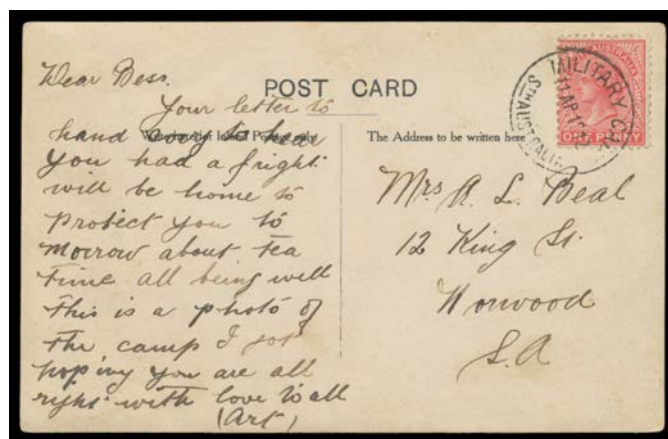


**Lot 2603**

**2603** C A- A1 **Easter Camp Happy Valley:** 'MILITARY CAMP/17AP1911/STH AUSTRALIA' very fine strike on 1d red on *Tourist Bureau* PPC ("Morialta Falls") to Wallaroo. Rated RRRRR. PO Easter-1911. [The writer states "Arrived safe...we had to march from [?] to the top of tapley's hill"]

This is the ERD for the Military Camp cds, which was essentially a "relief" datestamp. It had six separate allocations between Easter 1911 & 4/10/1915.

400



**Lot 2604**

**2604** C B A2+ **Easter Camp Murray Bridge:** 'MILITARY CAMP/11AP1912/STH AUSTRALIA' largely superb strike on *real photo* PPC of the Camp, to Norwood. Rated RRRRR. PO Easter-1912. [The writer states "...will be home to protect you tomorrow about tea time...This is a photo of the camp..."]

400



**Lot 2605**

**2605** C A **Easter Camp Nairne:** 1908 *real photo* PPC "Easter Camp Nairne" (dozens of tents scattered across open paddocks), unused. Presumably pre-dating establishment of temporary post offices & introduction of the 'MILITARY CAMP' cds. [Easter Camps were conducted at Nairne at least in 1903 & 1908]

75

**MILITARY POST OFFICES (continued)**

Lot Type Grading Description

Est \$A

**Lot 2606**

**2606** C A- A1 **Exhibition Military Camp: 'MILITARY CAMP EXHIBITION/31AU15/S.A.'** (ERD; second day of operations) very fine strike on KGV 1d red on *Shierlaw* front illustrated for *Adelaide YMCA*. Rated R but very elusive this fine, & especially on "cover". PO 30/8/1915; closed 26/2/1917.

200

**Lot 2607**

**2607** S A B3- **Military Camp No 2: 'MILITARY CAMP/No 2/17MR15/STH AUSTRALIA'** (LRD) light but obvious strike on KGV 1d red. Rated RRRRRR: recorded for 6 weeks only. Allocation unknown.

Offer

**Lot 2608**

**2608** C B A2- **Mitcham Military Camp: 'MILITARY CAMP MITCHAM/28NO15/STH AUST'** (ERD) largely very fine strike on KGV 1d red on *real photo* PPC captioned "AAMC Base Mitcham 26-11-15", minor faults. PO 1/4/1915; closed 11/12/1918.

75

**MILITARY POST OFFICES (continued)**

Lot	Type	Grading	Description	Est \$A
-----	------	---------	-------------	---------

**Lot 2609**

<b>2609</b>	C	A B2-	<b>Morphettville Military Camp (2):</b> 'MILTY CAMP MORPHETTVILLE/4AP1916/STH AUSTRALIA' largely fine strike on KGV 1d red on OHMS <i>Shierlaw</i> front. Rated RRRR. PO 13/9/1915; closed 12/6/1916. [ <b>NB:</b> the PSSA illustration omits 'MILTY']	250
-------------	---	-------	---	-----