



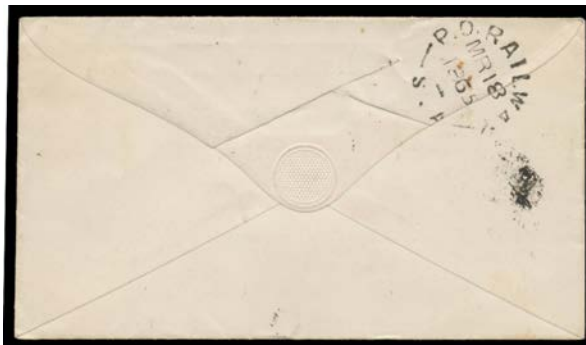
Lot Type Grading Description

TRAVELLING POST OFFICES



Lot 2645

2645 S A A3 **ROAD MAIL:** '[ROAD M]AIL SOUTH/--4/1868/[S-J]' fine strike on Perkins Bacon 2d. Rated RRRR. Mail coach from 23/3/1864; closed c.1870. 100



Lot 2646

2646 C A- A1 **'RAILWAY' DATESTAMPS:** 25mm unframed 'P.O.RAILWAY/MR18/1865/ 1 /S.A.' (#UF3-3; Gang '1' sideways) largely superb b/s on cover to Adelaide, Rouletted 2d (a bit oxidised) & largely fine strike of 20mm unframed 'TRURO/S-A' cds (rated RRR), no arrival b/s. Rated RRRRR: the later & vastly superior of only two recorded strikes, and the only one with Gang '1'. [Unrecorded by Tony Presgrave] 400



Lot 2647

2647 C B A1 - 21mm unframed 'P-O/ 1 /AP21/68/RAILWAY' (#UFM) very fine b/s on cover with Rouletted 2d tied by one of 2 light strikes of 21mm - not 22mm as in PSSA - unframed 'KAPUNDA/S-A' (#UF4b; ERD - rated RRR), 21mm Port Adelaide arrival b/s. Rated RR. 150



Lot 2648

2648 C B A2- - 23mm - not 24mm as in PSSA - framed 'RAILWAY PO/ 1 /21AP/76/S-A' (#F1-1) largely very fine b/s on cover with DLR 2d tied by one of 2 fine strikes of 'YATINA' cds rated R), very fine 25mm unframed 'BURNSIDE/AP21/1876/S . A' arrival b/s (rated RRRR). Rated RRRR. 300

TRAVELLING POST OFFICES (continued)

Lot Type Grading Description

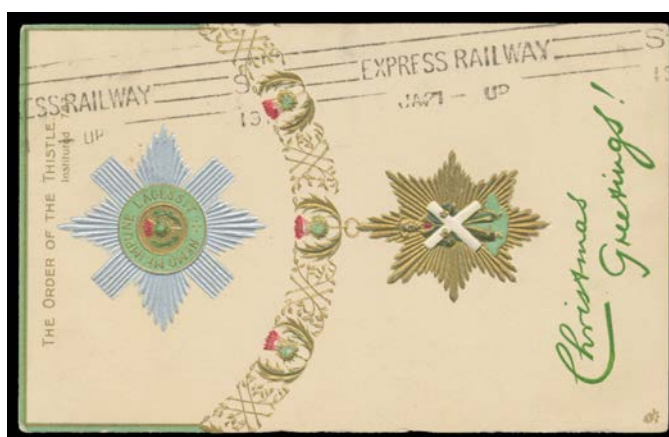
Est \$A



Lot 2649

2649 PS B B1 - 23mm framed 'RAILWAY/ 1 /MA13/84/S-A' (#F1-6; arcs 8mm) two largely fine strikes on 1d violet Postal Card with printed *South Australian Railways* advice, backstamps superb unframed 'WATERVALE/S-A' (rated R), VF 23mm framed 'AUBURN/S-A' (R) & largely fine framed 'PENWORTHAM/S.A' arrival, a little aged. Rated RRR.

100



Lot 2650

2650 C A- A1 **EXPRESS RAILWAY:** 'EXPRESS RAILWAY/JA21 - UP - 1911' machine very fine backstamp on unpaid *Order of the Thistle* Christmas PPC (better late than never!) to Auburn (SA) with 'T'-in-oval h/s & CofA Postage Due 2d manuscript cancelled.

100



Lot 2651

2651 C B A2- **PORT PIRIE RAILWAY:** 'PT PIRIE UP/20NO14/STH AUSTR' (ERD) & 'P.P.RAILWAY UP/10AP18/S.A.' largely very fine strikes on KGV 1d red on *Shierlaw* fronts (minor defects). Both rated RRR. PO -/6/1881; closed 31/7/1927.

200



Lot 2652

2652 C B A1 **QUORN-ALICE SPRINGS TPO:** 'QUORN-ALICE SPRINGS/25DE34/T.P.O.' (Christmas Day) very fine strike on Vic Centenary 2d on cover to Victoria, minor creasing. Rated RRR. From Quorn-Stuart TPO 35/7/1930; to Central Australian Rail TPO 11/3/1957. [A superb strike on 1937 commercial cover sold at our auction of 7/7/2007 for \$834]

250



TRAVELLING POST OFFICES (continued)

Lot Type Grading Description

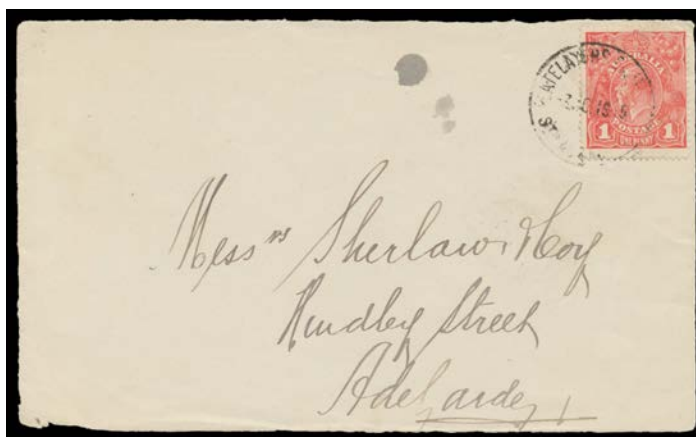
Est \$A



Lot 2653

2653 S A- A3 TRANS-AUSTRALIAN RAILWAY: '[T.]R. HEAD CAMP/AU1/88/[S.A.]' very fine squared-circle on DLR 2d & a light but more complete strike on Perkins Bacon 4d. Rated RRR.

150



Lot 2654

2654 C B C2- - '[PL]ATELAYERS CAM[P E.W.RY]/3OC1915/STH AU[STRALIA]' under-inked but obvious strike on KGV 1d red on Shierlaw front. Rated RRRR. PO 15/3/1915; closed 3/12/1915. PO 1/5/1916; closed 21/8/1917. [A very fine strike on 1/2d pair from the second period - rated RRR - sold at our auction of 20/1/2007 for \$1840]

150



Lot 2655

2655 C C B1 - '477 MILE QUARRY TRANS AUSTN RLY/21OC38/SA' (LRD) two light but largely clear strikes - and a largely very fine b/s - on Cox Bros cover (opened-out & with filing holes), mss "447 miles/TAR" on blue & black/white registration label, a little soiled & minor toning. Rated RRRR.

250