

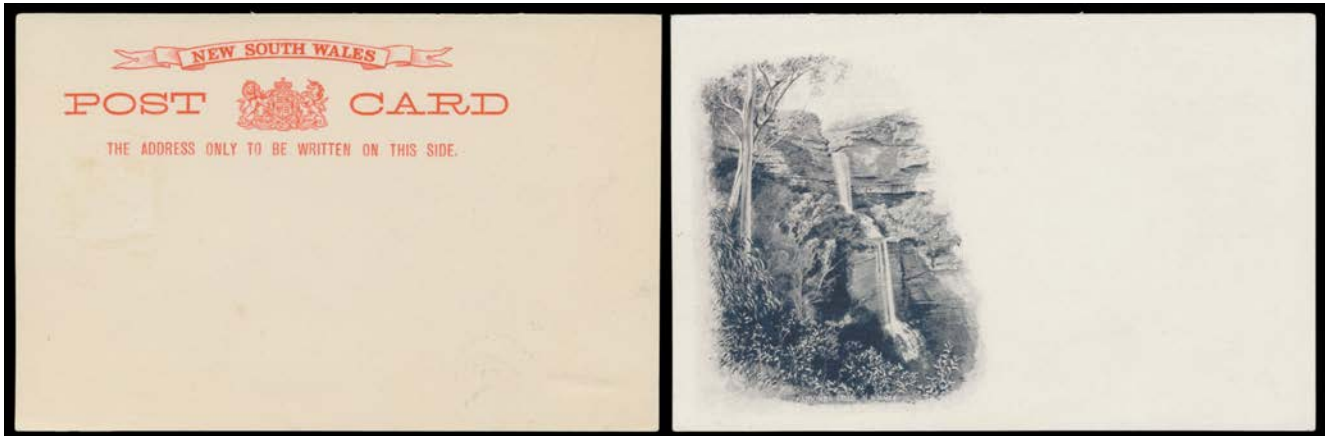
Lot Type Grading Description

Est \$A

COMMONWEALTH OF AUSTRALIA - Kangaroos - First Watermark**Lot 73**

73 E A .5 ½d half-tone proof of a Type 3a essay (with Value Tablet at Upper-Left & "Rabbit Ears") in red on highly surfaced white paper (72x76mm) BW #KE34, Cat \$10,000. *Ex Kevin Nelson & Arthur Gray. Chris Ceremuga Certificate (2012).* The ACSC states that only four examples are recorded, of which two have been significantly reduced from this size.

4,000

NEW SOUTH WALES - Postal History**Lot 416**

416 P A- **POSTAL CARDS:** 1897 Scenic Issue printer's proof on very thin card with printed banner in red but no stamp & "KATOOMBA FALLS, NS WALES" in black on the reverse, a couple of very minor blemishes. *Rare. Ex Dr Ed Druce and John Bell (NSW).*

A group of 29 of these delightful essays came to light only in 1984, comprising six different designs in a range of colours, some with 'Stamp'-within-a-box printed on the address side. They were almost certainly prepared by *William Gullick*, the NSW *Government Printer*. All have minor abrasions on the address side where removed from a reference book.

1,000

VICTORIA**Lot 473**

- 473** E A- **1857-63 Emblems** essays by *William Bell* on a single piece of thin wove paper (70x29mm) with three die proofs in black adapted from the same Head but with two of them on a circular rather than oval field, the first of just the Head with the background too heavily engraved, the others with 'VICTORIA' and 'SIX PENCE' (lower-left corner unfinished) or 'TWO PENCE' (lower-right corner unfinished) & Small Numerals Added, a couple of insignificant blemishes. It's odd that *Bell* produced a 6d value when the tender specified production of 1d 2d & a new 4d denomination only: perhaps they had been prepared earlier in anticipation of new designs being required. Ex *Rodney Perry* and *Ken Barelli*. See "Stamps of Victoria" at page 108.

5,000