

Lot Type Grading Description

Est \$A

MALAYA - Straits Settlements - Postal History**Ex Lot 647**

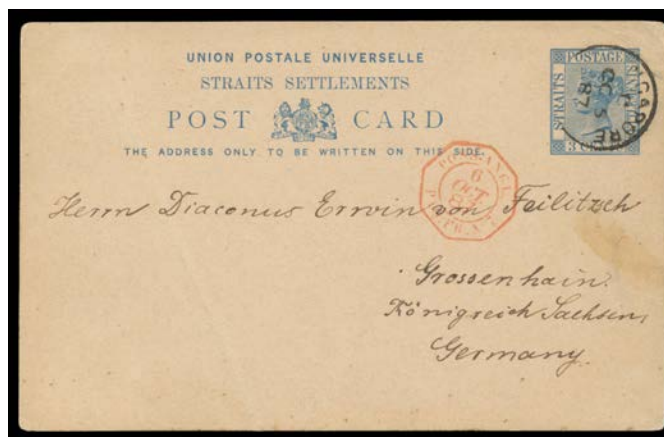
- 647** C Superior group comprising 1858 stampless entire to Mauritius "p City of London"; 1867 stampless entire with 'PENANG/11/DEC/1867/P.O.' cds & French 'POS.ANG.V.SUEZ/P.AN.A.MARS' mailboat cds in red; 1867 badly desiccated cover to Bombay with East India 4a cancelled at Singapore; 1873 double-rate cover to India with 12c x2 & 'SINGAPORE/ A /JA9/73/PAID' cds in red; 1874 outer to "Baden/Germany" endorsed "via Trieste" with 12c tied by a company's cachet in blue & poor 'PENANG - D17' duplex; 1874 cover to Scotland with 30c SG 17 & 24c SG 16 - paying the late fee - both pre-cancelled with *Chartered Mercantile Bank* cachet & tied by Circle-of-Squares "killer" (Proud #K15); 1875 stampless cover 'PENANG' to 'HONG-KONG' (b/s); and 1880 cover to Paris with 8c & three different French mailboat d/s; and eight mostly used PPCs; condition variable. (16)

750

**Lot 652**

- 652** C B 1872 large-part mercantile entire to France "per Mail Steamer/via Brindisi" with three-colour franking of 2c brown, 8c orange & 12c blue tied by two very fine strikes of 'KALTENBACH ENGLER & Co/29/JUN/1872/SINGAPORE' firm's cds in blue, three early large-part strikes of the small bars "killer" (Proud #K17; ERD 17/1/1872), 'SINGAPORE/JU30/72/PAID' cds in red & superb strike of the small 'PD' (= Paid to Destination) handstamp (#PD4; LRD by almost 13 months), largely superb French 'POSS ANG V SUEZ/29/JUIL/72/ALEXANDRIE' transit in red, 'MARSEILLE A LYON/SPECIAL' transit & 'LYON' arrival b/s, ironed-out horizontal filing crease & tiny blemishes hardly detract from the attractiveness of this scarce cover. Ex Arthur White (NY 2006). [Carriage was per P&O "Tanjore" to Galle & "Pekin" to Suez; then from Alexandria by French vessel "Scamandre" to Marseilles, NOT via Brindisi as endorsed]

850

**Lot 655**

- 655** C C 1887 commercial usage of 3c blue Postal Card to Saxony with 22mm 'SINGAPORE/OC5/87' cds & a very fine strike of the rare French mailboat 'POSS.ANGL/6/OCT/87/PAQ FR No7' d/s in red ('N' Omitted; Salles #1934var with sans serif year), creased at left with crude "sticky" tape repair on the reverse, full message in German.

300

MALAYA - Straits Settlements - Postal History (continued)

Lot Type Grading Description

Est \$A

**Ex Lot 662**

- 662** CPS A/B **SHIP-BOARD POSTMARKS:** 1895 'INDO-CHINE' 15c Letter Card (with bold boxed 'F ENGLER & Co/SAIGON' security datestamp in violet) & 1897 *Denis Frères* cover both with 'LIGNE DE SAIGON A SINGAPORE' cds in blue, and 1901 Indo-China PPC with 'PAQ/SAIGON A SINGAPORE' cds in blue, to Germany (the earliest) or France. The first item is *Ex TV Roberts*. (3)

300

NETHERLANDS INDIES**Lot 687**

- 687** C B **1879** cover to France with Indies 25c tied by '8'-in-diamond-of-dots cancel of 'BUITENZORG' (cds below), French octagonal 'POSS NEER/24/AOUT/79/PAQ FR No 1' d/s in blue & 'INDO-CHINE/25/SEPT/79/PAQ FR MODANE' cds in red both on the face, very fine 'PARIS/GRENELLE' arrival b/s, ironed-out vertical fold & small repair at upper-right. *Ex Michael Scott-Archer (2004)*.

500

**Lot 688**

- 688** PS B **1881 & 1891** different style 7½c Postal Cards to Holland or France each with 'N-I AGENT SINGAPORE' cds (apparently the ERD & LRD for this marking), the first also with very fine '89'-in-diamond-of-dots cancel used by the Dutch Postal Agent, the other with octagonal 'LIGNE N/PAQ FR No 7' transit d/s, blemishes. A desirable duo.

500

NETHERLANDS INDIES (continued)

Lot Type Grading Description

Est \$A

**Lot 689**

- | | | | |
|------------|----|----|--|
| 689 | PS | A- | <p>1882 7½c Postal Card to France with Weltevreden cds, superb strike of the rare French 'LIGNE P/3/JUIL/82/PAQ FR No 1' cds on the face, 'LIGNE N/28JUIL/82/PAQ FR No 9' transit b/s & 'MODANE A PARIS/4/AOUT/82' TPO transit cds in red on the face, Paris arrival b/s, minor blemishes. [The French Ligne P was a feeder service between Batavia & Singapore only. <i>Raymond Salles</i> at Vol V page 125 states (translated) "...the small number of pieces known makes it impossible to reconstruct the complete schedules from January 1867 to the end in 1884". In almost every case, <i>Salles</i> illustrates and quotes a price or gives a rating for every marking. For Ligne P, he doesn't even provide an illustration, an obvious indication of great rarity]</p> |
|------------|----|----|--|

1,500