

Lot Type Grading Description

Est \$A

COMMONWEALTH OF AUSTRALIA - Postal History**Lot 387**

- 387** C A **1936** philatelic cover from New York USA to Victoria "Via Zeppelin Von Hindenburg" with Times Square cancels & large Lakehurst Zeppelin cachet in purple at left, Melbourne arrival b/s of 30MY36. Very scarce. [Rodney Perry's commercial cover from the same flight sold at auction for \$5290. It was noted there that the covers were carried from London per *Imperial Airways* "Aurora" which developed engine trouble at Penang. A similar cover sold at our auction on 6/3/2015 for \$1521]

750

**Lot 388**

- 388** CL B **1938** Tait Brothers airmail cover to Germany with rare franking of CofA Wmk 10/- grey & pink (Cat \$1750 on cover) & QM 1d green for the late fee tied by 'SHIP MAIL ROOM/MELBOURNE' cds, Athens transit b/s & Greek Currency Control cachet on the face, minor blemishes. The rate was 1/6d per half-ounce so this item is either overpaid (1/-) or, less likely, underpaid 6d. [NB: there was no airmail cds at the Melbourne GPO until 1939]

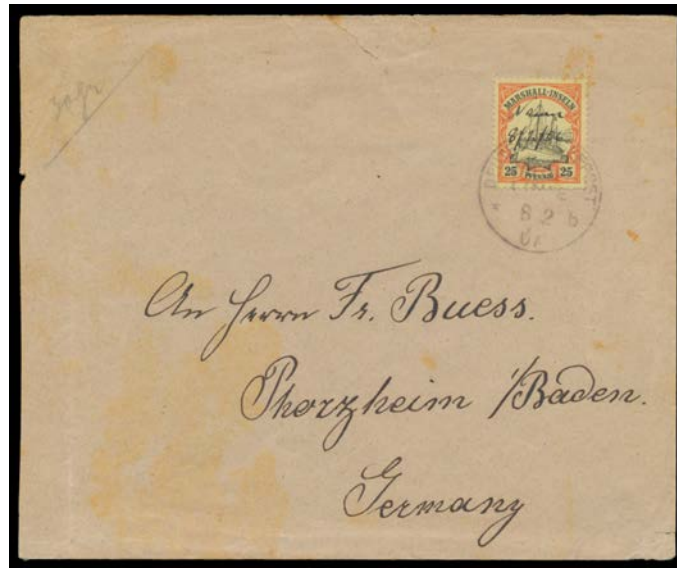
1,500

Lot Type Grading Description

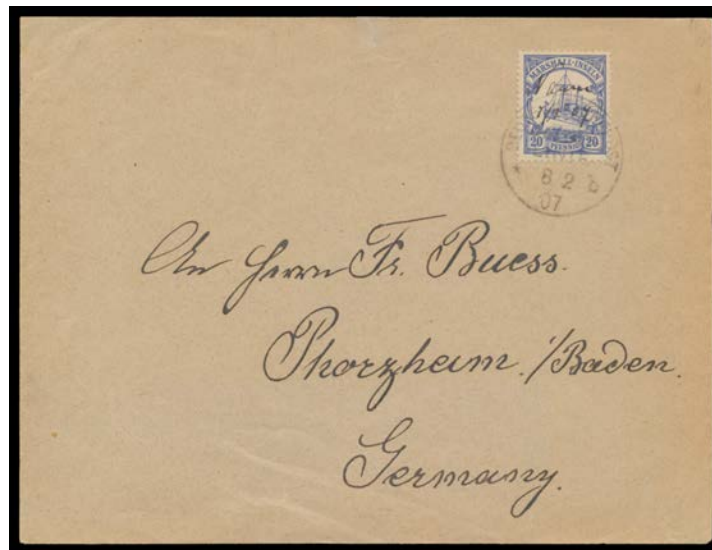
Est \$A

GERMAN COLONIES

611	**	A+	MARSHALL ISLANDS - NAURU: c.1908 (?) embossed 'KAISERL.DEUTSCHE POSTAGENTUR/[eagle]/NAURU/MARSHALL- INSELN' letter-seal, full unmounted o.g. Superb!	100 ^T
-----	----	----	---	------------------

**Lot 612**

612	C	C	- 1907 philatelic cover with Marshalls 30pf & manuscript "Nauru/7 2 07", repaired tear at the top & some staining/toning.	350 ^T
------------	---	---	---	------------------

**Lot 613**

613	C	A-	- another similarly serviced but very fine philatelic cover of the same date with Marshalls 20pf - plausibly paying the double letter rate - a couple of tiny imperfections. <i>Ex John Darnell.</i>	600 ^T
614	C	A-	- 1909 commercial cover (front only) to Austria with 10pf & 20pf tied by two light but clear strikes of the Nauru cds, 'Nauru/(Marshall Ins.)' registration label with the number amended as was common practice.	300 ^T
615	C	A-	- 1909 correctly rated philatelic cover to Germany with 3pf x2 & 25pf tied by light but clear strikes of the Nauru cds, 'Nauru/(Marshall Ins.)' registration label with the number amended, 'PFORZHEIM' arrival b/s, some very minor toning on the reverse only.	250 ^T

GERMAN COLONIES (continued)

Lot Type Grading Description

Est \$A



Lot 616

- 616 PS A- - commercial usage of 10pf Postal Card to England with Nauru cds, message headed "SS *Ocean Queen* moored off Nauru (Pleasant Iland)" states "...ye sea off ye reef is too deep to anchor...wd be of little importce but for...large phosphate workings...sharks are a danger...Natives are rich & labourers have to be brought eg fr China (coolies) & ye Caroline Is kanakas..." Ex *Keith Buckingham & John Darnell*. [Illustrated by *Buckingham* at page 2]

350^T

Lot 617

- 617 C (A-) - 1910 cover with private 'Drucksache' (= printed matter) h/s in blue & solo franking of 3pf tied by fine Nauru cds, to Germany with Sydney transit backstamp & manuscript endorsement on the face "Received in/Ship Room without/contents/GM/7.11.10", ironed-out vertical fold. Ex *John Darnell*.

350^T

Lot 618

- 618 C A - 1910 cover to Nauru with Marshalls 5pf pair tied by two fine strikes of the 'DEUTSCHE SEEPOST/ JALUIT-/LINIE/1.7/10' cds used aboard the "Germania", Jaluit transit b/s of the next day & Nauru arrival b/s of 17.9/[10]. *Friedrich Steuer Certificate* (1995). [The "Germania" was en route to Hong Kong. The cover was offloaded at Jaluit to be put on the next southbound vessel]

350^T

GERMAN COLONIES (continued)

Lot Type Grading Description

Est \$A

**Lot 619**

619	PS	A-	- 1911 commercial usage of 5pf Postal Card to Germany with superb strike of the Nauru cds, the message signed "PH Kayser/Nauru/Marschall-Inseln" (with the archaic 'c' in 'Marschall' crossed-out) requests copies of two books on technical drawing. <i>Ex John Darnell.</i>	400 ^T
620	PS	A-	- 1913 5pf Postal Card with commemorative overprint '2. Oktober/1888***1913/...' on the reverse, locally addressed & CTO, <i>Bothe</i> guarantee handstamp on the reverse. [The overprint was for the 25th Anniversary of the German flag being raised in Nauru]	150 ^T
621	PS	A-	- 1913 5pf Postal Card to Berlin with very fine Nauru cds, message signed "HH Grimme" requests electrical catalogues & asks for a quote for a wholesale order. To whom did he expect to on-sell them!?	250 ^T

MALAYA - Straits Settlements - Postal History**Lot 655**

655	C	C	1887 commercial usage of 3c blue Postal Card to Saxony with 22mm 'SINGAPORE/OC5/87' cds & a very fine strike of the rare French mailboat 'POSS.ANGL/6/OCT/87/PAQ FR No7' d/s in red ('N' Omitted; <i>Salles</i> #1934var with <i>sans serif</i> year), creased at left with crude "sticky" tape repair on the reverse, full message in German.	300
-----	---	---	--	-----

**Lot 658**

658	C	B	1900 PPC of the Singapore (?) "Cricket Club" endorsed "Feld Post" to Germany with Straits 3c brown tied by 'KAIS DEUTSCHE/MARINE-/SCHIFFPOST/ No 70 /7 10/00' cds, 'WINDERSHEIM' arrival cds, minor soiling. The ship was <i>en route</i> to China in response to the <i>Boxer Rebellion</i> .	350
-----	---	---	--	-----

Lot	Type	Grading	Description	Est \$A
-----	------	---------	-------------	---------

NEW GUINEA - German (Deutsch) New Guinea - Postal History

692	L	B	1914 (Jan 20) "Zusammenstellung" (= letter bill) for two Seepost letters ex SS "Prinz Waldemar", with two superb strikes of a small 'Maron/(Deutsch-Neuguinea)' handstamp, a bit aged.	200
-----	---	---	--	-----



Ex Lot 693

693	CPS		INWARDS MAIL: Mail from Germany comprising four 1904-06 PPCs (one with Bavarian 5pf, another with Seepost cds & 'PENANG TO SINGAPORE' mail sorter cds), 1907 2pf+3pf Postal Card with full message and 1907 & 1908 covers (the first to <i>Karl Viewig</i> with lengthy letter & background info from the internet) all with 'HERBERTSHOHE' arrival cds, also 1906 10pf 'Kartenbrief' with 'MAX WARMING/HAMBURG' label & superb 'STEPHANSORT' arrival cds & June 1914 mercantile postcard to Herbertshohe with Sydney DLO endorsements & 'PASSED BY CENSOR/25JE15/=C.S.= ' cds in violet (faults), generally good to very fine. (10 items)	400
-----	-----	--	---	-----

694	CPS		- 1905 (stamp missing) & 1910 PPCs from Japan, 1908 uprated 5h Postal Card from Moravia (Austria) with full message, a very fine 1919 cover from Switzerland, and a very spotty 1909 uprated KEVII 1d Envelope from New Zealand. (5)	200
-----	-----	--	--	-----



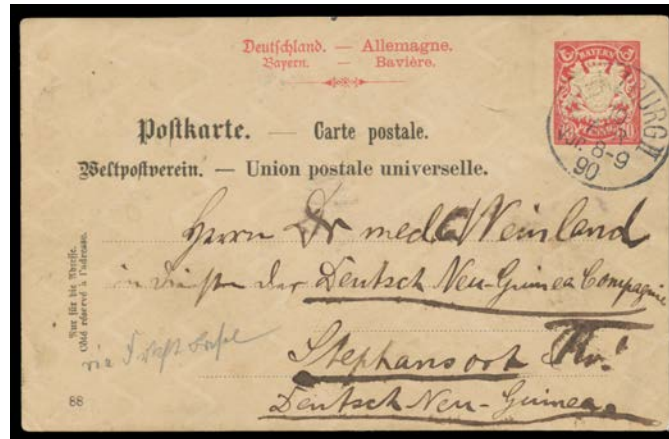
Lot 695

695	C	A	- 1889 cover from Wurttemberg to "Finschhafen/Kaiser Wilhelmsland/Neu Guinea" with 10pf pair tied by 'URACH' cds, Genoa & Soerabaja transit b/s, surprisingly fine for such an early inwards item. <i>Ex Fred Pearson</i> : sold for \$2128 at the <i>Prestige</i> auction of 5/12/2003. [The first postal agency in German New Guinea opened at Finschhafen in 1888, and closed in 1892. This is one of the earliest inwards items to New Guinea that we have seen. The addressee, <i>Dr Carl Weinland</i> was Medical Officer with the <i>Neu-Guinea Compagnie</i> . Was he the same person as "Dr Wendland", referred to several times in "Governor in New Guinea" by <i>Albert Hahl</i> (1937, English translation by <i>Sack & Clark</i> 1980)?]	2,000
-----	---	---	---	-------

NEW GUINEA - German (Deutsch) New Guinea - Postal History (continued)

Lot Type Grading Description

Est \$A



Lot 696

696	C	B	- 1890 (Apr 10) commercial usage of Bavarian 10pf Postal Card to <i>Dr Carl Weinland</i> at <i>Stephansort</i> , no arrival cds (as was the normal practice before 1895), minor blemishes. Rare usage to <i>Stephansort</i> before the <i>Neu-Guinea Compagnie</i> headquarters were relocated there early in 1892. [<i>Dr Weinland</i> arrived in May 1889. he died of malaria at <i>Finschhafen</i> in March 1891]	350
697	CL	B	- 1897 triple-rate commercial cover endorsed "p Lark" from NSW to the <i>Landes Hauptmann</i> (= army captain) at <i>Friedrich-Wilhelmshafen</i> with 2½d & 5d tied by Sydney duplex, central fold & a little truncated at left, some soiling.	350



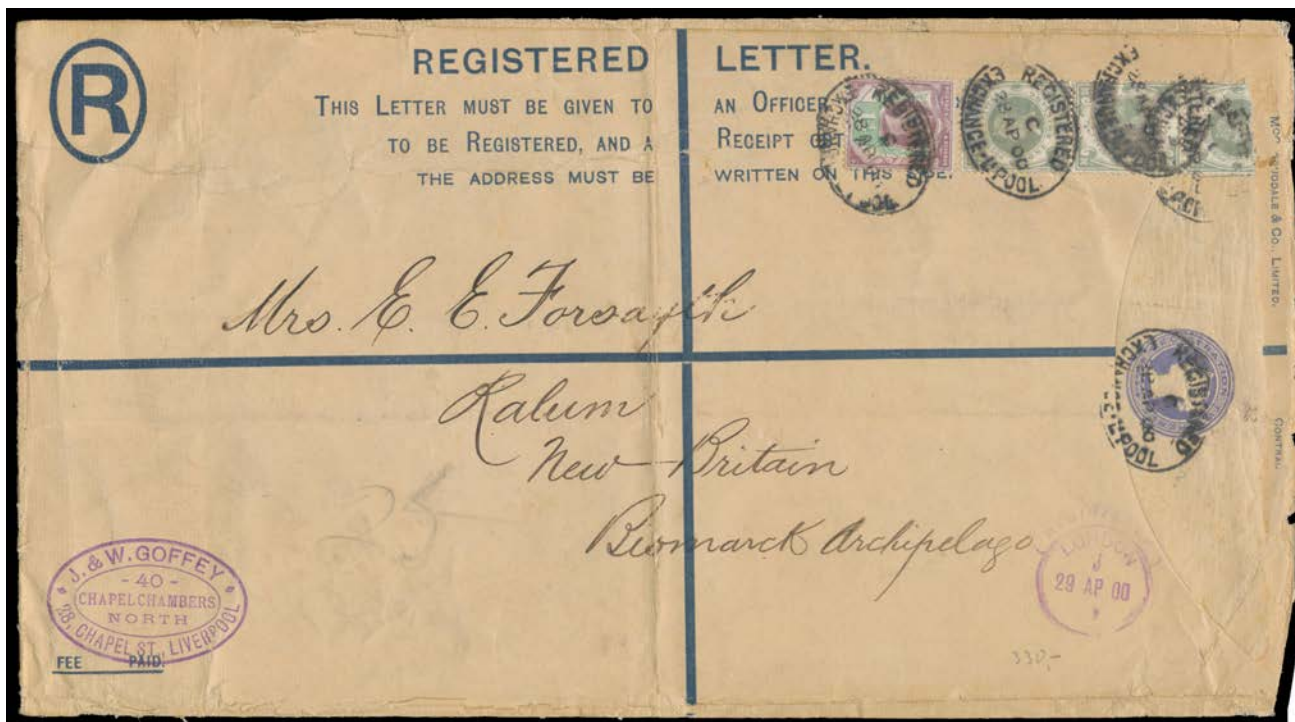
Lot 698

698	PS	(B)	- 1900 commercial usage of Hong Kong '4 CENTS' on 3c Postal Card (reply half) to the ship's doctor aboard SMS "Möwe" c/- the <i>German Consulate</i> at <i>Matupi</i> with superb 'AMOY/ A /FE20/00' cds & Hong Kong transit cds, apparently missent to Sydney where endorsed in red "Matupi/New Britain", full message headed "Amoy ab SMS Irene 12 II 00", some soiling & repaired tear at right. An excellent origin/destination item. <i>Ex Murray Collins</i> : sold for \$935 at the <i>Macray Watson</i> auction of 31/3/1998.	1,000
-----	----	-----	---	-------

NEW GUINEA - German (Deutsch) New Guinea - Postal History (continued)

Lot Type Grading Description

Est \$A



Lot 699

- 699 PS C - 1900 usage of British 2d Size K Registration Envelope with superb 'J & W GOFFEY' (shipping company) cachet at lower-left and rare franking of Jubilees 1½d & 1/- green vertical strip of 3 (one badly damaged) tied by oval 'REGISTERED/EXCHANGE-LPOOL' d/s, to "Ralum/New Britain/Bismarck Archipelago", flap fault & central fold. [The rate was 2½d per ½oz x15 = 3/1½d + 2d registration. The addressee was *Emma Forsayth*, known colloquially as *Queen Emma*. Born in Samoa & a descendant of *King Malietoa*, she & her blackbirder husband traded around New Guinea from 1878. She moved to the Gazelle Peninsula in 1881 where she established large coconut & cocoa plantations, including at Ralum on Blanche Bay, near Rabaul]

500



Lot 700

- 700 C A - 1890 commercial cover to *Dr Carl Weinland* at Stephansort with 10pf pair tied by very fine 'MORSUM' cds, fine 'FINSCHHAFEN' backstamp.

500



Lot 701

- 701 PS B - 1902 usage of New Zealand ½d Wrapper to a missionary at "Ulu/New Launberg/New Britain/South Sea Islands", minor blemishes. [Acquired for \$381 at the *Prestige* auction of 23/6/2001]

300

NEW GUINEA - German (Deutsch) New Guinea - Postal History (continued)

Lot Type Grading Description

Est \$A

**Lot 702**

702	PS	(B)	- 1905 commercial usage of uprated Imperial Russian 3k Postal Card to a missionary's wife at "Sattelberg/by Finschhafen", Cyrillic St Petersburg cds, Cyrillic endorsements but the lengthy letter (tiny script) in German, repaired 12mm tear at right. A remarkable origin/destination item. [Sattelberg (= Saddle Mountain) is a village at an elevation of 900 metres on the Huon Peninsula. A Lutheran Mission was founded there in 1892]	350
703	PS	A-	- 1906 commercial usage of very scarce NSW 1d Postal Card with Four-Line Heading HG 28a ("MOSSMAN'S BAY...") from Sydney with message in German & '[HE]RBERTSHOHE' arrival cds.	250