

Lot	Type	Grading	Description	Est \$A
-----	------	---------	-------------	---------

### COINS & BANKNOTES - AUSTRALIA - Pre-Decimal Coins

6	\$	B	INTERNMENT CAMPS: 1915 copper 1d, gVF.	100 <sup>T</sup>
---	----	---	--	------------------

### CINDERELLAS

61	**	B	AUSTRALIA: World War I two different <i>Liberty Loan</i> labels with Soldier & Flag (one unit thinned) or Sailor & Flag both with 'Govt Printer AJ Mullett' imprint at the base of each unit, upper-left corner blocks of 9, some wrinkling/creasing but most units with full unmounted o.g. Scarce multiples. (2 blocks)	200
----	----	---	---	-----



Lot 62

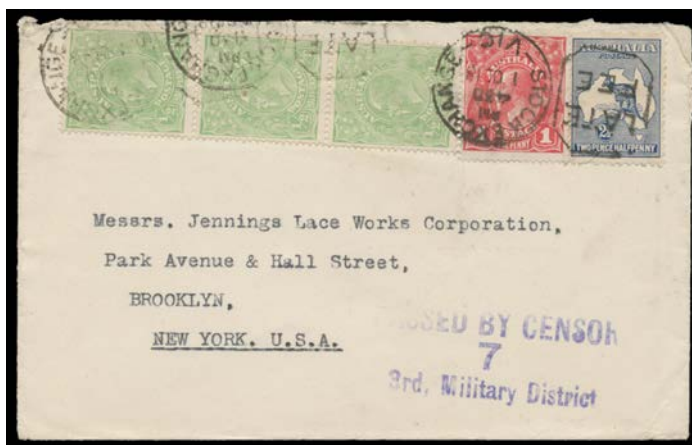
62	?	B	- 1915 photographic 1d 'SOUVENIR/WAR STAMP' based on the KGV 1d, four different of young women affixed to a single piece (175x125mm) with their (?) initials below, faults but the "stamps" are sound.	250
----	---	---	--	-----

### COMMONWEALTH OF AUSTRALIA - Postal History



Lot 379

379	C	A	1915 (Mar 30) PPC to the Red Cross in Switzerland with ½d Roo & KGV 1d red x2 tied by scarce Warwick (Qld) machine cancel, 'PASSED CENSOR/30MR15/BRISBANE' cds in red, two strikes of a very small & very rare 'UNDELIVERABLE.' h/s (26x2mm) in rosiné & another strike of the Censor cds of 15AP15 also in rosiné. Unusual.	300 <sup>T</sup>
-----	---	---	--	------------------

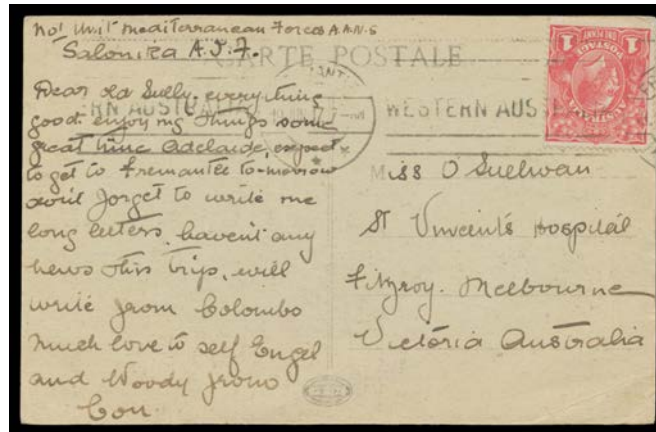


Ex Lot 380

380	C	A/B	1917-25 commercial covers 1) 1917 to Switzerland with 2d Roo & ½d KGV; 2) 1918 to New York with 2½d Roo plus KGV ½d x3 & 1d tied by 'LATE/FEE - STOCK EXCHANGE/VIC' duplex; 3) 1917 to Switzerland with KGV 1d red single & block of 4, 'PINAROO/SA' squared-circles; 4) 1924 to Germany with 6d brown Roo, Horsham (Vic) cds & red/white registration label; & 5) 1925 to New Zealand with 6d brown Roo & KGV 1d green, Tanunda (SA) cds & red/white registration label. (5)	500 <sup>T</sup>
-----	---	-----	---	------------------

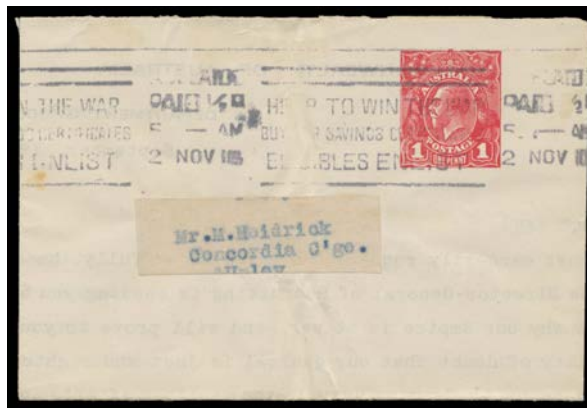
Lot Type Grading Description

Est \$A

**COMMONWEALTH OF AUSTRALIA - Military & Censor Mail**

Lot 394

394	C	A-	<b>WORLD WAR I:</b> 1917 PPC of SS "Mooltan" to Melbourne with KGV 1d red tied by Fremantle machine cancel of 19JUN17, message headed "No 1 Unit Mediterranean Forces AANS/Salonika AIF" & written at sea by a nurse <i>en route</i> to Greece. The only such item we have seen. <i>Ex Tony Finlayson</i> : acquired at the <i>Prestige</i> auction of 14/11/2014 for \$506. [The British had requested Australia to send nurses to Salonika. The "Mooltan" departed Melbourne in June with 462 nurses aboard. The writer states "...some great time Adelaide, expect to get to Fremantle tomorrow...will write from Colombo..."]	450 <sup>T</sup>
-----	---	----	---	------------------

**COMMONWEALTH OF AUSTRALIA - Postal Stationery**

Lot 403

403	PS	B	<b>LETTER SHEETS - STO:</b> 1918 (Sep) 1d red Die 1 with '1' under the flap BW #LSS5 uprated for the war tax with Adelaide 'PAID 1/2D' slogan cancel of 2NOV18, remarkably with the address label intact, central vertical wrinkling, Cat \$2000. [The roneo'd letter dated 'September 1918' urges the addressee to read a pamphlet being sent separately & states "[it] will prove to you...that our quarrel is just and righteous...We were driven to take up arms by [Germany's] malignant aggression...our very life depended on checking her lust for world dominion...Australia's quarrel was, and is, the quarrel of Britain and the Empire..." and finally "...if you are convinced...submit your name for the voluntary Recruiting Ballot...". Nine days later the Armistice was signed]	750
-----	----	---	---	-----

**NAURU - Postal History**

678	C	B	<b>1917</b> correctly rated cover to Utah with Overprints 1/2d & 2d tied by light Pleasant Island cds of 23AU/17, superb strike of the 55mm 'CENSORED.' h/s in violet (the earliest recorded usage), minor blemishes.	150 <sup>T</sup>
-----	---	---	---	------------------

**NEW GUINEA - 'N.W./PACIFIC/ISLANDS' Overprints**

Ex Lot 704

704	G/F	A/A-	Very fine selection comprising 1915-16 4d with Nauru cds, Second Wmk 1/- block of 4 & a superb 5/-, Third Wmk £1, Fifth Setting 2/- shades x2 & 5/-, and New Colours 2d both & 4d both, Cat £1000+. (14)	600
705	*	A/B	Hagner of <i>abc strips</i> with KGV 1/2d to 5d and Kangaroos 2d x3, 2 1/2d, 3d x2, 9d x2 & 1/- x2, various watermarks, a few minor blemishes but generally very fine. (14 strips)	600

**NEW GUINEA - 'N.W./PACIFIC/ISLANDS' Overprints (continued)**

Lot	Type	Grading	Description	Est \$A
706	**	A/B	1915-16 KGV ½d bright green SG 65a <i>Electro 2</i> complete forme of 30 [R31/60] with <i>Frame Break above Right-Hand Wattles</i> [56] & unlisted <i>Phlegm Variety</i> [53] but before appearance of the <i>Plate Cracks</i> on [35] & [47], one unit thinned & some minor adhesion from pink interleaving, most units unmounted.	200

**Lot 707**

707	F	A C1	- 4d chrome-yellow SG 70b <i>type c</i> , unusually with 'PO PLEASANT ISLAND/AU23/16/(NAURU)' cds, Cat £275+. Underappreciated; most examples offered are colour changelings.	250
-----	---	------	---	-----

**Lot 708**

708	**	A	1915-16 <b>Kangaroos</b> First Watermark 2½d indigo SG 74 upper-right corner block of 24 (6x4) with <b>Sheet Margins at Top and Right</b> , the descending rows with the <i>Overprint Progressively Misplaced to the Top</i> , unmounted. [Marginal stamps are rare. They are derived from formes of 30 from the first shipment, from which the 2½d and the KGV 1d were the only NWPI stamps issued with sheet margins. The "Five Settings" irregular block of 20 with sheet margin for 3 rows at left only - minor hinge remainders - sold at the <i>Prestige</i> auction of 7/2/2014 for \$920]	1,000
709	**	A/B	- Second Watermark 9d violet SG 89 Plate 1 block of 18 (6x3) [L13/30] - <i>types bcc</i> - generally well centred, a few short perfs at the base, very minor pink stain on the gum from interleaving, unmounted, Cat £288++ (mounted).	200

NEW GUINEA - 'N.W./PACIFIC/ISLANDS' Overprints (continued)

Lot Type Grading Description

Est \$A



Lot 710

710 \*\* A - Second Watermark 9d violet SG 89 Plate 2 block of 18 (6x3) [L43/60] - types bcc - with Broken Inner-Frame at Lower-Right BW #25(2)n [53] (Cat \$900 mounted), generally well centred, unmounted, Cat £288++ (mounted). Ex David Banwell: with his extensive plating notes. [The "Five Settings" Collection had no 9d Plate 2 formes]

400



Lot 711

711 \*\*/A/B - Third Watermark 3d olive SG 96 Plate 1 block of 20 [L37-41/55-59] with all fifteen Die II units SG 96a - including six Die I-II Pairs SG 96ab - the abc strips being Dies I/II/II, Dies II/II/II, Dies I/II/II, I/II/I and I/II/I, and with the listed Die II Varieties Lone Yachtsman SW of Cape Leeuwin [55] & Colour Flaw West of Arnhem Land [59] (being BW #13(1)d & e, Cat \$600 each), a few tonespots, most units are unmounted, Cat £2275++. A key NWPI rarity. [Absent from Rybak & Banwell. Gribble & Williams had part-formes only]

1,500

712 \*\* A/B - Third Watermark 3d olive SG 96 Fourth Setting complete forme of 30 from the upper-left pane of Plate 2 [L1-30] with White Scratch over Last 'A' of 'AUSTRALIA' [25], Hollow Stops [6, 12 & 18], a few tonespots, unmounted, Cat £165++.

300

**NEW GUINEA - 'N.W./PACIFIC/ISLANDS' Overprints (continued)**

Lot Type Grading Description

Est \$A



Lot 713

**713** \*\* A B1 - Third Watermark £1 chocolate & brown SG 99 type b, well centred, unmounted, Cat £300+ (mounted). Superb!

500



Lot 714

<b>714</b>	F	A	<b>1918 Surcharges</b> 'One Penny' on KGV 5d (type a) & on Kangaroo 1/- (type b) SG 100 & 101 complete horizontal strips of 6, tied to pieces by 'RABAUL/31MY18' cds, Cat £1080++. Rare multiples.	1,000
715	F	A C1	- 'One Penny' on Kangaroo 1/- SG 101 abc strip, 'NAMATANAI/QUEENSLAND' cds (deteriorating makeready) in violet, Cat £320+.	250
716	**	A	<b>1918-23 Fifth Setting</b> Large Multiple Watermark ½d emerald SG 119 Electro 7 complete forme of 30 from the base of the left-hand pane [L31-60], unmounted, Cat £135++ (mounted).	175
717	**	A	- 1d red SG 103 complete forme of 30 from the upper-right of Plate 2 [IV/1-30] with <i>Defective Left Leg on 'N'</i> of 'N.W.P.I.' [14], unmounted, Cat £112++ (mounted).	150

**NEW GUINEA - 'N.W./PACIFIC/ISLANDS' Overprints (continued)**

Lot Type Grading Description

Est \$A



**Lot 718**

**718** \*\* A - 3d olive SG 109 Plate 1 block of 20 [L37-41/55-59] with all fifteen *Die II* units SG 109a - including **six *Die I-II* Pairs** SG 109ab - and with the listed ***Die II Varieties Lone Yachtsman SW of Cape Leeuwin*** [55] & ***Colour Flaw West of Arnhem Land*** [59, obscured by the overprint] (being BW #13(1)d & e, Cat \$600+ each mounted), a single tonespot affects one *Die I-II* pair, unmounted, Cat £3380++ (mounted). A key NWPI rarity, absent from the *"Five Settings" Collection*.

3,000



**Ex Lot 719**

**719** O A/B **PERFORATED 'OS'**: Kangaroos 2d 1/- & 2/- and KGV 1d carmine block of 4, 1d rosine, 1d violet, 2d orange, 4d violet rejoined pair, 4d pale ultramarine & 5d ('[BITA-JPAKA' cds), a few minor defects, Cat £1500 approximately. A very scarce group. (14)

750

**NEW GUINEA - 'N.W./PACIFIC/ISLANDS' Overprints (continued)**

Lot Type Grading Description

Est \$A

**Ex Lot 720****720** SD

**POSTMARKS:** Postmarks arranged as per *Powell* including straight-line 'Herbetshoh' & 'Station Kieta' (stamp defective), double-circle 'POST OFFICE/PO KOKOPO' on commercial piece with rare red & black/white registration label, distorted 'DISTRICT OFFICE/[EITAPE]', the rare 'EIT[APE]/NEW GUINEA', 'POST OFFICE/\*EITAPE \*', 'MOROBE' on Papua 2½d, 'MOROBE' on 5/- on piece with German-type registration label, 'BITA-PAKA' on perf 'OS' 1d, '[W]ITU', 'BUKA PASSAGE' in violet, 'MARIENBERG', etc, poor strikes of 'MARON', 'TALASEA', 'POST OFFICE/TALASEA' & 'GASMATTA', etc, also oval 'CENSORED BY/DISTRICT OFFICER/WMB OGILVY' on commercial registered piece, oval Radio Station types including from Kaewieng, Eitape, Madang, Manus & Rabaul, etc, condition of stamps & strikes is variable. A very useful lot. **(63 items)**

1,250

**RUSSIA****Lot 766****766** \*

A/A-

**WESTERN UKRAINE:** 1918 (Dec 12) Kolomyia Surcharges on Austria '5' (sotyk) on 15h to '10' (sotyk) on 12h *Scott* #5-8, a few minor blemishes, large-part o.g., Cat \$US3500 (2012).

750