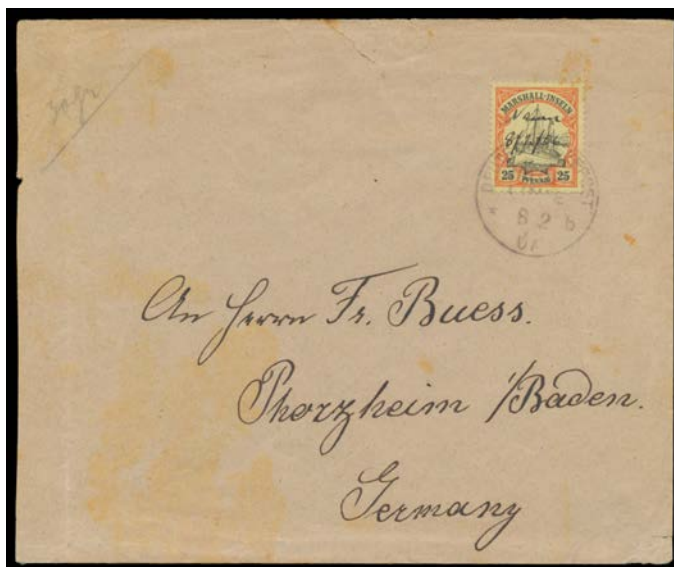


Lot Type Grading Description

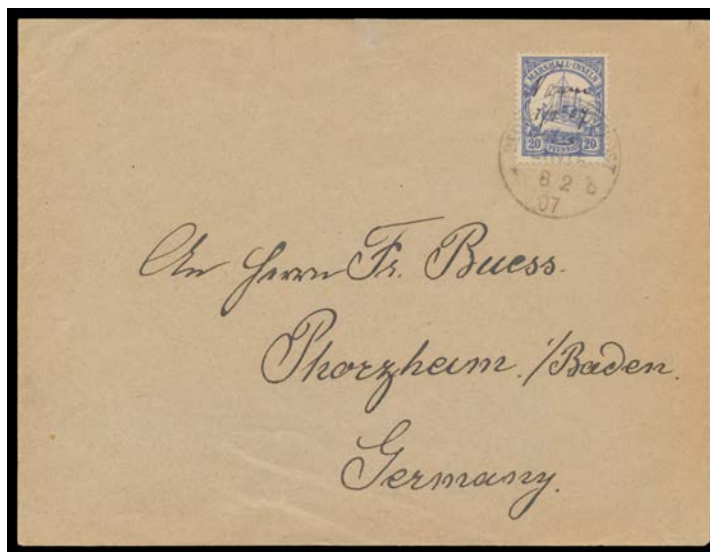
Est \$A

**GERMAN COLONIES**

611	**	A+	MARSHALL ISLANDS - NAURU: c.1908 (?) embossed 'KAISERL.DEUTSCHE POSTAGENTUR/[eagle]/NAURU/MARSHALL- INSELN' letter-seal, full unmounted o.g. Superb!	100 <sup>T</sup>
-----	----	----	--	------------------

**Lot 612**

612	C	C	- 1907 philatelic cover with Marshalls 30pf & manuscript "Nauru/7 2 07", repaired tear at the top & some staining/toning.	350 <sup>T</sup>
-----	---	---	---	------------------

**Lot 613**

613	C	A-	- another similarly serviced but very fine philatelic cover of the same date with Marshalls 20pf - plausibly paying the double letter rate - a couple of tiny imperfections. <i>Ex John Darnell.</i>	600 <sup>T</sup>
614	C	A-	- 1909 commercial cover (front only) to Austria with 10pf & 20pf tied by two light but clear strikes of the Nauru cds, 'Nauru/(Marshall Ins.)' registration label with the number amended as was common practice.	300 <sup>T</sup>
615	C	A-	- 1909 correctly rated philatelic cover to Germany with 3pf x2 & 25pf tied by light but clear strikes of the Nauru cds, 'Nauru/(Marshall Ins.)' registration label with the number amended, 'PFORZHEIM' arrival b/s, some very minor toning on the reverse only.	250 <sup>T</sup>

## GERMAN COLONIES (continued)

Lot Type Grading Description

Est \$A



Lot 616

- 616** PS A- - commercial usage of 10pf Postal Card to England with Nauru cds, message headed "SS *Ocean Queen* moored off Nauru (Pleasant Iland)" states "...ye sea off ye reef is too deep to anchor...wd be of little importce but for...large phosphate workings...sharks are a danger...Natives are rich & labourers have to be brought eg fr China (coolies) & ye Caroline Is kanakas..." Ex Keith Buckingham & John Darnell. [Illustrated by Buckingham at page 2]

350<sup>T</sup>

Lot 617

- 617** C (A-) - 1910 cover with private 'Drucksache' (= printed matter) h/s in blue & solo franking of 3pf tied by fine Nauru cds, to Germany with Sydney transit backstamp & manuscript endorsement on the face "Received in/Ship Room without/contents/GM/7.11.10", ironed-out vertical fold. Ex John Darnell.

350<sup>T</sup>

Lot 618

- 618** C A - 1910 cover to Nauru with Marshalls 5pf pair tied by two fine strikes of the 'DEUTSCHE SEEPOST/ JALUIT-/LINIE/1.7/10' cds used aboard the "Germania", Jaluit transit b/s of the next day & Nauru arrival b/s of 17.9/[10]. Friedrich Steuer Certificate (1995). [The "Germania" was en route to Hong Kong. The cover was offloaded at Jaluit to be put on the next southbound vessel]

350<sup>T</sup>

**GERMAN COLONIES (continued)**

Lot Type Grading Description

Est \$A

**Lot 619**

619	PS	A-	- 1911 commercial usage of 5pf Postal Card to Germany with superb strike of the Nauru cds, the message signed "PH Kayser/Nauru/Marschall-Inseln" (with the archaic 'c' in 'Marschall' crossed-out) requests copies of two books on technical drawing. <i>Ex John Darnell.</i>	400 <sup>T</sup>
620	PS	A-	- 1913 5pf Postal Card with commemorative overprint '2. Oktober/1888***1913/...' on the reverse, locally addressed & CTO, <i>Bothe</i> guarantee handstamp on the reverse. [The overprint was for the 25th Anniversary of the German flag being raised in Nauru]	150 <sup>T</sup>
621	PS	A-	- 1913 5pf Postal Card to Berlin with very fine Nauru cds, message signed "HH Grimme" requests electrical catalogues & asks for a quote for a wholesale order. To whom did he expect to on-sell them!?	250 <sup>T</sup>

**NAURU****Ex Lot 665**

665	G/F	A	<b>1915-16 NWPI Overprints</b> simplified Kangaroos 2d to £1 (ex 2½d) plus KGV 1d 4d & 5d all with 'CANCELLED/NAURU' telegraph cancels. A very scarce "set". [See also Lot 707] (12)	500
-----	-----	---	--	-----

**Lot 666**

666	F	A B1	- Kangaroos Third Wmk £1 brown & blue SG 99 type a, very fine 'PO PLEASANT ISLAND/JA18/17/(NAURU)' cds, Cat £450+. A very rare usage in Nauru. [NB: the <i>Madame Joseph</i> forgery of the cds is dated NO2/21]	400
-----	---	------	--	-----

**Ex Lot 667**

667	**	A B1	<b>1916-23 Overprints on Great Britain KGV Heads</b> ½d to 1/- SG 1-12 - ex 2d <i>Die II</i> - each with 'N/P/IMPRIMATUR' handstamp <i>Reading Upwards or Downwards</i> on the reverse, unmounted. [In 1983-84, Britain's <i>National Postal Museum</i> released 10 sets - plus some odd values - at public auction: see <i>Buckingham</i> pp16-21. <i>Barry Gribble's</i> set sold for \$977] (11)	600 <sup>T</sup>
-----	----	------	---	------------------

## NAURU (continued)

Lot Type Grading Description

Est \$A



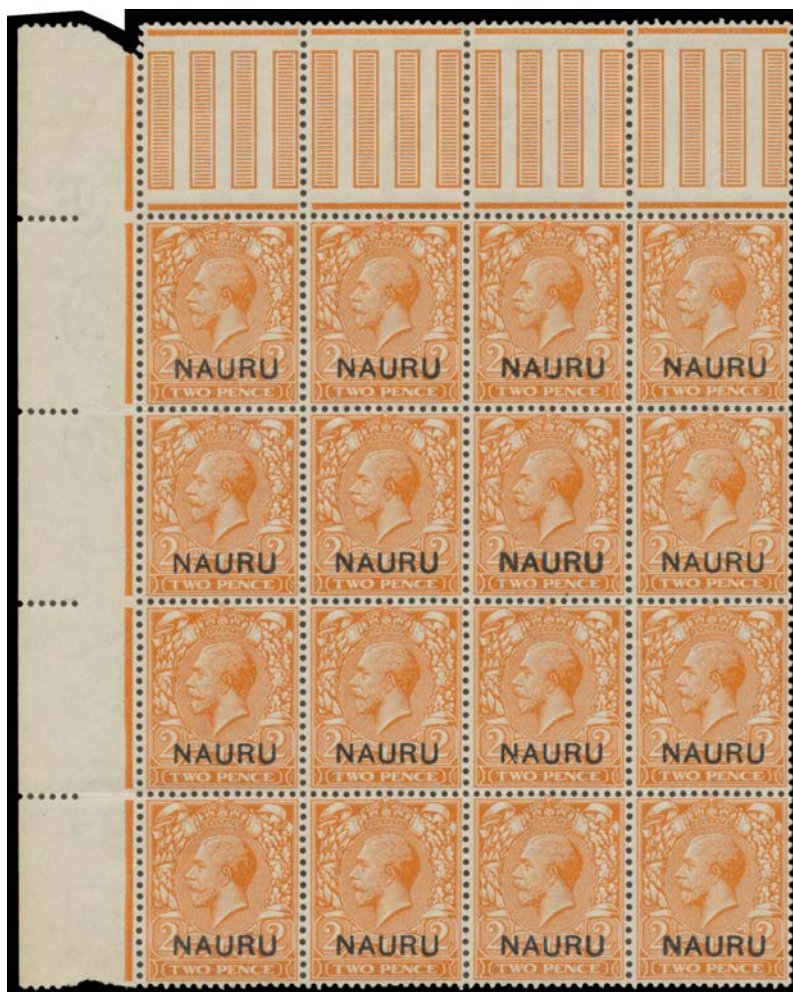
Ex Lot 668

668	*	A/A-	- ½d to 1/- complete (ex 2d Die II) all with Short 'N' in 'NAURU', the 2d in a pair with normal stamp, a couple of minor imperfections, Cat £700+. A difficult "set" to assemble. (11 items)	300 <sup>T</sup>
-----	---	------	--	------------------



Ex Lot 669

669	V/F	A/A-	- ½d 1d 2d Die I 3d 4d 6d (the colour a little diffused) 9d & 1/- all with Short 'N' in 'NAURU', each with Nauru cds, Cat £460 mint; unpriced used. A rare group. [Busckingham states at page 52 "...after 45 years, the author still has not completed a fine used set"] (9)	250 <sup>T</sup>
670	**	A C1	- 2d orange Die I with the Watermark Inverted & Reversed SG4y, unmounted, Cat £120+ (for mounted).	100 <sup>T</sup>



Lot 671

671	**	A/A+	- 2d orange Die I with the Watermark Inverted & Reversed SG4y upper-left corner block of 16 (4x4) from the upper-left of the lower pane, most units are well centred & many are superb, unmounted, Cat £1920+ (for mounted singles). A rare multiple, probably one of the largest blocks extant. Ex John Darnell.	1,800 <sup>T</sup>
672	**	A B1	- 2d orange Die II marginal block of 4 from the top of the sheet, the second unit with Damage to N A R & U, unmounted, Cat £280++ as mounted singles.	150 <sup>T</sup>
673	F	A C1	- 2d orange Die II tied by light but obvious strike of the scarce 'PO NAURU/--JL24/(PLEASANT ISLAND)' cds - recorded used 13DE21 to 1JA25 only - to Wilson cover to England, Cat £100 x10+. A rare albeit philatelic franking.	150 <sup>T</sup>

**NAURU (continued)**

Lot	Type	Grading	Description	Est \$A
-----	------	---------	-------------	---------

**Ex Lot 674**

<b>674</b>	*	A/A-	- 2½d 4d 5d (hinge remainder) & 9d (minor bend) each with <i>Double Overprint One Albino</i> SG 6b 8b 9b & 11a, Cat £980. (4)	400 <sup>T</sup>
------------	---	------	---	------------------

**Lot 675**

<b>675</b>	*	A B1	<b>1916-23 Overprints on Great Britain Seahorses</b> <i>Waterlow</i> Printings 10/- indigo with 'SPECIMEN' <i>Overprint Double (One Albino)</i> SG 18sa, lightly mounted, Cat £2500. A very rare stamp of which only 3 examples have been recorded. <i>David Brandon</i> (1984) & <i>RPSofL</i> (2006) <i>Certificates</i> . Ex <i>John Darnell</i> . [ <i>Keith Buckingham's</i> almost identical example sold for £1267, and his less well centred example sold for £2350, giving an average of £1808]	1,500 <sup>T</sup>
------------	---	------	--	--------------------

**Lot 676**

<b>676</b>	*	A B1	- <i>De La Rue</i> Printings 10/- deep bright blue SG 23d, a lovely shade, well centred, very lightly mounted, Cat £500.	250 <sup>T</sup>
------------	---	------	--	------------------

**Lot 677**

<b>677</b>	*	A B1	- <i>De La Rue</i> Printings 10/- dull blue, well centred, Cat £250++. This shade is unlisted by <i>Gibbons</i> . It is appreciably scarcer than the "deep bright blue" shade. [ <i>Keith Buckingham</i> at page 72 suggests that only one sheet of 40 may have been issued. That is the same number as for the fabled Nauru 10/- "Cambridge" blue (or "electric blue", as labelled by <i>Buckingham</i> ). Both these rare shades were absent from <i>Mr Buckingham's</i> collection]	350 <sup>T</sup>
------------	---	------	--	------------------

**NAURU - Postal History**

678	C	B	<b>1917</b> correctly rated cover to Utah with Overprints ½d & 2d tied by light Pleasant Island cds of 23AU/17, superb strike of the 55mm 'CENSORED.' h/s in violet (the earliest recorded usage), minor blemishes.	150 <sup>T</sup>
-----	---	---	---	------------------

## NAURU - Postal History (continued)

Lot Type Grading Description

Est \$A



Ex Lot 679

679	C/CL	A/B	1921-53 stampless official covers to Australia (2), Great Britain (4, two registered), New Zealand or the United States (2), four with 'OFFICIAL PAID/NAURU' cds, three different variants of the '[crown]/ADMINISTRATION/OF/NAURU' handstamps, condition variable. Scarce group. (7)	350 <sup>T</sup>
680	C	B	1923 commercial cover to Victoria with scarce franking of Central Overprints 2d orange SG 16 tied by 28½mm Pleasant Island cds of 25AU23, clipped corner at upper-left & opened on three sides.	150 <sup>T</sup>



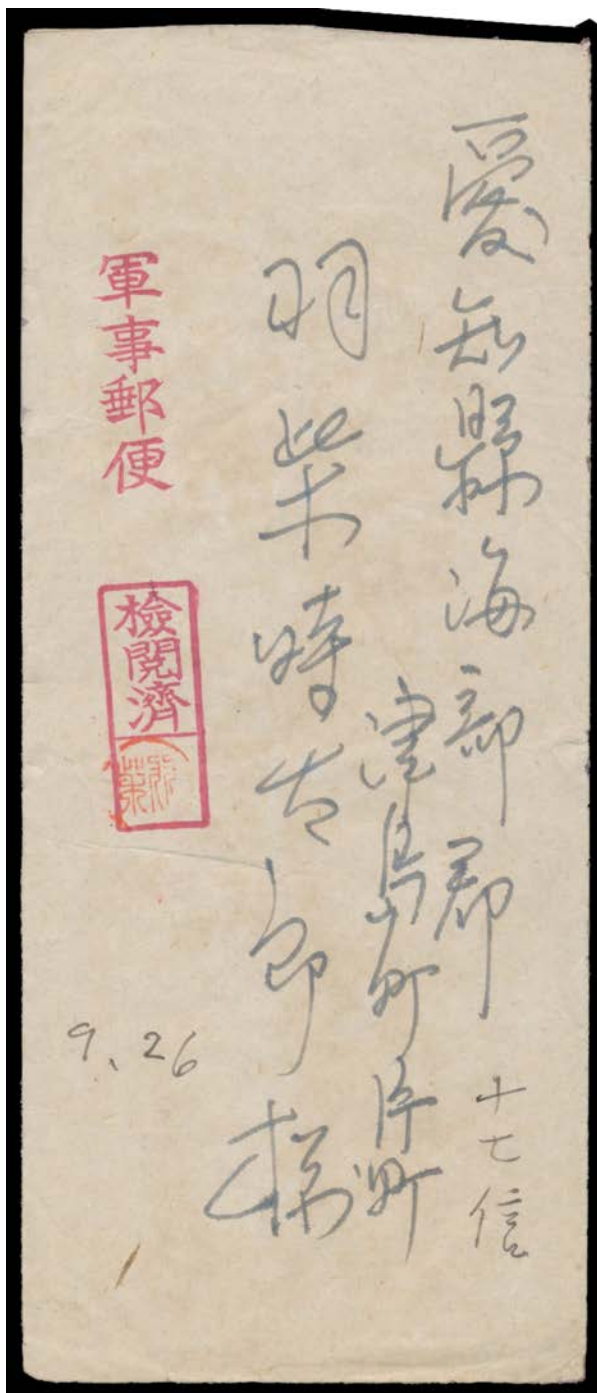
Lot 681

681	C	A-	1927 Pflum cover to Pennsylvania "Per Air Mail/via Sydney/& San Francisco" with rare albeit philatelic combination franking of <i>Rough Paper Ships</i> 1d strip of 3 tied by 'NAURU/21SP26/CENTRAL/PACIFIC' cds plus <b>United States 24c Airmail</b> cancelled at San Francisco, 'PHILADELPHIA PA' arrival b/s. [During the 1920s, the United States allowed their own stamps to be affixed at overseas destinations to pay the US internal air mail of 8c 16c or 24c depending on how many sectors were to be flown. Even philatelic examples from any of the Pacific Islands are seldom seen and examples from Nauru are rare]	750 <sup>T</sup>
682	C	A	1932 (c.) correctly rated but philatelic cover to NSW with <i>Rough Paper Ships</i> ½d strip of 3 and two superb strikes of the straight-line 'S.S. NAURU CHIEF' handstamp. Eye candy!	300 <sup>T</sup>
683	C	B	1933 cover with 'CO-OPERATIVE SOCIETY/NAURU/CENTRAL PACIFIC' imprint in grey-blue at upper-left, <i>Rough Paper Ships</i> 1½d cancelled on arrival with boxed 'LOOSE SHIP LETTER' handstamp of 'MELBOURNE' (b/s), minor blemishes.	150 <sup>T</sup>
684	C	A	1940 two <i>HSF Dunne</i> covers - one with imprint of <i>SC Lau</i> at Nauru at lower-left - each with 1½d Ship & Nauru cds, different Melbourne 'Opened by Censor' labels tied by boxed 'PASSED BY/CENSOR/V87...' or '.../V122...' h/s in violet.	120 <sup>T</sup>

## NAURU - Postal History (continued)

Lot Type Grading Description

Est \$A



Lot 685

**685** CL B **1943** (Aug 19) stampless cover to Japan with two boxed chops in magenta & circular Censor's chop of *Hashiba* in red, peripheral blemishes. With the lengthy enclosed letter from *Tadao Hashiba* to a family member: Very few entire letters from the Japanese on Nauru have survived. *Ex John Darnell*: acquired at the *Prestige* auction of 17/2/2012 for \$2645.

The writer states (translated) "...My aim is to do all I can not to die in this insignificant place. Contagious disease, amoebic dysentery, is rife here and not a few have died from it....A deadly struggle is being waged day and night in the Solomons...though one is in no doubt that Japan will prevail...everyone without exception, officers and men, has had dengue fever this past month...I wonder what fate has in store for me...So far I've had only one letter." In addition to the ravages of tropical diseases, some 300 Japanese died of starvation & many others resorted to cannibalism. Nauru was surrendered to the Australians on 13.9.1945.

1,400<sup>T</sup>

**686** CO B **1951** stampless OHMS envelope (266x173mm) with 'ADMINISTRATION OF NAURU/CENTRAL PACIFIC' imprint at lower-left, to Switzerland with "T" in red pencil & on arrival assessed "2.70" (fr) postage due paid with 20c Dam & 50c Cable Car x5 tied by 'BERN 1/BRIEFAUSGABE' cds, minor bends. A terrific item for the postage due collector, or thematicist (transport, energy, skiing, tourism etc).

150<sup>T</sup>

---

Lot	Type	Grading	Description	Est \$A
-----	------	---------	-------------	---------

---

**NEW GUINEA - 'N.W./PACIFIC/ISLANDS' Overprints**

---

**Lot 707****707**

F

A C1

**1915-16 KGV** 4d chrome-yellow SG 70b type c, unusually with 'PO PLEASANT ISLAND/AU23/16/(NAURU)' cds, Cat £275+. Underappreciated; most examples offered are colour changelings.

250

---