

Lot	Type	Grading	Description	Est \$A
-----	------	---------	-------------	---------

COMMONWEALTH OF AUSTRALIA - Kangaroos - First Watermark - Official Stamps

135	G/H	A/B	PERFORATED 'OS/NSW': PERFORATED 'OS/NSW': 1d red block of 10 (5x2), corner fault at lower-right, ten strikes of NSW BN '879' of Adamstown.	100
-----	-----	-----	--	-----

COMMONWEALTH OF AUSTRALIA - Kangaroos - Third Watermark



Lot 155

155	*	A B1	13a 3d olive-green with the Watermark Inverted BW #13Ka block of 4, well centred, very lightly mounted, Cat \$900++ (plus a significant premium for the attractive shade).	600
-----	---	------	--	-----

COMMONWEALTH OF AUSTRALIA - Postal History



Ex Lot 374

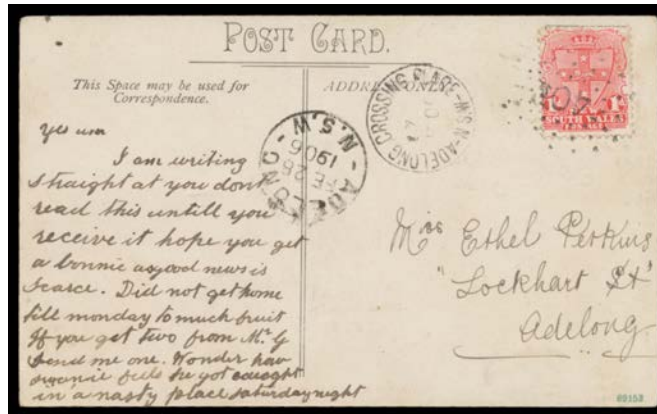
374	C	A/B	1904-07 three Tatts covers to Hobart with Postage Dues Blank Tablet 2d x2 or 4d & 1906 PPC from GB with 'ALDERNEY' (Channel Islands) cds & Filled Tablet 1d tied by 'EDITHBURGH/SA' squared-circle. (4)	400 ^T
-----	---	-----	---	------------------

NEW SOUTH WALES



Lot 407

407	O	A/A-	1850-51 Sydney Views Plate I (No Clouds) Hard Bluish Paper 1d pale red SG 6 horizontal pair [19-20], margins just touching - at upper-right - to large, BN '46' of Gundagai, Cat £950+.	600
-----	---	------	---	-----

NEW SOUTH WALES - Postal History**Ex Lot 417**

417	C		POSTMARKS: Shoebox of mostly PPCs with cds 'ADELONG' to 'YOUNG' many with numerals, stated to have very little duplication, noted scarce postmarks & numeral ties and many closed offices, condition very variable & quality of the strikes rather mixed but an excellent basis for expansion. <i>Ex John Forrest.</i> (340+) 450 ^T
418	SDC		- Seven pages of Newtown markings with Rays '182' Type 1 (rated R) x3, Type 2 range including on a <i>Tatts</i> cover with superb triple-oval 'REGISTERED/NEWTOWN NSW' d/s & 'REG No' h/s both in rosine, various duplexes including on 5d on 1891 registered cover to Victoria, etc. <i>Ex John Forrest.</i> (67 + 10 covers) 100

VICTORIA**Lot 468**

468	F	A-	1850-57 Half-Lengths Second State of the Die (<i>More Colour above 'VICTORIA'</i>) 1d pale dull red-brown SG 5a, almost full margins - just shaved at right - with a fragment of the adjoining unit at left, neat Butterfly '15' cancel of Geelong, Cat £450. Unusually fine for this issue. 250 ^T
-----	---	----	--

**Lot 471**

471	H	A+	- <i>JS Campbell & Co</i> 1d orange-red SG 23 marginal horizontal pair [13-14] from the left of the sheet, margins just clear to huge, two bold/superb strikes of Barred Oval '2' of Geelong, Cat £280++. A beautiful & superb multiple. <i>RPSofV Certificate</i> (2015). [This pair came to us with a <i>BPA Certificate</i> (1998) as the rare "rose" shade SG 23a, Cat £1500++. This was clearly wrong. However, in the <i>BPA's</i> defence, this is a common error, but it highlights why Australian stamps - and especially shades - need to be expertised by people who handle them regularly. <i>Geoff Kellow</i> at page 51 states "The rose shade is often misidentified...Proper identification depends on paper characteristics, or the presence of known <i>Campbell</i> secondary flaws] 400 ^T
-----	---	----	--

Lot Type Grading Description

Est \$A

VICTORIA - Postal History**Lot 491**

- 491** C A- **1850** (Nov 12) cover to Sydney endorsed "Per Shamrock" but crossed-out & amended in the same hand to "Per Overland Mail" with very rare franking of *Ham* 1d dull red SG 8a horizontal **abnormal pair** [5-28, the right-hand unit being substituted for 6] with almost full margins (the left-hand unit with *White Flaw Obliterating the Upper-Right Corner*), Butterfly '1' cancels of Melbourne (b/s) & Sydney arrival b/s of NO*19/1850, minor blemishes. *Ex JRW Purves, Rodney Perry & Ken Barelli. Rodney Perry Certificate* (2006, unsigned). [Abnormal pairs are very scarce, and usage on cover is quite remarkable]

3,000

**Ex Lot 493**

- 493** C **1855-80** goldmining group with crowned-oval 'HEPBURN' d/s on 1855 piece, then seven covers (two - one a front only - are registered) with various Classic frankings including *Woodblocks Imperf 2/-* & *Perf 12 2/-*, scarce cds of 'EGANSTOWN', 'GAFFNEYS CK', 'KANGAROOFLAT' (one word) & 'YANDOIT' noted, all but one with various 'PD' (Paid to Destination) markings, rather scruffy but value at the estimate. [Priced by a European dealer for €1750] (**8 items**)

500

**Lot 495**

- 495** C A- **1857** small local cover with Emblems Imperf 1d pair (margins good to large) tied by BN '3' of 'CASTLEMAINE' (oval b/s), two very fine strikes of the unframed-oval 'ADVERTISED/AND/UNCLAIMED' h/s. Delightful. [Many itinerant goldminers had their mail addressed to the closest post office. As there was no delivery and notification system, acceptance of mail required the personal attendance of the addressee. Often, unsuccessful miners moved to "greener pastures" without advising the post office of their whereabouts (often unknown in advance). *Ken Barelli's* similar cover sold at the *Prestige* auction of 2/5/2014 for \$1265]

800^T

VICTORIA - Postal History (continued)

Lot Type Grading Description

Est \$A



Lot 497

497	C	A-	1858 internal cover with <i>Emblems</i> 4d rose-pink SG 65 irregularly separated single just tied to outer by BN '57', largely fine oval 'KYNETON/[crown]/1*MA/1858/VICTORIA' (1st March, not May) & Melbourne arrival b/s. This is a significant cover because it proves that No Watermark imperf stamps were issued prior to the cancellation for fraud & theft of <i>Calvert's</i> contract, in April 1858. Ex <i>CL Pack</i> , <i>BD Forster</i> , <i>Rodney Perry</i> & <i>Ken Barelli</i> .	500
500	C	B	- cover to Wales "pr Monthly Mail/Collumbian" [sic] with <i>Emblems</i> 1d pale emerald SG 62 horizontal pair plus Rouletted 4d pale dull rose on <i>Vertically Laid Paper</i> SG 71 tied by BN '9' cancels of Beechworth (light b/s of AU-13/58), Melbourne & 'COWBRIDGE/ OC19/58' b/s, ironed-out vertical fold well clear of the stamps, some blemishes. A scarce franking. Carried per "Columbian", departed Melbourne 17/8/1858, arrived Suez 3/10/1858; then per "Cambria", departed Alexandria 5/10/1858, arrived Southampton 18/10/1863.	250



Lot 501

501	C	B	1859 quadruple-rate entire headed "Beehive Association" with <i>Emblems</i> 4d rose-pink SG 85a pair & two singles, BN '60' & very fine oval 'MALDON/[crown]/NO30/1859/VICTORIA' b/s, Melbourne arrival b/s, minor faults that don't affect the fine facial appearance. A very scarce internal franking. Ex <i>Rodney Perry</i> & <i>Ken Barelli</i> .	400
-----	---	---	--	-----

VICTORIA - Postal History (continued)

Lot Type Grading Description

Est \$A



Lot 507

- 507** C A **1860** entire to Scotland "p Emue [sic] SS/Via Marseilles" with *Emblems* 1d dull green SG 84 plus *Rouletted* 2d SG 69 & *Queen on Throne* Rouletted 6d SG 73, "killer" BN '1' & Melbourne b/s of AP24/60, British 'Insufficient Postage ("3")/Fine ("6")' & 'MORE/TO/PAY'-in-circle handstamps both in red, Edinburgh arrival b/s of JU13/60, internal writing shows through the paper but otherwise remarkably fine & attractive. Carried per "Emeu", departed Melbourne 25/4/1860, arrived Suez 2/6/1860; then per "Panther", departed Alexandria 4/6/1860, arrived Marseilles 10/6/1860. Ex Rodney Perry & Ken Barelli.

Presumably sent in a closed bag as there is no London transit marking. If the underpayment had been noted in Melbourne, it should have been sent by the long sea route. However, the arrival date proves carriage via Marseilles.

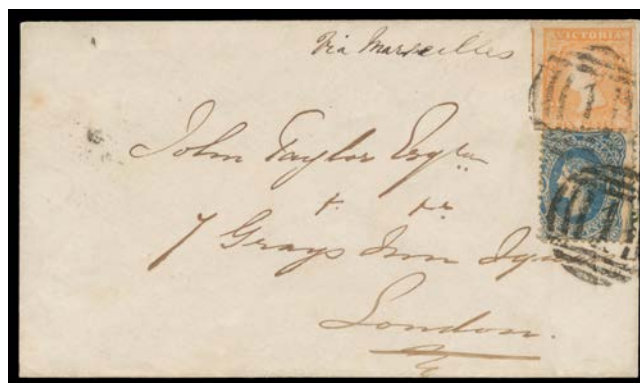
500



Lot 508

- 508** C B - flimsy entire to England "Via Marseilles" with *Emblems* 4d rose-pink SG 87 vertical pair plus *Wove Paper* 1d yellow-green SG 84/a gr on, barely legible BN '214' & poor 'BIRREGURRA' b/s of MY13/60, minor blemishes. Carried per "Benares", departed Melbourne 18/5/1860, arrived Suez 28/6/1860; then per "Panther", departed Alexandria 29/6/1860, arrived Marseilles 6/7/1860. Ex Sir Chester Beatty, BD Forster, Rodney Perry & Ken Barelli. [The reverse was sealed with a piece of selvage from a sheet of the Woodblock Perf 13 2/- blue/green SG 129 with part of the marginal inscription!]

350



Lot 509

- 509** C A- - (Dec 26) cover to London "Via Marseilles" with scarce franking of *Woodblocks Rouletted* 6d orange SG 53a & *Beaded Ovals* 3d blue SG 88 tied by BN '1' of Melbourne (b/s), London arrival b/s of FE12/61 in red. Carried per "Jeddo", departed Melbourne 26/12/1860; "Nemesis", departed Galle 18/1/1861; & "Euxine". departed Alexandria 4/2/1861, arrived Marseilles 10/2/1861.

1,000^T

VICTORIA - Postal History (continued)

Lot Type Grading Description

Est \$A

**Lot 510**

- 510** C B **1861** mourning cover to England "Per Behar/Via Marseilles" with *Emblems* 1d yellow-green SG 98/a vertical strip of 3 plus *Queen on Throne* Rouletted 6d blue SG 73 BN '5' & tiny 'BALLARAT/JA25/61/VICTORIA' b/s plus similar Geelong & Melbourne transit b/s, 'M' h/s applied at Geelong, very fine 'BIRMINGHAM/MR17/61' arrival b/s, minor soiling. Carried per "Behar", departed Melbourne 26/1/1861, arrived Galle 14/2/1861; per "Nubia", departed Galle 17/2/1861, arrived Suez 4/3/1861; then per "Valetta", departed Alexandria 8/3/1861, arrived Marseilles 15/3/1861. Ex JRW Purves, Rodney Perry & Ken Barelli.

400

VICTORIA - Postmarks**Lot 517**

- 517** C C D1 **BARRED NUMERALS:** '307' of 'GROWLERS CK' (superb b/s of JU27/65; LRD) poor but discernible (inverted) strike on *Laureates* 4d on stained cover. Rated RRRR. PO 1/8/1860; renamed Wandiligong 25/1/1875. [*Goldmining:* 6km SSE of Bright. The addressee "JB Ware" was *JB Were*, Melbourne's first & most prominent stockbroker]

750^T**Lot 520**

- 520** C C A1- **Quartz Reef Stawell:** 'QUARTZ REEFS STAWELL/JA6/70/VICTORIA' largely very fine arrival b/s on soiled cover from Geelong to "Reefs Pleasant Creek". From Quartz Reef Pleasant Creek c.1867; replaced by Stawell (2) 1/7/1870. [*Goldmining:* 2km from Stawell. The cds is recorded SE3/69 to JA31/70 only]

500^T

MALAYA - Straits Settlements - Postal History**Lot 650**

650 C A- **1867** part-entire to India "Per P&O Str Emeu" with scarce franking of '[crown]/THREE CENTS' on 1a brown SG 3 single & strip of 3 (Cat £380+ x20+ on cover) tied by 'B/172'-in-octagon h/s of Penang, superb 'GPO/MADRAS/OC12/1867/OVERLAND MAIL' (TPO ?) b/s in red. The Overprints were issued 1/9/1867.

500

**Lot 651**

651 C B **1870** cover to Scotland "via Brinidisi with 2c brown single & pair and 32c pale red SG 18 (small faults, Cat £70 x12+ on cover) tied by 'PENANG/DE8/70 - D17' duplex (*Proud* #KD5), fair arrival b/s of JA9/71, minor soiling & repaired flap fault. [*Ted Proud* states at page 94 that the rate was 38c between 17/11/1869 & 6/1/1871, when it was reduced to 30c (unless by French packet, for which the rate remained at 38c)]

500

**Lot 654**

654 C B **1875** (Jan) flapless cover to Hampshire with GB 1/- green tied by '42'-in-diamond-&-bars cancel of the London Foreign Branch, docketed on the face "Lieut JEC Goodrich", minor blemishes. *Lieut Goodrich* was serving on the battleship HMS "Audacious" at Penang. Carried per P&O "Golconda" to Galle; then "Mirzapore" to Southampton, arrived 8/3/1875. Ex *Geoffrey Osborn*.

500

MALAYA - Straits Settlements - Postal History (continued)

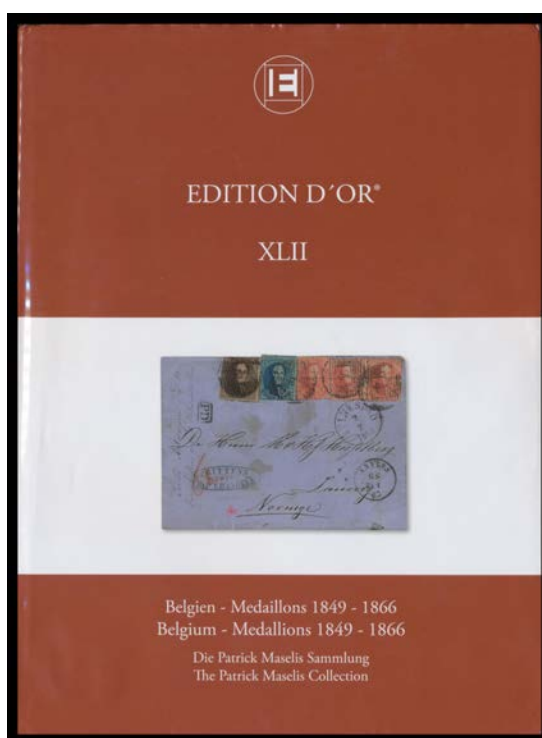
Lot Type Grading Description

Est \$A

**Lot 659**

659 O A/B **SHIP-BOARD POSTMARKS:** British Mail Boat cancels comprising 'A81', 'A86' x2, 'A99' x2 & '[B]03', on 1867 Surcharges on India 12c on 4a & 24c on 8a x2, or 1867-72 Crown/CC 2c 12c & 32c x2, a few minor defects, the strikes are fine to very fine, Cat £680+-. Rare on Straits stamps. Noted as mostly *Ex Dr Woods*. Acquired at the *Spink* sale of 7/3/2007 for £1080. [These handstamps were issued to *P&O* staff on contract mailboats. They are found on mail posted aboard ship but most examples are from soldiers' & sailors' covers that were forwarded to the mailboats without cancellations]

1,500

PHILATELIC LITERATURE**Lot 798**

798 L A **BELGIUM:** "Belgium - Medallions 1849-1866: the *Patrick Maselis* Collection" being a full-colour presentation of the pages from the *Grand Prix* exhibit formed by one of this generation's most prominent philatelists, published by *Corinphila* (2014) being Volume XLII in their outstanding *Edition d'Or* series of large-format volumes (255x345mm).

200