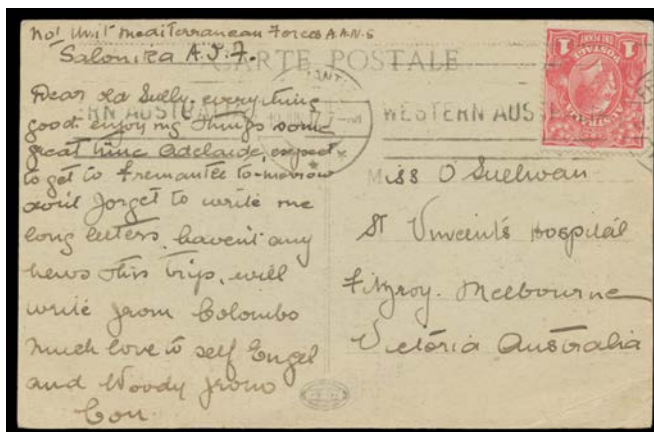


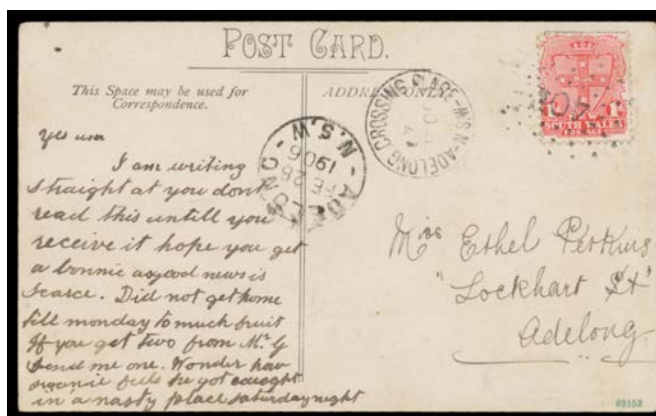
Lot Type Grading Description

Est \$A

COMMONWEALTH OF AUSTRALIA - Military & Censor Mail

Lot 394

- | | | | |
|-----|---|----|--|
| 394 | C | A- | WORLD WAR I: 1917 PPC of SS "Mooltan" to Melbourne with KGV 1d red tied by Fremantle machine cancel of 19JUN17, message headed "No 1 Unit Mediterranean Forces AANS/Salonika AIF" & written at sea by a nurse en route to Greece. The only such item we have seen. Ex Tony Finlayson: acquired at the <i>Prestige</i> auction of 14/11/2014 for \$506. [The British had requested Australia to send nurses to Salonika. The "Mooltan" departed Melbourne in June with 462 nurses aboard. The writer states "...some great time Adelaide, expect to get to Fremantle tomorrow...will write from Colombo..."] |
|-----|---|----|--|

450^T**NEW SOUTH WALES - Postal History**

Ex Lot 417

- | | | | |
|-----|---|--|--|
| 417 | C | | POSTMARKS: Shoebox of mostly PPCs with cds 'ADELONG' to 'YOUNG' many with numerals, stated to have very little duplication, noted scarce postmarks & numeral ties and many closed offices, condition very variable & quality of the strikes rather mixed but an excellent basis for expansion. Ex John Forrest.(340+) |
|-----|---|--|--|

450^T**BRITISH COMMONWEALTH OCCUPATION FORCES (B.C.O.F.)**

- | | | | |
|-----|---|---|---|
| 544 | C | B | 1950 social usage by air to Scotland of Japanese PPC with Australian 3d pair tied by light 'AUST ARMY' cds, minor bends. VERY scarce postcard usage. |
|-----|---|---|---|

150

MALAYA - Straits Settlements - Postal History**Ex Lot 647**

- 647** C Superior group comprising 1858 stampless entire to Mauritius "p City of London"; 1867 stampless entire with 'PENANG/11/DEC/1867/P.O.' cds & French 'POS.ANG.V.SUEZ/P.AN.A.MARS' mailboat cds in red; 1867 badly dented cover to Bombay with East India 4a cancelled at Singapore; 1873 double-rate cover to India with 12c x2 & 'SINGAPORE/ A /JA9/73/PAID' cds in red; 1874 outer to "Baden/Germany" endorsed "via Triest" with 12c tied by a company's cachet in blue & poor 'PENANG - D17' duplex; 1874 cover to Scotland with 30c SG 17 & 24c SG 16 - paying the late fee - both pre-cancelled with *Chartered Mercantile Bank* cachet & tied by Circle-of-Squares "killer" (*Proud #K15*); 1875 stampless cover 'PENANG' to 'HONG-KONG' (b/s); and 1880 cover to Paris with 8c & three different French mailboat d/s; and eight mostly used PPCs; condition variable. **(16)**

750

**Lot 658**

- 658** C B **1900** PPC of the Singapore (?) "Cricket Club" endorsed "Feld Post" to Germany with Straits 3c brown tied by 'KAIS DEUTSCHE/MARINE-/SCHIFFSPOST/ No 70 /7 10/00' cds, 'WINDERSHEIM' arrival cds, minor soiling. The ship was *en route* to China in response to the *Boxer Rebellion*.

350

**Ex Lot 662**

- 662** CPS A/B **SHIP-BOARD POSTMARKS:** 1895 'INDO-CHINE' 15c Letter Card (with bold boxed 'F ENGLER & Co/SAIGON' security datestamp in violet) & 1897 *Denis Frères* cover both with 'LIGNE DE SAIGON A SINGAPORE' cds in blue, and 1901 Indo-China PPC with 'PAQ/SAIGON A SINGAPORE' cds in blue, to Germany (the earliest) or France. The first item is *Ex TV Roberts*. **(3)**

300

Lot Type Grading Description

Est \$A

NEW GUINEA - German (Deutsch) New Guinea - Postal History**Ex Lot 693**

693	CPS		INWARDS MAIL: Mail from Germany comprising four 1904-06 PPCs (one with Bavarian 5pf, another with Seepost cds & 'PENANG TO SINGAPORE' mail sorter cds), 1907 2pf+3pf Postal Card with full message and 1907 & 1908 covers (the first to <i>Karl Viewig</i> with lengthy letter & background info from the internet) all with 'HERBERTSHOHE' arrival cds, also 1906 10pf 'Kartenbrief' with 'MAX WARMING/HAMBURG' label & superb 'STEPHANSORT' arrival cds & June 1914 mercantile postcard to Herbertshohe with Sydney DLO endorsements & 'PASSED BY CENSOR/25JE15/=C.S=' cds in violet (faults), generally good to very fine. (10 items)	400
694	CPS		- 1905 (stamp missing) & 1910 PPCs from Japan, 1908 uprated 5h Postal Card from Moravia (Austria) with full message, a very fine 1919 cover from Switzerland, and a very spotty 1909 uprated KEVII 1d Envelope from New Zealand. (5)	200

NEW ZEALAND - Postal History

740	CPS		Mounted selection of mostly PPCs including a few Maori subjects, <i>Tourist & Health Resorts</i> type, etc, also 1903 <i>Grand Lodge of NZ</i> mourning cover with ½d Mount Cook, 1901 1d on 1½d Letter Card with 'LUMSDEN' cds, KEVII ½d Envelope uprated with ½d Mount Cook, etc, good postmark content especially early machine types, condition variable. (69)	250
-----	-----	--	---	-----