

Lot	Type	Grading	Description	Est \$A
-----	------	---------	-------------	---------

COINS & BANKNOTES - AUSTRALIA - Decimal Coins

11	\$	A+	Proof year sets 1978-2007 (ex 1980 1985 1990-94 1996 & 1997) plus 2001 State & Territory Proof sets and \$1 Unc coin packs (8). (24 sets)	800
14	\$	A+	1998-2005 <i>Australian Baby Coin</i> Proof sets, Cat \$2515. (8 sets)	750
17	\$	A/A+	TEN DOLLARS: 1982-97 \$10 Proofs comprising 1982 Games & 1985/1986/1987 State Series (all x2), 1988-1993 and 1991 Tasmania, Hobart Coin Fair. 1995 Numbat standard & <i>Piedfort</i> plus 1996 Whale & 1998 Wombat <i>Piedforts</i> . 1997 Sydney pair Unc, 1982 Games & 1986-93 State Series, Cat \$840.	400

COINS & BANKNOTES - AUSTRALIA - Decimal Gold Coins

18	\$	A+	1990 \$5 Gold Proof "Australian Nugget" 1/20th oz (1.571g) 24ct and \$5 Platinum Proof "Australian Koala" 1/20th oz 99.95% pure. (2)	100
----	----	----	---	-----



Ex Lot 19

19	\$	A+	TWENTY-FIVE DOLLARS: 2005 2009 & 2013 "Australian Sovereign" proofs in as new packaging. Total 0.706oz agw. (3)	900
----	----	----	---	-----



Lot 20

20	\$	A+	ONE HUNDRED DOLLARS: 1995-2003 \$100 "Floral Emblems of Australia" full set of nine proofs in presentation box, 24ct (99.9%), each 1/3 troy oz (Total 3oz agw).	3,500
24	\$	A+	TWO HUNDRED DOLLARS: 1980 Koala, 1982 Commonwealth Games x2, 1983 Koala, 1987 First Fleet Departure and 1988 First Fleet Arrival proofs. (6)	2,400

COINS & BANKNOTES - AUSTRALIA - Decimal Gold Coins (continued)

Lot Type Grading Description

Est \$A



Lot 26

26 \$ A+ - 1989-94 Pride of Australia 22ct proofs in presentation box, Total 1.767oz agw.

2,000

COINS & BANKNOTES - REST OF THE WORLD



Ex Lot 39

39 \$ A+ **GREAT BRITAIN:** 1979 & 1980 proof sovereigns in Royal Mint casings. (2)

600



Lot 40

40 \$ A+ - 1981 proof sovereign in Royal Mint casing.

300

Lot Type Grading Description

Est \$A

COMMONWEALTH OF AUSTRALIA - Kangaroos - First Watermark**Lot 73**

73 E A .5 ½d half-tone proof of a Type 3a essay (with Value Tablet at Upper-Left & "Rabbit Ears") in red on highly surfaced white paper (72x76mm) BW #KE34, Cat \$10,000. Ex Kevin Nelson & Arthur Gray. Chris Ceremuga Certificate (2012). The ACSC states that only four examples are recorded, of which two have been significantly reduced from this size.

4,000

**Lot 79**

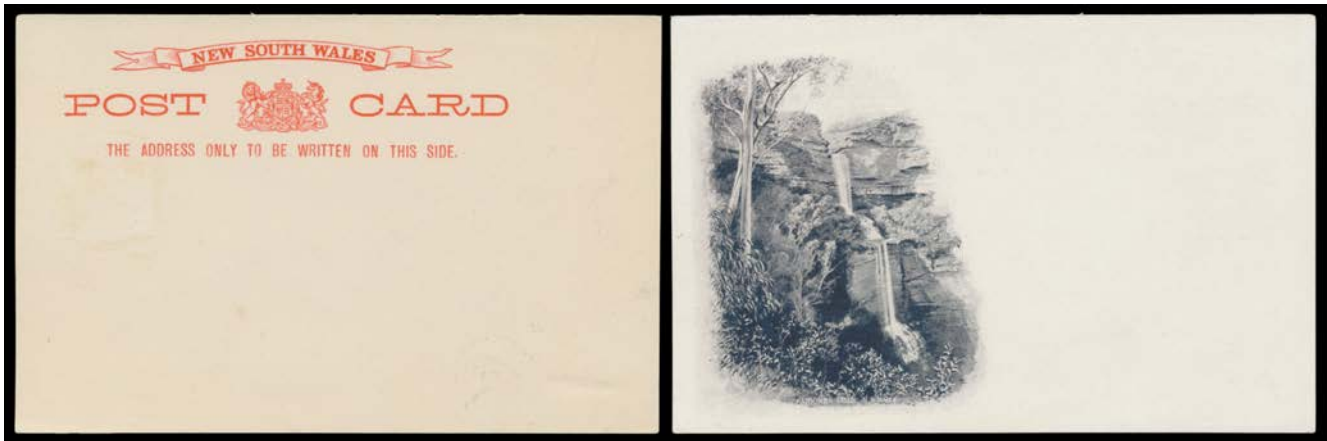
79 P B 12 3d "makeready" plate proof in black on poor quality blue-grey wove paper, a marginal Dies II-I pair from the right of the left-hand pane BW #12PP(1)Ba, the right-hand (Die I) unit with Large Void Areas at Right, margins large to huge, minor writing-ink spot at upper-right, a couple of very minor thins, Cat \$4750. Chris Ceremuga Certificate (2012). [This item may be the adjoining pair from the base of the pair illustrated in the ACSC]

1,500

COMMONWEALTH OF AUSTRALIA - Decimal Issues**Lot 353**

353 ** A B1 1982 Whales 60c with Solid Blue Background BW #930E(1), unmounted, Cat \$350. With a normal stamp for comparison. Includes a photocopy of a 1985 Australia Post letter stating "... Cambec Press have advised that the stamps originated from an unapproved proof sheet, one or more of which was inadvertently included with stamp stocks supplied to Australia Post."

300

NEW SOUTH WALES - Postal History**Lot 416**

416 P A- **POSTAL CARDS:** 1897 Scenic Issue printer's proof on very thin card with printed banner in red but no stamp & "KATOOMBA FALLS, NS WALES" in black on the reverse, a couple of very minor blemishes. Rare. *Ex Dr Ed Druce and John Bell* (NSW).

A group of 29 of these delightful essays came to light only in 1984, comprising six different designs in a range of colours, some with 'Stamp'-within-a-box printed on the address side. They were almost certainly prepared by *William Gullick*, the NSW Government Printer. All have minor abrasions on the address side where removed from a reference book.

1,000

TASMANIA**Lot 460**

460 R A **1853 Couriers 4d Plate II** reprinted complete sheet of 24 (6x4) from the defaced plate in yellow-orange, 'Printed by H&C Best' and 'CW Coard Sc' imprints at the base. *Ex Wise* (1951).

1,000

Lot Type Grading Description

Est \$A

TASMANIA

Lot 461

461 P A/(A) **1855 Chalons Wmk Large Star 2d imperforate plate proof block of 4** in black on ungummed unwatermarked wove paper, margins close to good, ironed-out creases. Blocks are very scarce.

850^T**VICTORIA**

Lot 473

473 E A- **1857-63 Emblems** essays by *William Bell* on a single piece of thin wove paper (70x29mm) with three die proofs in black adapted from the same Head but with two of them on a circular rather than oval field, the first of just the Head with the background too heavily engraved, the others with 'VICTORIA' and 'SIX PENCE' (lower-left corner unfinished) or 'TWO PENCE' (lower-right corner unfinished) & Small Numerals Added, a couple of insignificant blemishes. It's odd that *Bell* produced a 6d value when the tender specified production of 1d 2d & a new 4d denomination only: perhaps they had been prepared earlier in anticipation of new designs being required. Ex *Rodney Perry* and *Ken Barelli*. See "Stamps of Victoria" at page 108.

5,000

482 Ω A C1 **1901-10 V/Crown 2d mauve plate proof** on brownish cartridge paper BW #V58PP(2), corner pair, Cat \$1500.

100

VICTORIA (continued)

Lot Type Grading Description

Est \$A



Lot 483

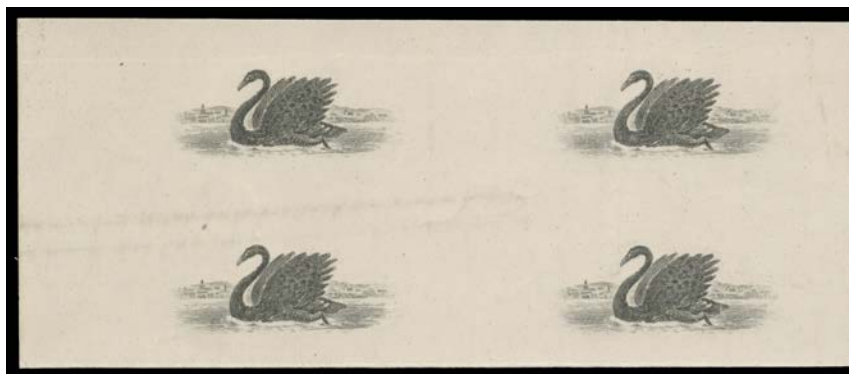
483 P A - KEVII £1 die proof Fourth State with White Line of Collar Strengthened BW #V125DP(4) in blue on thick wove paper (70x82mm); and £2 die proof First State with the King's Beard Rounded at the Base BW #130DP(1) in blue on thin greenish wove paper (63x106mm); both are very fine, Cat \$30,000 (2004). *Ex JRW Purves and Rodney Perry.* The KEVII High Values are Commonwealth Period issues, which supports our vendor's opinion that these are among the most significant proofs of Victoria. [The One Pound is the only recorded example. One other example of the Two Pounds is recorded]

55,000^T

487 R A/(B) **REPRINTS:** 1857-63 Emblems 2d pulls from a single defaced electro in black & in dull blue both on unsurfaced stout paper & very fine, and in blue-green - minor toning & a repaired tear well clear of the impression - & in purple both on highly surfaced paper with some rubbing, all 115x147mm. Most such proofs have been significantly reduced. Fullsize examples, as here, are rarely available.

350

WESTERN AUSTRALIA - Revenues



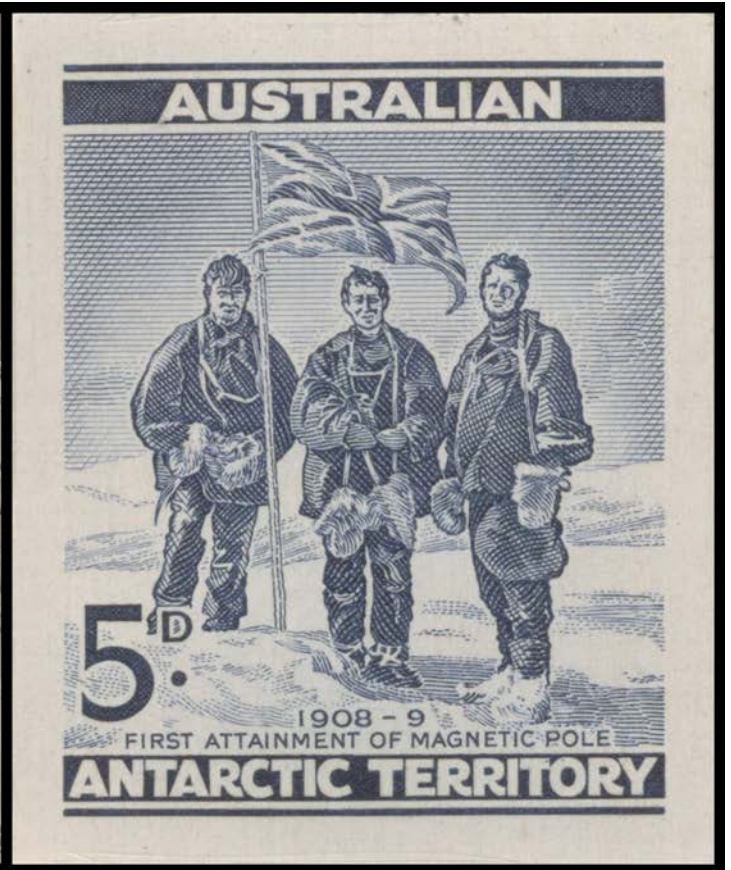
Lot 527

527 P A- **DUTY STAMP:** 1904 *Waterlow* plate proof of the Swan vignette only in black on highly surfaced thick paper, marginal block of 4 from the left of the sheet, minor wrinkles. Very fine & rare: absent from *Francis Kiddle's* collection sold by *Prestige* on 23/9/2011.

750

Lot Type Grading Description

Est \$A

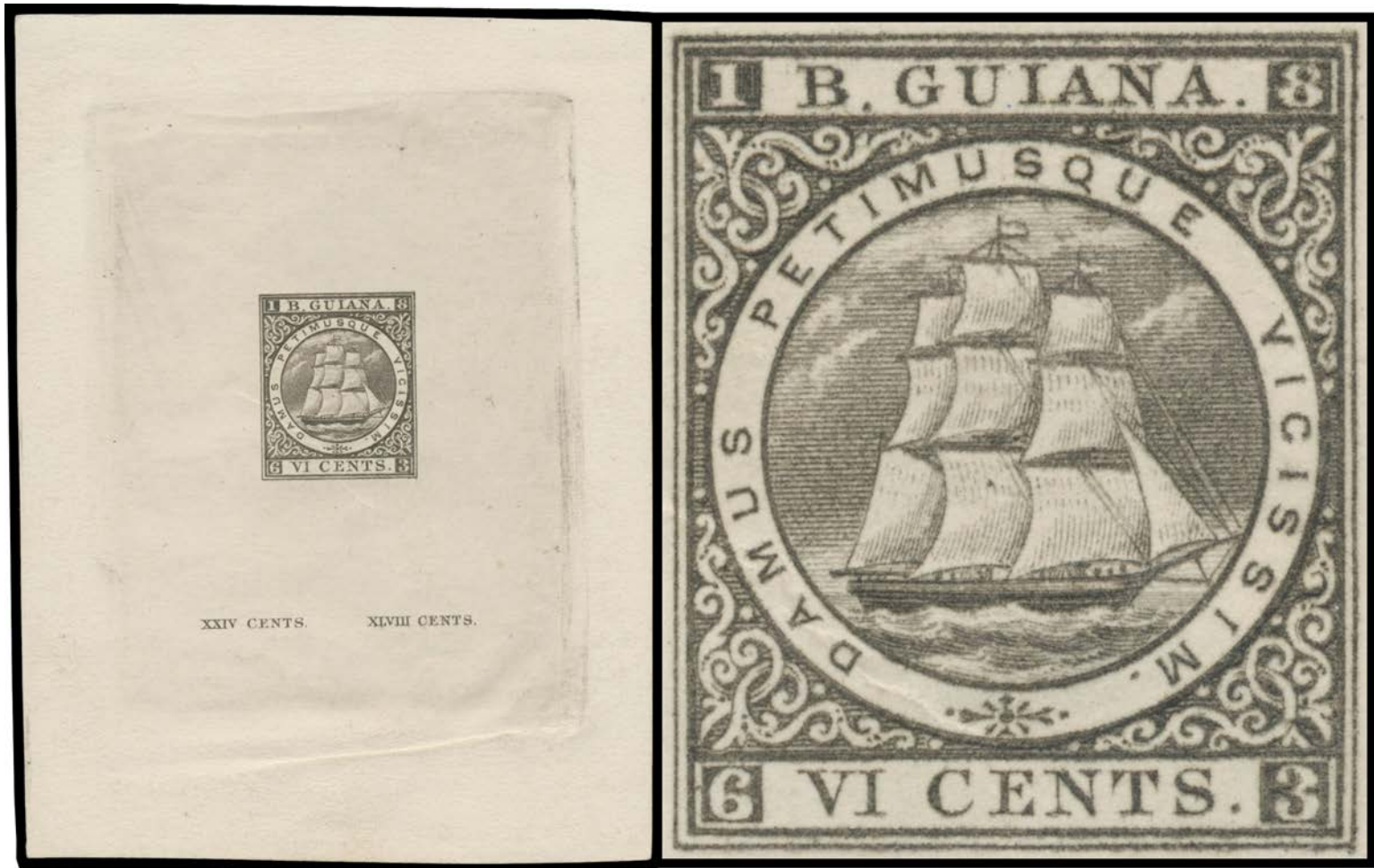
AUSTRALIAN ANTARCTIC TERRITORY**Lot 531**

531 P A- **1961 5d Magnetic Pole** die proof in the issued colour recessed in presentation mount (90x101mm) with boxed 'RBA/NOTE PRINTING/BRANCH/("16 /8-6-61")' h/s in violet on the reverse, flap lost & minor blemishes on the card but the proof is very fine. [Only 10 were produced, No 16 being given to *WL Russell*, member of the *Stamp Advisory Committee*]

2,400

BRITISH WEST INDIES

We are pleased to offer the attractive collections of Bahamas and Bermuda formed by Russell Stern from Sydney.

**Lot 586**

586 P A **BRITISH GUIANA:** 1863 New Design 6c 'VI CENTS' die proof in black on thick wove paper (84x112mm) with tablets for the two highest denominations 24c 'XXIV CENTS' & 48c 'XLVIII CENTS' below & exhibiting the outer dimensions of the die. Very fine, unique and of great philatelic importance. *Ex Earl of Crawford* and *Christies* (London, 24th May 1995). *RPSofL Certificate* (1995) states "creased", which is a ridiculous assertion: the paper has a minor wrinkle below the outer base of the die impression that is wholly incidental to the impression being made and that in no way detracts from the delightful appearance of this wonderful and unique item.

Townsend & Howe at page 55 refer to *Sir Edward Bacon's* notations in the *Townsend Collection* regarding *Lord Crawford's* collection: "Die proof in black on stout white paper of 6 cents 1863 with value VI CENTS and below...are die proofs of the labels for the XXIV CENTS and XLVIII CENTS values", a direct reference to the proof offered here.

Excepting a few plate proofs, *John du Pont's* exceptional collection did not include any essays or proofs for the 1860-76 perforated issues. And the formidable British Guiana holdings in the *Royal Collection* lack any die proof for the 6c 12c or 24c in this series. Indeed, considering that this was clearly a "key plate" issue, it seems improbable that completed die proofs for the 24c & 48c were even created, and that the 6c die proof offered here was considered satisfactory for all three values.

65,000^T**NAURU****Ex Lot 667**

667 ** A B1 **1916-23 Overprints on Great Britain KGV Heads** ½d to 1/- SG 1-12 - ex 2d *Die II* - each with 'N/P/IMPRIMATUR' handstamp *Reading Upwards or Downwards* on the reverse, unmounted. [In 1983-84, Britain's *National Postal Museum* released 10 sets - plus some odd values - at public auction: see *Buckingham* pp16-21. *Barry Gribble's* set sold for \$977] (11)

600^T