

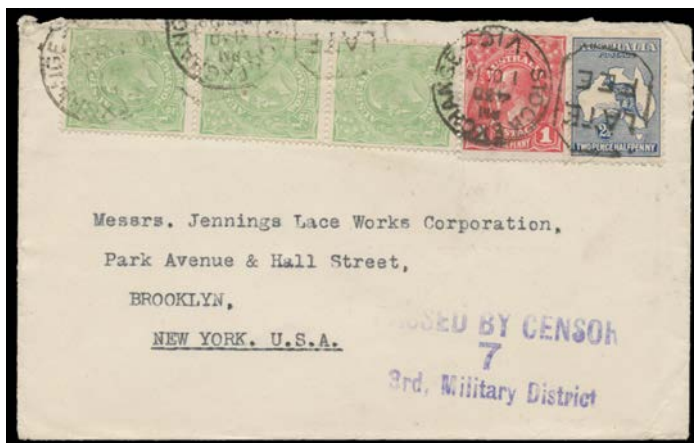
Lot	Type	Grading	Description	Est \$A
-----	------	---------	-------------	---------

COMMONWEALTH OF AUSTRALIA - Kangaroos - First Watermark

76	F	A C1	4(G)g 1d red Die IIA with <i>White Patch on Roo's Back</i> BW #4(G)g in a strip of 4 on cover front with 'KOJONUP' (WA) cds & scarce red/white registration label.	200
----	---	------	---	-----

COMMONWEALTH OF AUSTRALIA - Postal History

373	CL		Handy bundle of mostly commercial airmail covers including 1935 with Macarthur <i>Dark Hills</i> 2d pair, 1933 to Peru from the Peruvian Consul-General, 1935 to London with KGV 1/4d, 1935 to Malacca with 9d Roo & 1959 to North Borneo, etc, generally fine to very fine. (14)	300
378	C	C	1914 commercial cover to Townsville with a very well centred Kangaroo 4d orange tied by very fine 'GOOMBUNGEE/QUEENSLAND' cds, scarce red & black/white registration label, toning mostly on the reverse.	250 ^T



Ex Lot 380

380	C	A/B	1917-25 commercial covers 1) 1917 to Switzerland with 2d Roo & ½d KGV; 2) 1918 to New York with 2½d Roo plus KGV ½d x3 & 1d tied by 'LATE/FEE - STOCK EXCHANGE/VIC' duplex; 3) 1917 to Switzerland with KGV 1d red single & block of 4, 'PINAROO/SA' squared-circles; 4) 1924 to Germany with 6d brown Roo, Horsham (Vic) cds & red/white registration label; & 5) 1925 to New Zealand with 6d brown Roo & KGV 1d green, Tanunda (SA) cds & red/white registration label. (5)	500 ^T
-----	---	-----	--	------------------

NEW SOUTH WALES - Postal History

418	SDC		POSTMARKS: Seven pages of Newtown markings with Rays '182' Type 1 (rated R) x3, Type 2 range including on a <i>Tatts</i> cover with superb triple-oval 'REGISTERED/NEWTOWN NSW' d/s & 'REG No' h/s both in rosine, various duplexes including on 5d on 1891 registered cover to Victoria, etc. <i>Ex John Forrest.</i> (67 + 10 covers)	100
-----	-----	--	---	-----

SOUTH AUSTRALIA - Postal History



Lot 441

441	PS	B	NORTHERN TERRITORY: 1920 commercial usage of KGV 4d orange Registration Envelope with red Star on Flap, to Holland with large-part '[P]ARAP/8AP20/[NORT]HERN TERRITORY' cds (ERD) - a very fine strike on the reverse - and superb 'PARAP N.T.' h/s in violet <i>in lieu</i> of a registration label, removal of 2d stamp hardly detracts. Rated RRRR. Parap (1) renamed from Paraprap 1/12/1918; closed 8/10/1921.	150
-----	----	---	--	-----

Lot Type Grading Description

Est \$A

VICTORIA - Postmarks**Lot 521**

521 C A- A1- **Warramate:** 'WARRAMATE/30JY35/VIC.' largely very fine strike on KGV 5d on cover, red/white registration label. RO 1/9/1914; PO 1/7/1927; closed 30/9/1955. [Yarra Valley: 3km NE of Woori Yallock]

240^T**BRITISH COMMONWEALTH OCCUPATION FORCES (B.C.O.F.)**

540 F A B1 **1946-48 Overprints** 6d with 'B' & First 'A' in 'JAPAN' in the Wrong Fonts BW #J4g tied to commercial airmail cover to Adelaide by 'AFPO 28/23OC47/RAAF JAPAN' cds, 'AF PO/BOFU' registration label.

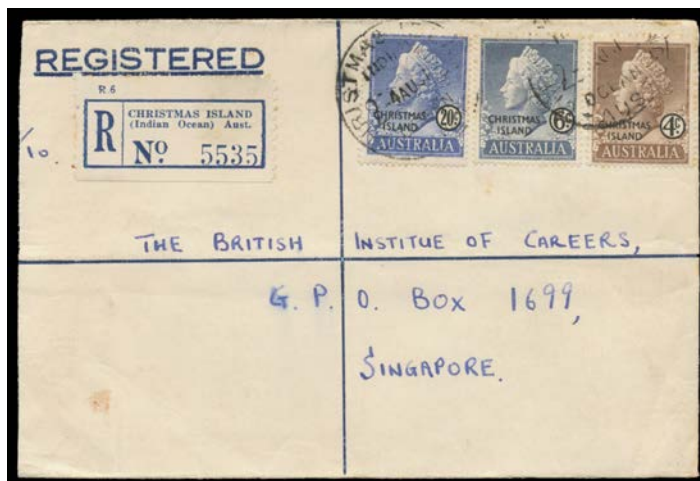
150^T**BRITISH WEST INDIES**

We are pleased to offer the attractive collections of Bahamas and Bermuda formed by Russell Stern from Sydney.

**Ex Lot 584**

584 PS **BERMUDA: POSTAL STATIONERY:** Useful collection of Postal Cards x28 including "formular" x4, 1893 'One/Penny.' on 1½d x3 (one philatelically used in 1893) & QEII 1d, plus commercial usages of KGV ½d x3 - one uprated to USA - KGVI ½d to USA & 1d x3 (two uprated for surface to USA or airmail to England); Registration Envelopes uprated to USA KGV 3d size F & 3d size H2 x2 - one with Caravel ½d x2 & 2d, the other with Pictorials 6d pair & 2½d Coronation - & KGVI size H late usage in 1965; Wrappers x8 including KGV ½d local usage & another uprated with Caravel ½d (damaged) & 1d, & KGVI ½d uprated with ½d Harbour to USA with 'THE BERMUDA TRADE DEVELOPMENT BOARD' h/s; and Aerogrammes x13 including commercial usages to GB x2 & Australia; generally fine to very fine. **(61 items)**

600

CHRISTMAS ISLAND**Lot 605**

605 C A- **1961** commercial usage of a privately produced linen-lined 'REGISTERED' envelope to Singapore with QEII 4c 6c & 20c tied by #2 cds, scarce 'CHRISTMAS ISLAND/(Indian Ocean) Aust' registration label, Singapore arrival b/s. A very scarce item.

250^T**FIJI****Ex Lot 610**

610 PS **POSTAL STATIONERY:** Box with a very good duplicated unused array of mostly QEII issues plus an excellent range of commercially used items with Aerogrammes including formular types curved NZ header from Nausori to USA & from Navua to Bermuda!, curved Fiji header x3 one from Vatukoula, 'AEROGRAMME/FIJI' with SS "Oronsay" cachet, 'OHMS/AIRLETTER/FIJI' for *Fiji Customs* to NZ, good lot of KGV1 & QE issues including correct 3d usages & uprated forms one posted aboard SS "Oronsay" with US 10c tied by Honolulu cancel, Flying Fish group including 8c uprated to India & 15c uprated to China & addressed in Chinese; good range of private formular aerogrammes including pictorial issues & *Qantas* issue to USA from a passenger in transit between Honolulu & Sydney, and types we haven't previously seen used in Fiji; also a mostly unused group of QEII Registration Envelopes including 2½d+6d, and used Size G 2c+8c, & 4c+8c, Size H 3d+9d uprated with 1/6d & 2/- and 4c+8c x3 uprated to NZ; a few mostly minor problems but generally fine to very fine. An excellent lot and a really good basis for expansion. **(150 approx)**

750

GERMAN COLONIES

614 C A- **MARSHALL ISLANDS - NAURU:** 1909 commercial cover (front only) to Austria with 10pf & 20pf tied by two light but clear strikes of the Nauru cds, 'Nauru/(Marshall Ins.)' registration label with the number amended as was common practice.

615 C A- - 1909 correctly rated philatelic cover to Germany with 3pf x2 & 25pf tied by light but clear strikes of the Nauru cds, 'Nauru/(Marshall Ins.)' registration label with the number amended, 'PFORZHEIM' arrival b/s, some very minor toning on the reverse only.

300^T250^T

Lot	Type	Grading	Description	Est \$A
-----	------	---------	-------------	---------

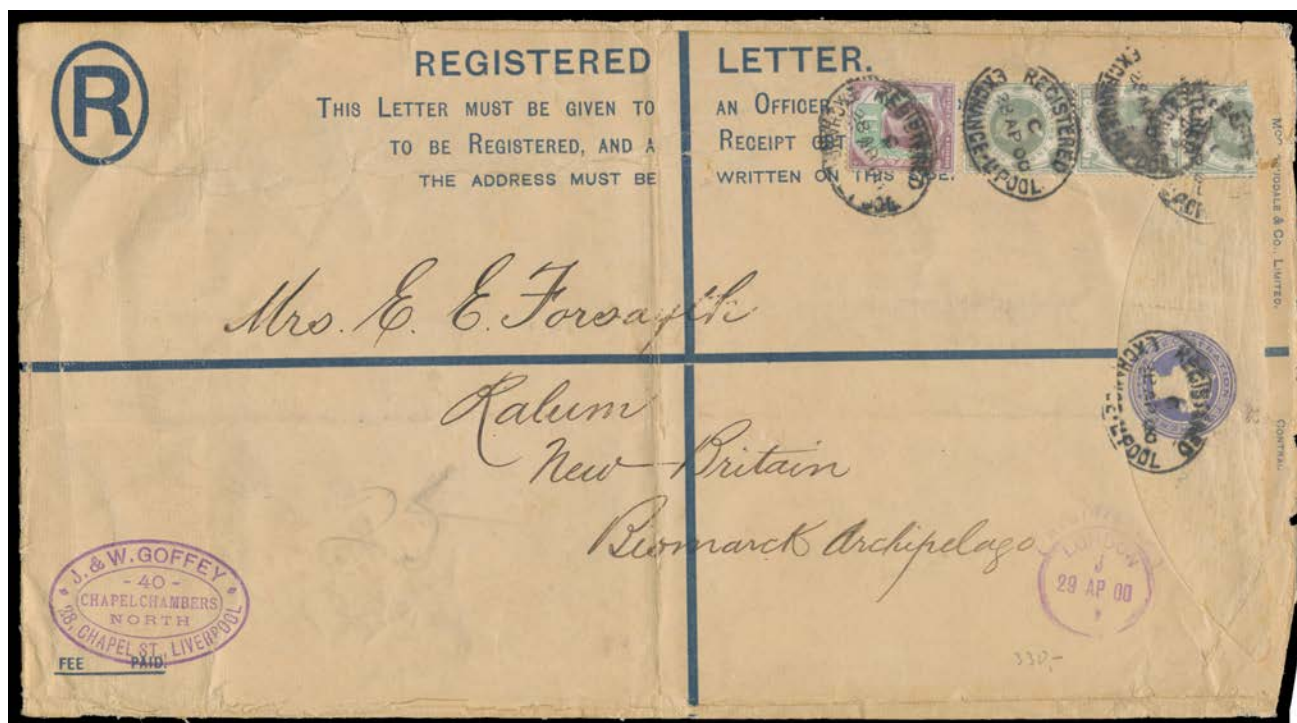
MALAYA - Straits Settlements - Postal History

656	C	A	1888 (Dec) cover with printed 'United States Consulate/at ("Singapore")' at upper-left to the USA "Per German Mail/SS Preussen/via Brindisi", 8c orange & 10c slate tied by light but largely discernible 'CONSUL OF THE UNITED STATES/SINGAPORE' intaglio seal in red & Singapore cds, light boxed registration datestamp at the base, New York arrival b/s in purple. A lovely cover. <i>Ex Derek Clayton</i> : sold in Singapore 4/7/2009 for \$S2160.	1,000
-----	---	---	---	-------

NETHERLANDS INDIES

690	PS	A	1906 usage of '15 C/NED.-INDIE' Envelope to "Tientsin/China" uprated with 1c olive, 3c orange x3 & 10c slate, 'BANDJERMASIN' squared-circle & registration label, backstamps 'N.I.AGENT SINGAPORE' squared-circle, Hong Kong & Shanghai transits & 'TIENTSIN' arrival. Bandjermasin is in the south of Kailmantan & was the capital of Dutch Borneo.	175
-----	----	---	--	-----

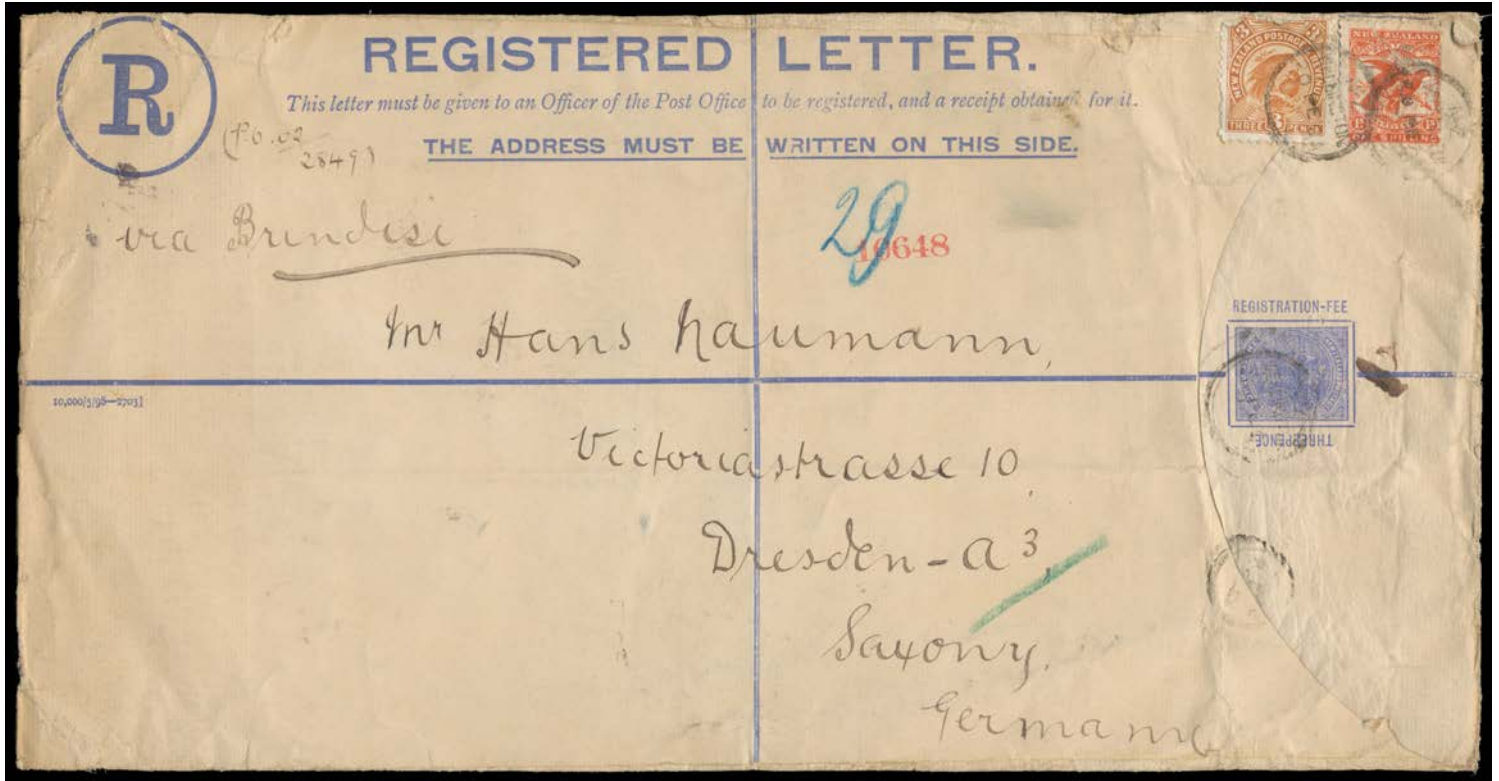
NEW GUINEA - German (Deutsch) New Guinea - Postal History



Lot 699

699	PS	C	INWARDS MAIL: 1900 usage of British 2d Size K Registration Envelope with superb 'J & W GOFFEY' (shipping company) cachet at lower-left and rare franking of Jubilees 1½d & 1/- green vertical strip of 3 (one badly damaged) tied by oval 'REGISTERED/EXCHANGE-LPOOL' d/s, to "Ralum/New Britain/Bismarck Archipelago", flap fault & central fold. [The rate was 2½d per ½oz x15 = 3½d + 2d registration. The addressee was <i>Emma Forsyth</i> , known colloquially as <i>Queen Emma</i> . Born in Samoa & a descendant of <i>King Malietoa</i> , she & her blackbirder husband traded around New Guinea from 1878. She moved to the Gazelle Peninsula in 1881 where she established large coconut & cocoa plantations, including at Ralum on Blanche Bay, near Rabaul]	500
-----	----	---	---	-----

NEW ZEALAND - Postal History



Ex Lot 743

743 PS **REGISTRATION ENVELOPES:** Size K (290x150mm) 1) QV 3d blue to Germany in 1903 with Birds 3d & 1/- tied by Wellington cds, minor faults, and 2) KGV Oval 4d brown, very fine unused; also Tonga size H2 (225x102mm) with Embossed Arms on the Flap 6d (a few faults) & 4d with '1 APRIL 93' Printed Under the Flap (fine), both unused. **(4)** 400