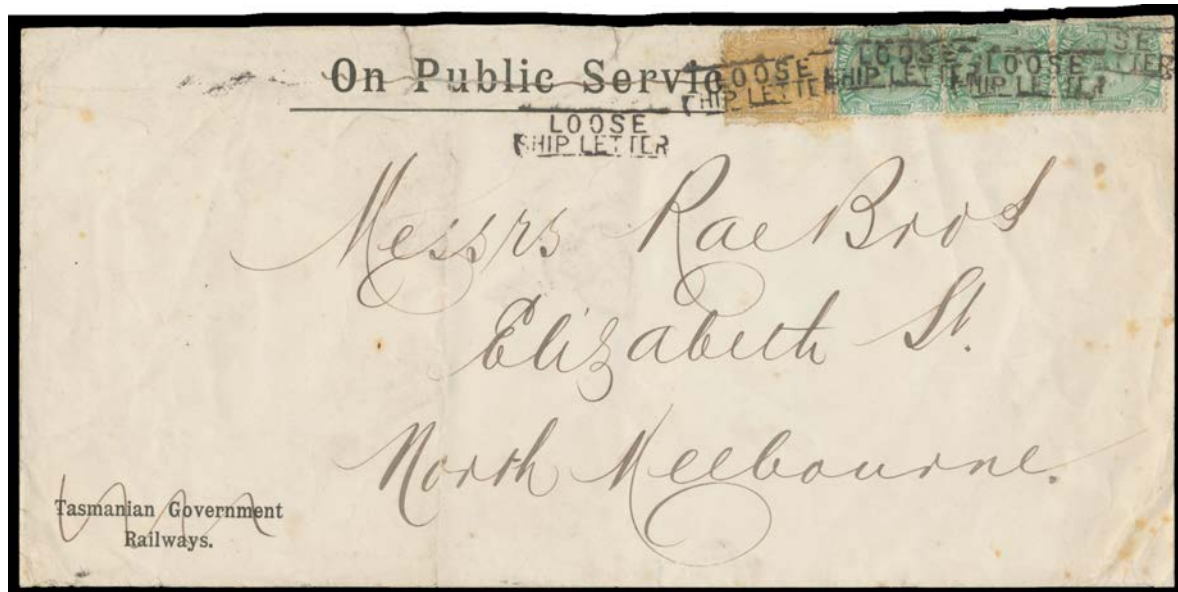


Lot Type Grading Description

Est \$A

TASMANIA - Postal History**Lot 464**

464 CL (B) **1894** OHMS cover with the heading & 'Tasmanian Government/Railways' imprint scored-through, to Victoria with Sidefaces *De La Rue* strip of 3 & Local Printing 4d buff tied by four of five strikes of the rare boxed 'LOOSE/SHIP LETTER' h/s of Melbourne (b/s), folded at left, minor tonespots & repaired opening tears clear of the stamps & postmarks. *Ex Roger Hosking.*

400

VICTORIA - Postal History

515 C A- **1885** OHMS cover with 'VICTORIAN RAILWAYS' heading locally used with 'COMMISSIONER OF RAILWAYS' Frank h/s in blue.

150^T**NEW ZEALAND - Postal History****Ex Lot 741**

741 C/CL C/B **1901 & 1902** commercial covers **1)** to New York with NSW 1d & 2d x2, some toning; & **2)** US 2c Envelope from California to Adelaide with 3c violet, trimmed at left on opening; both with boxed 'LOOSE LETTER.' cancel & 'NZ MARINE PO/RMS SONOMA' cds in greenish blue. Also an American advert for the *Oceanic Steamship Co* with "Sonoma", "Sierra" & "Ventura" (and on the other side a lovely *Atchison Topeka & Santa Fe Railway* advert for "Golf in California"). *Ex Roger Hosking.* **(3 items)**

400