

Lot Type Grading Description

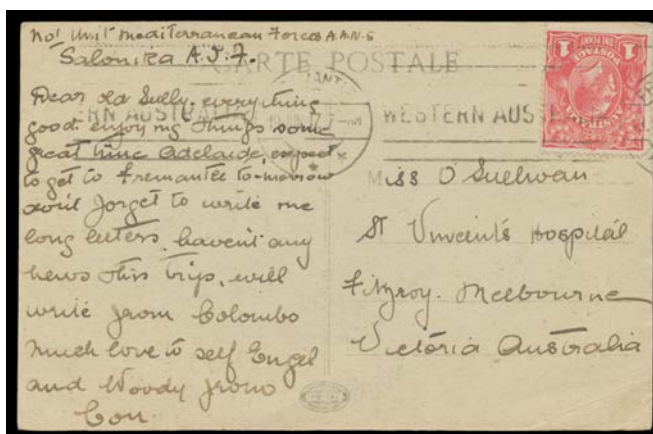
Est \$A

COMMONWEALTH OF AUSTRALIA - Other Pre-Decimals

Ex Lot 339

339 ** A B1 **1963-65 Navigators** 7/6d to £2 including *White Paper* 10/- & £1 all with 'SPECIMEN' Overprint, unmounted, Cat \$1100. *Chris Ceremuga Certificates* (2001). (8)

600

COMMONWEALTH OF AUSTRALIA - Military & Censor Mail

Lot 394

394 C A- **WORLD WAR I:** 1917 PPC of SS "Mooltan" to Melbourne with KGV 1d red tied by Fremantle machine cancel of 19JUN17, message headed "No 1 Unit Mediterranean Forces AANS/**Salonika AIF**" & written at sea by a nurse en route to Greece. The only such item we have seen. *Ex Tony Finlayson*: acquired at the *Prestige* auction of 14/11/2014 for \$506. [The British had requested Australia to send nurses to Salonika. The "Mooltan" departed Melbourne in June with 462 nurses aboard. The writer states "...some great time Adelaide, expect to get to Fremantle tomorrow...will write from Colombo..."]

450^T**BRITISH WEST INDIES**

We are pleased to offer the attractive collections of Bahamas and Bermuda formed by Russell Stern from Sydney.



Ex Lot 562

562 **/O **BERMUDA:** 1902-34 Caravels collection with the various issues mint & used plus shades, multiples, a few varieties, and 'SPECIMEN' Overprints x18 including 1906-10 set (ex ¼d) & 1910-25 New Design complete, also MCA ¼d complete sheet of 120 and an extensive annotated study of the 1d identified by Plate with numerous mostly used varieties, MCA complete left half-sheet of 60 & 'WAR TAX' half-sheet of 60 (12x5), generally fine to very fine. (600+)

300

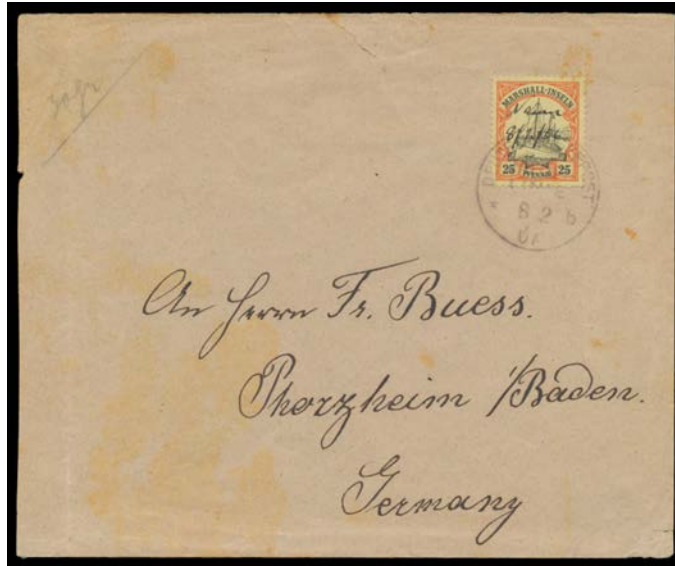
GERMAN COLONIES

611 ** A+ **MARSHALL ISLANDS - NAURU:** c.1908 (?) embossed 'KAISERL.DEUTSCHE POSTAGENTUR/[eagle]/NAURU/MARSHALL- INSELN' letter-seal, full unmounted o.g. Superb!

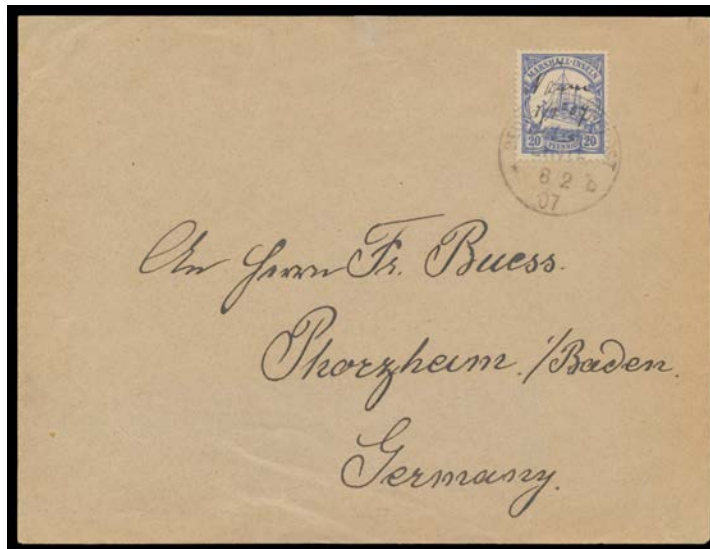
100^T

GERMAN COLONIES (continued)

Lot	Type	Grading	Description	Est \$A
-----	------	---------	-------------	---------

**Lot 612**

612	C	C	- 1907 philatelic cover with Marshalls 30pf & manuscript "Nauru/7 2 07", repaired tear at the top & some staining/toning.	
------------	---	---	---	--

350^T**Lot 613**

613	C	A-	- another similarly serviced but very fine philatelic cover of the same date with Marshalls 20pf - plausibly paying the double letter rate - a couple of tiny imperfections. <i>Ex John Darnell.</i>	600 ^T
614	C	A-	- 1909 commercial cover (front only) to Austria with 10pf & 20pf tied by two light but clear strikes of the Nauru cds, 'Nauru/(Marshall Ins.)' registration label with the number amended as was common practice.	300 ^T
615	C	A-	- 1909 correctly rated philatelic cover to Germany with 3pf x2 & 25pf tied by light but clear strikes of the Nauru cds, 'Nauru/(Marshall Ins.)' registration label with the number amended, 'PFORZHEIM' arrival b/s, some very minor toning on the reverse only.	250 ^T

GERMAN COLONIES (continued)

Lot Type Grading Description

Est \$A



Lot 616

- 616 PS A- - commercial usage of 10pf Postal Card to England with Nauru cds, message headed "SS *Ocean Queen* moored off Nauru (Pleasant Iland)" states "...ye sea off ye reef is too deep to anchor...wd be of little importce but for...large phosphate workings...sharks are a danger...Natives are rich & labourers have to be brought eg fr China (coolies) & ye Caroline Is kanakas..." Ex *Keith Buckingham & John Darnell*. [Illustrated by *Buckingham* at page 2]

350^T

Lot 617

- 617 C (A-) - 1910 cover with private 'Drucksache' (= printed matter) h/s in blue & solo franking of 3pf tied by fine Nauru cds, to Germany with Sydney transit backstamp & manuscript endorsement on the face "Received in/Ship Room without/contents/GM/7.11.10", ironed-out vertical fold. Ex *John Darnell*.

350^T

Lot 618

- 618 C A - 1910 cover to Nauru with Marshalls 5pf pair tied by two fine strikes of the 'DEUTSCHE SEEPOST/ JALUIT-/LINIE/1.7/10' cds used aboard the "Germania", Jaluit transit b/s of the next day & Nauru arrival b/s of 17.9/[10]. *Friedrich Steuer Certificate* (1995). [The "Germania" was en route to Hong Kong. The cover was offloaded at Jaluit to be put on the next southbound vessel]

350^T

GERMAN COLONIES (continued)

Lot Type Grading Description

Est \$A

**Lot 619**

619	PS	A-	- 1911 commercial usage of 5pf Postal Card to Germany with superb strike of the Nauru cds, the message signed "PH Kayser/Nauru/Marschall-Inseln" (with the archaic 'c' in 'Marschall' crossed-out) requests copies of two books on technical drawing. <i>Ex John Darnell.</i>	400 ^T
620	PS	A-	- 1913 5pf Postal Card with commemorative overprint '2. Oktober/1888***1913/...' on the reverse, locally addressed & CTO, <i>Bothe</i> guarantee handstamp on the reverse. [The overprint was for the 25th Anniversary of the German flag being raised in Nauru]	150 ^T
621	PS	A-	- 1913 5pf Postal Card to Berlin with very fine Nauru cds, message signed "HH Grimme" requests electrical catalogues & asks for a quote for a wholesale order. To whom did he expect to on-sell them!?	250 ^T

NAURU - Postal History**Lot 681**

681	C	A-	1927 Pflum cover to Pennsylvania "Per Air Mail/via Sydney/& San Francisco" with rare albeit philatelic combination franking of <i>Rough Paper Ships</i> 1d strip of 3 tied by 'NAURU/21SP26/CENTRAL/PACIFIC' cds plus United States 24c Airmail cancelled at San Francisco, 'PHILADELPHIA PA' arrival b/s. [During the 1920s, the United States allowed their own stamps to be affixed at overseas destinations to pay the US internal air mail of 8c 16c or 24c depending on how many sectors were to be flown. Even philatelic examples from any of the Pacific Islands are seldom seen and examples from Nauru are rare]	750 ^T
-----	---	----	---	------------------