

Lot Type Grading Description

Est \$A

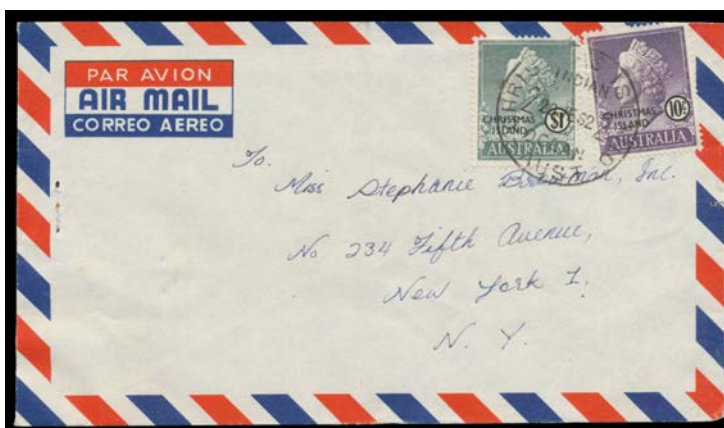
CHRISTMAS ISLAND



Lot 941

941 C B **1907** (Sept.4) postcard from Dublin, Ireland addressed to "Mrs Darling, Christmas Island, Straits Settlements" with double circle 'PENANG TO SINGAPORE/SE27/1907' marine sorter cds and 'CHRISTMAS ISLAND/OC6/1907/+' arrival cds (*Proud Type B*).

1,000^T



Lot 942

942 C A- **1962** commercial airmail cover to New York with rare franking of 1958 QEII Malaysian Currency 10c & \$1 tied by cds #2. [Rod Perry has advised he has recorded only one commercial cover with the \$1]

500^T