

Lot Type Grading Description

Est \$A

PAPUA - Flight Covers**Lot 1129**

1129	C		1930 (Mar 11) Port Moresby-Sydney-United States - see AAMC #P1a - with combination franking of Papua 'AIR MAIL' 6d + United States 5c Beacon pre-paying the trans-USA portion of the journey, Cat \$800. <i>Ex Ray Kelly</i> . [The AAMC states "15 covers reported to exist from Papua"]	500 ^T
1130	C		1931 (May 1) Salamaua-Port Moresby-New Zealand AAMC #P30 cover per Lionel Shoppee for <i>Papuan Airways</i> , Cat \$750. [Only 12 flown. The small mail connected at Port Moresby with the mailboat to Cairns (8 May cds); from Brisbane they were flown by ANA to Sydney (11 May) and then by sea to Christchurch]	250
1131	C		1931 (Sep 14) Salamaua-Samarai-New Zealand AAMC #P31 per <i>PH Moody</i> to connect with the mailboat for Australia and thence New Zealand, Cat \$650. <i>Ex Ray Kelly</i> .	250

**Lot 1132**

1132	C		- (Sep 24) Port Moresby-Samarai AAMC P32 per <i>PH Moody</i> on the inaugural flight, Cat \$900. <i>Ex Ray Kelly</i> . [Only 10 flown]	300
1133	C		- (Oct 1) Wau-Lae AAMC #P33 cover per <i>E Mustar</i> for <i>Guinea Airways</i> on the third flight to bear the company's cachet, Cat \$375.	150
1134	C		1936 (Mar 17) Port Moresby-Daru per "Kono" amphibian AAMC #P97, signed by the pilot "Russell Rogers", Cat \$700. [Only 12 flown. The purpose of the Second Archbold Expedition was to explore and collect specimens along the Fly River]	250
1135	C		- (Mar 28) Daru-Port Moresby per "Kono" AAMC #P98b, Cat \$500.	250
1136	C		- (Apr 16) Port Moresby-Daru per "Kono" AAMC #P100 cover, signed by the pilot "Russell Rogers", Cat \$500.	250
1137	C		1937 (Oct 11) Port Moresby-Lake Kutubu per <i>Guinea Airways</i> in a <i>Junkers W34</i> AAMC #P117, signed by the pilot "AA Koch", Cat \$600. [Only 17 flown. This was a delivery flight to the police camp then under construction]	250
1138	C		- (Oct 24-31) Lake Kutubu-Port Moresby AAMC #P121, signed by the pilot "AA Koch" & on the reverse by "Ivan Champion" the Officer in Charge, Cat \$600. [Only 17 flown]	250
1139	C		1938 (Jun 29-30) Port Moresby-Samarai-Losua-Port Moresby "boomerang cover" per <i>Stinson Reliant</i> (seaplane) AAMC #P136a, signed by the pilot "K Garden", Cat \$280. The emergency flight to pick up a sick man who needed urgent transport to Port Moresby hospital, was the first flight to the remote, sparsely populated Trobriand Islands]	200
1140	C		- (3 Oct) Buna Bay-Port Moresby per <i>Ken Garden</i> in a <i>Stinson Reliant</i> AAMC #P139, Cat \$325, [Bad weather forced an unscheduled landing at Buna Bay. <i>OJ Atkinson</i> , the Resident Magistrate at Buna, took the opportunity to send a few covers, that were cancelled on arrival]	200

PAPUA - Flight Covers (continued)

Lot Type Grading Description

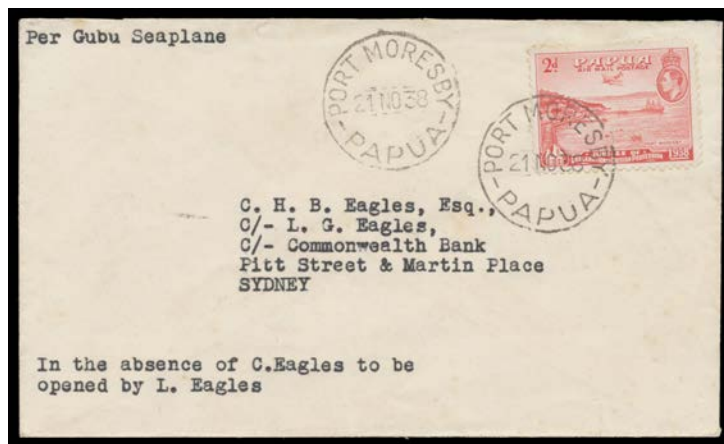
Est \$A



Lot 1141

1141 C - (Oct 14) Port Moresby-Cairns per "Guba II" AAMC #P140, Cat \$1750. [It is believed that only 6 covers were flown]

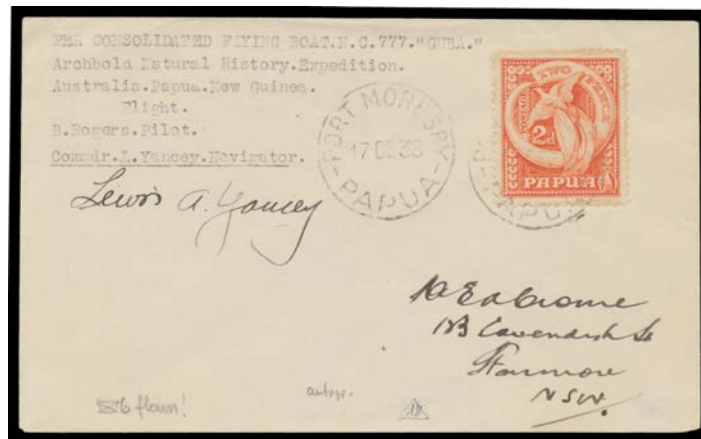
750



Lot 1142

1142 C - (Nov 21) Port Moresby-Sydney per "Guba II" AAMC #P140a, Cat \$1750. [Only 6 flown. The flight was necessary because of the requirement for repairs to the automatic pilot]

750



Lot 1143

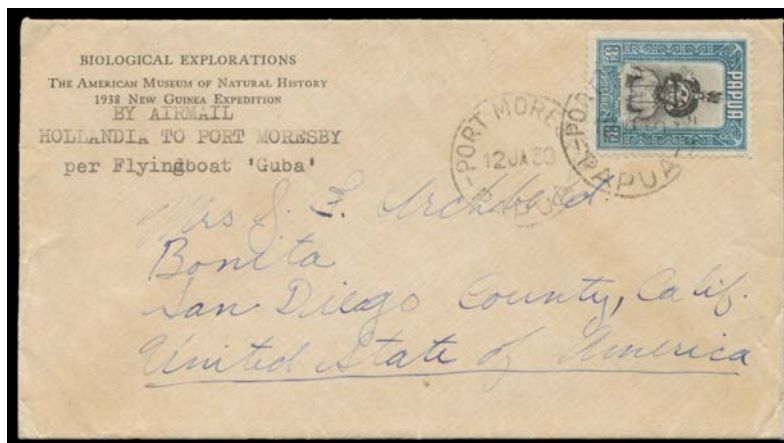
1143 C - (Dec 14-17) Melbourne-Port Moresby per "Guba II" AAMC #P141, signed by the navigator "Lewis A Yancey", Cat \$1750.

750

PAPUA - Flight Covers (continued)

Lot Type Grading Description

Est \$A



Lot 1144

1144 C 1939 (12 Jan) Hollandia-Port Moresby per "Guba II" AAMC #P141a, addressed by *Richard Archbold* to his wife in California, Cat \$1750. *Ex Ray KJelly*. [Illustrated in the AAMC 8th Edition at page 246]

750



Lot 1145

1145 CX - (May-July) *Archbold Expedition* per "Guba II" AAMC P144a over-size cover with stamps of the various countries/colonies visited on the return to the United States and signed by "*Richard Archbold*", "*Richard Rogers*" & members of the crew, self-addressed by *Harry Ramm*, Cat \$1500. [The flight departed from Hollandia and flew to New York via Port Moresby, Sydney, Port Hedland, Batavia, Cocos Islands (*Cable & Wireless* backstamp), Diego Garcia, Seychelles, Mombassa, Kisimu and Coquilhatville (Belgian Congo)]

500

1146 C 1940 (4 Jan) Gailala Police Camp-Port Moresby AAMC P150 cover flown and signed by Tommy O'Dea for Guinea Airways. This was the first airmail flight from the camp, *Ex Ray Kelly*, Cat \$400.

150