

Lot Type Grading Description

Est \$A

PAPUA NEW GUINEA



Ex Lot 1147

1147	**	A	1952-2013 Issues apparently complete in three large albums with all <i>setenants</i> & M/Ss, 1990s Emergency Surcharges and the Postal Charges (ex SG D1), unmounted, STC £5000+. (Qty)	1,200
1148	**/*B		Seven Seas hingeless album with 1966-86 issues apparently complete, plus an album of duplicates on <i>Hagners</i> with some useful pre-decimal issues (mostly mounted), booklets & 'STAMP DUTY' Overprints, unmounted. (100s)	250



Ex Lot 1149

1149	**/*O		Ex-dealer's stock with mint issues to 2010 including M/Ss, noted 10/- Map ** and CTO block of 4, £1 Fisherman block of 4 ** plus 'SPECIMEN' Overprint, 1994 Emergency Surcharges set **, etc, much unmounted. Retail stated to be \$5500+. (100s)	600
------	-------	--	---	-----



Ex Lot 1150

1150	**	A	1952-94 Issues complete as per Seven Seas hingeless pages including 'SPECIMEN' Overprints, 1985 Ceremonial Structures unissued small format set, 1994 Emergency Surcharges plus '10t' on 35t Birds with the <i>Overprint Slightly Misplaced</i> , and Postal Charges (ex SG D1), unmounted. (100s)	1,250
1151	**	A A1	1985 Ceremonial Structures <i>Smaller Format & without 't' after the Value '10'</i> (instead of 15t) to '60', unmounted. Unissued: see note in <i>Gibbons</i> after SG 499. With a normal set for comparison. [This is a weird situation. The unissued stamps were printed by Leigh Marden in Melbourne while the issued stamps were printed by the Spanish firm <i>Heraclio Fournier</i>] (8)	250

PAPUA NEW GUINEA (continued)

Lot Type Grading Description

Est \$A



Lot 1152

1152 ** A A1 **1987-88 Ships** Lithographed on Ordinary Paper Perf 13½ 45t "Eendracht", 70t "Neva", 80t "San Pedrico" & K2 "Merrie England" (with Turquoise Border), unmounted. Very scarce.

These stamps were not "officially issued" but were sold by PNG's New York agent "in error": see footnote below SG 557. Shades of New Zealand's *Kapa Haka* debacle! For the issued stamps - printed in photogravure on "granite" paper Perf 11½ - designs for the 45t & 70t were transposed; no 80t was issued, the design being used for the 35t value; and the K2 was issued with a *Pink Border*. Tim Rybak's & John McNabb's sets sold for \$2415 & \$1380 respectively.

1,000



Lot 1153

1153 ** A B1 **1994 Surcharges** "K1.20" on 40t "L'Astrolabe" with the *Surcharge Double* SG 709var, unmounted. *Chris Ceremuga Certificate* (2002) states "Only one pane of 25 was discovered". Absent from *John McNabb's* exceptional collection.

500



Lot 1154

1154 ** A B1 **1994 Emergency Surcharges** 5t on 35t Musical Bow with *Triple Overprint (Two Inverted)* corner example, 10t on 35t Cassowary/Kiwi with the *Surcharge Slightly Misplaced*, and 21t on 80t Shells with *Surcharge in Grey instead of Black* block of 4, unmounted. Unlisted by *Gibbons*. *Chris Ceremuga Certificates* (2002) for the first & last items.

500

PAPUA NEW GUINEA (continued)

Lot Type Grading Description

Est \$A



Lot 1155

1155 ** A A1 - 5t on 35t Musical Bow complete sheet of 50 (5x10), several units with *Defective Overprints* including [R5/5] with 't' Largely Omitted & [R4/5] with '5t' Almost Totally Omitted SG 731a, unmounted. The major variety is listed by *Gibbons* but unpriced. *Chris Ceremuga Certificate* (2002) states "The Missing 5t occurred only in part of the printing". [Absent from *John McNabb's* exceptional collection]

1,000



Lot 1156

1156 V A B1 - 10t on 35t Casowary & Kiwi SG 733 with the *Overprint Double* (& appearing as '100t'), light contemporary rubber cds. Unlisted by *Gibbons*. *Chris Ceremuga Certificate* (2002) states "Only one sheet (or part only) printed & all used up on mail. This is currently the only example recorded."

500



Lot 1157

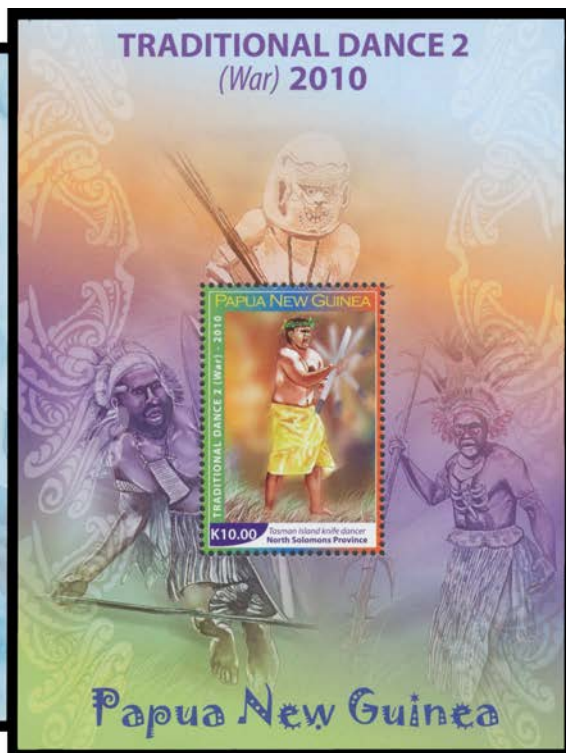
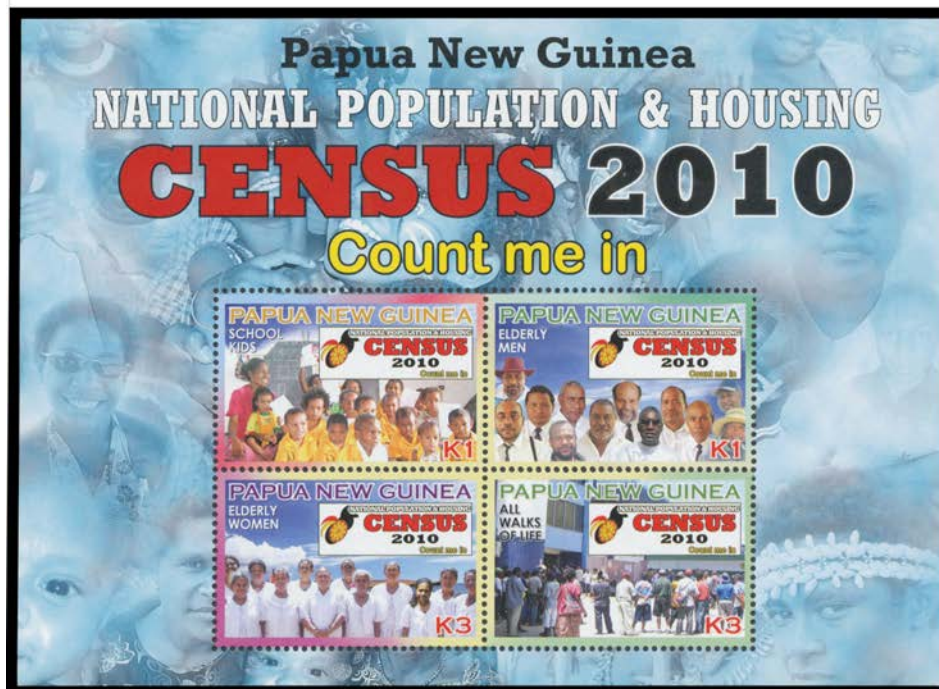
1157 ** A A1 - 50t on 35t Headdress with the *Overprint Inverted* SG 736a, unmounted, Cat £600. *Chris Ceremuga Certificate* (2002) states "Only one sheet of 50 believed printed".

500

PAPUA NEW GUINEA (continued)

Lot Type Grading Description

Est \$A



Ex Lot 1158

1158	**	A	1995-2010 Issues virtually complete as per Seven Seas hingeless album with all setenant pairs & M/Ss, missing just a few minor issues, unmounted. Obscene face value. Thematics galore! (100s)	500
1159	**	A A1	1995 Beatification 21t+90t setenant pair with 'K1.00' Omitted from the 90t Pope SG 746a, unmounted, Cat £120.	100



Ex Lot 1160

1160	**	A A1	1995 Tourism 21t SG 747a plus 45t 60t & 90t setenant pairs, unmounted. Unlisted by Gibbons. With a normal set of pairs for comparison. Very scarce: apart from the 21t, these stamps were issued only with higher surcharged values. (8 pairs)	750
1161	**	A	- '65t' on 60t two se-tenant imprint blocks of 12 (4x3) each with one unit '65t' Omitted SG 751b, plus 1995 Surcharges on Fish SG 759-761 sheets of 50, unmounted, Cat £175+. (5 items)	75
1162	**	A	1995 Emergency Surcharges on Birds of Paradise '21t' Thin Type on '45t', '45T', '90t' & '90T' SG 755 755a 756 & 756a, & '21t' Thick Type on '45T' & '90t' SG 757 & 756b complete sheets of 50 (10x5), unmounted, Cat £1300+-. A very scarce group of sheets. (6 sheets)	500

PAPUA NEW GUINEA (continued)

Lot Type Grading Description

Est \$A



Ex Lot 1163

1163	CL/CO	A	FIRST DAY COVERS: 2007 (Aug)-2010 Issues apparently complete on unaddressed official FDCs - mostly long or oversize covers - with high thematic content & significant face value; also 1952 Pictorials set on a single long FDC registered at Port Moresby, and 1995 Surcharges on Fish SG 759-761 on two plain covers with Port Moresby FDI cds of 20JUN1995 or 19.05.95 (the day before the official issue, but the date that was originally advised). We expect that the recent covers are extremely scarce. (130 approx)	200
1164	C	B	POSTAL HISTORY: Australian <i>Imperial Reply Coupon</i> 3d amended by hand to "4d" in red with 'POSTAL DEPT C3/2MR53/PNG' relief cds, central fold. Very scarce.	100
1165	C	B	- 1959 commercial airmail cover to Germany with scarce franking of 3½d black Headdress x2 & 7d Plymill x3 tied by 'RABAUL' cds, minor blemishes. The rate was 2/3d so the cover was overpaid 1d.	200†



Ex Lot 1166

1166	**O	A	REVENUES: 1975 New Currency set to 'K20' plus a few shades, 1984 Surcharges twelve different to 'K10' on 5t, 1990s 'STAMP DUTY' Surcharges x19 of the 20 different (missing only the '20t' on 15t Aeroplane) plus the bogus 'K10.00' on 1t Hibiscus x2 (one inverted), 1994-95 'DEPARTURE TAX' 'K15' on 7t Kingfisher x3 different (used), plus a few extras & a few used, unmounted. Very scarce & colourful group. [With a file of letters & articles regarding the legitimacy of the various decimal surcharges] (79)	1,000
------	-----	---	---	-------



Ex Lot 1167

1167	**	A B1	- 1990s 'STAMP DUTY' Surcharges complete "set" of the 20 different plus the bogus 'K10.00' on 1t Hibiscus x2 (one inverted), unmounted. Very scarce & colourful group. [Of the '20t' on 15t Aeroplane & '10t' on 70t Sandpiper, only 4 & about 12 examples respectively have been recorded] (22)	1,000
------	----	------	--	-------

PAPUA NEW GUINEA (continued)

Lot Type Grading Description

Est \$A



Lot 1168

1168 ** A A1 - 1990s 'STAMP DUTY' Surcharges '10t' on 70t Sandpiper, unmounted. *Chris Ceremuga Certificate* (2002). [Only about 12 examples have been recorded]

200



Lot 1169

1169 ** A A1 - 1990s 'STAMP DUTY' Surcharges '10t' on 30t Headdress marginal vertical pair with *Different Size Overprints* (20mm & 18mm wide respectively) & the upper unit with *Heavier Font '10t'*, unmounted. *Chris Ceremuga Certificate* (2002). The only such *setenant* pair we have seen.

100