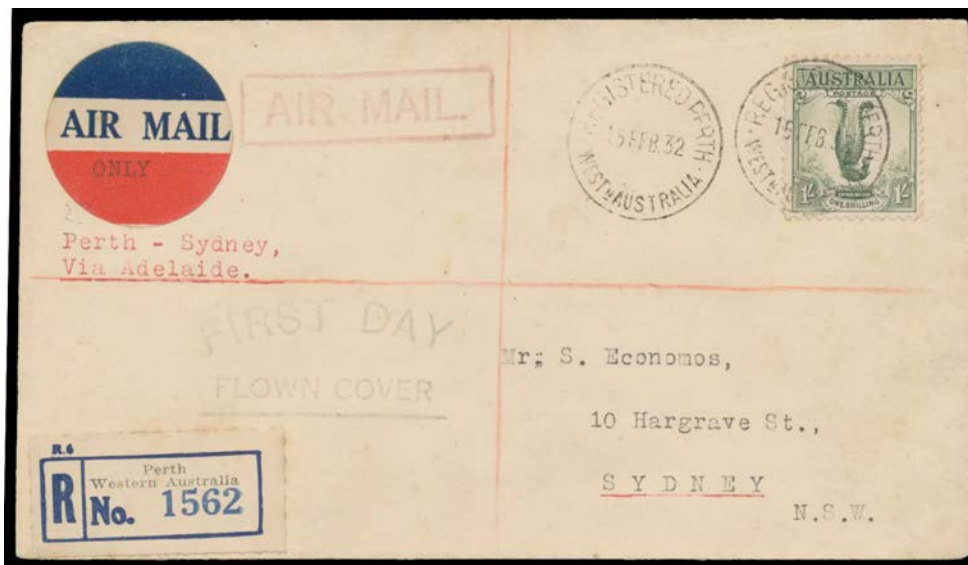


Lot Type Grading Description

Est \$A

1932 LARGE LYREBIRD



Lot 437

437 C

A

THE STANDARD ISSUE: 1/- green tied by 'REGISTERED PERTH/15FEB32/WESTN AUSTRALIA' cds to plain Mitchell First Day Cover to NSW with 'FIRST DAY/FLOWN COVER' & boxed 'AIR MAIL.' cachets, blue & black/white registration label, Sydney arrival b/s of 19FE32 BW #145y, Cat \$375.

According to "Australian First Day Covers" by Moore, Woolley & Pauer (2009) at page 71, "S Mitchell" was the English name adopted by the immigrant Greek tailor S Hadjinihalakis.

200



Ex Lot 438

438 **

A B1

- Two marginal blocks of 4 in slightly different colours, one overprinted 'OS', unmounted, Cat \$700+. (2 blocks)

400

1932 LARGE LYREBIRD (continued)

Lot Type Grading Description

Est \$A



Lot 439

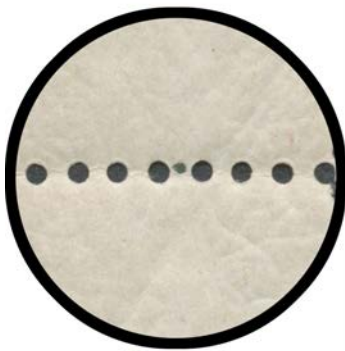
439

*

(B)

- 1/- green marginal example from the top of the sheet *Imperforate at Top* BW #145ba, repaired tear from upper right-hand perfs to just past the first 'A' of 'AUSTRALIA' but of fine appearance, Cat \$22,500. A great item for a Birds collector. The ACSC states that two mint examples, one "with roughly torn upper margin", and a similarly separated used stamp, are recorded. It is clear that the finder was not a collector! (which, in one sense, adds to the appeal of this item).

5,000



Lot 440

440

**

A/B C1

- 1/- yellowish green marginal block of 4 from the left of the sheet with a single "Plate Dot" between the perforations in the margin BW #145z, horizontal crease across the base of the lower units, unmounted, Cat \$1750 (or \$600+ as four single stamps). The ACSC states there were eight plates: "A single plate dot appears in the left selvedge opposite rows 4 and 5...the plates must have been differentiated by markings which were invariably trimmed off the issued sheets". In respect of the dot, *Arthur Gray* stated "since this would not serve to differentiate between all eight plates, it is now thought that the dots are perforation pinning points". This re-assessment of the situation raises the question "Will collectors now pay a significant premium for these items?"

400

1932 LARGE LYREBIRD (continued)

Lot Type Grading Description

Est \$A



Lot 441

441 ** A+ C1 - 1/- green marginal block of 4 from the right of the sheet with a single "Plate Dot" between the perforations in the margin BW #145z (var), unmounted, Cat \$1750+ (or \$400+ as four single stamps). Superb! The ACSC refers to only the dot in the left-hand margin.

400



Lot 442

442 **/* A+/B - 1/- John Ash Imprint blocks of 4 BW #145za in green (mounted), yellowish green (unmounted & superb) and an intermediate shade (aged gum but unmounted), Cat \$1725+.

600

1932 LARGE LYREBIRD (continued)

Lot Type Grading Description

Est \$A



Lot 443

443 C A- - 1/- green pair (gum-stained perfs) plus Third Wmk Kangaroos 9d violet two pairs tied to complete c.1933 parcels label by a largely very fine strike of the huge rubber 'PARCELS OFFICE/GPO/MELBOURNE' undated cancellation (deteriorated - "scaloped" - frame), Cat \$350 for a single 9d on cover. The rate was for between 8 & 11 pounds to an adjoining State, or for between 5 & 8 pounds to a non-contiguous State, New Guinea or Papua. [NB: In the period prior to 1/3/1933, there was no 5/- parcel rate. The 16/12/1929 rates for between 5 & 11 pounds were inadvertently copied by *Richard Breckon* from the rates as at 1/3/1933]

250



Lot 444

444 V A+ C1 **OVERPRINTED 'OS'**: 1/- green block of 4, CTO with central 23mm 'GPO/19DE32/MELBOURNE' cds and full unmounted o.g., Cat \$200+-. Superb!

100



Lot 445

445 V A B1 - 1/- green marginal block of 4 from the left of the sheet with a single "Plate Dot" between the perforations in the margin BW #145(OS)z, CTO but with a non-GPO Victorian cds, large-part o.g. with the lower units being unmounted, Cat \$1250 mounted mint (or \$200+ as four single stamps). [See the comments at Lot 440]

200

1932 LARGE LYREBIRD (continued)

Lot Type Grading Description

Est \$A

**Lot 446**

446 */** A+ C1 - 1/- green *John Ash Imprint* block of 4 BW #145(OS)za, very lightly mounted, the lower units unmounted, Cat \$475+ (mounted). Superb!

300

**Lot 447**

447 P A- A1 **CHAMBON "ESSAYS"**: 1937 1/- in deep red BW #145PP(1)A, exceptional centring, a couple of very minor marks on the reverse, lightly mounted, Cat \$1000.

The ACSC states that the so-called "*Chambon Essays*" - with 'AUSTRALIA' and 'ONE SHILLING' scored through on the die - were printed by France's *Stamp Printing Works* on their *Chambon* printing presses, "apparently in connection with efforts of the French authorities to sell *Chambon* intaglio printing equipment to the *Note Printing Branch*".

400

1932 LARGE LYREBIRD (continued)

Lot	Type	Grading	Description	Est \$A
-----	------	---------	-------------	---------

**Lot 448**

448	P	A+ B1	- 1937 1/- in deep bright blue BW #145PP(1)B marginal example from the top of the sheet, very well centred, unmounted, Cat \$2000. Gorgeous & superb! Derived from the sheet of 50 discovered only in 2013: only two singles have been offered, selling at the <i>Prestige Philately</i> auctions of 7/2/2014 and 2/5/2014 for \$1840 and \$1495 respectively.	
------------	---	-------	--	--

The ACSC ambiguously states "...A sheet of 50 in each colour appeared for sale in Europe". In fact, single sheets of 50 in red and in blue were discovered. The green is exceedingly rare: we have never seen an example but we know that a few exist. The block of 4 in "black" was discovered only in 2014.

1,000

**Lot 449**

449	E	A+ A1	- 1937 1/- in black-brown BW #145PP(1)D, exceptional centring, unmounted, Cat \$5000. Superb! Derived from the block of 4 discovered only in 2014 and subsequently split. To date, no other examples have been recorded. [When originally offered for sale in Europe, and subsequently (including in the ACSC), the shade has been erroneously noted as "black". Close examination shows that it is in a very dark shade of brown]	
------------	---	-------	--	--

3,500