

Lot Type Grading Description

Est \$A

**GREAT BRITAIN - Topographicals by Region/Town**



**Ex Lot 560**

560 C

A/A+

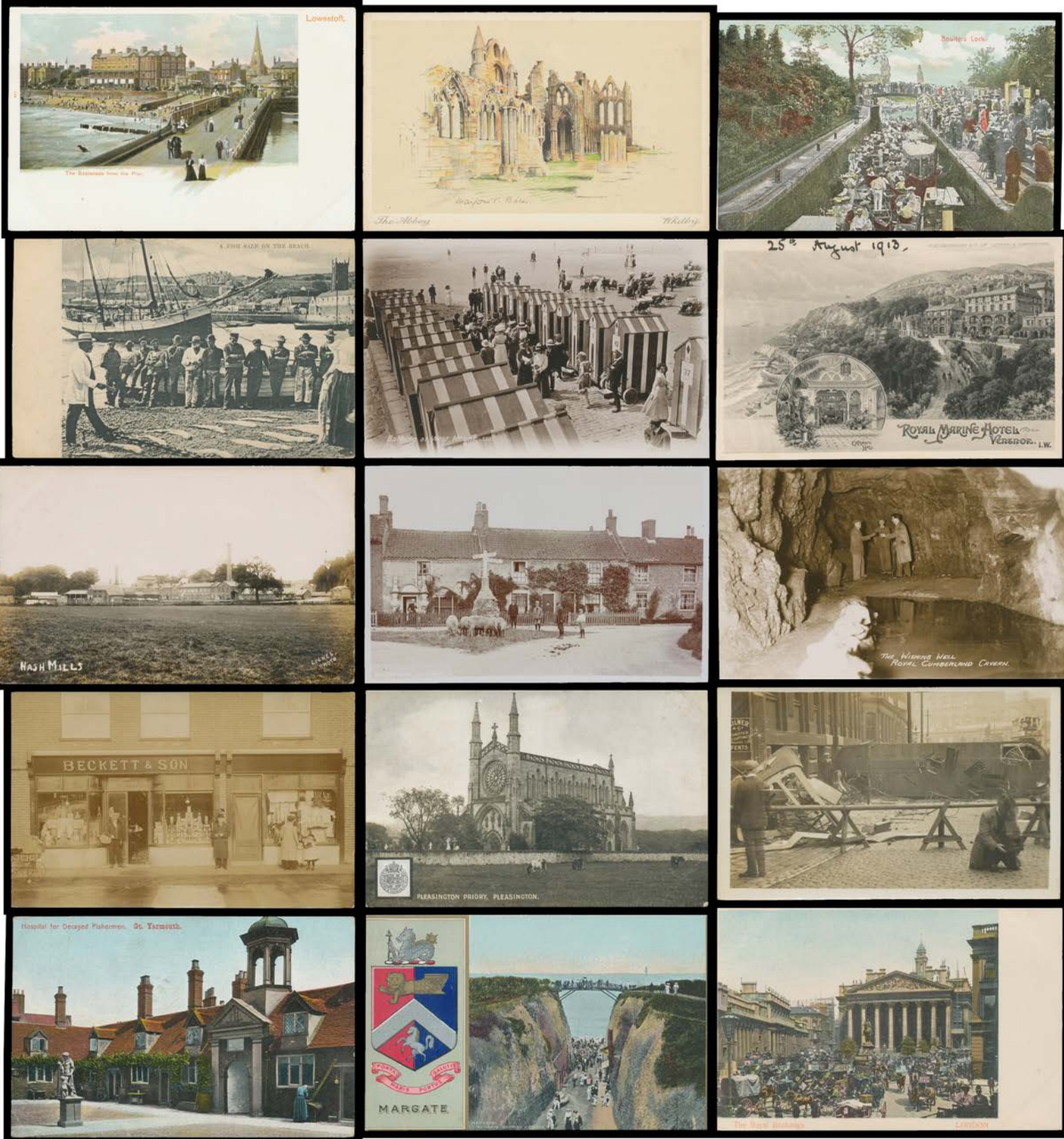
Outstanding quality group of early Undivided Backs mostly *Valentine's* including Liverpool x11, Wolverhampton x9, "Land of Scott" x15, Loch Katrine/Trossachs x12, "Cornish Scenery" x6 & "Cathedrals of England" x6, also *Frith* Views of Boston x11, & a few others, very fine to superb unused. An exceptional lot for the connoisseur. *Ex Keith Harrison. (86)*

850<sup>T</sup>

GREAT BRITAIN - Topographicals by Region/Town (continued)

Lot Type Grading Description

Est \$A



Ex Lot 561

561 C

A marvellous collection from all over England - no London - including good selections from Cornwall, Lakes District, Thames Valley, Seaside Resorts, Isle of Wight etc, numerous Villages noted, some Undivided Backs, good range of beautiful artist cards, real photos including unidentified locations, many superb Rapco & other publishers including Railway Companies, etc, plus a few Ireland, a high proportion are unused, generally fine to very fine+. Ex Keith Harrison.(100s)

1,000<sup>T</sup>

GREAT BRITAIN - Topographicals by Region/Town (continued)

Lot Type Grading Description

Est \$A

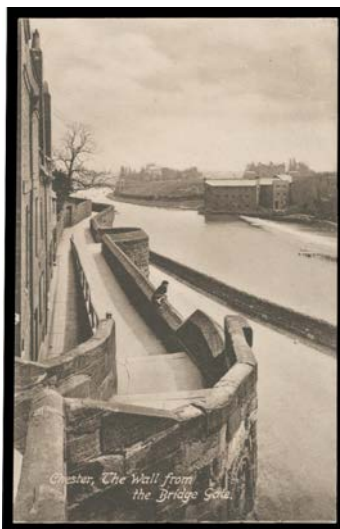


Ex Lot 562

562 C

LONDON: Box of mostly topographicals including many unusual streetscapes, lots of activity including many with horsedrawn & motorised vehicles, some Undivided Backs & other early cards, groups of River Thames, Westminster & Crystal Palace, a high proportion are unused including many superb Excellent Series cards, generally fine to very fine+. Ex Keith Harrison.(200 approx)

300<sup>T</sup>



Ex Lot 563

563 C

CHESHIRE: Old album of Chester cards including ancient & Tudor buildings, some lovely real photos including multi-views x3 & some artist cards, generally fine to very fine used or unused. Ex Derek Pocock. (114)

250



Ex Lot 564

564 C

CORNWALL: Collection x100 approximately including St Michael's Mount group x36, Land's End x18, other towns, Briggs & Co watercolours by Leonard Richmond x6, Peacock Pictorette watercolours x15, etc, also some Devon, castles, & a few others; generally fine to very fine. (140 approx)

250

**GREAT BRITAIN - Topographicals by Region/Town (continued)**

Lot Type Grading Description

Est \$A



**Ex Lot 565**

**565** C **SCOTLAND:** Mostly unused topographicals including *JWB Commercial Series* x19, *Rapco "Up the Clyde"* set of 6, *Milton Glazette Tartan Borders* set of 12 & *L&NW Railway "Scotland"* set of 6, etc, a few useful postmarks, generally fine to very fine & most of those mentioned are superb. *Ex Keith Harrison.*(70 approx)

250<sup>T</sup>



**Ex Lot 566**

**566** C **WALES:** Fascinating collection of mostly topographicals - no Cardiff or Pontefract - with lots of variety including an excellent group of multi-views in various styles x27, *Peacock Brand* beautiful multicoloured cards x7, *Railway Company* cards x20, *real photo types* x30+, a few lovely artist cards, etc, some Welsh postmark interest, many unused, generally fine to very fine. *Ex Keith Harrison.*(140 approx)

500<sup>T</sup>



**Ex Lot 567**

**567** C **OFFSHORE ISLANDS:** Mounted collection with strength in Jersey, Guernsey, Isle of Man and Isle of Wight but many other islands noted including Sark, Scilly Isles, Lundy & Scottish Islands, many better views/subjects, condition variable but generally fine to very fine. *Ex Bronte Watts.* [This collection includes some modern tourism cards that are not included in the count or valuation] (110 approx)

250

**GREAT BRITAIN - Topographicals by Region/Town (continued)**

Lot Type Grading Description

Est \$A



**Ex Lot 568**

**568** C - Album with a rather scattered collection of cards with some better subjects but the strength is in the postmarks including **Jersey** 1907 'ST MARTINS', 1905 'ST MARYS' & 1905 'FIVE-OAKS', **Guernsey** 1931 'GUERNSEY (ST PETERS PORT)' & 1906 from Malmesbury to Sierra Leone!, **Isle of Man** 1919 'LAXEY' & 1906 'PORT-SODERICK SO', **Scillys** 1905 'SCILLY' & 1935 'ST MARYS', **Isle of Wight** 1907 'BEMBRIDGE', 1906 'FRESHWATER-BAY', 1930 'SANDOWN', 1910 'SHANKLIN SO', 1907 'TOTLAND-BAY' & 1908 'YARMOUTH RSO', **Scottish Islands** 1905 'CORRIE-ARRAN/=453=', 1908 'LIDDERY-LAMLASH' & 'LAMLASH/=214=' (both on Arran), 1937 'TOBERMORY/ISLE OF MULL' (on KEVIII 1½d) & 1935 'STORNOWAY/ISLE OF LEWIS' (on 1d Jubilee), etc, also **Ireland** 1912 'DERRYBEG/LETTERKENNY', 1907 'EXHIBITION BO DUBLIN' (artist card "Concert Hall and Restaurant") & 1906 'SCHULL/SKIBBEREEN', etc, also some covers & 1912 'PANORAMIC LETTER CARD/RYPDE' - removed from a perforated pad! - to Australia, condition variable. A very interesting lot. *Ex "Cartophile"*. **(125 items)** 500

**569** C - **CHANNEL ISLANDS:** Mostly unused topographicals including *Welch & Sons (Portsmouth) Brown & White* x19 & *Picture Frames* x7 and *FF Chromotint* x6, one of Herm (creased), generally fine to very fine & many are superb. *Ex Keith Harrison*. **(53)** 150<sup>T</sup>



**Ex Lot 570**

**570** C - **ISLE OF MAN:** Collection of mostly topographical cards including a couple of multi-views, mostly by *Valentine's Rapco & Tuck's* but also local producers *Hough*, *Norris Meyer Press* and *Webb's Lounge*, generic seaside humour cards inscribed "Douglas" or "Isle of Man" x9, postmark interest including diamond 'SNAEFELL SUMMIT/SE12/10' x2, many unused including *Yn Kaart Post Manninagh* types x11 (mostly superb) and *L&N Railway "The Isle of Man"* set of 6, generally fine to very fine. *Ex Keith Harrison*. **(62)** 350<sup>T</sup>