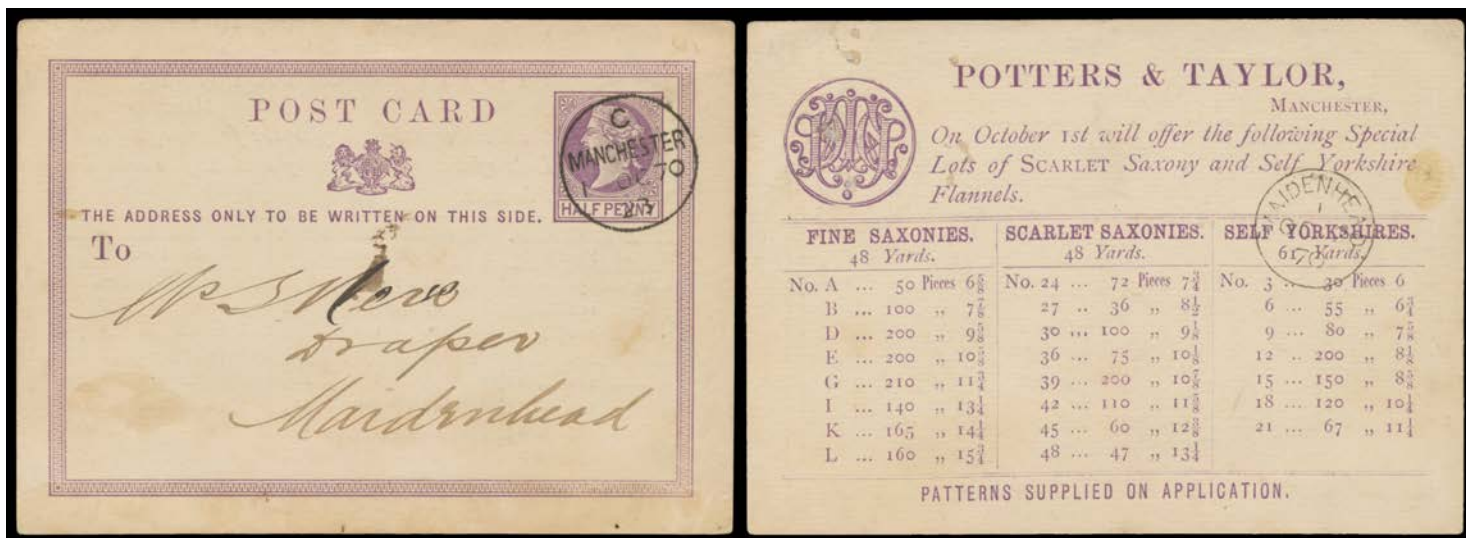


Lot Type Grading Description

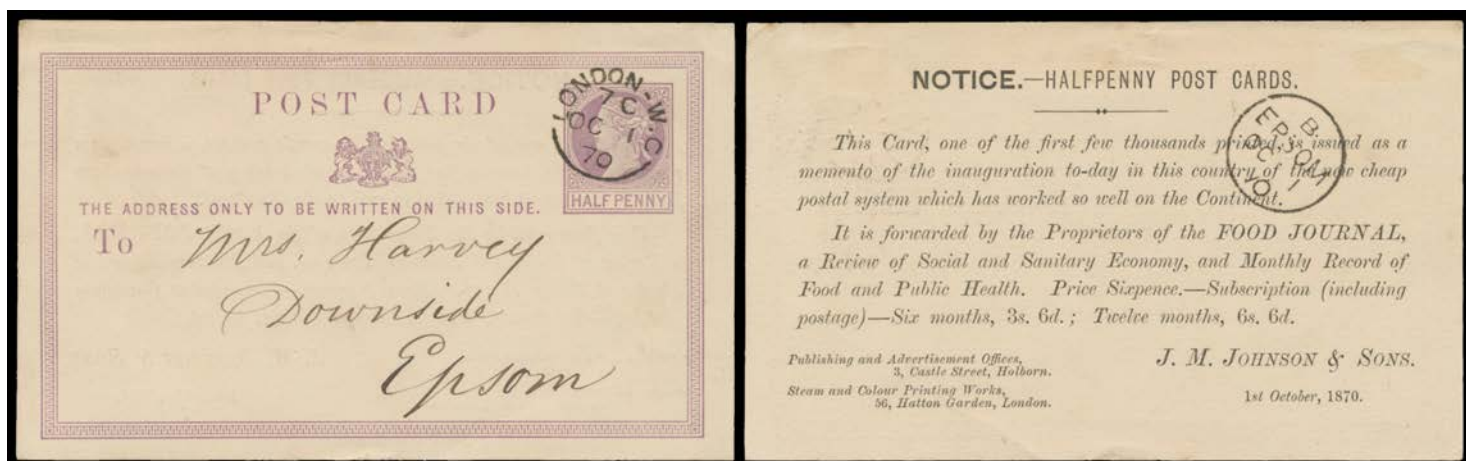
Est \$A

GREAT BRITAIN - Postal Stationery Postal Cards

The world's first Postal Card was issued in Austria on 1st October 1869. Great Britain "joined the club" exactly one year later.

**Lot 571**

571 PS B 1870 First Issue Larger Size (122x89mm) 1/2d lilac with printed advice for *Potters & Taylor (Flannels)* advertising "Special Lots of Scarlet Saxony and Self Yorkshire Flannels", very fine 'C / MANCHESTER / 10C / 70 / 23' datestamp & equally fine 'MAIDENHEAD / OC2 / 70' arrival backstamp, minor blemishes. **A rare First Day Cover.** Ex Keith Harrison.

750^T**Lot 572**

572 PS A+ - Smaller Size (122x75mm) 1/2d lilac with printed advice for *JM Johnson & Sons "Food Journal"* stating "This Card is issued as a memento of the inauguration to-day in this country of the new cheap postal system which has worked so well on the Continent...", sensational unframed 'LONDON-WC / 7C / 10C / 170' datestamp & equally fine 'B / EPSOM / OC1 / 70' arrival b/s on the same day. Superb! Ex Keith Harrison. RPSofL Certificate (not present).

As good a **First Day Cover** as one could imagine, of outstanding quality. Alan Huggins (1970) at page 59 states: "These cards were made available in sheets...to enable printed matter to be added to the back in time for the first day of issue".

1,000^T

GREAT BRITAIN - Postal Stationery Postal Cards (continued)

Lot Type Grading Description

Est \$A



Lot 573

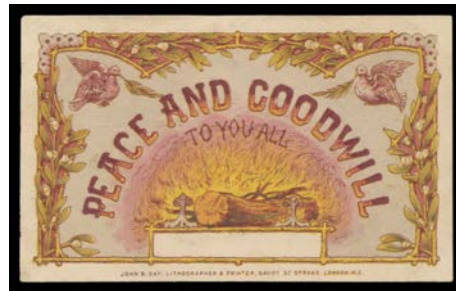
- 573 PS (B) - Larger Size ½d lilac with 'PICTS' illustration identifying the artist "ECL/15 Gr/James/Street/WC" in brown on the reverse, small closed tear at the base & minor blemishes, unused. *Ex Keith Harrison*. [The Printed Matter Regulations did not preclude pictures on the "message"-side. In the *Victoria & Albert Museum*, there is an identical used card dated OC20/70. This must therefore be a contender for **the earliest pictorial postcard from Great Britain**]

In about 1868, *Ernest Claude Lee* & a small circle of friends founded a society called "Picts & Goths". We expect the illustration is caricatures of Lee at the table (smoking) & other members, including a cellist & an inebriate.

500^T

Lot 574

- 574 PS B - Smaller Size ½d lilac with 'GOTH' woodcut illustration of a Bacchanale dated 'March 8 1871' in black on the reverse, minor blemishes, unused. *Ex Keith Harrison*.

500^T

Lot 575

- 575 PS B - Smaller Size ½d lilac with chromolithographed illustration 'PEACE AND GOODWILL/TO YOU ALL/[Yule Log]' & 'JOHN S DAY...' Imprint at the base, a few blemishes on the address side, addressed but otherwise unused. *Ex Keith Harrison*.

This & the next two lots are from the first-ever series of mass-produced Christmas cards, printed in 1871 by *John S Day* of London. They are also the earliest known postcards with multi-colour illustrations.

500^T

Lot 576

- 576 C A- - ditto, 'COMPLIMENTS OF THE SEASON' & Poem, similarly addressed but unused. *Ex Keith Harrison*.

500^T

GREAT BRITAIN - Postal Stationery Postal Cards (continued)

Lot Type Grading Description Est \$A



Lot 577

577 C B - ditto, 'A/MERRY/Christmas/AND/A HAPPY NEW YEAR', postally used to Cornwall with London duplex cancel of JA1/72, a bit soiled on the address side. Ex Keith Harrison. [Plus a facsimile of a fourth design] 500^T



Ex Lot 578

578 PS A/A- - Larger Size 1/2 lilac with printed advice 'SELF HELP FOR THE POOR', unused; Smaller Size with decorative advices for Glyn & Co (used 1872) & Union Bank of Scotland (used 1874), illustrated advertisement for Gooding's Patent Cork Draw-er (unused) & illustrated advertisement in red & green for Jewsbury & Brown's Oriental Toothpaste (unused); very fine & desirable group. Ex Keith Harrison. (5) 300^T

579 PS A+/A 1875 Second Issue Without 'To' 1/2 lilac with illustrated advices for Andersons & Thorburn Woollen Manufacturers (Manchester) & William Cumming & Co (Huddersfield) postally used in 1876 or 1877 respectively. Ex Keith Harrison. 100^T



Ex Lot 580

580 PS A-/A+ 1878 Halfpenny Brown Thin Stock x4 with advertisements for Aylesbury Dairy 'Humanized Milk the timely use of which has constantly Saved Life...' (superb unused), Bedford Pantechnicon Co (Railway illustration, superb used) & two others (used), and Stout Stock x3 with illustrated advertisements for Herbert Fitch & Co Stationers (London), Patent Borax Works (Birmingham) and Cassell & Co's Magazines (London), all postally used & fine to very fine. Ex Keith Harrison. (7) 300^T

GREAT BRITAIN - Postal Stationery Postal Cards (continued)

Lot Type Grading Description

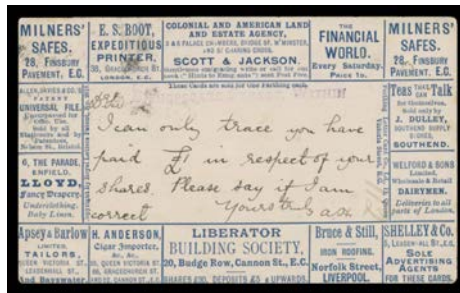
Est \$A



Lot 581

581 PS B - **Stout Stock** with illustrated 'THE POSTCARD/The Smallest Monthly Journal in the World' issue No 3 dated May 1893 with advertisements for **Sozodont Toothpaste** and **Perry Davis's Pain Killer**, minor damage at the base, used with superb 'WEST-NORWOOD' arrival datestamp. Rare. *Ex Keith Harrison*. [Issue No 1 was illustrated by *Frank Staff* (1966) who stated no other issues had been recorded]

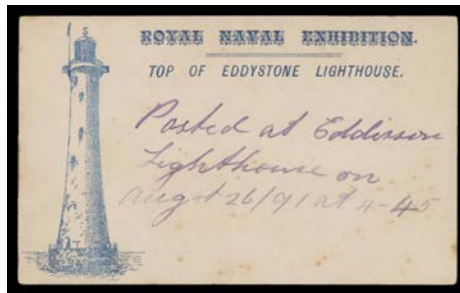
100^T



Lot 582

582 PS A- - **Stout Stock** for **Farthing Letter Card Co (London)** with 14 tiny advertisements including for Cigars & Tea, small closed spike-hole, used London to Bath in 1889. Rare, especially used. *Ex Keith Harrison*. [Such half-price schemes were trialed in many countries. In this case, the customer paid only ¼d per card & the promoters relied on advertisers to pay the bills. It didn't take long for postal authorities to realise that such schemes threatened their postal monopolies & action to suppress the schemes was usually swift & brutal. The company was liquidated in 1892]

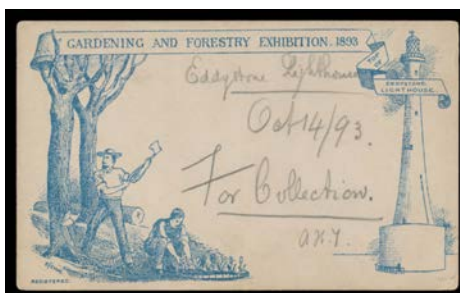
250^T



Ex Lot 583

583 PS B - with (1891) 'ROYAL NAVAL EXHIBITION/TOP OF EDDYSTONE LIGHTHOUSE' & illustration of the Lighthouse in Blue on the reverse, two examples with Exhibition pictorial datestamp in violet (a light but clear strike) or blue (superb strike), minor blemishes. *Ex Keith Harrison. (2)*

180^T



Lot 584

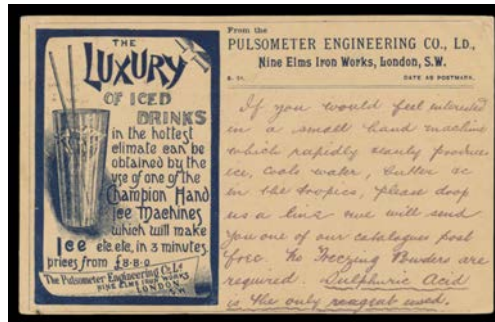
584 PS A- - with 'GARDENING AND FORESTRY EXHIBITION 1893' & illustration of the Lighthouse in Blue on the reverse, very fine Exhibition pictorial datestamp of OCT14/1893 in violet & very fine 'CHISWICK' arrival datestamp, minor blemishes. *Ex Keith Harrison*.

400^T

GREAT BRITAIN - Postal Stationery Postal Cards (continued)

Lot Type Grading Description

Est \$A

**Ex Lot 585**

- 585** PS A/A- **1883-99 Overseas Usages** with illustrated advertising comprising 1d brown for *Bennett's Tube Plate Cutter* (1883, to USA) & *London & Newcastle Scholastic Society* (1888, to Switzerland), and 1d red for *American Redfern Dress & Habit Makers* (1892, to USA), *George Titterton Safes* (1893, to China with 'HONG-KONG' datestamp) & *Pulsometer Ice Machines* (1896, appropriately to India), very fine. *Ex Keith Harrison. (5)*

250^T**Lot 586**

- 586** PS A - 1d red with illustration of *P&O SS "Caledonia"*, to Germany in 1899 with message headed "7.7.99/Red Sea" & with Italian 'BRINDISI/(AMB)' Travelling Post Office datestamp, a very fine & very early Ship postcard. *Ex Keith Harrison.*
- 587** PS A- **1885 Reply Card** ½d+½d with Fabric Join and printed notice for fundraising for a new gymnasium & tennis court comprising Assault at Arms, Smoking Concert and *Newport Amateur Minstrels*, locally used in Wales with superh 'NEWPORT/NO20/90/MON - 561' duplex, the Reply-Half still attached, very minor blemishes. *Ex Keith Harrison.*

100^T100^T**Ex Lot 588**

- 588** PS A+/B **PRIVATE POSTAL CARDS:** 1872 Embossed ½d pink with Fancy Heading in Blue (superb unused), then 1873-83 group with various Headings & advertising for *Goy's Medium Room (Auctions)*, *Grant's Morella Cherry Brandy*, *George Collier & Co Wool Merchants* and *JC & J Field Candle Works* (a beautiful issue) all used; also ½d brown with 'PATENTS FORM C1' & embossed 7½d Revenue in brown (unused). *Ex Keith Harrison. (6)*

300^T**Lot 589**

- 589** PS (B) - 1872 Embossed ½d pink with illustrated advice for *London & Provincial Horse & Carriage Insurance Co* showing bingled carriage & the distressed horse being harangued by a policeman!, minor defects & repaired corner, locally used at London MY19/77. *Ex Keith Harrison.*

100^T