

Lot Type Grading Description

Est \$A

NEW SOUTH WALES - Topographicals by Region/Town

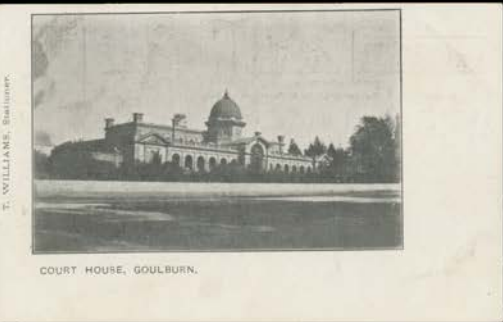


Ex Lot 329

329 C

Box of mostly better topographicals from large towns - no Sydney - through to tiny hamlets, lots of unexpected little gems including numerous local publishers & *real photo* types of post offices, fire stations, mining, etc, generally fine to very fine. *Ex Bob Young.*(150 approx)

750



Ex Lot 330

330 C

Two large albums by town 'A' to 'Y' in roughly alphabetical order with many small settlements & unusual views, a good range by local publishers & many *real photo* types, noted post offices, town halls, beaches, bridges, ferries, snow scenes, Jenolan Caves x10, hospitals, a few advertising types, etc etc, condition variable. *Ex Aldo Paladin.*(400 approx)

2,000

NEW SOUTH WALES - Topographicals by Region/Town (continued)

Lot Type Grading Description

Est \$A



Ex Lot 331

331	C	<p>SYDNEY & SUBURBS: Scarcer streetscapes including "Pitt St", "William Street", "Moore St" (Hansom Cabs), "Bent Street", "Phillip St" (Hansom Cabs) & "King Street" (Trams), also "Offices of the Sydney Harbour Trust", "Sydney Observatory" & "Royal Prince Alfred Hospital" (ward activity); then an excellent suburban group - no beaches or harbour views - including a fantastic Kerry of a crowded "Pyrmont Bridge", "Belmore Markets", "Corpus Christi Festival Manly 1909", "Sacred Heart Convent, Randwick", "Royal Agricultural Show" 3-panel panorama, "Centennial Park" (hawker's cart), fire stations at Arncliffe, Balmain & Drummoyne, "Wonderland City, Bondi" x8 etc etc. And on top of all that, they're generally fine to very fine. <i>Ex Bob Young.(57)</i></p>	600
332	C	<p>- Large album including a <i>Jolley</i>, transport with trains trams a trolley bus & a hansom cab, lots of public & a few private buildings, several with French captions, etc, also novelty types with fold-out views & a beautiful artist card of "Duntroon House" (ACT) by <i>AJ Bowden</i>, condition variable. <i>Ex Aldo Paladin.(150 approx)</i></p>	400



Ex Lot 333

333	C	<p>COASTAL REGIONS: Appealing collection of beach scenes from Port Macquarie & Byron Bay south to Narooma & Thirroul with such crackers as <i>Sydney Mail</i> "...Launch of New Manly Steamer <i>Bingarra</i>", "Manly showing the Ferry Wharf", "Scene at <i>Hylands Hotel</i> Narooma", "The Children's Spot, Lagoon Thirroul Beach", "Shipping at the Dyke, Newcastle", Cronulla group x14 etc, then a superior group of Sydney Harbour subjects including "Big Gun Practice Middle Head", "Departure of Island Steamer from Sydney", "SS <i>Barbarossa</i> Discharging, Circular Quay", <i>real photo</i> types including "The Pier, Watsons Bay", "Bay View, Pittwater", a Belching Dredge off Bellevue Hill, & Opening of the <i>Sydney Harbour Bridge</i> x2, etc, generally fine to very fine. <i>Ex Bob Young.(80 approx)</i></p>	500
-----	---	---	-----



Ex Lot 334

334	C	<p>- SOUTH COAST: Selection from Bega, Bombala, Boydtown's impressive Telephone Box, Crookwell, Eden including Whaling x2, Narooma, Queanbeyan, Tathra etc, some are <i>real photos</i>, also groups of small photographs of holidaymakers & Camping-Out, generally fine to very fine. <i>Ex Coo-ee Picture Library.(103)</i></p>	300
-----	---	--	-----

NEW SOUTH WALES - Topographicals by Region/Town (continued)

Lot Type Grading Description Est \$A



Ex Lot 335

335	C		<p>NEW ENGLAND: Selections from Armidale including 1921 Opening of Orphanage, Glen Innes, Gunnedah including 1910 Floods x2 making a panorama, Inverell including "Tin Dredging", Manilla, Moree including a local "Hupmobile" (!), Tamworth, Uralla & Wee Waa 1910 Floods x2, many are <i>real photo</i> types, generally fine to very fine. A very good lot. <i>Ex Coe-ee Picture Library.</i>(97)</p>	400
------------	---	--	---	-----



Ex Lot 336

336	C		<p>HUNTER VALLEY: Selections from Bulahdelah, Cessnock including Collieries, Gloucester, Maitland, Newcastle including <i>Hamilton Pipe Band</i>, heavy industry & docks plus eleven larger photographs, Singleton, Toronto etc, floods at Gloucester, Maitland x3 & Newcastle, many are <i>real photos</i>, generally fine to very fine. <i>Ex Coe-ee Picture Library.</i>(106)</p>	350
337	C		<p>BLUE MOUNTAINS: Touristy lot with many <i>real photos</i> of Beauty Spots including group of Daredevils at Lawson's Lookout, Scenic Railway x6, Jenolan Caves x9, Guest Houses & Hotels at Katoomba, Lapstone, Leura, Medlow Bath & Oberon, generally fine to very fine. <i>Ex Coe-ee Picture Library.</i>(70)</p>	220
338	C	A/A-	<p>- c.1920s <i>HC Swain Sydney</i> five different photographic panorama cards (400x147mm) of Blue Mountains scenery & two duplicates of "The Vera Falls", a couple of minor defects, unfolded & unused. Rare. (7)</p>	150



Ex Lot 339

339	C		<p>CENTRAL HIGHLANDS: Mostly <i>real photo</i> types of Berrima Jail in World War I x3, Bowral, Braidwood & Moss Vale, also a terrific 1911-16 Barren Jack/Burrinjuck group of the town & Dam Construction (several of these are dated), generally fine to very fine. <i>Ex Coe-ee Picture Library.</i>(37)</p>	300
------------	---	--	--	-----

NEW SOUTH WALES - Topographicals by Region/Town (continued)

Lot Type Grading Description Est \$A



Ex Lot 340

340 C - Bundle from Bowral, Mittagong & Moss Vale etc with many *real photo* types including "Mittagong FC Premiers 1905-06", 1920 Train Wreck at Moss Vale, 1911 Social Event at Bowral, etc, also c.1912 "Barren Jack City" (a quite remarkable photo) & four of Burrenjack Dam Construction, generally fine to very fine. *Ex Bob Young.(38)* 300



Ex Lot 341

341 C **AUSTRALIAN ALPS:** Attractive group with Cooma including *real photos* and Mount Kosciusko including several *Kerry cards* & small photographs of snow sports etc, also *Snowy Mountains Hydro-Electric Scheme* photographs x8, generally fine to very fine. *Ex Coe-ee Picture Library.(58)* 300



Ex Lot 342

342 C **THE ILLAWARRA:** Album with selections from Austinmer, Bulli, Kangaroo Valley, Kiama, Milton, Nowra, Port Kembla, Shoalhaven, Thirroul & Wollongong etc, lots of seascapes but plenty of better content, many are *real photos* & several are noted as "original hand-coloured", generally fine to very fine. *Ex Coe-ee Picture Library.(130+)* 400

343 C A - c.1916 town with Tents of *Kiama Military Camp* in the distance, used under cover. *Ex Coe-ee Picture Library.* 75

NEW SOUTH WALES - Topographicals by Region/Town (continued)

Lot Type Grading Description

Est \$A



Ex Lot 344

344 C

CENTRAL NEW SOUTH WALES: Album with good selections from Bathurst, Cowra, Forbes, Goulburn, Grenfell, Lithgow (many of the local heavy industries), Molong, Orange (including what may be the most impressive Golf Club House in the World!), Parkes, Wyalong/West Wyalong & Young etc, subjects include major buildings, processions, transport, schools, etc, generally fine to very fine. *Ex Coo-ee Picture Library.*(160+)

500



Ex Lot 345

345 C

ORANA & FAR WEST: Selection from Bourke, Broken Hill including Mining, "The Strike Jan 1909/Assault on Mine Officials" & Fire at *Lennon's Pictureland*, Cobar, Dubbo, Mudgee, Peak Hill & Wellington, also generic Outback group including artesian bores, an attractive group of *Kerry* cards & some photographs including Hunters with Dead Roos x6, generally fine to very fine. *Ex Coo-ee Picture Library.*(125 approx)

400



Ex Lot 346

346 C

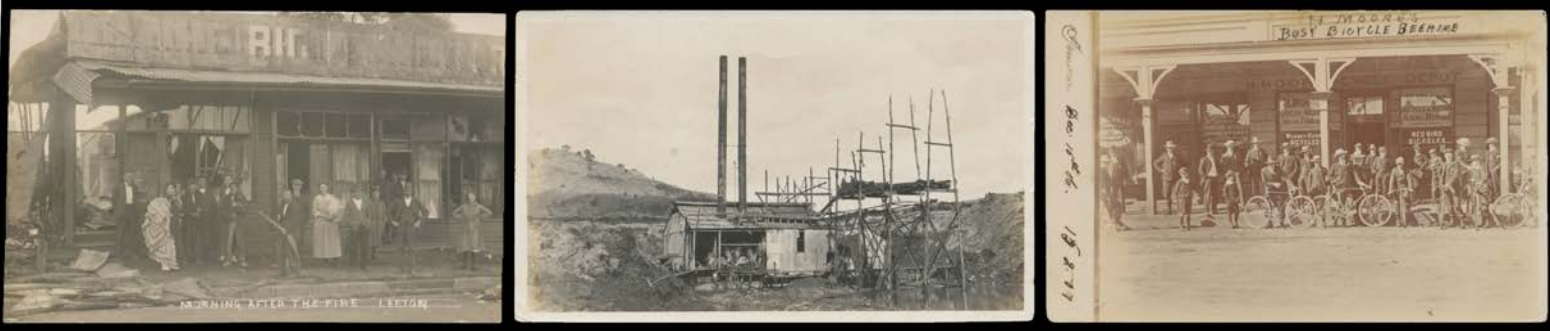
MURRAY RIVER/RIVERINA: Good selection from Albury, others from Corowa, Deniliquin, Mathoura, Wentworth etc, many are *real photo* types including Lake Victoria 1915 group x12 plus photographs of the Hume Reservoir Under Construction, the Opening & in Flood (1931 x2), generally fine to very fine. *Ex Coo-ee Picture Library.*(96)

350

NEW SOUTH WALES - Topographicals by Region/Town (continued)

Lot Type Grading Description

Est \$A



Ex Lot 347

347 C [Redacted] - Companion lot from Adelong including Gold Mining, Cootamundra, Griffith, Gundagai, Hay including the town being Engulfed by Dust Storm, Leeton including a great post-Fire shot, Temora including 1902 Unveiling of Boer War Memorial, Wagga Wagga & Yanco, many are *real photo* types, generally fine to very fine. Ex *Coo-ee Picture Library*.(91)

350



Ex Lot 348

348 C [Redacted] **LORD HOWE ISLAND:** *Real photo* types x5 comprising "Mt Lidgbird & Gower", "South Reef", "Edie's Slew" & two uncaptioned views, also small photographs x8 & three larger prints, fine to superb unused, Very scarce material. Ex *Coo-ee Picture Library*. (14 items)

250