

Lot Type Grading Description

Est \$A

TONGA



Ex Lot 786

786 C A/B Four early *real photo* types (one to Egypt redirected to London then back to Sudan!), 1925 *J Martin* card with two views to New Caledonia, cancelled at Nukualofa x2, Haapai or Vavau x2, one with minor toning otherwise fine to very fine. Very scarce items. (5)

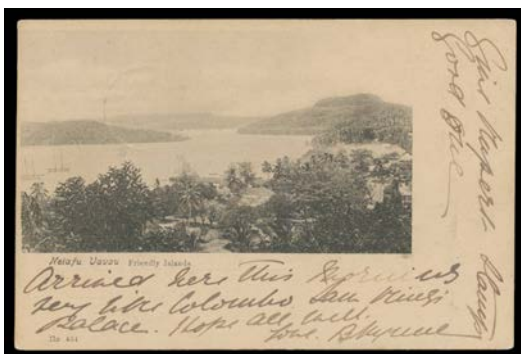
500



Ex Lot 787

787 PS A/B Penny postal cards with multicoloured view "A Native Village", black & white views "The Palace Chapel" & "Presentation of Kava", and sepia views "Beach at Haapai" & "Ovava: Captain Cook Tree", postally used to New Zealand x3, NSW or Tasmania, fine to very fine. A very scarce and desirable group. (5)

500



Lot 788

788 C A 1899 Three-quarter view "Neiafu Vavau Friendly Islands" to Victoria with Pictorials 1d tied by 'NUKUALOFA/28JE99/TONGA' cds. Rare this early.

150