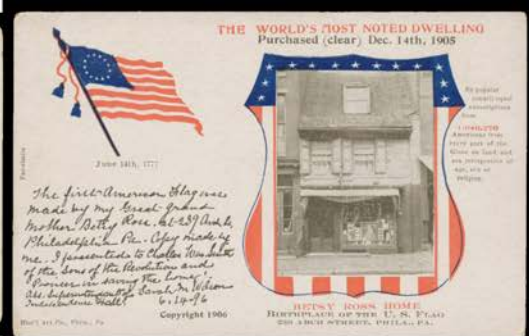


Lot Type Grading Description

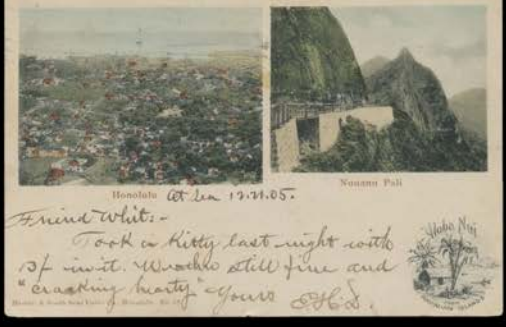
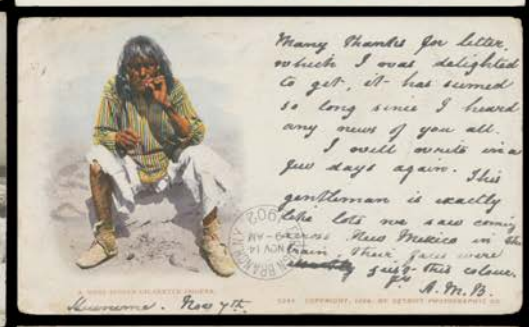
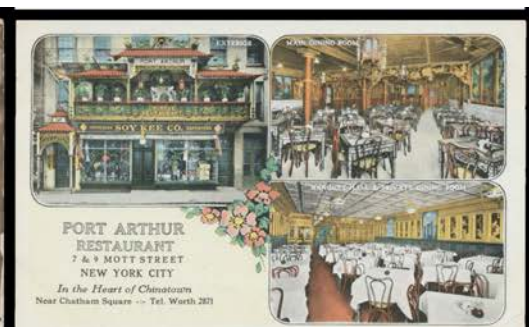
Est \$A

UNITED STATES OF AMERICA



Ex Lot 790

790	C	Wide-ranging collection with public buildings, hotels, manufacturers, patriotics including Betsy Ross x3, giant trees, railways, advertising cards, etc, condition variable but generally fine to very fine. Ex Bronte Watts.(200 approx)	300
791	C	Album with many attractive cards & some "linens", postmark potential, condition variable but many are fine to very fine. Ex "Cartophile". (150 approx)	75



Ex Lot 792

792	C	Box with some Undivided Backs & numerous better subjects including advertising cards for Hotels, Disasters, unusual Niagara Falls views, real photo of Cleveland's Mail Tram, Crocker art cards for Yosemite National Park x9 (mostly superb unused), American Indians x13 including Undivided Backs with glitter x6, etc, many from major cities but many from smaller States including Montana, Rhode Island, Vermont & Washington, also Washington DC x4 (three to Malta), Hawaii x12 & Virgin Islands real photos x5 (superb unused), mercifully few "linens", condition variable but many are fine to very fine. Ex Keith Harrison.(250 approx)	400 ^T
-----	---	--	------------------

UNITED STATES OF AMERICA (continued)

Lot Type Grading Description

Est \$A



Ex Lot 793

793 C **GLAMOUR:** Collection of mostly pre-World War I artist cards predominantly for *Reinthal & Newman* x230 approximately the majority by *Harrison Fisher* x100 approx (Cat £10 each), *Philip Boileau* x60 approx (£10 each) & *F Earl Christy* x40 approx (£6 each); also for *Edward Gross Co* by *Elsie Catherine Fidler* x2 (£8), *Alice Luella Fidler* x8 (£8) & *Pearle Fidler LeMunyan* x15 (£6); others for various publishers; some very minor duplication, mostly unused & generally fine to very fine. *Ex Keith Harrison.* [See also Lots 140 141 & 629] **(320 approx)**

500^T



Ex Lot 794

794 C A+ - Romance cards by "DWIG" with Stylish Ladies & Messages in Mirror-Writing set of 12 with embossing & gold highlights, unused. Unusual, gorgeous and superb! *Ex Keith Harrison.* **(12)**

250^T



Ex Lot 795

795 C **HOSPITALS:** Wide-ranging collection in a weird album - you need to view it! - of mostly major facilities in key States but also representation from Alabama, Connecticut, Kansas, Louisiana, Nebraska, South Dakota, Utah & Washington State, noted Military & Veterans' Hospitals, "Boston Floating Hospital", "Chippewa Indian Hospital" & "Epileptic Colony at Abilene", lots of "linens" but also some excellent *real photo* types, condition variable but generally fine to very fine. *Ex Derek Pocock.* **(350+)**

300