

Lot Type Grading Description

Est \$A

VICTORIA - Topographicals by Region/Town



Ex Lot 447

447 C

MELBOURNE: Two large albums with unusual streetscapes, hotels, churches, University of Melbourne, Eastern Hill Fire Station x8, GPO x11, Princes Bridge x15, Government House x8, sketches by *Douglas Pratt* x3, "Memorial Service late King Edward VII", War Memorial Dedication, etc, lots of trams, also some suburban cards, many unused, condition variable but generally fine to very fine. *Ex Aldo Paladin.*(270 approx)

500



Ex Lot 448

448 C

MELBOURNE SUBURBS: Large album including Armadale x5, Brighton x8, Cheltenham x4, Dandenong x7, Footscray x10, Dandenong x7, Kew x8, Malvern x7, Mordialloc x12, Port Melbourne x10 (mostly shipping), street scenes, churches, schools, post offices, recreation grounds, etc, condition variable, a high proportion are unused, some postmark interest. *Ex Aldo Paladin.*(170 approx)

1,750



Ex Lot 449

449 C

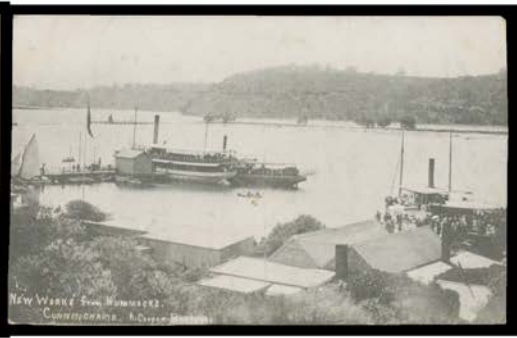
COUNTRY TOWNS: 'Acheron' to 'Bendigo' collection - no Ballarat - with many better cards & good sections from Bairnsdale x27, Beechworth x15, Bendigo x21 (some are modern reproductions), etc, lots of early *Rose* cards including Belgrave x15, mostly unused & generally very fine. *Ex Aldo Paladin.*(190 approx)

600

VICTORIA - Topographicals by Region/Town (continued)

Lot Type Grading Description

Est \$A



Ex Lot 450

450 C - 'Bright' to 'Euroa' with good sections from Bright x23, Buchan Caves x7, Colac x11, Cowes (Phillip Island) x6, Daylesford x39, Echuca x16, etc, many unused, condition variable but generally fine to very fine. *Ex Aldo Paladin.(200 approx)*

600



Ex Lot 451

451 C - 'Fernshaw' to 'Hopetoun' with good sections from Hamilton x24, Healesville x80 approximately (mostly trees & creeks, plus a nice group of Rose scenes of Maroondah Dam), etc, many other early Rose cards including Ferny Creek x15, Grampians x20, many unused, generally fine to very fine. *Ex Aldo Paladin.(200 approx)*

600



Ex Lot 452

452 C A **WALHALLA:** c.1910 (?) *W Harrison Lee (Wonthaggi) real photo* types comprising the Township x2, Railway x2 ("Horseshoe Bend" & "Crossing Thomson Bridge") and Pack Horses x2 (in Main Street, & on an alpine trail), very fine unused. *Ex Bob Young.(6)*

240



Lot 453

453 C **DANDENONG RANGES:** Album of cards from towns & hamlets through the Ranges plus some outer suburban (Doncaster, Mitcham & Ringwood noted), lots of beauty spots, generally fine to very fine but many are modern copies only so *caveat emptor*. *Ex Shirley Jones.*

200

VICTORIA - Topographicals by Region/Town (continued)

Lot Type Grading Description

Est \$A



Ex Lot 454

454 C

YARRA RANGES/VALLEY: Album of Healesville & Mansfield Districts with some Undivided Backs, mostly beauty spots including many bridges, better subjects including timber-cutting, "Healesville Railway Station", "The Mail Coach blocked on the Blacks' [sic] Spur", Guest Houses including 1903 advertising card for the *Grand Hotel (Healesville)* & "St Fillan's Narbethong", "Holiday Camp at Warburton", etc, includes many *Rose* views, one noted with the rare 'MOUNT DANDENONG NORTH' cds, generally fine to very fine but some are **copies only** so inspection is recommended. *Ex Shirley Jones. (150 approx)*

750