

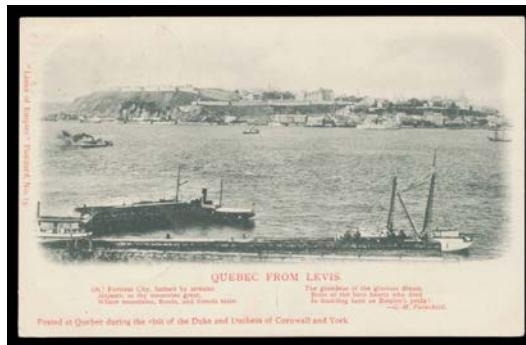
Lot Type Grading Description

Est \$A

MISCELLANEOUS LOTS**Ex Lot 50**

50 C **British Empire** selection of mostly better scenes/subjects with Ascension x3, Malaya including 1922 Johore to Australia, India court-size artist cards x4, "Funeral Pire" of a pile of corpses & three Australian Mission cards, Ceylon, Aden, Malta, Mauritius, St Helena x2, South Africa *real photo* "Cango Caves - Visitors stopping for refreshments", useful group from Jamaica, the lesser West Indies & British Guiana, etc, condition variable but generally fine to very fine. *Ex Bronte Watts. A very good lot. (120 approx)*

750

PICTURE POSTCARDS - SUBJECTS**Ex Lot 205**

205 C A/B **ROYALTY** 1900 *Wrench* "Links of Empire" Numbers 11 to 20 for the *Royal Visit* from Australia to Canada, all posted at the appropriate ports of call including 'ASCENSION/AU30/01' & 'ST JOHNS/OC25/01/NEWFD', a few minor blemishes but fine to very fine. *Ex Keith Harrison. (10)*

400^T