

Lot Type Grading Description

Est \$A

COMMONWEALTH OF AUSTRALIA



Lot 254

254 C A **1934 Royal Visit** *real photo* "HMS Sussex/1934/Royal Tour" with illustration of the route from GB to Australia plus photos of the ship, Sydney Harbour Bridge & the *Duke of Gloucester*, ink note on reverse, unused. 100



Lot 303

303 C B **PATRIOTISM:** 1926 *PC Beer* Australia Day "Remember the Dardenelles" with vignettes of *Sergt ER Larkin* MLA & *Cammeray Public School* (NSW), priced at 3d, a little aged & tiny fault at lower-right, minor blemishes on the address-side, unused. [Kevin Crotty's very fine example sold at the *Prestige* auction of 8/5/2013 for \$575] 300

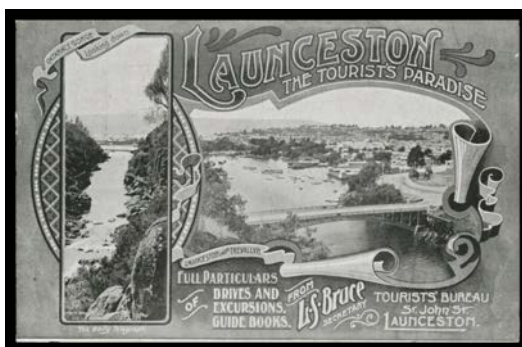
NEW SOUTH WALES



Ex Lot 325

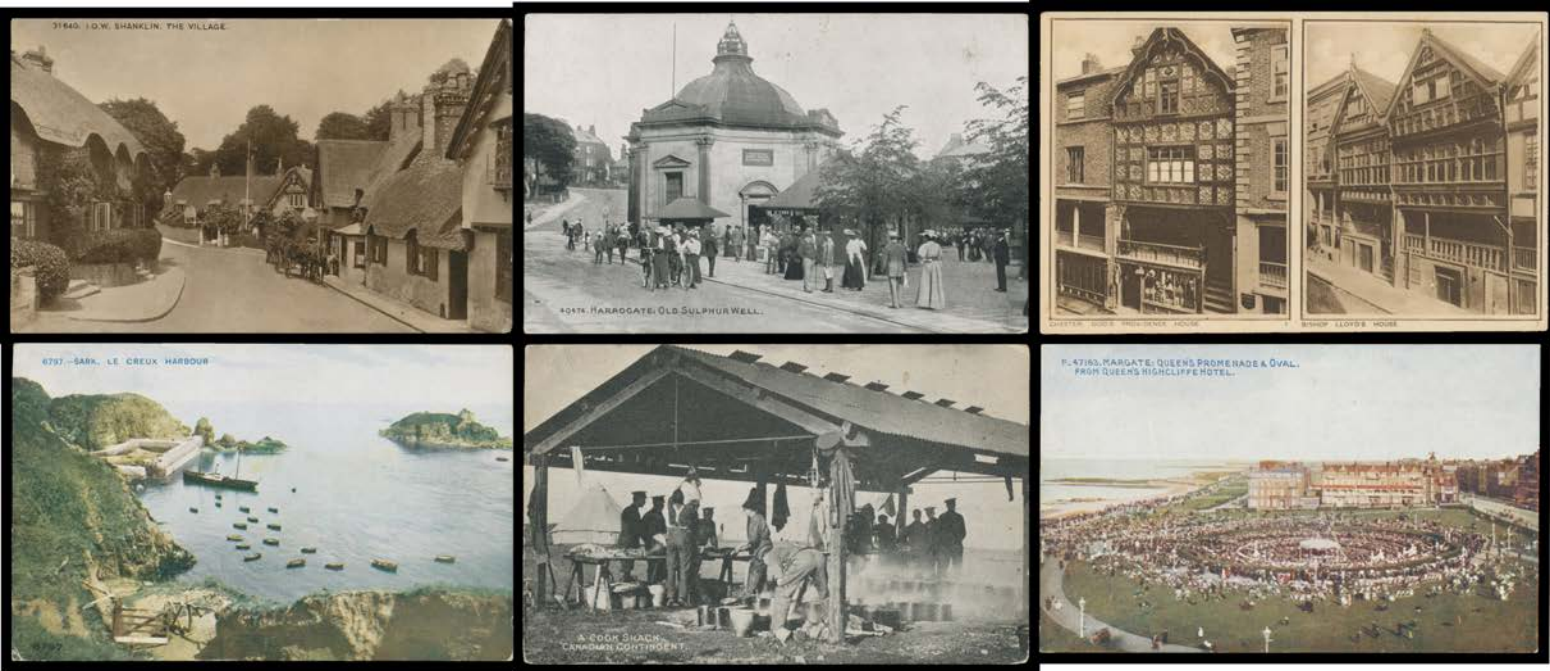
325 C Historical mostly *real photo* group for 1908 Visit of the US Fleet, 1918 Victory Celebrations x3, 1920 Royal Visit, 1932 Anzac Day, *Sydney Harbour Bridge* Under Construction x4 & Opening x3 plus eleven small photographs of the construction, 1941 Welcome to HMAS "Sydney", etc, also a few unrelated cards, generally fine to very fine. *Ex Coo-ee Picture Library.*(56) 500

TASMANIA



Lot 424

424 C A+ **1912** (c.) *Daily Telegraph* "Launceston: The Tourist's Paradise", unused. Superb! *Ex Joe Duif.* 100

GREAT BRITAIN**Ex Lot 546****546**

C

Five large albums of *Photochrom* cards from many different series & in a wide variety of styles including artist cards & *real photo* types, the vast majority are **Celesques** (most of which are numbered on the face) on the characteristically stout board, subjects include Beaches, the Lakes District, Yorkshire, Isle of Wight, Channel Islands etc, also some overseas subjects notably Holy Land, condition variable but generally fine to very fine. A wonderful basis for serious expansion at modest cost. *Ex Derek Pocock*.

In a 1998 article in "Picture Postcard Monthly", *Brian Lund* stated "Because a majority [of *Celesques*] feature tourist locations & rural views they do not always find favour with collectors...They deserve better..." & mounted a spirited defence of what are well produced & generally attractive cards. We agree wholeheartedly with Brian. The thematic content is very high, with an abundance of Churches, Bridges, Villages, Welsh Costumes, Events etc, even a few WWI military cards. In addition, they lend themselves to being collected by series or County/Region. **(1300 approx)**

750

Lot Type Grading Description

Est \$A

GREAT BRITAIN - Early Private Postcards



Ex Lot 593

593 C 1894-1900 Court-Size Cards selection by identified producers BP Co "George Square - Glasgow", Blum & Degen London Multi-View (ironed-out vertical crease, well clear of the views), Max Newmann coloured "The London Bridge", Pictorial Stationery Co coloured x6 for London x3, Brighton, Broadstairs & Eastbourne, Bertram Cohen "Glasgow - Caledonian Railway Company's Central Station Hotel" (a very early railway card), German WH "hold to the light" card of "Tower Bridge and Tower" & chromolitho multi-views by Lawrence (Dublin) of Dublin & Blümlein & Co of Sheffield (repaired corner), and advertising cards for Johnston's Corn Flour and The Bavarian Restaurant & Cafe, usages between 1896 & 1901, generally very fine to superb. Ex Keith Harrison. [See also Lot 552]

From 1894, private postcards were required to conform to the "court" size of 4½x3½ inches (115x89mm). Two of this group offend against the regulation prohibiting the use of the British Coat of Arms in the heading. (15)

600T



Ex Lot 595

595 C - selection of locally produced cards by Burgis & Colbourne "Kenilworth Castle" & "Leamington Spa - Adelaide Bridge", FF & Co "Bedale", Auty Ltd (Tynemouth) "Tynemouth" & "Rothbury - Cragside", M&Co "Hastings" multi-view, Derry & Sons (Nottingham) "Nottingham Castle", unidentified producers for "Margate - The Harbour" on pink stock & multi-views for Barmouth (a bit spotty, mostly on the address-side) & Cambridge (message in French states "Here is a new card of Cambridge for your collection"), finally advertising card for "Snowdon Summit Hotel" illustrated on both sides (two examples, stamped & addressed on face or reverse!), a few blemishes but generally fine to very fine. Ex Keith Harrison.

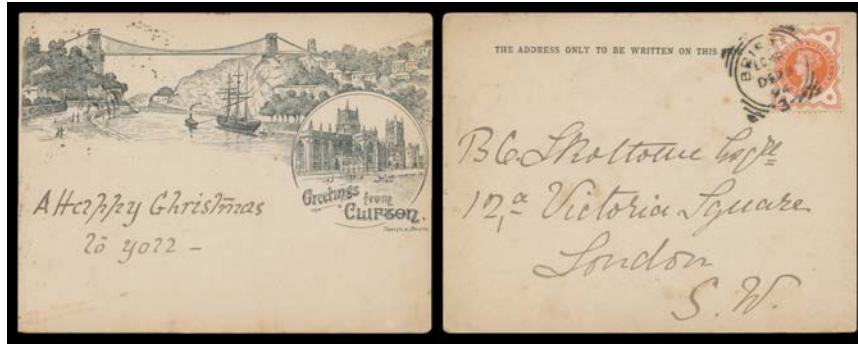
This lot includes the earliest recorded cards from Barmouth & Bedale as per "Picture Postcard Annual" (2015), and new ERDs of SP7/96 for Birchington, SP16/99 for Rothbury & MY8/96 for St Leonards-on-Sea. (12)

500T

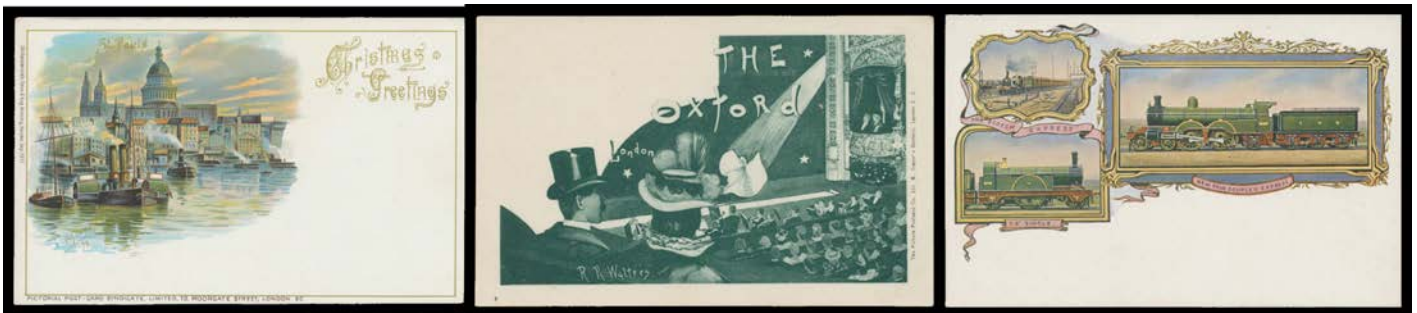
GREAT BRITAIN - Early Private Postcards (continued)

Lot Type Grading Description

Est \$A

**Lot 596**

- 596** C B - 1894 *Thatcher (Bristol)* Woodcut "Greetings from Bristol" (Ship & Tug Passing below Bridge, and Cathedral), to London with Christmas message & 1/4d orange tied by 'BRISTOL/DE23/94/ -3- ' squared-circle datestamp, very minor blemishes, Cat £250 for court cards used in 1894. *Ex Keith Harrison*. [This is one of the earliest Court Cards, & among the earliest British topographical cards]

150^T**Ex Lot 602**

- 602** C - 1898-1902 "Intermediate-Size Cards" comprising *Blum & Degen* Sepia/Cream "Trafalgar Square" (superb & very early usage of 28AP98, to Bohemia), Black/Blue "Blackfriars Bridge", "The Tower Bridge", "India Docks" & "Cathedral - Manchester" (used in 1899), Black/White "Great Wheel" (early usage of JU14/98) & "The Bridge, Plemont, Jersey" (superb), chromolithos for *Pictorial Postcard Syndicate* x2 (one used in 1898), *JMB* x4 (one used in Germany in 1897), 'No 1 Printed in Saxony' Sunderland multi-view & a gorgeous *Great Northern Railway* multi-view (superb), and *Picture Postcard Co Art Nouveau* card by *RR Walters* "The Oxford" (Theatre, superb), mostly unused & very fine to superb. A very scarce & attractive lot. *Ex Keith Harrison*. [The "intermediate" size was officially no larger than 130x83mm. Examples of this size are very elusive; several in this lot - including those printed in Germany - are slightly smaller] (16)

500^T