

Lot Type Grading Description Est \$A

VICTORIA

435	C	A	1900 (c.) chromolitho "Melbourne" with panorama, St Patrick's & St Paul's Cathedrals, unused.	80
436	C	A+	1905 (c.) Progressive Printery "Federal Palace Hotel", unused. Superb! Ex Joe Duif.	50



Lot 445

445	C	A+	ADVERTISING: c.1900 Troedel & Co advertising card for Melbourne's Grand Hotel (now the Windsor) with four small illustrations in brown, unused. Very early & rare. Superb!	100
-----	---	----	----------------------------------------------------------------------------------------------------------------------------------------------------------------------------	-----

CANADA

482	C	A+	1905 (c.) chromolitho multi-view advertising card for King Edward Hotel (Toronto), unused. Superb! Ex Joe Duif.	50
-----	---	----	-----------------------------------------------------------------------------------------------------------------	----

GREAT BRITAIN - Early Private Postcards



Ex Lot 593

593	C		1894-1900 Court-Size Cards selection by identified producers BP Co "George Square - Glasgow", Blum & Degen London Multi-View (ironed-out vertical crease, well clear of the views), Max Newmann coloured "The London Bridge", Pictorial Stationery Co coloured x6 for London x3, Brighton, Broadstairs & Eastbourne, Bertram Cohen "Glasgow - Caledonian Railway Company's Central Station Hotel" (a very early railway card), German WH "hold to the light" card of "Tower Bridge and Tower" & chromolitho multi-views by Lawrence (Dublin) of Dublin & Blümlein & Co of Sheffield (repaired corner), and advertising cards for Johnston's Corn Flour and The Bavarian Restaurant & Cafe, usages between 1896 & 1901, generally very fine to superb. Ex Keith Harrison. [See also Lot 552]	
-----	---	--	---------------------------------------------------------------------------------------------------------------------------------------------------------------------------------------------------------------------------------------------------------------------------------------------------------------------------------------------------------------------------------------------------------------------------------------------------------------------------------------------------------------------------------------------------------------------------------------------------------------------------------------------------------------------------------------------------------------------------------------------------------------------------------------------	--

From 1894, private postcards were required to conform to the "court" size of 4½x3½ inches (115x89mm). Two of this group offend against the regulation prohibiting the use of the British Coat of Arms in the heading. (15)

GREAT BRITAIN - Early Private Postcards (continued)

Lot Type Grading Description

Est \$A



Ex Lot 595

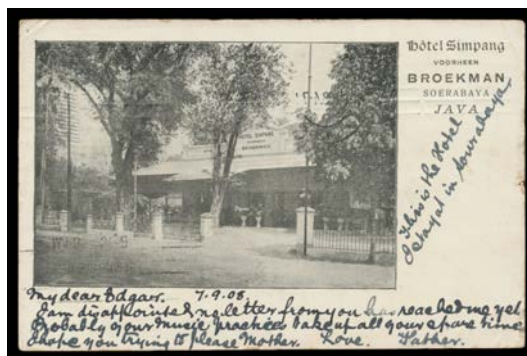
595 C

- selection of **locally produced** cards by *Burgis & Colbourne* "Kenilworth Castle" & "Leamington Spa - Adelaide Bridge", *FF & Co* "Bedale", *Auty Ltd* (Tynemouth) "Tynemouth" & "Rothbury - Cragside", *M&Co* "Hastings" multi-view, *Derry & Sons* (Nottingham) "Nottingham Castle", unidentified producers for "Margate - The Harbour" on pink stock & multi-views for Barmouth (a bit spotty, mostly on the address-side) & Cambridge (message in French states "Here is a new card of Cambridge for your collection"), finally advertising card for "Snowdon Summit Hotel" illustrated on both sides (two examples, stamped & addressed on face or reverse!), a few blemishes but generally fine to very fine. *Ex Keith Harrison*.

This lot includes the **earliest recorded cards** from Barmouth & Bedale as per "Picture Postcard Annual" (2015), and new ERDs of SP7/96 for Birchington, SP16/99 for Rothbury & MY8/96 for St Leonards-on-Sea. (12)

500^T

NETHERLANDS COLONIES



Ex Lot 717

717 C

DUTCH EAST INDIES: Attractive group mostly from Java including advertising card for *Hotel Simpang* (Soerabaja), plus a few Sumatra & Celebes x2, a few unused, ten to Australia, condition variable. (23)

250^T