

Lot Type Grading Description Est \$A

MISCELLANEOUS LOTS

24 C **European selections** from Belgium x14 & Belgian Congo x3; Finland x8; Greece x25 including Greek Islands & Salonika Fires on 18/8/1917; Italy x32 including Volcanic Eruptions of Vesuvius in 1906 & Etna in 1928; Italian Colonies Eritrea x6 & Libya x8; Holland x9 including Windmill Watercolours set of 6; & a couple of others; mostly unused but some postmark interest, condition variable but generally fine to very fine. *Ex Keith Harrison.* **(105)** 240^T



Ex Lot 33

33 C **European collection** in an album with useful cards from France, Italy, Monaco, Switzerland, Russia & the Eastern Bloc, excellent postal history/postmark content including better frankings & unusual destinations, condition variable. *Ex "Cartophile".* **(170+)** 400

42 C **Box** with bundles of cards from Germany & Austria x60 approximately, Gibraltar x28, India x33, Italy x76, Holland x49 with lots of Costumes, and a mostly modern array from Hawaii x150, condition a bit mixed but generally fine to very fine. **(400 approx)** 200

PICTURE POSTCARDS - SUBJECTS

140 C **GLAMOUR:** Bundle of artist cards from Great Britain x60 approximately, Austria x8, Germany x13, Italy x12, Russia x3 & a few others, generally fine to very fine used or unused. *Ex Keith Harrison.* [See also Lots 141 629 & 793] **(100 approx)** 200^T

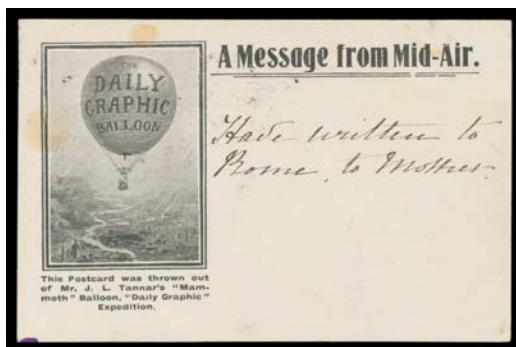
ANTARCTICA



Lot 463

463 C A **ARCTIC:** 1901 Italian "Ricordo Delle Feste/27 Gennaio 1901" card for the 1900 *Italian Arctic Expedition* with vignettes of the *Duke of the Abruzzi* and his ship "Stella Polare", used from 'GENOVA' to England in 1901. *Ex Keith Harrison.* 100^T

GREAT BRITAIN



Lot 556

556 C B **1907 "Daily Graphic" Expedition** card of a Balloon over a Riverine Landscape, to Italy with 1d tied by Brighton datestamp of OC27/07 & 'ISCHIA' arrival datestamp, minor blemishes. *Ex Keith Harrison.* 150^T

Lot Type Grading Description

Est \$A

GREAT BRITAIN - Postal Stationery Postal Cards

The world's first Postal Card was issued in Austria on 1st October 1869. Great Britain "joined the club" exactly one year later.



Lot 586

586 PS A **1883-99 Overseas Usages** 1d red with illustration of P&O SS "Caledonia", to Germany in 1899 with message headed "7.7.99/Red Sea" & with Italian 'BRINDISI/(AMB)' Travelling Post Office datestamp, a very fine & very early Ship postcard. *Ex Keith Harrison.*

100^T**ITALY**

680 C/L A **1930 real photo card** of *Benito Mussolini* (in top hat) & the poet *Gabriele d'Annunzio*, unused; also a note in English signed "D'Annunzio". [d'Annunzio was a WWI hero & Mussolini's favourite poet. In 1919, he seized power in Fiume where he later declared war on Italy!] **(2 items)**

75^T

Ex Lot 681

681 C **FIUME & TRIESTE:** Attractive **Fiume** group including Undivided Backs x6 (one with Austrian stamp & 'GRUZ/GRAVOSA' cds & two with Hungarian stamps & 'FIUME' cds), two with embossed Flags, etc; **Trieste** Undivided Back with *Domenico Rossetti* illustrations on both sides with Austrian stamp & 'TRIEST/ A /TRIESTE' cds, and 1911 busy scene at Grado with Austrian stamp & 'GRADO' cds, one other; and **Zara** street scene & Dalmatia Costumes x3 all unused but with Zara Overprints on the views; generally fine to very fine. Very scarce group reflecting the fascinating political history of this area. *Ex Keith Harrison.* **(20)**

300^T