

Lot Type Grading Description

Est \$A

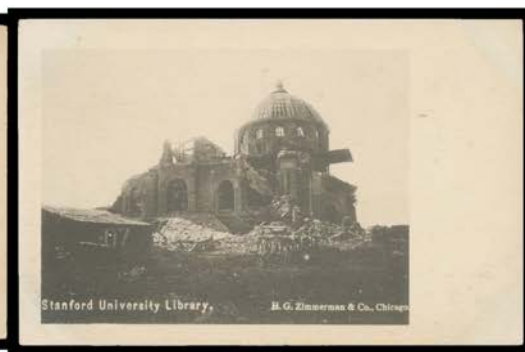
PICTURE POSTCARDS - SUBJECTS



Ex Lot 104

104 C **CHILDREN:** Mounted group with studio portraits, groups at play, artist cards by *Milicent Sowerby* x4, *Agnes Richardson* x6 & *Margaret Tarrant* etc, good Australian - especially South Australian - content including Miniature Railway Adelaide Exhibition Grounds, "Eileen Bernard Champion Girl Athlete", "Little Daisy Harding Gold Medallist", "Maggie Bevan...Winner of 115 Eisteddfodic Prizes" & "Lulu Benstead Young Coolgardie Singer", Children on Elephant at *Wonderland City Bondi*, also German fairy tale cards including *Bruder Grimm* x17, British *Beagles & Co* "The Motor Maniac" set of 6, comic cards including *Felix the Cat* x6 & early *Walt Disney* x5, Fantasy Children cards x22 etc, condition variable but generally fine to very fine. *Ex Bronte Watts. (150+)*

300



Ex Lot 159

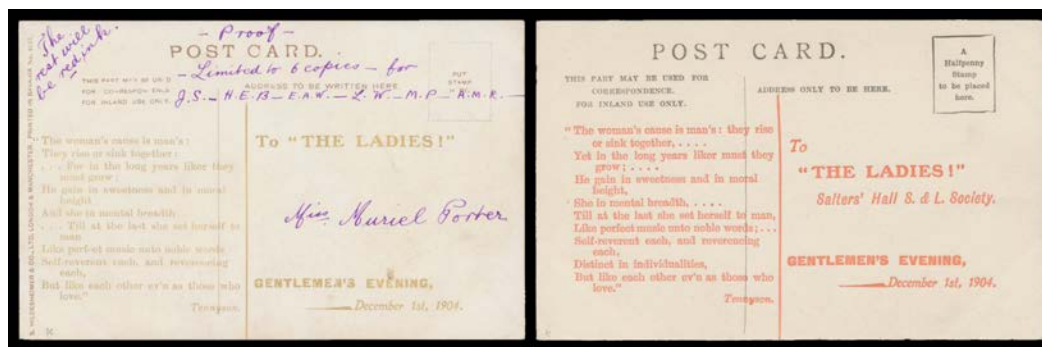
159 C **LIBRARIES:** Collection in two volumes with strength in British cards but with useful Australian, American - including 1906 Earthquake Damage to *Stanford University Library* - & French content and many other countries represented, buildings range from the massive to the modest, some Interiors & others of ancient books etc, condition variable but generally fine to very fine. A fascinating lot that should appeal to a wide audience. *Ex Derek Pocock. (340 approx)*

500

GREAT BRITAIN - Subjects/Themes

615 C **AUTHORS:** *Tuck's Oilettes* "In Dickens Land" about 75% with quotations & coloured illustrations - some quite amusing - others of *Dickens'* Characters or of towns or buildings featured in his books, mostly unused & generally very fine. *Ex Keith Harrison. (90 approx)*

160^T



Lot 657

657 C **A** **SUFFRAGETTES/VOTES FOR WOMEN:** 1904 *Salter's Hall S&L Society* two Children's cards overprinted on the address side for a Gentlemen's Evening with *Tennyson's* verses "The woman's cause is man's: they rise or sink together..." **1**) in gold, endorsed "Proof/Limited to 6 copies..." & "The rest will be red ink"; and **2**) the promised version in red; unused. A very rare pair. *Ex Keith Harrison. [Many men supported the Women's Rights movement, but much male support was lost by ever more provocative acts & escalating violence]*

200^T

Lot	Type	Grading	Description	Est \$A
-----	------	---------	-------------	---------

ITALY

680	C/L	A	1930 real photo card of <i>Benito Mussolini</i> (in top hat) & the poet <i>Gabriele d'Annunzio</i> , unused; also a note in English signed "D'Annunzio". [<i>d'Annunzio</i> was a WWI hero & Mussolini's favourite poet. In 1919, he seized power in Fiume where he later declared war on Italy!] (2 items)	
-----	-----	---	--	--

75^T