

Lot	Type	Grading	Description	Est \$A
-----	------	---------	-------------	---------

### COMMONWEALTH OF AUSTRALIA - Postal History

712	CPS		Mostly commercial mail including a bundle of South Australian 1930s-40s registered covers plus a few advertising covers from smaller towns one with 'PAID AT PORT AUGUSTA/1D 8OC37/SA' cds (ERD by 11 years; rated RR), also two 1948 philatelic covers with scarce 'MILDURA BCH UNIVERSITY/VIC-AUST' cds, Postal Stationery including KGV 5d Registration Envelopes with 'COMPENSATION' handstamp x9 & STO Wrapper 5d light blue for <i>Sydney Stock Exchange</i> , etc, condition variable. <b>(70 approx)</b>	250
-----	-----	--	--	-----

### PRE-WAR PERIOD and MILITARY CAMPS

785	C	B	<b>MILITARY CAMPS:</b> Illustrated YMCA lettersheet with '[flags]/MELBOURNE YMCA/ON/ACTIVE SERVICE/...' on the face & 'YMCA Tents/The Social Service Centre of Camp/...' in blue on the reverse, the semi-literate letter headed "Broadmeadows Camp 9 light horse Reinforcements", KGV 1d red tied by manuscript cancellation & Melbourne machine cancellation applied in transit, minor opening faults.	200
-----	---	---	--	-----

### THE TROOPSHIPS - THE FIRST and SECOND CONVOYS

Michael Blake has done personal research into the ships and the soldiers who sent the mail. This valuable background information has been retained with the various lots.



Ex Lot 794

794	C		<b>FIRST CONVOY:</b> Picture postcards of the ships comprising "Geelong" (Troopship A2) <i>real photo</i> dated Oct 20th, unused; "Orvieto" (A3) pre-War card with 'HMAT <i>Orvieto</i> A3 Xmas 1914/Printed at Sea' overprint, minor faults; "Shropshire" (A9) pre-War card with 'HMA Transport No 9' overprint, superb Melbourne cds & 'T1D' h/s; "Karoo" (A10) advertising card for <i>WG Deuchar Shipping Agent</i> !, unused; "Ascanius" (A11) "Departure of South Australian Infantry!...20th October 1914", unused; "Hororata" (A20) used from Albany with superb 'T1D'-in-oval h/s; also <i>Patriotic Series</i> of Cruiser "HMAS <i>Sydney</i> " (unused) & New Zealand <i>William Nees real photo</i> "Japanese Battleship <i>Ibuki</i> Convoy" (used under cover); generally fine to very fine. <b>(8)</b>	350
-----	---	--	---	-----

### NEW SOUTH WALES - Postal Stationery



Lot 931

931	PS	A	<b>ENVELOPES - STO:</b> Arms 1d red Die I for <i>Waverley Brewery</i> with 'WATSON'S DUNDEE WHISKIES' advertising collar, local usage in 1899. Rare & desirable: very few Australian postal stationery items bear advertising collars.	350 <sup>T</sup>
-----	----	---	--	------------------

Lot Type Grading Description

Est \$A

**SOUTH AUSTRALIA - Postal History**

Most of the taxed lots in this section are from the fine collection formed by Ralph McKenna from Boston Massachusetts. Included here are a number of important items not seen since the sale of John Griffiths' collection in 1992. References to Harry Lower's and Michael Blake's collections are to the Prestige auctions of 12.5.2007 and 7.2.2014 respectively.



**Ex Lot 988**

**988** C **PICTURE POSTCARDS:** Collection of advertising cards for South Australian businesses or agents of out-of-State firms including hotels, retailers, manufacturers, importers, general stores, theatre productions, *Viceroy Tea* set of 6 aerial views of "Adelaide from a Balloon" etc, mostly Adelaide firms but some suburban and country users including from Gawler, Quorn & Port Lincoln, condition rather mixed but many are fine to very fine. *Ex Bronte Watts. (115)* 2,000

**VICTORIA - Postmarks**

1120 C B A1 **Gracedale House:** 'GRACEDALE HOUSE/13NO16/VIC' (ERD) very fine strike tying KGV 1d red to envelope - roughly opened - with printed 'GRACEDALE HOUSE' at upper-left, with four-page note on matching letterhead & 1907 PPC of the property. Rated RR. [7km ENE of Healesville. RO c.1902; PO 1.12.1914; closed c.1929] **(3 items)** 100

**BRITISH WEST INDIES****Ex Lot 1162****1162** CPS

Valuable batch of commercial covers from Bahamas x2; Barbados x4 including 1906 registered to Paris with French Guiana return address & Nelson 2d & 2½d; Bermuda x6 with 1921 registered to USA with Tercentenary ½d & 4d; British Guiana x8 with 1901 uprated 1d Envelope with superb 'FORT WELLINGTON' cds, 1967-68 BGuiana 4c Envelope & 6c Aerogramme both uprated with Guyana issues; British Honduras x3 with 1888 5c on 1½d Postal Card to Germany & 1928 uprated Registration Envelope with 'STANN CREEK' cds & label; Caymans x4 with 1924 to Texas with huge US 'REBUTS' h/s & boxed 'RETURN LETTER.../KINGSTON JAMAICA' d/s, & 1945 registered OHMS to Canada; Dominica; Grenada x6; Jamaica x15 including 1892 to France with 'FALMOUTH' squared-circle, 1898 with 'BUFF-BAY' cds, seven advertising covers including 1901 registered to Nova Scotia with light but obvious 'DIRECTOR OF CUSTOMS/Kingston Jamaica' d/s; St Kitts 1883 1½d Postal Card to Germany; St Kitts Nevis x2; St Vincent; Tobago 1909 1d Postal Card with 'SCARBOROUGH/TOBAGO' cds; Trinidad & Tobago x7 with 1937 airmail to Guadeloupe & three different QEII Aerogrammes to Czechoslovakia; and Virgin Islands 1943 airmail Censor cover to New York with 'ROAD TOWN/TORTOLA WI' cds; some scarce KGV I & QEII Postal Cards, condition variable but most are fine to very fine. (62)

1,750<sup>T</sup>

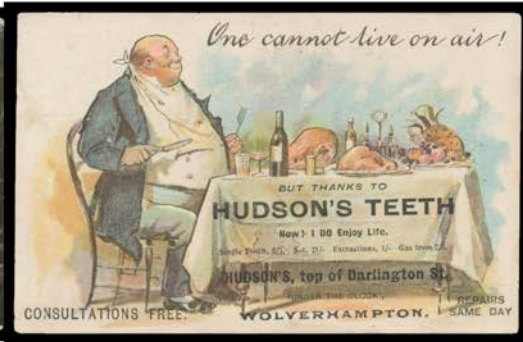
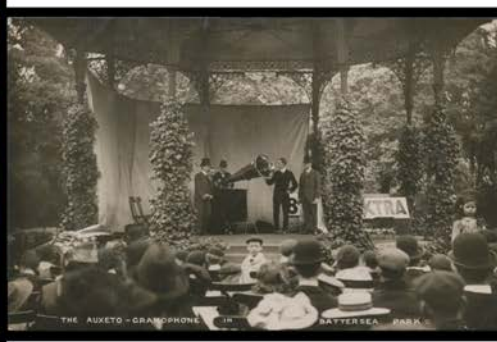
Lot Type Grading Description

Est \$A

**GERMANY**

1217 C A/B **1901-30s** batch of commercial advertising cards including illustrated types for *Osram Globes*, *Evans u Pistor*, *Schneider u Döft*, *Gebruder Schwabenland* & colourful *Muchener Hackerbrau-Export Beer* etc, some duplication including of illustrated types, generally fine to very fine used. (57)

200

**GREAT BRITAIN - PICTURE POSTCARDS****Ex Lot 1238**

**1238** CPS **ADVERTISING:** Packet of mostly British cards including "poster" cards for *Horniman's Pure Tea* (KEVII), *Mustad Horse Nails* ("Charged by the Carabiniers"), *Bayonet Point Hat Pins* x2 (sailing & flying), *Schweppes Cider* (quite racy Art Nouveau), *Mellin's Food for Infants from Birth*, *Richmond's Bungalow Cooker* (Art Nouveau kitchen), *London & North Western Railway*, *Skippers Fish Products* x3 & *American Hires' Root Beer* (chromolitho of young girl), others for *Owbridge's Lung Tonic*, *Wheen's London Washer* (unfortunate racism), *Plasmon Cocoa*, *Hudson's Teeth* (seriously!), *Alpha Underwear*, *Star Series of Toy Books*, *Regina Shaving Stick* (more than a little "gay"), *Ovoline Oils & Greases*, "Ticka" *Tiny Camera* (illustrated both sides, including actual *Ticka* photos) & German chromolitho for *Mattoni's Giessübler Spa Water* (used in Belgium), superb *real photo* types for the *Auxeto Gramophone* in *Battersea Park* x2 & in *Queen's Park Manchester* x2, 1908 Franco-British Exhibition cards for *Kitson Empire Oil Light* and *Thorley's Food for Cattle*, also 1/2d Stamped to Order Postal Card for *Wright's Coal Tar Soap* & standard 1/2d card overprinted for *Lindsay & Low Chocolates*, etc, generally fine to very fine. *Ex Keith Harrison*. (41)

1,250<sup>T</sup>**PORTUGUESE COLONIES****Lot 1403**

**1403** PS A- **AZORES:** 1894 usage of 'ANGRA' 25r blue-green Envelope with local stamp dealer's imprint at upper-left, to NSW uprated with 25r & 100r tied by 'CORRO e TELLO/23JAN94/ANGRA do KEROIMAO' (?) cds, red/buff registration label - fault - with manuscript "Angra", New York & unusual 'SAN FRANCISCO CAL/FEB 7 1894/REGISTERED.' b/s, San Francisco exchange office registration label, Sydney transit b/s of MR8/94 & Bathurst arrival b/s, a couple of very minor defects. A truly remarkable origin/destination item; we have never seen an Australian cover to any of Angra, Horta or Ponta Delgada, and this is the only item recorded by us from any of these islands.

300