

Lot Type Grading Description

Est \$A

COMMONWEALTH OF AUSTRALIA - Flight Covers

Lot 735

735 C A 1932 (Dec) Bertram Atlantis Expedition cover with "propellor" cachet at lower-left, carried from Melbourne to Darwin where registered for return to Victoria, signed by the pilot "Hans Bertram". Ex John Sussex.

500



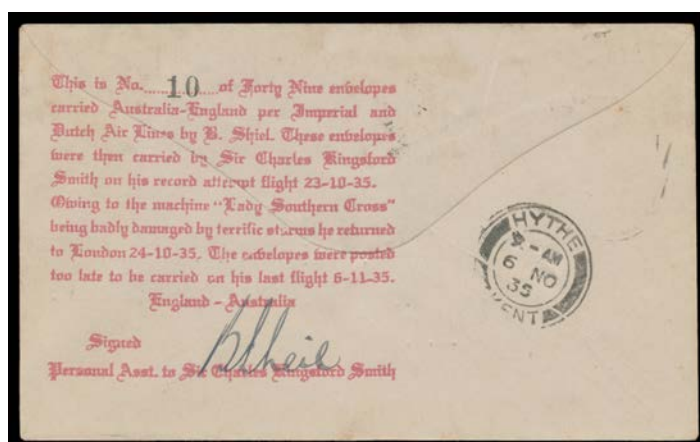
Lot 736

736 C A 1933 (Mar 26) New Zealand-Sydney per "Southern Cross" #299 being an illustrated hotel cover with 'WAIPAPAKAURI' cds & Australian 2d cancelled on arrival at Sydney, signed by the pilot "CKingsford Smith", Cat \$1000. A beautiful cover.

600

737 C A/B 1934 (Nov 28-30) Royal Visit flight Sydney-Lismore [#190/200] and Sydney-Newcastle [#48/200] per "Faith in Australia" while carrying the Duke of Gloucester AAMC #465 & 467, both signed by the pilots "GU Alan", "B Sheil" & "RN Boulton". [Stated to be the first occasion any member of the British Royal Family piloted an aeroplane: the Duke was at the controls between Coffs Harbour & Newcastle. Ex John Sussex. (2)

300



Lot 739

739 C A- 1935 (Oct 23) GB-Italy-GB-Australia per "Lady Southern Cross" AAMC #545) flown by Charles Kingsford Smith and Tommy Pethybridge but the flight was aborted over Italy, and the plane returned to England from where the covers were subsequently re-sent to Australia, posthumous handstamped explanation on reverse signed by "BSheil", Cat \$650. [No.10 of 49 flown]

400

FORCES IN EGYPT



Ex Lot 798

798 C

CACHETS IN LIEU OF CENSOR CACHETS: Group of mostly postcards with cachets comprising large boxed 'BASE DETAILS PO/...' in blue, 'AUST IMP FORCE/FREE/INTER BASE' & 'AIF/FRANKED/ON ACTIVE SERVICE' with mss 'DB Blackwood/(Capt AIF)'; **Officers' Handstamps** '...Brigade Major/6th Infantry Brigade/AIF' & '...Colonel/Commanding 6th Inf Brigade/AIF'; **Regimental Handstamps** '5th TRAINING BATTALION/...' in violet and similar for the 6th in blue & 8th in red, '27th BATTALION AIF/...7th INF BDE', superb '2nd LIGHT HORSE BRIGADE TRAIN AIF/...' in blue, oval 'FRANKED/By.../FOR OC LH RES REGT/...' in violet & triple-oval '9th LIGHT HORSE REGT/...' d/s in violet; and **Hospital Cachets** 'FIRST AUSTRALIAN GENERAL HOSPITAL/...', oval 'AUS GENERAL HOSPITAL/No 3' & '.../No 9', 'CONVALESCENT ___/RAS-EL-TIN' (with 'HOSPITAL' excised) & 'AUSTRALIAN & NEW ZEALAND/.../CONVALESCENT HOSPITAL'; condition variable but the strikes are generally fine to very fine. (17)

600



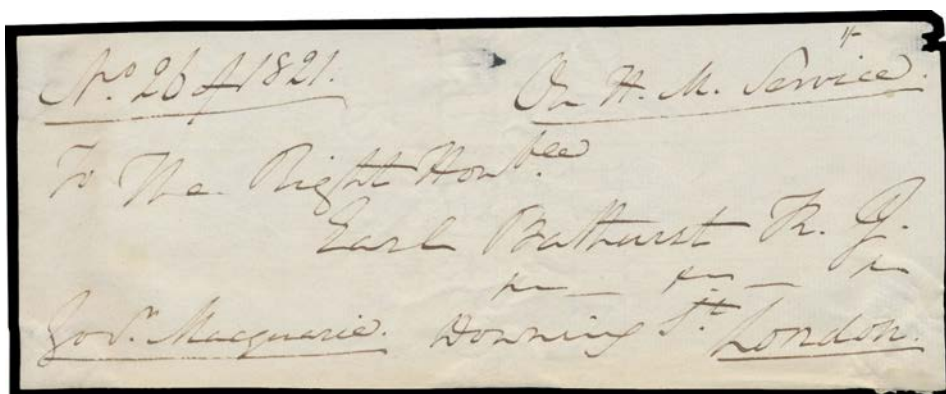
Ex Lot 799

799 C A/B

INDIAN FIELD POST OFFICES: Mail from Australian soldiers comprising PPC with Indian IEF 2a6p tied by 'FPO/No 32' cds used at Ismailia & superb Indian Censor #75 cachet in rosin; Indian Field Service Postcard multi-response type in Hindi (?) but with message in English & IEF 1a tied by 'FPO/No 313' cds used at Ismailia; cover with 'FPO/No 35' b/s used at Alexandria & Indian Censor #84 cachet; and PPC with 'AIF INTER BASE PO/...' cds & Indian Censor #125 cachet; also **Ward Lock & Co** PPC "Defeat of the Turkish Attempt to Cross the Suez Canal", very fine unused. [The Indian 11th & 12th Divisions, supported by Australian units, provided the main defence of the Suez Canal] (5)

250

NEW SOUTH WALES - Postal History



Lot 907

907 CL A-

1821 front from an official outer to Lord Bathurst at "Downing St/London" in Governor Lachlan Macquarie's hand & endorsed by him "Govr Macquarie" at lower-left.

300^T

Lot Type Grading Description

Est \$A

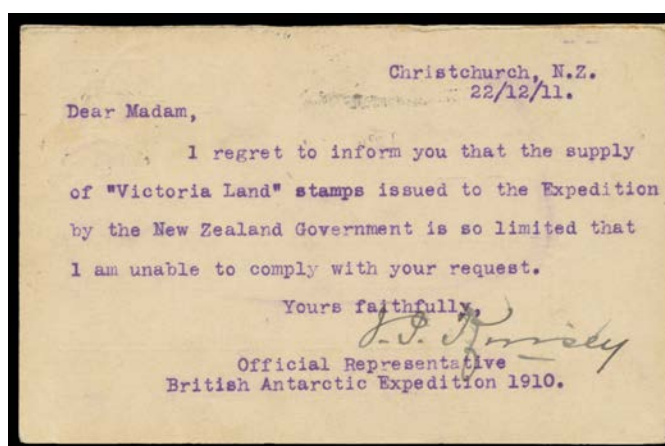
ANTARCTICA**Lot 1144**

1144 C A **AUSTRALIAN:** 1911 Mawson Expedition cover with 'LOOSE SHIP'S LETTER/POSTED IN/ANTARCTICA/[penguin]/SY AURORA/AAE' cachet overstruck with 'AUSTRALASIAN ANTARCTIC/EXPEDITION 1911/("JK Davis")/COMMANDER OF SHIP', to *JJ Kinsey* in New Zealand with Tasmanian 1d & Hobart cds of 11MAR13.

"Aurora" returned to Antarctica in December 1912 to collect *Douglas Mawson* & his party. However, *Mawson* with *Xavier Mertz* & *Belgrave Ninnis* had set off in the same month on the *Far Eastern Expedition*. 300 miles out, *Ninnis* fell to his death in a crevasse, taking with him most of the group's food. The others turned back, supplementing their meagre rations with meat from their dogs. When *Mertz* also died, *Mawson* used a pocket-saw to cut his sled in half & dragged it the final 100 miles. The return trek took 55 days. He arrived to see the "Aurora" departing for Hobart! A rescue team of 6 left behind to search for the trio nursed *Mawson* back to health. They were picked up on the "Aurora's" return on 12/12/1913! By then, the radio operator had "lost his marbles". *John King Davis* was captain of the "Aurora" and *Mawson's* second-in-command.

2,500^T

1150 C/L A **GERMAN:** 1906 German cover with brief letter headed "Charlottenburg 16.III.06 & signed "v Drygalski". [*Erich von Drygalski* was leader of the 1901-03 German South Polar Expedition in his ship "Gauss"] (2 items)

200^T**Lot 1151**

1151 PS A **NEW ZEALAND:** 1911 return usage of German (10pf+)10pf Reply-Half unnecessarily with New Zealand ½d & 1d pair added, the message states "...the supply of Victoria Land stamps...is so limited that I am unable to comply with your request" & signed "JP Kinsey" over 'Official Representative/British Antarctic Expedition 1910'. Very unusual.

500^T

Lot Type Grading Description

Est \$A

UNITED STATES OF AMERICA



Lot 1431

1431 CL **FLIGHT COVERS:** 1935 (Jan 11) Honolulu-Oakland cover (241x114mm) endorsed "Carried by air/..." and signed by the pilot "Amelia Earhart" at upper-left and "No.34 of 49 covers" at lower-left, small repaired tear at right. [Amelia Earhart was the first woman to make this non-stop flight solo. She was one of the most illustrious aviators of the pre-WWII period]

1,500