

Lot	Type	Grading	Description	Est \$A
-----	------	---------	-------------	---------

NEW SOUTH WALES

885	F	A B1	1897 Charity (Consumptives Home) 2/6d SG 281 tied to philatelic cover - minor blemishes - by 'PETERSHAM - 303' duplex & 'NEWTOWN' cds, Cat £225 x2 on cover.	300 ^T
-----	---	------	---	------------------

NEW SOUTH WALES - Postal History

913	C	B	1879 mourning cover to Denmark with De La Rue 2d (folded over the top of the envelope) & 6d tied by '26AU/79 - 914' duplex, Sydney transit b/s & '1½D' h/s in purple, London transit & 'ODENSE' arrival b/s, minor blemishes.	180
-----	---	---	--	-----

**Lot 915**

915	C	B	1901 cover to the NSW Mounted Infantry Quartermaster in South Africa with ½d & 2d tied by 'WEST MAITLAND/NSW - 64' duplex, Sydney transit b/s, minor blemishes. Inwards mail to the Australian troops during the Boer War is rare.	400
-----	---	---	---	-----

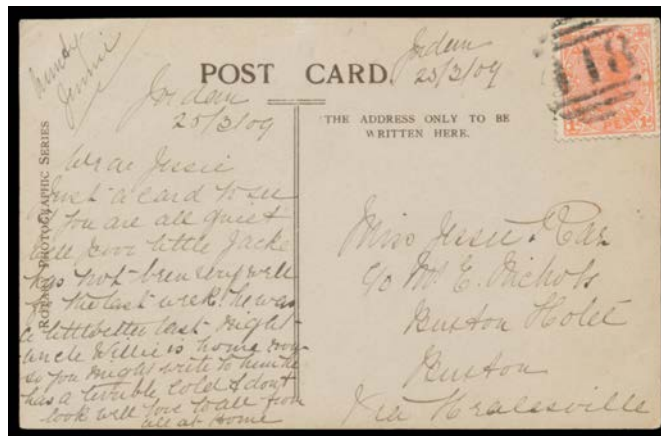
VICTORIA - Revenues

1102	C	B	STAMP DUTY - IMPRESSED: Embossed Stamp Duty cut-outs 6d & 9/- both in rose-pink affixed to local 1893 philatelic covers & tied by Melbourne duplex, minor blemishes. Unusual. (2)	100 ^T
------	---	---	--	------------------

VICTORIA - Postal History**Lot 1111**

1111	C	B	1874 unusual style of mourning cover to Carmathenshire (Wales) with Laureates 6d only tied by 'EMERALD HILL/VICTORIA - 148' duplex, Melbourne b/s where a very fine strike of the small boxed 'INSUFFICIENTLY PAID/VIA BRINDISI' h/s applied, minor blemishes & unfortunate docketing on the face.	750 ^T
------	---	---	---	------------------

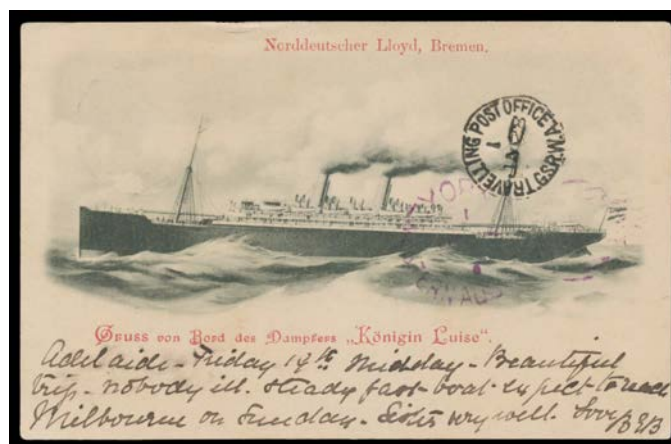
VICTORIA - Postmarks



Ex Lot 1116

1116 CPS **BARRED NUMERALS:** Album of mostly Postal Cards & PPCs with an apparently all-different collection, some CDS & PPC interest, many attractive &/or scarce "ties" including '418' & manuscript "Jordan/25.2.09", '680' & 'GHERINGHAP' cds, 'MCC/65' & 'BULN BULN EAST' cds, well above-average 'MCCC/16' & superb 'KORNHEIM' cds, 'MCCC/87' & 'HOWES CREEK' cds, '1704' & 'ARDNO' cds, '1784' & 'TANKERTON' cds (French Island), '1857' & 'PARADISE' cds, '1892' & 'WARNCOORT' cds, etc, condition & quality of the strikes both variable. **(250 approx)** 500

WESTERN AUSTRALIA - Postal History



Lot 1140

1140 C A- **1900 Norddeutscher Lloyd** PPC of "Königen Luise" with German 10pf tied by poor Seepost cds, to York with superb 'TRAVELLING POST OFFICE/ 1 JA28/-/GSR WA' cds (no year slug) & light 'YORK' arrival duplex in purple. 200

GREAT BRITAIN - Postal History



Ex Lot 1244

1244 C **POSTMARKS:** Three volumes of PPCs all selected for the postmarks with two volumes of mostly duplex cancellations & one volume of squared-circle datestamps plus a selection of *Mobile Boite* dock-side usages, numerous very fine to superb strikes, many cards are used from the towns depicted, many better cards with some Undivided Backs including one with photo affixed to the view-side, many towns & villages, smaller churches, Cornwall & Wales, etc, advertising cards for P&O x2, "The Great Anglican Gathering" & *Booth Line of Royal Mail Steamers*, a few humour including a marvellous Cycling Accident by "Cynicus" & one with a circular message, condition variable. An excellent lot especially for the possibility of finding Earliest Recorded Usages. **(100s)** 750