

Lot Type Grading Description

Est \$A

NEW SOUTH WALES**Lot 886**

886 P A **1897-99 Diamond Jubilee** 1d + 2d + 2½d (sideways) composite die proof in deep brown on highly surfaced stock (143x94mm).

400

**Lot 887**

887 * A - 1d rose-carmine **Die II** marginal horizontal pair from the left of the sheet *Imperforate at Left*, large-part o.g. Much scarcer than the *Imperforate Three Sides* errors.

400

**Lot 890**

890 * A **1899 Chalk-Surfaced Paper** 1d salmon-pink *Imperforate* block of 4 SG 301a, margins close to good, Cat £550+ (for two pairs). [Blocks of 4 are much scarcer than pairs]

400

894 * A- B1 **1905-10 Small Crown/A** 1d rose-carmine with *Double Impression* BW #N12c (SG 334a), hinge remainder, Cat \$500 (£475).

200^T

Lot Type Grading Description

Est \$A

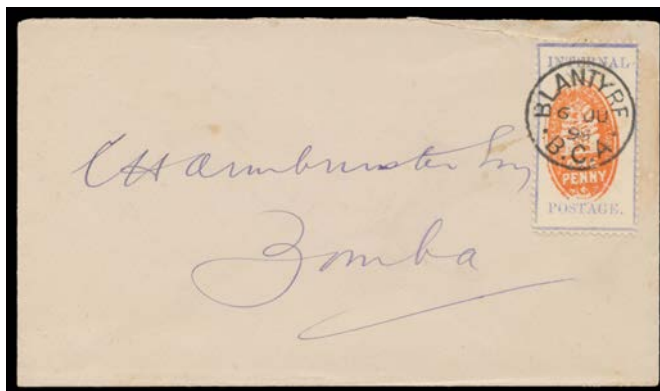
QUEENSLAND - Postal History

952	C	C	1900 from the Boer War endorsed "From Trooper N Carhale [?]/No 250 3rd QMI" (= <i>Queensland Mounted Infantry</i>) with space at lower-left for an officer to countersigned but left blank, Transvaal VRI 1d tied by British 'ARMY PO 55/OC11/00/S.AFRICA' cds, Brisbane transit & 'CHARLEVILLE' arrival b/s, overall soiling.	200
-----	---	---	--	-----

MAURITIUS

Lot 1308

1308	*	A B1	1921-26 Arms 50r dull purple & green SG 222 with 'SPECIMEN' Overprint, Cat £400.	300
-------------	---	------	---	-----

NYASALAND

Ex Lot 1369

1369	*OCPS		Selection with 1895 No Wmk Arms to 3/- with 'SPECIMEN' Overprint plus 2/6d to £1 with 'SPECIMEN' Handstamp, 1897-1900 Redrawn Arms used 3/- & 4/-, 1898 'INTERNAL/POSTAGE' Imperf x3 & Perf 12 x3 (one on 1898 cover from 'BLANTYRE' with 'ZOMBA' b/s), 1950 Postage Dues mint (VLMtd), a few condition issues, also BCA Postal Cards x4 & Wrapper all with 'SPECIMEN' Overprint & very fine. (38 + covers)	800
-------------	-------	--	--	-----



Ex Lot 1370

1370	**	A-/A+	1896 Arms with Watermark 1d to £1 SG 32-40 plus the rare £10 & £25 (a few short perfs) SG 41 & 42 all with 'SPECIMEN' Overprint, full unmounted o.g. (!), Cat £1150 (mounted). Remarkably fresh & rarely available as a complete set, in any condition. (11)	1,000
-------------	----	-------	--	-------



Ex Lot 1371

1371	*	A/A-	1897-1900 Redrawn Arms 1d to £10 SG 43-52 plus 1901 New Colours 1d 4d & 6d SG 57d-58 all with 'SPECIMEN' Overprint, a few trivial blemishes, large-part o.g. & most are lightly mounted, Cat £815. (14)	500
-------------	---	------	---	-----

Lot Type Grading Description

Est \$A

RHODESIA**Lot 1408****1408** V

A A1

NORTHERN RHODESIA: 1964 commercial airmail cover to Durban with terrific franking of QEII Arms 4d green with the *Denomination Omitted* SG 79a - exceptional centring - tied by 'CHOMA 3/21AUG64/N RHODESIA' cds, a few trivial tonespots, Cat £500 plus a significant premium for being used on cover.

400