

Lot Type Grading Description

Est \$A

**COMMONWEALTH OF AUSTRALIA - General & Miscellaneous Lots**

Ex Lot 536

<b>536</b>	*OV		Collection on huge French pages with CTO material including Roos First Wmk to 5/- (rounded corner) & a defective £1, Engraved duo, KGV to 5d x2 & Postage Dues 1909 set to £1, other pickings including Roos Second Wmk 2/- perf 'OS' VFU, 1934 Hermes No Wmk mint, Robes <i>Thick Paper</i> £1 **, 'OS' Overprints to 1/- mint, etc, condition a bit mixed. (160+)	850
------------	-----	--	---	-----

**COMMONWEALTH OF AUSTRALIA - Postage Dues**

692	*/**	A/A+	Annotated range of <i>John Ash Imprint</i> blocks of 4 (mostly) or 8 from various issues with values to 1/- x2, a few varieties noted, generally very fine to superb with many units being unmounted. Good lot for the specialist. (30)	600 <sup>T</sup>
693	**/*O		Ex-dealer's stock arranged by SG numbers with monocolours to 10d, & bicolours to 5/-, with many blocks and part-sheets, some unmounted. (100s)	300



Ex Lot 694

<b>694</b>	*	A B1	1902 Blank Tablet ('NSW' Removed) ½d to 5/- complete, the 5/- top value with <i>Traces of 'NSW' Evident</i> BW #D11f (Cat \$500), Cat \$850. (8)	400
------------	---	------	--	-----



Ex Lot 695

<b>695</b>	F	A	- 1d Perf 11x11½, 2d Perf 12 & 2d Perf 11x11½ all with the <i>Watermark Inverted</i> BW #D3 5a (unpriced used in the ACSC) & 6a, cds cancels, Cat \$650 + #D5a. (3)	500 <sup>T</sup>
696	G	A B1	1902-04 Completed Design ½d emerald Perf 11 with the <i>Watermark Inverted</i> BW #14A, cds cancel, Cat \$375.	150 <sup>T</sup>



Lot 697

<b>697</b>	Ω	C B1	- 20/- dull green BW #D45, small thin, unused, Cat \$6500. <i>BPA Certificate</i> (2008). A presentable example of this rare stamp.	1,500
------------	---	------	---	-------



Lot 698

**COMMONWEALTH OF AUSTRALIA - Postage Dues (continued)**

Lot	Type	Grading	Description	Est \$A
698	G	A B1	1906-08 Small Crown/A 1d dull green Perf 11 with the <i>Watermark Inverted</i> BW #48a, bars cancel, Cat \$2000. Rare.	750 <sup>T</sup>
699	**/*	A	1907 Crown/Double-Lined A 1/2d dull green with the <i>Watermark Inverted</i> (as usual) BW #D56 marginal block of 48 from the top of the left-hand pane (6x8), some minor perf separation/rejoining, most units are unmounted, Cat \$3000++.	750 <sup>T</sup>
700	*	A C1	- 6d dull green BW #D60, Cat \$475.	200 <sup>T</sup>



Lot 701

701	F	A B1	1909-10 Victorian Design on Thick Paper 10/- & £1 BW #D91 & 92, both with 'PRIVATE BOX ROOM/MELBOURNE VIC' cds, Cat \$800.	400 <sup>T</sup>
702	**/*	A/A+	1922-30 Third Watermark 1d carmine & yellow-green BW #D106 complete right-hand pane of 60 (6x10) divided into two blocks of 30, plus lower-half of the left-hand pane, with listed varieties, most units are unmounted, Cat \$1800++.	450 <sup>T</sup>
703	*/**	A	- 1 1/2d carmine & bright yellow-green <i>AJ Mullett Imprint</i> block of 4 (lower units unmounted) & 1 1/2d carmine & yellow-green <i>John Ash Imprint</i> block of 4 (unmounted) BW #D107za & zb, Cat \$550 (mounted).	300 <sup>T</sup>
704	*/**	A	- 1 1/2d carmine & bright yellow-green <i>AJ Mullett</i> printing (some minor perf separation, most units unmounted) & 1 1/2d carmine & yellow-green <i>John Ash</i> printing (unmounted) BW #D107B & C complete sheets of 120 with full imprints, Cat \$3000++.	500 <sup>T</sup>
705	G/F	A B1	1931-36 CofA Wmk Perf 11 3d BW #D118 (SG D108) block of 8 (2x4) with 'CANTERBURY/9JE38/NSW' cds, Cat \$800+ (£560+). A very scarce large multiple.	350



Lot 706

706	**	A B1	1946-57 Redrawn Frame Plates 7d carmine & yellow-green <i>Authority Imprint</i> block of 8 (4x2) from the <i>Ash Plate with Dot below the Imprint</i> BW #D136zb, well centred, unmounted, Cat \$750+. The ACSC states "Rare".	500
-----	----	------	--	-----

Lot Type Grading Description

Est \$A

**COMMONWEALTH OF AUSTRALIA - Postal History****Ex Lot 713**

**713** C/CO Selection of taxed mail with a few pre-WWII items, 1957 irregular usage with Revenues, several Business Reply Paid cards with values to 2/- including a 1/- block of 4 (damaged), etc, condition variable. **(28 items)**

500

**Ex Lot 718**

**718** C A/B **1901-18** commercial covers to the United States including 1901 Boer War patriotic cover, 1905 registered with SA ½d 2d & 3d, 1913 with superb 'VICTOR HARBOR/SA' squared-circles & small 'Victor Harbor' h/s on large registration label, 1915 double-rate with KGV 1d red & 4d orange, 1918 two underpaid to screen actress *Mary Pickford* but the fines apparently not collected, Nov 1918 taxed for unpaid War Tax, 1920 with War Tax paid, etc, several other WWI covers with various censor handstamps, generally fine to very fine. **(14)**

500

**COMMONWEALTH OF AUSTRALIA - Flight Covers****Lot 734**

**734** C B **1928** (Oct 13) Blenheim-Sydney First Trans-Tasman Flight from New Zealand AAMC #126 stampless with 'BLENHEIM/12OC28 630AM/NZ' cds & poor tax h/s, endorsed "Per favour of/Squadron Leader Kingsford Smith/in the Southern Cross Sept 1928", "DELIVERY ROOM/9A 24OC28/GPO SYDNEY" b/s & Postage Due 1d pair tied to the face by two further strikes two hours later, minor blemishes, endorsed "Guaranteed [sic] flown/FJField" on reverse, Cat \$NZ2000+ (1994), AAMC \$4250 (2008). A remarkable cover. *Ex Jim Stapleton*: sold at the *Prestige* auction of 7/7/2007 for \$2185. *RPSofL Certificate* (1973). [The AAMC states that only 16 covers were flown]

1,500<sup>T</sup>

Lot Type Grading Description

Est \$A

**THE TROOPSHIPS - THE FIRST and SECOND CONVOYS**

Michael Blake has done personal research into the ships and the soldiers who sent the mail. This valuable background information has been retained with the various lots.



Ex Lot 788

788

C

**FIRST CONVOY:** Bagged cover cancelled & taxed on arrival at Melbourne with the letter headed "SS Katuna" (A13); Adelaide YMCA illustrated cover with Fremantle machine & incorrectly with 'T/10' h/s intended for use on overseas mail, from either "Ascanius" or "Medic"; PPC of "Argyllshire" (A8) with KGV 1d red & Albany WA cds, light 'FIRST FIELD ARTILLERY BRIGADE/...' cachet in violet; entire with lengthy letter headed "SS Hororata/Just past Eucla SA...", weak Albany cds, Melbourne tax h/s & rare franking of Postage Due 1/2 pair, stained on the face & the flap re-attached); PPC of "TSS Euripides" (A14) with superb '1st AUST INF BDE FIELD PO/26OC14' cds & superb 'MORE TO PAY/1D' h/s applied at Sydney; cover probably from "Benalla" (A24) stated to have been embargoed at Albany; and cover endorsed "Transport A6..." ("Clan MacCorquodale") with Albany cds & Perth machine; also pre-War PPC of "RMS Orvieto"; condition variable but generally fine to very fine. **(9 items)**

400



Lot 789

789

C

B

- Illustrated Brisbane YMCA postcard with printed 'Troopship RANGATIRA' (A22), to NSW with Perth machine of 16NOV14 overstruck with Sydney machine of NO26-1914, tax h/s & 1d Postage Due, redirected to Melbourne, minor defects. ["Rangatira" departed Albany 1.11.2014, indicating this card was embargoed. Letter states "...we have just been informed that all our mail matters is under a strict censorship...Our Band...is to make its debut at the end of the week..."]

The sender, *Herbert Birch*, was wounded at Gallipoli & returned home on the "Aeneas" in -.10.1915.

400

**THE TROOPSHIPS - THE FIRST and SECOND CONVOYS (continued)**

Lot Type Grading Description

Est \$A

**Lot 790**

**790** C B - OAS cover with very fine triple-oval '1ST FA BDE AMN COL/AUSTRALIAN IMPERIAL FORCE' (Ammunition Column) cachet in violet & Albany cds of 29OC14, to Sydney with '1D'-in-circle h/s & Postage Due 1d tied by Sydney cds of 2NO14, minor opening fault & soiling on the reverse not affecting the very fine appearance. [Bob Emery listed this cachet as CA74, & noted one example of 1.12.1914, after arrival in Egypt. This cover proves it was manufactured in Australia]

Gary Diffen, in "Philately from Australia" (Sep 2015) stated that Unit Handstamps used in this manner - common practice in Egypt - were *in lieu of censor handstamps*. We agree: this cover's short transit time to Sydney shows it was not embargoed, having been accepted as having been passed by a censor]

500

**Lot 791**

**791** C A- - Western Australian PPC ("Mount Clarence, Albany") with Albany cds of 28OC14 & 'T' h/s plus superb strike of the rare fancy-framed 'PASSED/...' handstamp in violet, to Adelaide where 'T1D' h/s applied. 150

**792** C C - Use of Adelaide YMCA postcard with lengthy message headed "Aden", from "Ascanius" (A11) to South Australia but with Sydney machine of DE21-1914 & '1D'-in-circle h/s, rather battered with reinforced central fold & creasing. [At Aden, the troops were advised that mail sent from there to Australia would not be censored & that they could write whatever they liked! This consequently fascinating communication states "...We had a collision with the *Shropshire* we are lucky to be on here to write about it...it was a close thing I can tell you" and "we witnessed the fight between the *Sydney* and the *Emden* it was great the *Sydney* fixed her up in twenty minutes...". Despite the tone of the letter, after leaving Colombo, it was "Ascanius" that rammed "Shropshire"] 150

**THE TROOPSHIPS - THE FIRST and SECOND CONVOYS (continued)**

Lot Type Grading Description

Est \$A



Ex Lot 794

794	C		- Picture postcards of the ships comprising "Geelong" (Troopship A2) <i>real photo</i> dated Oct 20th, unused; "Orviato" (A3) pre-War card with 'HMAAT Orviato A3 Xmas 1914/Printed at Sea' overprint, minor faults; "Shropshire" (A9) pre-War card with 'HMA Transport No 9' overprint, superb Melbourne cds & 'T1D' h/s; "Karoo" (A10) advertising card for <i>WG Deuchar Shipping Agent</i> !, unused; "Ascanius" (A11) "Departure of South Australian Infantry!...20th October 1914", unused; "Hororata" (A20) used from Albany with superb 'T1D'-in-oval h/s; also <i>Patriotic Series</i> of Cruiser "HMAS Sydney" (unused) & New Zealand <i>William Nees real photo</i> "Japanese Battleship <i>Ibuki</i> Convoy" (used under cover); generally fine to very fine. (8)	350
795	C	A-/B	<b>SECOND CONVOY:</b> Picture postcards of the ships comprising "Berrima" (A35, to Tasmania with manuscript "1d To Pay", and to Adelaide with 'T1D' h/s & very late irregular usage at the GPO of Diamond-Numeral '64'), "Ulysses" (A38, used later in the War), "Ceramic" (A40, with Brisbane arrival cds of 19FE15 so not taxed; and pre-War card with Christmas/New Year greetings on the reverse & imprint 'Printed on Board Troopship A40 by the DAP Press', unused), and "Kyarra" (A55, pre-War <i>AUSN</i> card used under cover, also a photograph 100x75mm as Hospital Ship with a Line of Ambulances on the Wharf & dated 4.12.14), three with the ships' names erased. [NB: from 11.2.1915, postage on OAS mail was free] (7)	200

**PREPARATIONS ON LEMNOS**

804	C	(A-)	<b>BRITISH CENSOR CACHETS:</b> 1915 (Apr 18) OAS cover with very fine 'AUST & NZ ARMY CORPS/HEADQUARTERS/FIELD PO' cds & superb boxed Censor No 2208 h/s in rosine, to Switzerland with Zurich arrival b/s, superb 'T' h/s & mss "20" in blue, Swiss Postage Due 20c tied by Zurich cds, minor repaired tear at the top. [Free postage extended only to British Empire destinations]	200
-----	---	------	--	-----

**NEW SOUTH WALES - Postal History**

Lot 911

911	C	C	<b>1859</b> large-part outer to the Philippines with Imperf <i>Diadems</i> 1/- pale red x2 (one almost very fine, the other a little cut-into) tied by 'NSW'-in-concentric-ovals cancels of Sydney (b/s), largely very fine 'MANILA/31/DIC/1859/ISS FILIPS' arrival b/s, a bit aged, the two panels separated & rejoined with archival tape.	400
914	C	B	<b>1897</b> cover - reduced at left - with 1d pair only tied by Sydney duplex, superb boxed 'DEFT 2D/FINE 2D - 4D' h/s, NSW Postage Dues 2d x2 tied by two light strikes of the rare oval 'MOO & GSB/15MAR97/NARRANDERA' d/s in red, minor blemishes.	250 <sup>T</sup>
919	C	B	<b>1904 &amp; 1907</b> PPCs from Tonga or Fiji each with 1d cancelled at Sydney & with oval 'SHIP LETTER/ 1D /LATE FEE' handstamp, the first with CofA Postage Due 1d added, the second with message headed "SS Suva", a bit aged.	200

Lot Type Grading Description

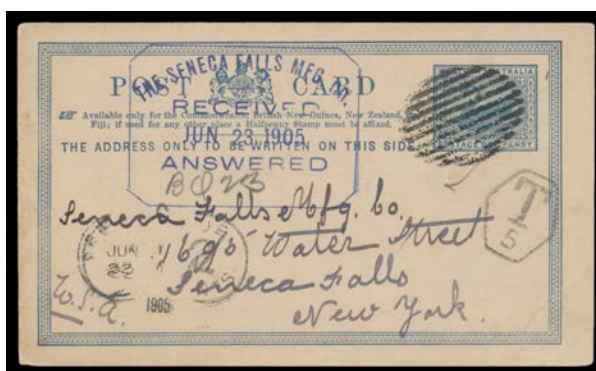
Est \$A

**VICTORIA - Postal History**

Lot 1107

**1107** C B 1853 (Sep 21) mercantile entire to New York "p Victoria" with *Half-Lengths* 3d (3 large margins) tied by Barred Oval '1' of Melbourne (d/s alongside), London transit b/s of 12DE12/1853 in red, rated mss "16" & superb American '37' h/s, 'NEW YORK/DEC/26/AM PKT' arrival cds, horizontal filing crease. Not recorded in *Ben Palmer's Census*.

500

**WESTERN AUSTRALIA - Postal History**

Lot 1142

**1142** PS B 1905 (c. April) usage of 1d Postal Card with message headed "Bullingarra/Wannamal Siding/Mid Rail", to New York with 11-bars cancel probably of Wannamal & 'T/5' h/s, lightly stained on the reverse. Unusual & remote rural origin. [Wannamal (1) RO opened 16.3.1905; to PO 15.4.1905. The first cds is recorded from 17.9.1906 only]

300<sup>T</sup>**HONG KONG**

Ex Lot 1253

**1253** \* A B1 POSTAGE DUES: 1923 1c to 10c SG D1-5 complete with 'SPECIMEN' Overprint, Cat £425. (5)

300

**MALAYA - Japanese Occupation**

Lot 1300

**1300** \*/\*\* A C1 **MALACCA:** 1942 Boxed Handstamp in Rosine on Malayan Postal Union Postage Dues 12c dull blue SG JD15 block of 8 (2x4), minor characteristic tropicalisation, five units appear to be unmounted, Cat £7200++ (as singles). A very rare & desirable multiple. [Remarkably, the upper vertical pairs bear the right-half & left-half of the handstamp but the lower block of 4 is struck with a complete impression of the handstamp!]

8,500<sup>T</sup>**NEW HEBRIDES**

Ex Lot 1347

**1347** \* A B1 **1925 Dual Currency Arms** ½d (5c) to 5/- (4fr25c) SG 43-51 plus the Postage Due set SG D1-5 all with 'SPECIMEN' Overprint, Cat £400. (14)

300



**NEW HEBRIDES (continued)**

Lot Type Grading Description

Est \$A

**Ex Lot 1349**

**1349** \* A B1 **FRENCH:** 1925 Dual Currency Arms 5c (½d) to 5fr (4/-) SG 42-52 plus the Postage Due set SG FD53-57 all with 'SPECIMEN' Overprint, Cat £500. (16) 350

**NEW ZEALAND**

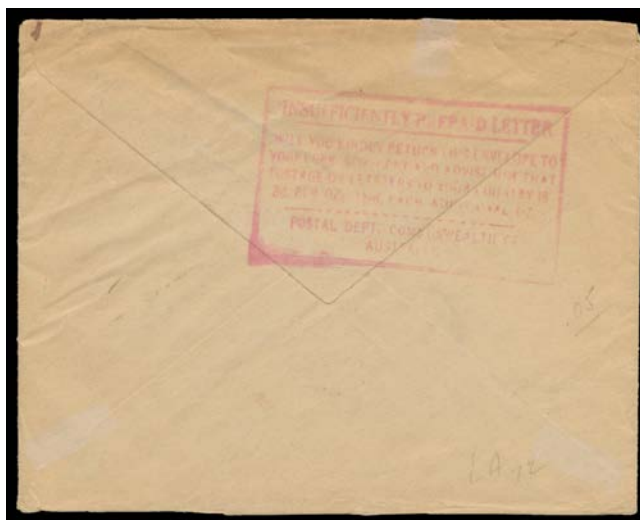
1362 C A **POSTAGE DUES:** 1939 stampless philatelic covers each with 'PORANGARAU/15AU39/NZ' cds & 'TO PAY/("2d")...' h/s, Second Type Postage Dues ½d strip of 4, 1d pair, 2d or 3d tied by 'WAIPURUKAU' cds of the same date. **Last day of issue:** the Third Type set was issued 16.8.1939. (4 covers) 200

**NORFOLK ISLAND****Lot 1367**

**1367** C A+ **1952** cover to South West Africa (!) with 5½d only tied by superb 'NORFOLK ISLAND/AUST' cds, very fine rubber ("8")/TO PAY' h/s, SWA 2d & 6d Postage Dues tied by superb 'AUS' cds. Superb! 250

**PAPUA - Postal History**

1389 C B **1927** PPC from Japan sent as Printed Matter with 2s stamp on the viewside, 'THURSDAY ISLAND' transit & 'SAMARAI' arrival cds, 'MISSENT' h/s & redirected to Cairns where 2d Postage Due affixed & cancelled with blue "X", a little soiled. A bit of an enigma. [The card is addressed to Samarai so our vendor ascribed the Missent h/s to Thursday Island. However, we are of the view that it was an irregular redirection usage at Samarai as both the handstamp & the cds are inverted. Roger Lee recorded different Missent handstamps at Samarai in 1906 & in the 1930s. This type would fit between them] 200<sup>T</sup>

**Lot 1390**

**1390** C B **1928** (c.) commercial cover to the USA with 1½d only & Port Moresby cds, at Sydney 'NSW/T/25' h/s in red applied & on the reverse the large boxed 'INSUFFICIENTLY PREPAID LETTER/.../3D PER OZ, 1½d EACH ADDITIONAL OZ' h/s also in red being the only example of such a marking we have seen on a cover from Papua. 300<sup>T</sup>

**SOUTH AFRICA**



**Ex Lot 1420**

**1420** CPS

Commercial mail including Natal 1880 to USA with 1d pair & 6d tied by 'No 4 PO' cds, four Boer War period covers including Transvaal ½d Postal Card to Mozambique & taxed, 1905 PPC from Orange River Colony to "Ujiji/German East Africa" with 'ZANZIBAR' & German 'DAR-ES-SALAAM' transits, 1906 PPC from Johannesburg with large boxed 'POSTAED TOO LATE/ 1 ' h/s, 1917 & 1919 ½d Postal Cards used in SWA with 'OMARURU' or 'TSMEMB' arrivals, 1927 officially registered cover with Postage Dues 2d block of 4 affixed, 1938-62 taxed airmail covers with various 'INSUFFICIENTLY PREPAID' h/s x8, etc, condition variable but most are fine to very fine. (23)

850<sup>T</sup>