

Lot	Type	Grading	Description	Est \$A
-----	------	---------	-------------	---------

### COMMONWEALTH OF AUSTRALIA - Military - World War I

752	PS	A/A-	1916 1d scenic Letter Cards with military views, all different, unused. <i>Ex Michael Blake. (6)</i>	300
755	PS	A/C	- Gratuitous Distribution Letter Cards <b>Type 1 with Poem on the Reverse</b> on grey stock, stained on the reverse but fine facial appearance, unused; and on thick paper with message headed "Tel el Kebir/11.1.16" & '2nd AUST INF BDE FIELD PO/9FE15' cds; plus <b>Type 2 with "2nd AIF EMBARKING"</b> in black on the reverse. on thin paper, unused but the margins removed. Scarce trio. <b>(3)</b>	200 <sup>T</sup>

### COMMONWEALTH OF AUSTRALIA - Postal Stationery

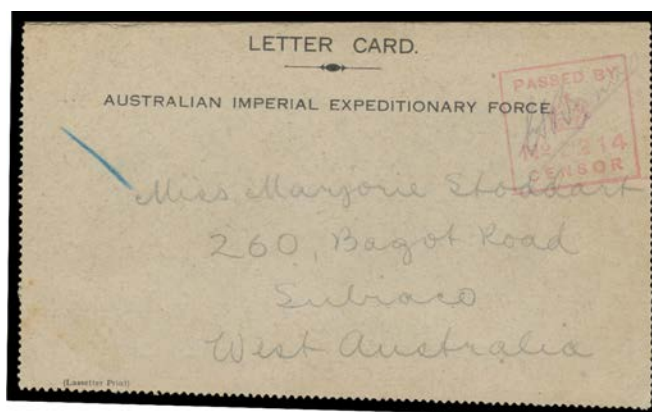
761	PS	A	LETTER CARDS - "MILITARY": 1d carmine on grey surfaced stock #LCM1, unused, Cat \$500.	200 <sup>T</sup>
-----	----	---	--	------------------



Lot 762

762	PS	A/A+	- ditto, 1d carmine on grey surfaced stock #LCM1 a complete pack of 6 with the Post Office band inscribed 'MILITARY LETTER CARDS/Six for 6½d', unused, Cat \$3000+. <i>Ex Tony Finlayson. Very rare in this format, and a wonderful exhibition page. [Barry Scott's band only sold at the Prestige auction of 17/2/2012 for \$1322!!]</i>	2,000 <sup>T</sup>
-----	----	------	---	--------------------

### PREPARATIONS ON LEMNOS



Lot 805

805	PS	A	<b>BRITISH CENSOR CACHETS:</b> 1915 (Apr 21) usage of stampless 'LETTER CARD/AUSTRALIAN IMPERIAL EXPEDITIONARY FORCE' to Perth without a datestamp, boxed Censor No 2214 h/s in rosine. A rare item. [From a member of the <i>3rd Infantry Brigade</i> who states "...the battalion has the honour of breaking the ice for the Australian Division when we do get going...rather in the way of a silver lining to a pretty dark cloud, for it will be pretty rough work..." A classic understatement!]	250
-----	----	---	--	-----

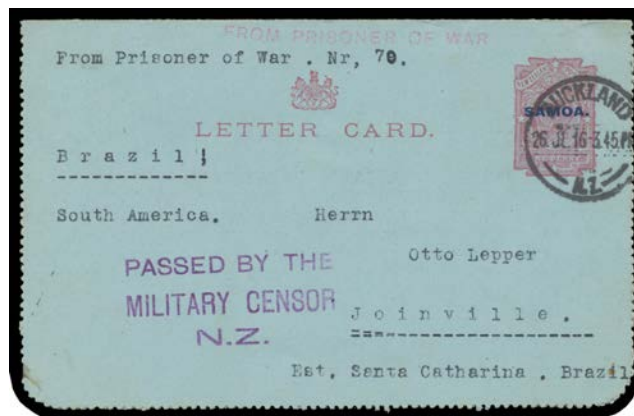
Lot Type Grading Description

Est \$A

**TASMANIA - Postal History****Lot 1061**

**1061** PS B **POSTAL STATIONERY:** 1911 'ONE PENNY' at 40 Degrees on 2d Letter Card HG 6a "MOUNT GOULD - LAKE MARLOW" in claret, minor discolouration on the view side, Hobart machine cancel of 30JAN12. Rare.

750

**NEW ZEALAND - Postal History****Lot 1364**

**1364** PS A- **1916** extraordinary usage of KEVII 1d Letter Card with 'SAMOA' Overprint with letter headed "Motuihi...25 Juli 16" & on the reverse "Prisoner of War.../Motuihi Island...", light but very fine 'FROM PRISONER OF WAR' h/s in rosine & superb 'PASSED BY THE/MILITARY CENSOR/NZ' h/s in violet, **to Brazil (!)** with Auckland cds, Rio de Janeiro two different transits & 'JOINVILLE/4OUT/1916/S CATHA MANHA' arrival b/s, insignificant opening defect at lower-right. A truly remarkable item to a most unusual destination.

750