

Lot Type Grading Description Est \$A

**COMMONWEALTH OF AUSTRALIA - Military - World War I**

748 CPS A-/B Covers (3) & KGV 1d Postal Cards x2 all to Australians known to be POWs at Cassel (2, both with large circular camp cachet), Crefeld, Dülmen or Gottingen, the last forwarded to Dülmen, various British & German cachets, also a stampless PPC from Switzerland to an Australian POW at Friedrichsfeld bei Wesel. Nice group. (6) 350<sup>T</sup>



Lot 750

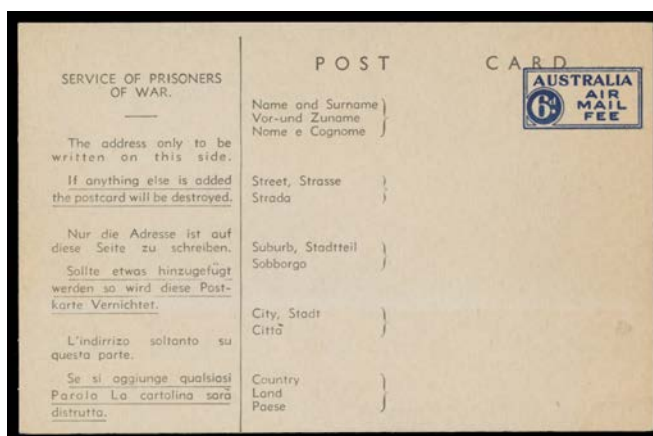
750 PS B 1915 usage of 1d Roo Postal Card with three different Prisoner of War handstamps in green, to West Sumatra but apparently missent to GB where superb 'PRISONERS OF WAR/[crown]/INFORMATION BUREAU' cachet applied, unusual usage of LONDON WC OFFICAL PAID' cds in red indicating POW mail was free, superb 'SIBOLGA' arrival cds, corner bends at upper-right & lower-left. A most unusual POW usage to an unusual destination. [The letter, in English, states "...The number of letters we may write is much restricted but there is no limit for letters from abroad. All the prisoners here have to work 4 hours every day with axe and shovel...The war has cost me...a great deal of money..."] 750

**COMMONWEALTH OF AUSTRALIA - Postal Stationery**



Lot 760

760 PS A+ **POSTAL CARDS:** 1919 'THREE/HALFPENCE' on 1916 1d Die 1 with New Admonition Added (#P27) BW #P50, unused, Cat \$2500. Superb! [The ACSC states "Although there is no record of the number of this card surcharged, it must have been small. At least three [unused] examples are recorded". John Sinfield's unused example sold at the Prestige auction of 8/11/2013 for \$1725] 1,000<sup>T</sup>



Lot 777

777 PS A **WARTIME STATIONERY:** World War II 6d Airmail Postal Card BW #POW1, unused. Unrecorded unused in the ACSC, and the only unused example known to us. 1,500

Lot	Type	Grading	Description	Est \$A
-----	------	---------	-------------	---------

### THE TROOPSHIPS - THE FIRST and SECOND CONVOYS

Michael Blake has done personal research into the ships and the soldiers who sent the mail. This valuable background information has been retained with the various lots.

793	PS	B	<b>FIRST CONVOY:</b> Use of Australian 1d Kangaroo Postal Card with AIF Christmas & New Year greetings printed in red & gold on the reverse, to Sydney with arrival cancel of DE7-1914, minor creasing. [The First Convoy started arriving in Egypt from 2.12.1915. The Sydney postmark suggests the card must have been sent - probably from Colombo - in a sealed bag. However, despite the AIF heading, it may also have originated in Sydney? See <i>Bob Emery</i> at page 138]	100
-----	----	---	---	-----

### PREPARATIONS ON LEMNOS



Lot 806

806	PS	A-	<b>BRITISH CENSOR CACHETS:</b> 1915 (Nov 2) unusual usage of a Greek 10L Postal Card with Censor No 2882 h/s of a British unit counter-signed "JL Anderson" & slightly overstruck with British Army Post Office cds (number illegible), minor blemishes. A marvellous item. [Message headed "Lemnos" & states "Fancy writing Xmas Cards this early...it takes six weeks to reach Australia...Parcels usually arrive a mail later..."]	250
-----	----	----	---	-----

### AUSTRALIAN COLONIES/STATES - General & Miscellaneous Lots

825	CPS	A/B	<b>Queensland Fleet Card CTO</b> (rare thus but stupidly addressed), Victoria STO Envelopes 1901 1d rose for <i>Shire of Colac</i> and 1892 2d rose <i>Error of Colour</i> , & a few covers, condition variable. (9 items)	300
-----	-----	-----	--	-----

### NEW SOUTH WALES - Postal History

905	CPS		Small box of mostly PPCs with a few better views & an attractive 1920s "Sydney of Today" fold-out pack, also 1d <i>Die I</i> , 1d <i>Die II</i> & 1½d scenic Postal Cards used, postmark interest, condition variable. (35)	150
917	PSC	A-	<b>1903</b> New Zealand 1d Postal Card for <i>Union Bank</i> to London with 1d Universal added for late fee, Sydney duplex & boxed 'PAQUEBOT' h/s; and 1912 cover front to London with NZ 1d Dominion x2 tied by Sydney cds, boxed 'PAQUEBOT' h/s & superb strike of the rare 'DETAINED ON BOARD SHIP' h/s also of Sydney. (2)	200

### NEW SOUTH WALES - Postal Stationery



Lot 927

927	E	A-	<b>POSTAL CARDS:</b> 1897 Scenic Issue printer's proof on very thin card with printed banner in red but no stamp & "KATOOMBA FALLS, NS WALES" in black on the reverse, a couple of very minor blemishes. Rare.  A group of 29 of these delightful essays came to light only in 1984, comprising six different designs in a range of colours, some with 'Stamp'-within-a-box printed on the address side. They were almost certainly prepared by <i>William Gullick</i> , the NSW <i>Government Printer</i> . All have minor abrasions on the address side where removed from a reference book.	750
-----	---	----	--	-----

**NEW SOUTH WALES - Postal Stationery (continued)**

Lot Type Grading Description

Est \$A

**Ex Lot 928**

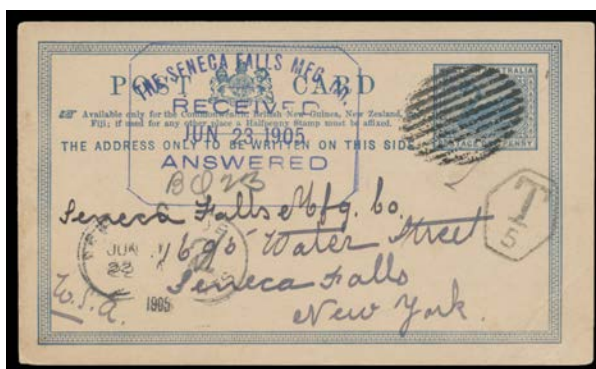
**928** PS A/B - 1897 1d Die I group with "Greetings from", "With Christmas Greetings" x6 (one with Large 'SPECIMEN' Overprint on reverse) & "With New Year Greetings" x5 (one with Large 'SPECIMEN' Overprint on reverse), some minor blemishes - mostly on the address sides - but generally fine to very fine unused. (12)

500

**Lot 929**

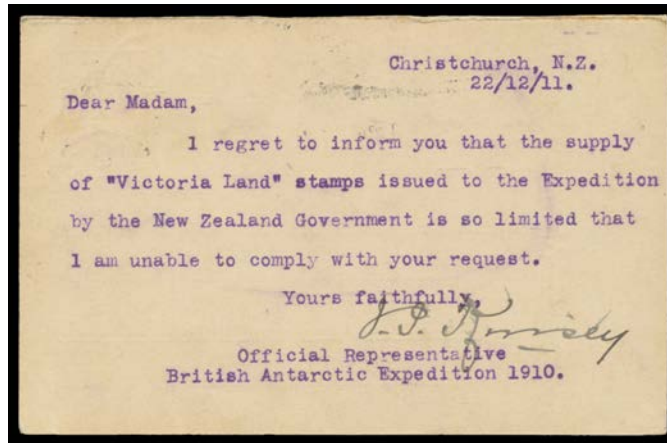
**929** PS B **POSTAL CARDS - STAMPED TO ORDER:** 1907NSW Government Railways 1d with Stamp below Box ("Coast Scene at Clifton...") with superb Sydney cds & light 'OLD GUILDFORD' arrival cds (name changed from Guidford (1) 13.8.1906), minor blemishes. Rare.

200

**WESTERN AUSTRALIA - Postal History****Lot 1142**

**1142** PS B **1905** (c. April) usage of 1d Postal Card with message headed "Bullingarra/Wannamal Siding/Mid Rail", to New York with 11-bars cancel probably of Wannamal & 'T/5' h/s, lightly stained on the reverse. Unusual remote rural origin. [Wannamal (1) RO opened 16.3.1905; to PO 15.4.1905. The first cds is recorded from 17.9.1906 only]

300<sup>T</sup>

**ANTARCTICA****Lot 1151**

**1151** PS A **NEW ZEALAND:** 1911 return usage of German (10pf+)10pf Reply-Half unnecessarily with New Zealand ½d & 1d pair added, the message states "...the supply of Victoria Land stamps...is so limited that I am unable to comply with your request" & signed "JP Kinsey" over 'Official Representative/British Antarctic Expedition 1910'. Very unusual.

500<sup>T</sup>**BASUTOLAND****Ex Lot 1158**

**1158** C A/B **Commercial mail** comprising 1885 with CofGH 2d strip of 3 with untidy cancels & 'MORIJA' cds, 1901 'MAFETENG' to "Tent No 35/POW/Broadbottom Camp/St Helena", 1903 CofGH 1d on 1½d Postal Card 'LERIBE' to France, 1908 CofGH ½d Postal Card 'MASERU' to 'MORIJA' (b/s), 1919 to the USA with superb 'ESHOWE' cds, 1926 & 1927 usages of South African ½d Postal Cards from 'MAFETENG' & 'MOHALES HOEK' and 1959 printed matter rate to USA but with 'Contains writing' h/s & taxed. Nice lot. (8)

650<sup>T</sup>



Lot Type Grading Description

Est \$A

**BRITISH WEST INDIES****Ex Lot 1162****1162** CPS

- Valuable batch of commercial covers from Bahamas x2; Barbados x4 including 1906 registered to Paris with French Guiana return address & Nelson 2d & 2½d; Bermuda x6 with 1921 registered to USA with Tercentenary ½d & 4d; British Guiana x8 with 1901 uprated 1d Envelope with superb 'FORT WELLINGTON' cds, 1967-68 BGuiana 4c Envelope & 6c Aerogramme both uprated with Guyana issues; British Honduras x3 with 1888 5c on 1½d Postal Card to Germany & 1928 uprated Registration Envelope with 'STANN CREEK' cds & label; Caymans x4 with 1924 to Texas with huge US 'REBUTS' h/s & boxed 'RETURN LETTER.../KINGSTON JAMAICA' d/s, & 1945 registered OHMS to Canada; Dominica; Grenada x6; Jamaica x15 including 1892 to France with 'FALMOUTH' squared-circle, 1898 with 'BUFF-BAY' cds, seven advertising covers including 1901 registered to Nova Scotia with light but obvious 'DIRECTOR OF CUSTOMS/Kingston Jamaica' d/s; St Kitts 1883 1½d Postal Card to Germany; St Kitts Nevis x2; St Vincent; Tobago 1909 1d Postal Card with 'SCARBOROUGH/TOBAGO' cds; Trinidad & Tobago x7 with 1937 airmail to Guadeloupe & three different QEII Aerogrammes to Czechoslovakia; and Virgin Islands 1943 airmail Censor cover to New York with 'ROAD TOWN/TORTOLA WI' cds; some scarce KGV I & QEII Postal Cards, condition variable but most are fine to very fine. (62)

1,750<sup>T</sup>

Lot Type Grading Description

Est \$A

**FALKLAND ISLANDS**

1199 PS C **1896** apparently commercial usage of QV (1d+)1d reply-half with message headed "Montevideo 23.2.96", to "SS *Tanis*/Punta Arena/Chile", 'SUCCURL MARITIMA/A 23FEBR96 1/MONTEVIDEO' cds & cancelled on arrival 'PUNTA ARENAS/27/FEB/96/CHILE', a bit stained but quite presentable. A remarkable UPU-permitted usage. [It appears that the intact card was sent to Uruguay by the engineer on SS "*Tanis*", who advised he was *en route* to Punta Arenas]

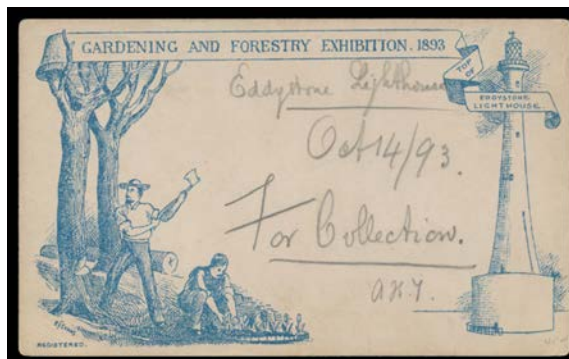
150

**GERMANY****Ex Lot 1220**

1220 C **PICTURE POSTCARDS:** Box of chromolithos mostly "Gruss aus" multi-view cards including some very unusual types plus for 1897 Saxony Exhibition x2, the Kaiser & Infantry, "Gruss vom Kaiser-Manöver" and a very enthusiastic group of Maypole Dancers etc, mostly 1890s usages - noted from 1890 & 1892 - with some postmark/postal history interest, fifteen are unused including "Gruss aus Herbertshöh" (New Guinea) & "Neptunsfeier Aequator-Taufe" (Equator-Crossing Party), also a few early non-chromos including advertising cards for *Cafe Bauer* and *Caffée und Restaurant Kaiser Friedrich* both in Leipzig, some minor problems but generally fine to very fine. A beautiful lot. Ex Keith Harrison. (62)

750<sup>T</sup>**GREAT BRITAIN - Postal Stationery****Lot 1245**

1245 PS B **POSTAL CARDS:** 1870 Smaller Size ½d lilac with 'GOTH' woodcut illustration of a Bacchanale dated 'March 8 1871' in black on the reverse, minor blemishes, unused. Ex Keith Harrison. [In about 1868, Ernest Claude Lee & a small circle of friends founded a society called "Picts & Goths". Their promotional postcards are among the very earliest pictorial types from Great Britain. A related "PICTS" card sold at our auction of 14.12.2015 for \$529]

400<sup>T</sup>**Ex Lot 1246**

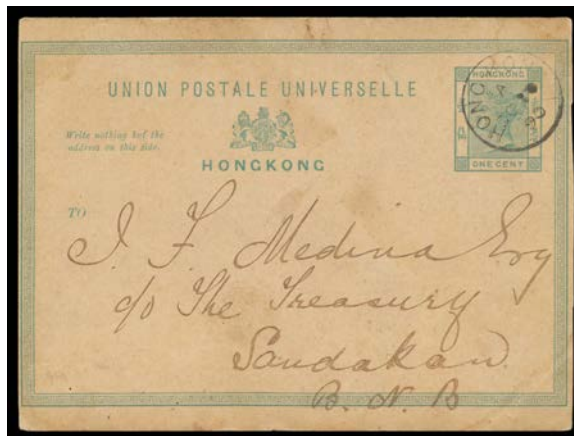
1246 PS A/B - 1878 1½d with (1891) 'ROYAL NAVAL EXHIBITION/TOP OF EDDYSTONE LIGHTHOUSE' & illustration of the Lighthouse in Blue on the reverse, two examples with Exhibition pictorial datestamp in violet (a light but clear strike) or blue (superb strike); another with 'GARDENING AND FORESTRY EXHIBITION 1893' & illustration of the Lighthouse in Blue on the reverse, very fine Exhibition pictorial datestamp of OCT14/1893 in violet (Cat £400) and very fine 'CHISWICK' arrival datestamp; minor blemishes. Ex Keith Harrison. (3)

400<sup>T</sup>



Lot Type Grading Description

Est \$A

**HONG KONG****Lot 1249**

**1249** PS C **1890** usage of 1c blue-green Postal Card to "Sandakan/BNB" with light but clear 'SANDAKAN/16/OCT/1890' arrival b/s in red, a bit aged/stained still quite presentable. A rare origin/destination item, especially this early.

750<sup>T</sup>**Lot 1250**

**1250** PS A- **1895** usage of 4c grey Postal Card with 'VIA BRINDISI & ENGLAND' at lower-left scored-through, to Austria with 2c rose added, 'TETSCHEN/AD ELBE' arrival cds on the face, minor hinge remainders at top & base.

250<sup>T</sup>**INDIA****Lot 1255**

**1255** PS (B) **1896** 'ONE ANNA' on 1/2a Postal Card from Bombay to "Mayotte/Madagascar" with 'SEA POST OFFICE' cds of FE29/00 (Leap Year), French marine sorter d/s & 'D'ZAOUZDI/MAYOTTE' arrival cds, minor peripheral repairs. [Geographically, Mayotte is part of the Comoros group. However, politically it is an external Department of France. d'Zaoudzi is on the second-largest island Petite-Terre]

400<sup>T</sup>

INDIA (continued)

Lot Type Grading Description Est \$A



Ex Lot 1257

1257 PS **POSTAL STATIONERY:** Commercially used QV issues with Postal Cards x22 including 1900 with illustrated advert for D Raju & Co Engineers (Madras), Official Postal Cards x4, Envelopes x22, Soldiers' & Seamen's Envelope, Registration Envelopes x2 & Wrapper, some better usages including 'TOO LATE' & taxed items and many very fine to superb postmarks including squared-circles, duplexes & TPOs, condition variable but generally fine. (52)

750<sup>T</sup>

INDIAN STATES - Convention States



Ex Lot 1258

1258 PS B **GWALIOR:** Overprint on QV Postal Cards 1/4a & 1/4a+1/4a (both parts used but unsevered & very scarce thus), various postmarks including 'GWALIOR STATE/BHILSA', 'GWALIOR STATE/LASHKAR', 'DLO/GWALIOR STATE/POSTAGE DUE/ONE ANNA' & 'DLO/GWALIOR STATE/FREE' d/s, a few faults but presentable. Scarce quartet. (4)

400<sup>T</sup>

INDIAN STATES - Feudatory States



Ex Lot 1259

1259 CPS **Commercially used Postal Stationery & a few covers, from Bundi, Cochin x9, Idar, Kishanggar, Morvi x2, Saurashtra x2 & Travancore x24 including a good group of Surcharges, some primitive Postal Cards, better usages & postmarks, condition variable but generally fine. (40)**

600<sup>T</sup>



**INDIAN STATES - Feudatory States (continued)**

Lot Type Grading Description

Est \$A

**Lot 1260**

**1260** PS B **BAHAWALPUR:** 1900 usage of Indian ¼a Postal Card with superb 'BAHAWALPUR' "bridge"-type cds & very fine 'BIKANER' arrival cds, light horizontal crease.

250<sup>T</sup>**MALAYAN REGION**

**1281** CPS **MALAY STATES: PERAK:** Commercial covers comprising 1899 - the panels separated - to Penang with 3c tied by 'TAPAH' squared-circle, 1901 to India - the panels separated but with the original contents - with 2c strip of 4 tied by 'TAPAH' squared-circle, 1937 local Chinese usage of 2c Sideface Postal Card, 1955 registered airmail to India with 5c 25c & \$2, 1951 oversize registered airmail Penang to GB with Kelantan \$1 x2 \$2 x3 & \$5 x2, and 1954 very fine internal usage of uprated 20c Registration Envelope size H2. (6)

400<sup>T</sup>**Ex Lot 1291**

**1291** PS **NORTH BORNEO:** 1891-1914 Postal Cards commercial usages comprising 1891 3c to Austria with 'KUDAT' cds & 'LABUAN' transit, 1893 '1/CENT' on 8c - repaired - to Hong Kong with superb bars cancel light 'SANDAKAN' cds & superb 'T' h/s, 1907 6c to Holland with light but clear 'SANDAKAN' cds, 1913 1c uprated to Switzerland with message headed "Bequati" (?) & faint 'KUDAT' cds, and 1914 6c to Holland with faint 'LAHAD DATU' cds. (5)

750<sup>T</sup>**NETHERLANDS INDIES****Ex Lot 1331**

**1331** CPS **Commercial mail** including 1892 15c Envelope to Switzerland with superb 'TANDJOENGPOERA' cds & curved 'NED:INDIE/OVER BRINDISI' h/s, 1897 uprated 25c Envelope to Australia with 'TEGAL' squared-circle, 1900 7½c Postal Card from 'MEDAN' to Nagasaki with message in Japanese, 1908 uprated 10c Envelope with 'LAMONGAN' straight-line cancels, 1932 registered to USA with 'GPO/BANDOENG/.../MO DEPT' cachet & 'WEEKLY/AIRMAIL SERVICE/...' label tied to back by Batavia cds, Japanese Occupation 'KARTOE POS' with 3½s Soldier, 1947 OAS "Luchtpost per Skymaster" to GB with Australian-pattern 'BATAVIA' cds, 1948 'VIJF CENT' on 3½c Postal Card to Holland, etc, generally fine to very fine. (12)

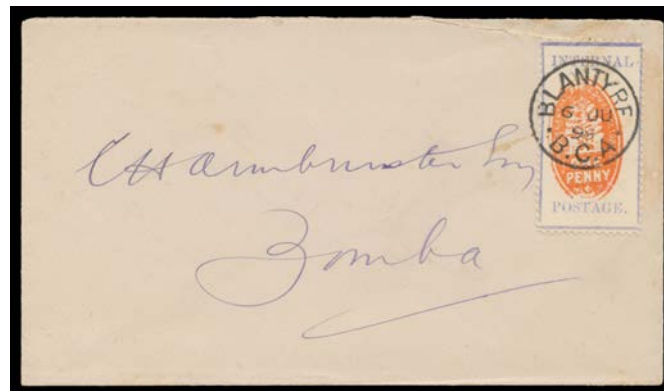
400<sup>T</sup>

Lot Type Grading Description

Est \$A

**NEW GUINEA - German (Deutsch) New Guinea****Ex Lot 1335**

**1335** CPS A/B **1895** commercial mail to Germany **1)** usage of German 5pf Postal Card ('492d' at lower-right) uprated with 5pf green tied by 'STEPHANSORT' cds; **2)** missionary's cover with German 10pf pair tied by 'STEPHANSORT/ \* ' cds; **3)** (to Sydney) with German 20pf tied by fine 'HERBERTSHOHE' cds, apparently missent via the Dutch Indies with 'WELTEVREDEN', 'BATAVIA' & 'NI AGENT SINGAPORE' transit b/s plus 'COLOMBO' transit & Sydney arrival b/s; **4)** usage of German 10pf Postal Card ('693a' at lower-right) "By English mail" with very fine 'MATUPI' cds, very fine; and **5)** *Neu-Guinea Compagnie* cover to Germany with German 20pf tied by largely very fine 'HERBERTSHOHE' cds, Sydney transit b/s; a few minor blemishes/defects. **(5)**

1,000<sup>T</sup>**NYASALAND****Ex Lot 1369**

**1369** \*OCPS Selection with 1895 No Wmk Arms to 3/- with 'SPECIMEN' Overprint plus 2/6d to £1 with 'SPECIMEN' Handstamp, 1897-1900 Redrawn Arms used 3/- & 4/-, 1898 'INTERNAL/POSTAGE' Imperf x3 & Perf 12 x3 (one on 1898 cover from 'BLANTYRE' with 'ZOMBA' b/s), 1950 Postage Dues mint (VLMtd), a few condition issues, also BCA Postal Cards x4 & Wrapper all with 'SPECIMEN' Overprint & very fine. **(38 + covers)**

800

Lot Type Grading Description

Est \$A

**PAPUA - Postal History****Lot 1393**

**1393** PS A **POSTAL CARDS:** 1907 philatelic usage of 1d red to Germany uprated with BNG ½d and 2d tied by 9-bar 'BNG' cancels of Samarai, 'REGISTERED/SAMARAI BNG' h/s. A rare albeit philatelic usage.

500

**SOUTH AFRICA - Provinces****Ex Lot 1418**

**1418** PS **CAPE OF GOOD HOPE:** Commercially used mostly QV Postal Stationery comprising QV Postal Cards x3 from 'BEDFORD', 'KLOOF STREET/GARDENS', or 'SNEEZEWOOD' (seriously!) to 'UMZIMKULU'; Letter Cards x2 one underpaid to Germany with 'MAFEKING/OC13/00/CGH' squared-circle & 'T/15c' (message a little bit too affectionate!); Envelopes x7 including with Boer War PBC of Grahamstown & Nelspoort, 1894 with '876' cancels & 'NGOZLENI' cds, 1898 with superb 'PO UPINGTON' cds & 1900 underpaid to NSW with very fine 'WESTERN/TPO 5' cds & NSW 1d Postage Due; Registration Envelopes x4 including 1885 with 'PRINCE/ALBERT' & 'PRINCE ALBERT' cds & 1905 with 'KLEIN DRAKENSTEIN' cds; and Wrappers x3 including 1901 to Jamaica uprated with Transvaal VRI 1d x4 on the reverse; condition variable. A good lot. (19)

750<sup>T</sup>