

Lot Type Grading Description Est \$A

MISCELLANEOUS LOTS

521	**/*V		Complete sheets in a sheet folder containing NWPI ½d forme of 30, New Guinea Hut Airs ½d, Hut 'OS' 1d & 3d, Undated Birds 2/- two blocks of 15, 1937 Coronation x30 sets; and Papua 1d on ½d, Bicolours ½d x3 sheets, 1d, 1½d x2 (one CTO), 2d x2 & 2½d, and 3d 'AIR MAIL' block of 20, condition rather mixed but mostly unmounted.	500
-----	-------	--	---	-----

COMMONWEALTH OF AUSTRALIA - Kangaroos - First Watermark

560	**		1z ½d green BW #1 complete sheet of 120 from Plate 1 with <i>No Monogram</i> positions on the left & right panes BW #(1)z & za and varieties at <i>Retouch to Shading over first 'N' of 'PENNY'</i> [L58], <i>Clubbed Foot on Second 'N' of 'PENNY'</i> [R13], <i>Coral Reef off NSW Coast</i> [R40] & <i>Surfboard off South Coast of WA</i> [R55] #1(1)d e f & g, mounted in the margins only with all units being unmounted, Cat \$5000++ (for mounted varieties & No Monogram strips of 3 + 110 unmounted singles). A remarkable survivor, even for the lowest denomination in the Kangaroo series.	2,500
-----	----	--	--	-------

COMMONWEALTH OF AUSTRALIA - Kangaroos - Cofa Watermark

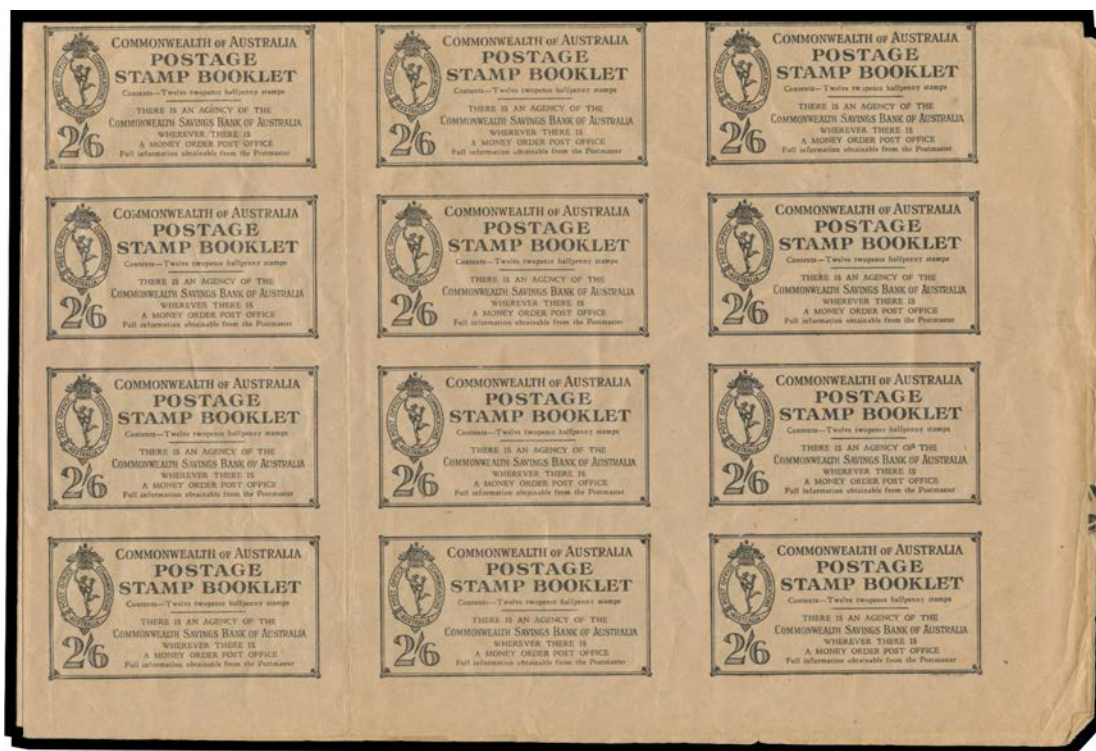
583	**	A	41 2/- maroon Redrawn Die complete sheet of 120 (12x10) with <i>Gutter 14mm Wide</i> , Authority Imprints and varieties <i>White Scratch from Left Frame to Map</i> and <i>White Scratch through Kangaroo BW #41f & g</i> but before appearance of <i>White Flaw on Kangaroo #41e</i> , unmounted, Cat \$2600+.	500
-----	----	---	--	-----

COMMONWEALTH OF AUSTRALIA - KGV Heads - Small Multiple Watermark Perf 13½x12½

644	**	B	of PUNCTURED 'OS' : 2d scarlet <i>Die II BW #100ba</i> Plate 2 complete sheet of 120 with listed varieties #100(2)d to m, some minor perf separation & a little aged, unmounted, Cat \$14,000+.	1,500
-----	----	---	--	-------

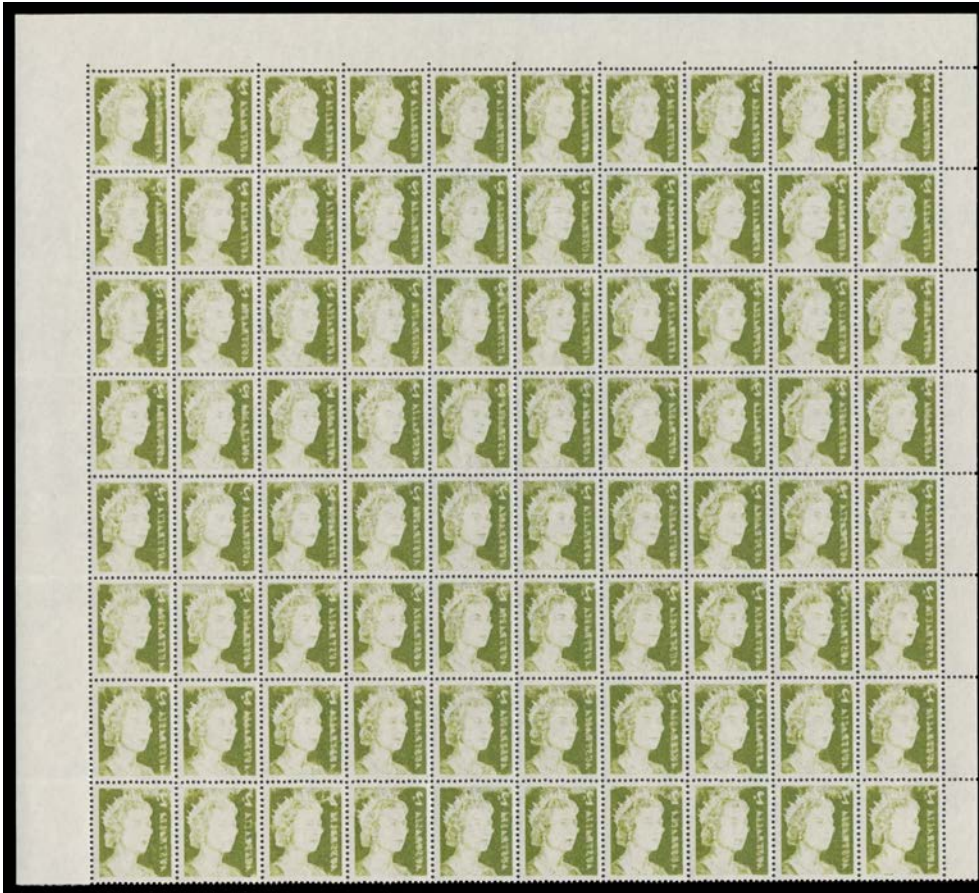
COMMONWEALTH OF AUSTRALIA - Other Pre-Decimals

648	**	A	Complete sheets comprising KGV1 2½d brown, 3½d Antarctic (2), 3½d Rotary, Cobb 3½d, YMCA, NSW Govt (2), Nursing, Broken Hill (2), SA Government (2), 1957 Christmas 3½d & 4d (2), 1958 Christmas 3½d, NT (2), Stuart (2), Melbourne Cup, Queensland Government & Canberra (3), also part-sheets & blocks comprising 3d (112), 3½d (1130), 4d (340), 5d (1730), 7½d (40), 8d (140), also 6d Anteater (160) & 8d Tiger Cat (80) in panes, unmounted.	300
-----	----	---	---	-----



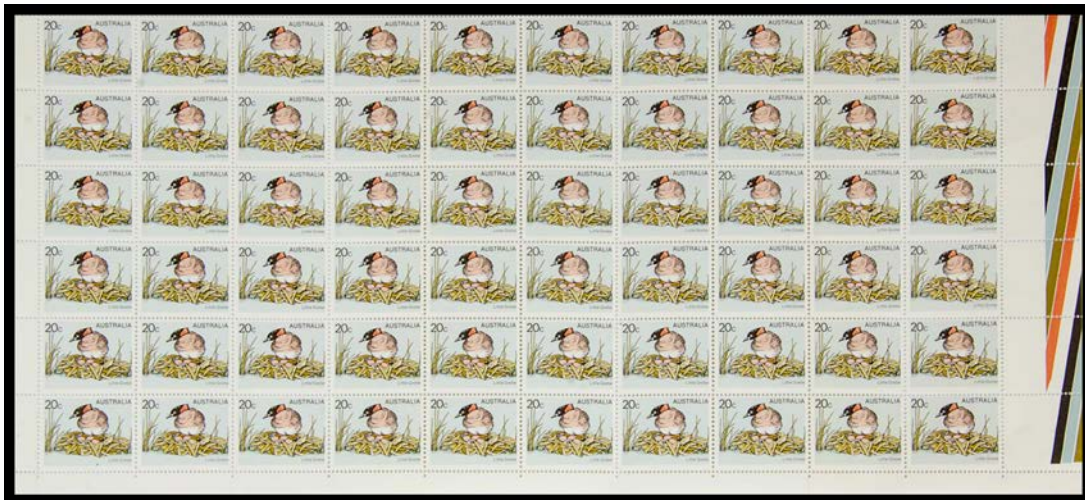
Lot 670

670	B	B	BOOKLETS: 1949 KGV1 2/6d (2½d scarlet), full uncut sheet of 48 front booklet covers (printed both sides) BW #B55(PP), folded in quarters with some minor peripheral faults that hardly detract from this wonderful artefact, Cat \$6000++. The only such sheet we have seen. [The ACSC states "Several uncut sheets...came onto the market, and blocks of various sizes exist"]	500
-----	---	---	---	-----

COMMONWEALTH OF AUSTRALIA - Decimal Issues**Lot 682**

682 ** A **1966-71 Definitives QEII 2c olive-green with Complete Strong Offset BW #437c** large-part sheet of 80 (10x8), unmounted, Cat \$8000+. Spectacular & by far the largest recorded piece of this error.

3,500

**Lot 687**

687 ** A **1978-84 Birds 20c Little Grebe with Yellow Printing (Eye & Beak) Completely Omitted BW #805cb (SG 673a)** block of 60 (10x6) from the base of the sheet with the colour bars in the right selvedge also showing the yellow completely omitted, unmounted, Cat \$15,000 (£11,400++). [The ACSC states that one sheet of 100 was discovered. Obviously, this is the largest surviving multiple]

3,000

Lot	Type	Grading	Description	Est \$A
-----	------	---------	-------------	---------

COMMONWEALTH OF AUSTRALIA - Postage Dues

702	**/*	A/A+	1922-30 Third Watermark 1d carmine & yellow-green BW #D106 complete right-hand pane of 60 (6x10) divided into two blocks of 30, plus lower-half of the left-hand pane, with listed varieties, most units are unmounted, Cat \$1800+-. (3 blocks)	450 ^T
704	**/**	A	- 1½d carmine & bright yellow-green <i>AJ Mullett</i> printing (some minor perf separation, most units unmounted) & 1½d carmine & yellow-green <i>John Ash</i> printing (unmounted) BW #D107B & C complete sheets of 120 with full imprints, Cat \$3000+-. [With plating notes] (2 sheets)	500 ^T

NEW SOUTH WALES

902	Ω	A	FORGERIES: Laureates unauthorised reprints 8d in blue complete sheet of 50 (10x5) with <i>HC Jervis</i> imprint at the base, central vertical fold between the columns.	250
-----	---	---	--	-----

TASMANIA

1050	**/*	A	1891 Surcharge 'd./2½' 3½mm Setting on 9d pale blue SG 169 complete sheet of 120 (12x10) with <i>Plate Number '7'</i> & <i>Control Number '50'</i> both appearing twice, most units are unmounted, Cat £600+-.	200
------	------	---	---	-----

ANTARCTICA

1147	**	A	AUSTRALIAN: 1966-68 Pictorials 1c to \$1 complete in sheets of 48, unmounted. (11 sheets)	1,000
------	----	---	---	-------

ETHIOPIA

Stepan Balian, an Armenian, migrated to Ethiopia in 1911 where he became a successful merchant in Harrar and later Dire-Daoua. He was fascinated with the stamps of his adopted homeland, especially the plethora of handstamped overprints & surcharges of the 1920s & 1930s that even today offer collecting & research opportunities at a price point rarely available for more "popular" countries. We are confident that all the material from this source is genuine.

1191	**		1894 Menelik II ¼g green Scott #1 accumulation including numerous blocks plus a quantity of complete panes of 25 (5x5) and sheets of 50 (10x5, with <i>Millesimes '4'</i>), unmounted (brown) o.g., Cat \$US000's. [The condition is very mixed with lots of curling and some sheets adhering to one another. However, this may represent a wonderful research opportunity, or a remarkable marketing or promotional opportunity] (Qty)	Offer
1192	**		1921-27 Surcharges on Pictorials accumulation of large blocks, part-sheets & some complete sheets between Scott #136 & 153 with innumerable "errors" noted on the interleaving, includes impressive quantities of many values including 1g on 3t #146 sheet of 100, ½g on 8g #148 sheet of 100 & 1g on 12g #153 block of 40 & half-sheet of 50, etc, the vast majority are very fine unmounted mint. An exceptional research or wholesale opportunity. (many 100s)	400

PAPUA

1378	**	A B1	1916-31 Bicolours complete sheets of 40 comprising <i>Harrison Printings</i> ½d SG 93a, 1d SG 94c, 2d SG 96 x2, 2½d SG 97, and <i>Ash Printings</i> 2d SG 96, also 'ONE PENNY' on ½d yellow-green SG 106w, unmounted. <i>Ex Dr Donald DeLong</i> . [Notes of varieties included] (7 sheets)	1,000
------	----	------	---	-------