

Lot Type Grading Description

Est \$A

**MISCELLANEOUS LOTS****Ex Lot 514**

514	*		'SPECIMEN' Overprints on an array of early 1920s issues from British West Indies, British Africa, Malayan Region, Pacific Islands & the Mediterranean, mostly short/broken sets but with a few complete but minor sets including Jamaica Child Welfare & Gold Coast Postage Due sets, lots of high values to 15/-, £1 & 20r, also some non-Specimens including Gilbert & Ellice Overprints on Fiji set (used), Straits Malaya-Borneo Exhibition to \$2 & Southern Rhodesia Admirals, condition variable but generally fine to very fine. <b>(330 approx)</b>	1,000
516	**OC		<b>A real mixed bag</b> with Colombia revenues to \$20 with small puncture & 'SPECIMEN' Overprint (15 + 6 blocks of 4); 'BECHUANALAND/PROTECTORATE' KEVII Revenues 2/6d with postal cds; a very scrappy group of pre-1901 South African covers including internal & registered items from Transvaal; 1936 much-travelled cover from USA to Egypt & beyond; & a few others.	150

**COMMONWEALTH OF AUSTRALIA - General & Miscellaneous Lots**

556	**V	A	<b>TERRITORIES:</b> c. early 1963 Post Office pack with current stamps of Nauru, Norfolk Island (including 10/- Bird 'SPECIMEN') & PNG (including 10/- Rabaul & £1 QEII 'SPECIMEN') but no AAT, values to 50c are CTO.	100
-----	-----	---	--	-----

**COMMONWEALTH OF AUSTRALIA - Kangaroos - First Watermark****Lot 566**

566	*	A-/B	<b>47x 10/-</b> (a trifle aged), £1 & £2 (both with some gum disturbance) each with 'Specimen' Handstamp, Cat \$2550.	750
-----	---	------	---	-----

**Lot 568**

568	*	B B1	<b>51A</b> £1 brown & blue, horizontal crease, Cat \$4000.	750
-----	---	------	--	-----

**COMMONWEALTH OF AUSTRALIA - Postal Stationery**

775	PS	A	<b>AEROGRAMMES - OFFICIAL:</b> 1959 Third Issue with 'OHMS/[Jet]' at Upper-Right overprinted 'SPECIMEN' in red, Cat \$100.	60
-----	----	---	--	----

**NEW SOUTH WALES****Lot 868**

868	P	A	<b>1867-93 De La Rue New Values</b> 4d & 10d imperforate plate proof singles in the issued colours on un gummed unwatermarked or '10' watermarked paper both with small <i>sans-serif</i> 'SPECIMEN' (Marcus Samuel Type D2), margins close to good. Rare. [Absent from Bill McCredie's collection]	250
-----	---	---	---	-----

**NEW SOUTH WALES - Postal Stationery****Ex Lot 928**

**928** PS A/B **POSTAL CARDS:** 1897 1d Die I group with "Greetings from", "With Christmas Greetings" x6 (one with Large 'SPECIMEN' Overprint on reverse) & "With New Year Greetings" x5 (one with Large 'SPECIMEN' Overprint on reverse), some minor blemishes - mostly on the address sides - but generally fine to very fine unused. (12)

500

**Lot 930**

**930** E A **ENVELOPES:** Embossed 'POSTAGE ONE PENNY/[QV]/NEW SOUTH WALES' in dull rose on an envelope with unusual italicised '*Specimen.*' handstamp below the impression. Rare & most desirable essay. [Superior to *John Bell's* example that sold at our auction of 8/5/2013 for \$1495. The 1d was never used for Envelopes. In 1865 it was adopted for the first issue of Wrappers]

1,000

**QUEENSLAND****Ex Lot 933**

**933** Ω\* A/B Selection of Small Chalons from various issues with values to 1/- grey x5 & 1/- violet x2 plus 2/- x2, 2/6d, 5/- x4 & 10/- including 2d scarce block of 4, all with various types of 'SPECIMEN' handstamp, minor duplication, many with part- to large-part o.g. & generally fine to very fine. (28)

500<sup>T</sup>



**QUEENSLAND (continued)**

Lot Type Grading Description

Est \$A

**Lot 942****942** P

A

**1882-95 Large Chalons 2/6d** imperforate plate proof complete sheet of 30 (5x6, the last unit excised with attendant minor scissor-cuts between the units above & to left) in brown on thin card, complete but close outer margins, each unit with 'SPECIMEN' handstamp in rosine, partly-affixed to a slightly larger piece of card. A wonderful showpiece of great rarity.

10,000



QUEENSLAND (continued)

Lot Type Grading Description

Est \$A



Lot 943

943

P

A/A-

- £1 imperforate plate proof complete sheet of 30 (5x6, the last unit excised with attendant minor scissor-cuts between the units above & to left) in bright orange-vermilion on thin card, complete but close outer margins, 'SPECIMEN' handstamp in rosine with *Double Handstamp* on the third unit and 'SPECIMEN' Omitted from the Last Line, the first units in the first & last lines each with a pinhole, affixed to a larger piece of card. Another wonderful showpiece of great rarity.

10,000

Lot Type Grading Description

Est \$A

**TASMANIA****Ex Lot 997**

<b>997</b>	*	A/B	Various 'SPECIMEN' or 'Specimen' Overprints comprising Sidefaces ½d 3d & V/Crown 9d, Tablets 5d & 5/- and 1903 V/Crown 1/-, Pictorials 1899-1900 set of 8 and 1902 V/Crown set of 3, a few minor blemishes but generally very fine with large-part o.g. <i>Ex VJ Colbeck. (17)</i>	400
------------	---	-----	--	-----

**Ex Lot 1052**

<b>1052</b>	*/**	A/A+	<b>1892-99 Tablets</b> ½d to £1 SG 216-225 complete with 'SPECIMEN' Overprint, the ½d & 6d mounted, the others are superb unmounted, Cat £650. <i>Ex VJ Colbeck. (10)</i>	400
-------------	------	------	---	-----

**VICTORIA****Lot 1089**

<b>1089</b>	*	A-	<b>1884-96 Large Stamp Duty</b> £1/10/- deep grey-olive SG 244 with <i>Kellow &amp; Turner</i> Type 13 'Specimen' Handstamp (applied diagonally reading upwards), sweated gum. [Only one example recorded in the Handbook]	250 <sup>T</sup>
-------------	---	----	--	------------------

**ASCENSION****Ex Lot 1154**

<b>1154</b>	*	A/A-	<b>1922 Overprints on St Helena</b> ½d to 3/- SG 1-9 with 'SPECIMEN' Overprint, a few tiny defects, Cat £800. (9)	300
-------------	---	------	---	-----

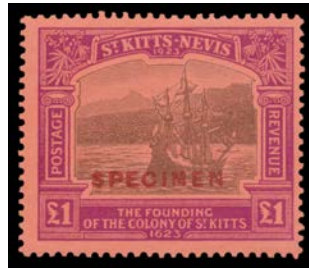
**Ex Lot 1155**

**ASCENSION (continued)**

Lot	Type	Grading	Description	Est \$A
<b>1155</b>	*	A B1	<b>1924 Badge of St Helena</b> ½d to 3/- with 'SPECIMEN' Overprint, Cat £1000 (including the 5d, issued 1927). (11)	500

**BRITISH WEST INDIES**

1165	*	A/B	<b>BARBUDA:</b> ½d to 5/- SG 1-11 complete with 'SPECIMEN' Overprint, mostly minor hinge remainders, Cat £225. (11)	100
------	---	-----	---	-----

**Ex Lot 1168**

<b>1168</b>	*	A B1	<b>ST KITTS:</b> 1923 Tercentenary ½d to £1 SG 48-60 complete with 'SPECIMEN' Overprint, Cat £800. (13)	600
-------------	---	------	---	-----

**CYPRUS****Lot 1189**

<b>1189</b>	*	A B1	<b>1923 MCA</b> 10/- & £1 SG 100-1 with 'SPECIMEN' Overprint, Cat £600.	450
-------------	---	------	---	-----

**Ex Lot 1190**

<b>1190</b>	*	A- B1	<b>1924 KGV Shields</b> ¼pi to £1 SG 102-117 with 'SPECIMEN' Overprint, minor hinge remainders but very fresh, Cat £1100 (including the 1925 Script Wmk issue). (16)	500
-------------	---	-------	--	-----

**GAMBIA****Ex Lot 1214**

<b>1214</b>	*	A/A- B1	<b>1923 MCA</b> ½d to 10/- SG 122-142 plus 1/- SG 134a all with 'SPECIMEN' Overprint, some minor hinge remainders but very fresh, Cat £550+. (20)	400
-------------	---	---------	---	-----



Lot	Type	Grading	Description	Est \$A
-----	------	---------	-------------	---------

**GILBERT & ELLICE ISLANDS**

1225	*	A B1	1924 £1 purple & black/red SG 24 with 'SPECIMEN' Overprint, lightly mounted.	200
------	---	------	--	-----

**HONG KONG****Ex Lot 1253**

1253	*	A B1	POSTAGE DUES: 1923 1c to 10c SG D1-5 complete with 'SPECIMEN' Overprint, Cat £425. (5)	300
------	---	------	--	-----

**KENYA UGANDA & TANGANYIKA****Ex Lot 1267**

1267	*	A-/B	KENYA & UGANDA: 1922-27 KGV 1c to £1 SG 76-95 all with 'SPECIMEN' Overprint, the 10/- with small corner faults, some minor hinge remainders but very fresh, Cat £850 including five later values. (15)	400
------	---	------	--	-----

**Lot 1268**

1268	*	A- A1	- 1922-27 KGV £5 black & blue SG 99 with 'SPECIMEN' Overprint, exceptional centring, minor hinge remainder but very fresh, Cat £500.	400
------	---	-------	--	-----

**Lot 1269**

1269	*	(A-)	- 1922-27 KGV £10 black & green SG 100 with 'SPECIMEN' Overprint, very well centred, small corner repair at lower-right, Cat £750.	250
------	---	------	--	-----

**Lot 1270**

1270	*	A- C1	- 1922-27 KGV £25 black & red SG 102 with 'SPECIMEN' Overprint, minor hinge remainders but very fresh, Cat £1400.	850
------	---	-------	---	-----

**KENYA UGANDA & TANGANYIKA (continued)**

Lot Type Grading Description

Est \$A

**Lot 1271**

**1271** \* A- B1 - 1922-27 KGV £50 black & brown SG 103 with 'SPECIMEN' Overprint, minor hinge remainders but very fresh, Cat £1700.

1,000

**Ex Lot 1272**

**1272** \*Ω A/A- **TANGANYIKA:** 1922-24 Giraffes 5c to £1 SG 74-88 complete with 'SPECIMEN' Overprint, some minor hinge remainders & the 10/- without gum but very fresh, Cat £800. (15)

400

**MALAYAN REGION**

1280 PS A **MALAY STATES:** 1937 5c Chef's Hat Envelope with 'SPECIMEN' Overprint.

200<sup>T</sup>**Ex Lot 1289**

**1289** \* A-/B **NORTH BORNEO:** 1922 Malaya-Borneo Exhibition 1c to 50c SG 253-275 complete with 'SPECIMEN' Overprint, a small small defects & minor hinge remainders, Cat £475. (14)

300

**MALTA****Ex Lot 1307**

**1307** \* A- **1922-26 Definitives** ¼d to £1 SG 123-39 - missing only the two 1926 low values - with 'SPECIMEN' Overprint, mostly minor hinge remainders, Cat £550 for the set of 17. (15)

300



Lot Type Grading Description

Est \$A

**MAURITIUS**

Lot 1308

1308 \* A B1 1921-26 Arms 50r dull purple &amp; green SG 222 with 'SPECIMEN' Overprint, Cat £400.

300

**NEW HEBRIDES**

Ex Lot 1347

1347 \* A B1 1925 Dual Currency Arms ½d (5c) to 5/- (4fr25c) SG 43-51 plus the Postage Due set SG D1-5 all with 'SPECIMEN' Overprint, Cat £400. (14)

300



Ex Lot 1349

1349 \* A B1 FRENCH: 1925 Dual Currency Arms 5c (½d) to 5fr (4/-) SG 42-52 plus the Postage Due set SG FD53-57 all with 'SPECIMEN' Overprint, Cat £500. (16)

350

**NYASALAND**

Ex Lot 1369

1369 \*OCPS Selection with 1895 No Wmk Arms to 3/- with 'SPECIMEN' Overprint plus 2/6d to £1 with 'SPECIMEN' Handstamp, 1897-1900 Redrawn Arms used 3/- &amp; 4/-, 1898 'INTERNAL/POSTAGE' Imperf x3 &amp; Perf 12 x3 (one on 1898 cover from 'BLANTYRE' with 'ZOMBA' b/s), 1950 Postage Dues mint (VLMtd), a few condition issues, also BCA Postal Cards x4 &amp; Wrapper all with 'SPECIMEN' Overprint &amp; very fine. (38 + covers)

800

**NYASALAND (continued)**

Lot Type Grading Description

Est \$A

**Ex Lot 1370**

**1370** \*\* A-/A+ **1896 Arms with Watermark** 1d to £1 SG 32-40 plus the rare £10 & £25 (a few short perfs) SG 41 & 42 all with 'SPECIMEN' Overprint, full unmounted o.g. (!), Cat £1150 (mounted). Remarkably fresh & rarely available as a complete set, in any condition. **(11)**

1,000

**Ex Lot 1371**

**1371** \* A/A- **1897-1900 Redrawn Arms** 1d to £10 SG 43-52 plus 1901 New Colours 1d 4d & 6d SG 57d-58 all with 'SPECIMEN' Overprint, a few trivial blemishes, large-part o.g. & most are lightly mounted, Cat £815. **(14)**

500

**Ex Lot 1372**

**1372** \* A/B **1903-04 KEVII** 1d to £10 SG 59-67 all with 'SPECIMEN' Overprint, the £10 with slightly aged gum otherwise fine to very fine, most are lightly mounted, Cat £925. **(10)**

500

**PAPUA NEW GUINEA**

1398 \*/\*\*OC Collection largely complete mint &/or used with plenty of extras including all 'SPECIMEN' Overprints, Emergency Surcharges are used plus a few values on commercial covers, Tourism '65t' Omitted in CTO block of 12, Postal Charges mint pairs plus SG D1 forgery, a few Australia Used in TPNG covers & 1952 Pictorials 7½d on Mission cover to USA (a scarce item), etc, generally very fine. **(100s)**

1,000<sup>T</sup>**RHODESIA****Ex Lot 1407**

**1407** \* A B1 **NORTHERN RHODESIA:** 1925 KGV ½d to 20/- SG 1-17 complete with 'SPECIMEN' Overprint, lightly mounted, Cat £1200 including the 3/-, issued in 1929. **(16)**

850

Lot Type Grading Description

Est \$A

**SIERRA LEONE****Ex Lot 1415**

**1415** \* A- B1 **1921-27 Script Definitives** £2 blue & dull purple and £5 orange & green SG 147-8 both with 'SPECIMEN' Overprint, minor hinge remainders but very fresh, Cat £650. (2)

400

**SOUTH WEST AFRICA****Ex Lot 1421**

**1421** \* A/B **1923 Overprints on South Africa** 14mm Setting ½d to £1 complete set of English singles SG 1-12 with 'SPECIMEN' Overprint, the 1/3d with concealed tear & the 5/- with minor bend, a few hinge remainders, Cat £1700 as singles. (12)

600