

Lot Type Grading Description

Est \$A

**1913-14 ENGRAVED ISSUES**

Lot 12

**12** F A B1 **SIX PENCE KOOKABURRA:** 6d horizontal pair with very fine oval 'RABAU/APR 27 1915/NEW BRITAIN' datestamp in violet.

150



Lot 13

**13** \*\* A - 6d vertical pair with *Double Perforations* BW #60b between the units with an *Official Repair*, unmounted, Cat \$600+.

250



Lot 14

**14** \*/\*\* A - 6d vertical pair from the lower-left of the sheet with *Double Perforations* BW #60b at the base, the lower unit is unmounted, Cat \$600+.

250

## 1913-14 ENGRAVED ISSUES (continued)

Lot Type Grading Description

Est \$A



Lot 15

15 \*\* A - 6d corner block of 4 from the lower-right of the sheet with *Double Perforations* BW #60b at right, the lower units are unmounted, Cat \$1000+.

500



Lot 16

16 C B - 6d + KGV 1½d brown very late usage on 1924 cover to New York with Sydney cds & red/white registration label, oval *US Customs* cachet in purple, Cat \$2500 on cover.

500

Lot Type Grading Description

Est \$A

**1928 INTERNATIONAL PHILATELIC EXHIBITION**



**Lot 295**

**295** \*/\*\*OC Selection on exhibit pages etc including a single (from a M/S) affixed to official menu for 26.10.1928 (3 days before being issued), mint range including corner blocks of 10 & 12 and a complete sheet of 120, block of 4 tied to piece by 'NORFOLK ISLAND' cds, perf 'OS' group including a fine used block of 6 & two pairs with 'OS'/'OS' Omitted (probably fakes), three singles tied to covers - one a *Fred Hagen* front only - by the Exhibition cds in red, and scarce usage on *Avis de Réception* card, condition variable; also 1949 *Hélio-Vaugirard* facsimile.

750



**Ex Lot 296**

**296** \*/\*\*C "MINIATURE SHEETS": Mint sheetlets x5 - one from *Plate 1* with *Plate Scratch in the Right-Hand Margin* - and a full sheetlet on a spotty First Day Cover with two strikes of the Exhibition cds of 29OC28 in red, condition variable. (6 items)

400

297 \*\* C - Complete sheet of 15 sheetlets (5x3), some minor perf separation, generally very well centred, overall evenly aged gum but unmounted, Cat \$4125.

500

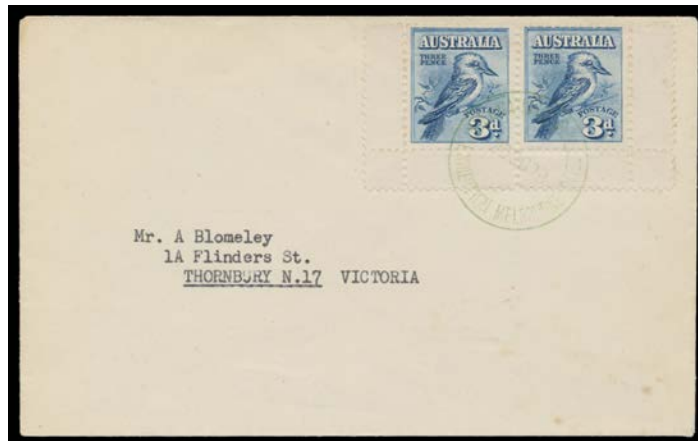
**1928 INTERNATIONAL PHILATELIC EXHIBITION (continued)**

Lot Type Grading Description

Est \$A

**Ex Lot 298**

**298** V A/B - Three sheetlets with the Exhibition cds in red of 29OC28 (four strikes; First Day of Issue), 31OC28 (thinned in the margin at the base) or 1NO28 (aged/suntanned gum but unmounted; Closing Day of the Exhibition), Cat \$900. (3) 400

**Lot 299**

**299** C A - Lower-half of a sheetlet tied to cover with Exhibition imprint on the flap by a characteristically light but clear strike of the Exhibition cds of 29OC28 in green (First Day of Issue) BW #133MSwa. The only example we have seen of the very scarce green cds on cover. 500

**1928 INTERNATIONAL PHILATELIC EXHIBITION (continued)**

Lot Type Grading Description

Est \$A



Lot 300

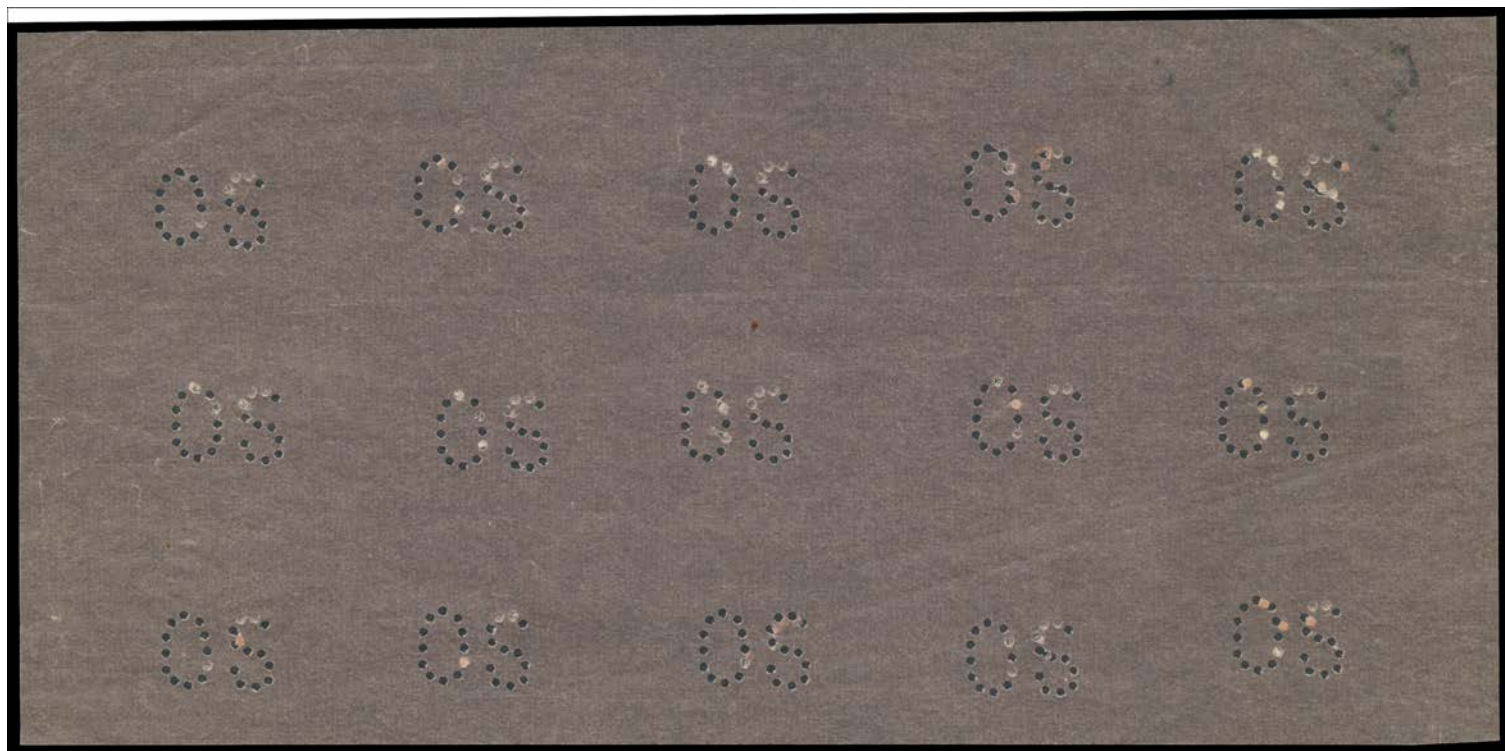
**300** \* A - Sheetlet in an unusually bright shade of blue with very white gum, apparently produced by photolithography. A very creditable forgery. [This item originated with a Canadian dealer who sent it to *Gary Watson* for auction in the 1980s. On arrival, it was identified as a forgery. Despite being the subject of an article in the local philatelic press, no other examples are known to have been recorded]

250

**1929 WESTERN AUSTRALIA CENTENARY**

305 \*\*/OC Exhibit pages etc with official publicity photo, two First Day Covers, two sets of *Plate Number* blocks of 4, *Re-Entries* in imprint blocks & a used single, etc, condition variable.

600



Lot 306

**306** \*\*/P **PUNCTURED 'OS'**: Exhibit pages with *Plate Number '2'* single & block of 20 (very occluded perfins; may be forgeries?), *Plate Number '4'* block of 4, imprint block of 8 (4x2), many units are unmounted; also piece of "blanket" with 15 'OS' punctures (5x3), and 4.11.1929 letter to a *MHR* forwarding an 'OS' sheet (not included).

600

**1929 WESTERN AUSTRALIA CENTENARY (continued)**

Lot Type Grading Description

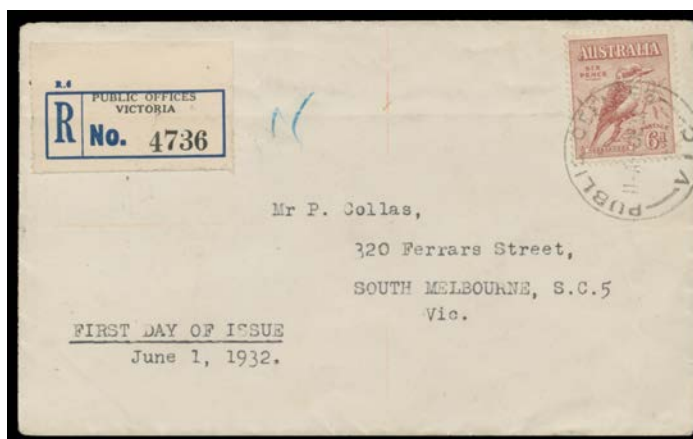
Est \$A

**Lot 307**

<b>307</b>	C	A-	- 1930 airmail cover with Swan 1½d, Air 3d, Sturt 1½d (rounded corner) & KGV 2d red all punctured 'OS' tied by 31mm 'PARLIAMENT HOUSE CANBERRA/FCT' cds, blue & black/white registration label. [The rate was 2d + 3d airmail + 3d registration = 8d. Both the Swan & the 3d Airmail are Cat \$750 on cover]	500
------------	---	----	--	-----

**1932 ONE SHILLING LARGE LYREBIRD**

321	**V	A B1	Unmounted block of 4, unmounted punctured 'G/NSW' single & overprinted 'OS' CTO block of 4 with large-part o.g., Cat \$700+. (3 items)	250
-----	-----	------	--	-----

**1932 6d LARGE KOOKABURRA****Ex Lot 336**

<b>336</b>	**		- Pair, two marginal blocks of 4, unmounted corner block of 6 with <i>Break in Top Frame</i> above 'AL', imprint blocks of 4 from Plate 1 x2 & Plate 2, registered First Day Cover & small parcel tag to Hobart with 6d + KGV 1d green, condition variable. (9 items)	350
------------	----	--	---	-----