

Lot Type Grading Description

Est \$A

**1932 SYDNEY HARBOUR BRIDGE**



**Lot 322**

**322** \*/\*\*O Selection on exhibit pages & *Hagners* including 2d two blocks of 4 with incomplete plate dots, 3d Plate Number '1' to '4' blocks of 4, 5/- CTO x2 (one with fake "postal" cancel added), 'OS' Overprints imprint blocks of 4 & CTO blocks of 4, etc, condition variable; also a colour photograph of the unique composite die proofs.

500



**Lot 323**

**323** E A+ **ORIGINAL ARTWORK:** Official photographic reduction to 200% stamp-size of *Frank Manley's* original artwork for the issued 2d design, oval 'Commonwealth Bank of Australia/STAMP/PRINTING BRANCH/Fitzroy Vict' [*sic*] cachet in violet on the reverse. Superb! Unlisted in the ACSC.

250



**Ex Lot 324**

**324** \* A **PLATE DOTS:** Recess 2d red two marginal blocks of 4 from the left of the sheets, the first with *One Plate Dot* BW #146z (Cat \$400), the other with the horizontal line but the *Plate Dot Omitted* (unlisted), both very lightly mounted. (2 blocks)

500

## 1932 SYDNEY HARBOUR BRIDGE (continued)

Lot Type Grading Description

Est \$A



Lot 325

**325** \* A/A- **POSTAL FORGERY:** 2d red BW #149c horizontal pair from the lower-left corner of the sheet, both units defaced with manuscript "X", a few split/rejoined perfs between the units, large-part o.g., Cat \$4000+. [Arthur's marginal strip of 3 sold for \$4998]

2,500



Lot 326

**326** \* A C1 **FIVE SHILLINGS:** Lower-left corner example, very lightly mounted, Cat \$550.

300



Lot 327

**327** \*\* A B1 - Upper-left corner example with *Plate Dot*, a little aged but unmounted, Cat \$3000 (mounted). [Arthur's very fine unmounted example sold for \$1785]

1,000



Lot 328

**328** \* A/A- - *John Ash Imprint* strip of 3, well centred, the first & third units with hinge remainders, the central unit is unmounted, Cat \$3000+ (mounted).

1,750

**1932 SYDNEY HARBOUR BRIDGE (continued)**

Lot Type Grading Description

Est \$A

**Ex Lot 329**

**329** CD A/A- **COVERS:** Opening Day cover with the commemorative slogan cancel & 'SYDNEY HARBOUR BRIDGE/ 1 ' cds; parcel label with 3d Plate Number '4' pair + Large Kookaburra 6d x3; Local OHMS cover with 2d overprinted 'OS'; and window-envelope for the illustrated telegram. **(4 items)**

250

**Ex Lot 330**

**330** C A/A- - 2d 3d & 5/- (with full imprint) tied to separate covers by the commemorative slogan cancel, a couple of minor blemishes. **(3 covers)**

500

**Lot 331**

**331** C A- - 2d & 3d tied to plain cover by Adelaide cds of 14MR32 being the First Day of issue, 5/- later added across the cds which was nefariously "reinstated", minor blemishes.

400

1932 SYDNEY HARBOUR BRIDGE (continued)

Lot Type Grading Description

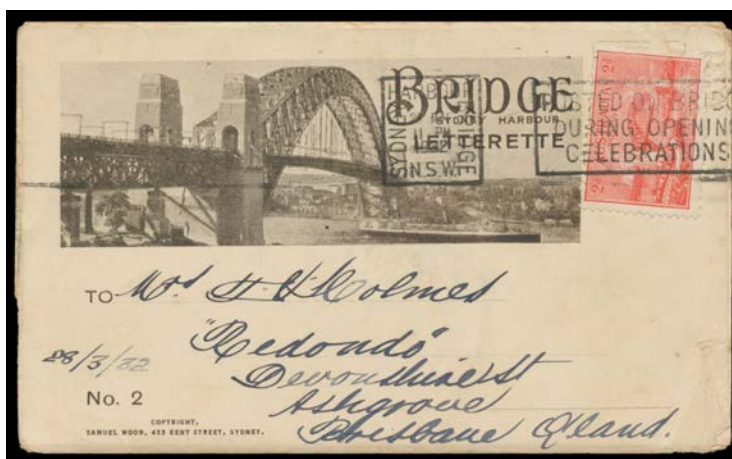
Est \$A



Lot 332

332 CL A - 2d & 3d both overprinted 'OS' tied to CSIRO cover by air to "Cloncurry NT" - Cloncurry is actually in Queensland - by 'CANBERRA/28OCT/1932/FCT AUST' machine cancellation, Brisbane & Cloncurry transit datestamps, forwarded to "Burnside Station/Brocks Ck/NT", Cat \$800 for just the 3d on cover. The rate was 2d letter rate per ounce + 3d airmail supplement per half-ounce. [Arthur's similar cover - both stamps damaged before being affixed - sold for \$1130]

750



Lot 333

333 C A- - Samuel Wood (Sydney) illustrated 'BRIDGE/SYDNEY HARBOUR/LETTERETTE' with five fold-out postcard-size photos of the bridge, Typo 2d tied by Opening Celebrations slogan cancel of 28MAR/1932.

150



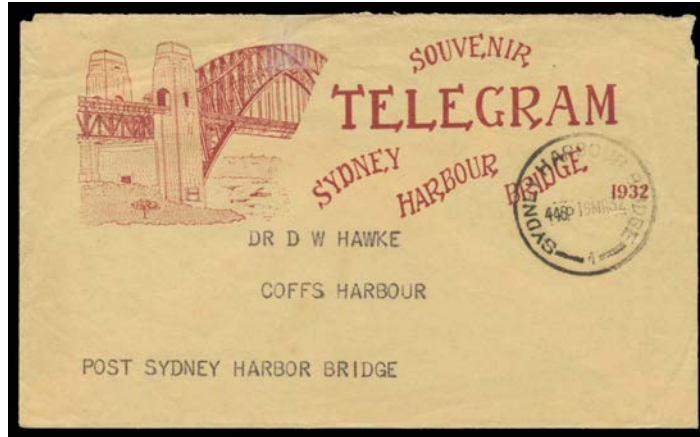
Ex Lot 334

334 C A ILLUSTRATED TELEGRAMS: Telegram with South-East Pylon cds of 21MR32, the matching envelope with Opening Celebrations slogan cancellation. (2 items)

500

**1932 SYDNEY HARBOUR BRIDGE (continued)**

Lot Type Grading Description Est \$A



**Ex Lot 335**

<b>335</b>	C	A/(A-)	- Telegram with South-East Pylon cds of 19MR32 (the Opening Day), the matching envelope - minor repaired tear at the top - with 'SYDNEY HARBOUR BRIDGE/ 1 ' cds. (2 items)	400
------------	---	--------	--	-----