

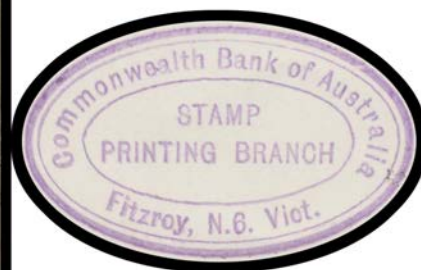
Lot Type Grading Description

Est \$A

1931 CHARLES KINGSFORD SMITH**Lot 313****313** **/C

Exhibit pages etc with 3d publicity photo, *Plate Number* blocks of 4 2d '1' to '8' & 3d '1' to '3' plus *Plate '3'* block of 6 with *Plane Dropping Mailbag*, 6d corner block of 46 (2x3) with *Extra Islands* & two imprint blocks of 8 (2x4) with *Re-Entry*, two registered FDCs with set or 2d & 3d only, and overprinted 'OS' 2d & 3d blocks of 4 with **forged overprints**, generally fine to very fine.

500

**Lot 314****314** E

A+

ORIGINAL ARTWORK: Official photographic reduction to 200% stamp-size of *Frank Manley's* original (**amended**) artwork showing the "Southern Cross" flying to the West, oval 'Commonwealth Bank of Australia/STAMP/PRINTING BRANCH/Fitzroy N6 Vict' [*sic*] cachet in violet on the reverse. Superb! Unlisted in the ACSC. [Arthur's other example sold for \$654]

250

**Lot 315****315** C

A

FIRST DAY COVER: 2d 3d & 6d tied to registered *Ken Baker* cover by untidy Melbourne cds of 18MR31, being the **day before issue**. [The clerk may have deliberately applied the cds poorly because he would have been dressed-down by his superiors if they became aware of the improper servicing of the cover. However, the date on the 2d is very clear]

200

1931 CHARLES KINGSFORD SMITH (continued)

Lot Type Grading Description

Est \$A



Ex Lot 316

316 **V A/A- OVERPRINTED 'OS': 2d & 3d x2 all unmounted, and CTO duo the 3d with *Plane Dropping Mail Bag*. No certificates so offered "as is" and unreserved. (5)

200

1931 SIXPENCE AIRMAIL



Lot 317

317 */** A Two marginal blocks of 4 plus imprint strips of 3 x2 & block of 6 (3x2); then with 'OS' Overprint corner blocks of 6 (2x3) & 10 (2x5) plus imprint strip of 3 (CTO) & block of 6 (3x2), many units are unmounted.

500

318 ** A Complete sheet of 40 (5x8), unmounted, Cat \$1750++.

500

319 ** A/A- OVERPRINTED 'OS': Complete sheet of 40 (5x8), some crimped perforations, unmounted, Cat \$2100++.

500



Ex Lot 320

320 C A/A- - Covers 1) 1931 airmail registered to London with 6d x3 (one without overprint) & numerous instructional handstamps; 2) 1932 airmail to King Island with 6d & KGV 2d; and 3) 1930s parcel label with 6d & Roos 2/- maroon (Third Wmk ?). Scarce trio. (3)

300